

WHEN ASSEMBLING **EXPO MultiQuad**

REMEMBER YOUR **ABC**'s...

ASSEMBLE EACH COMPONENT SEPARATELY

BUILD THE DESIRED LAYOUT

COVER YOUR MULTIQUAD LAYOUT WITH QUADS



EXPO MultiQuad[®]
An **ExpoDisplays** Product

10 x 20 Custom MultiQuad[®]

EXPO

Expo EXPO Displays[®]
A Division of Diamond Displays International

3401 Mary Taylor Road
Birmingham, Alabama 35235
(205) 439-8200

Project Title

10x20 MULTIQUAD[®]

Sheet Title

ASSEMBLY
INSTRUCTIONS
COVER SHEET

Page 1

ELECTRICAL PLAN



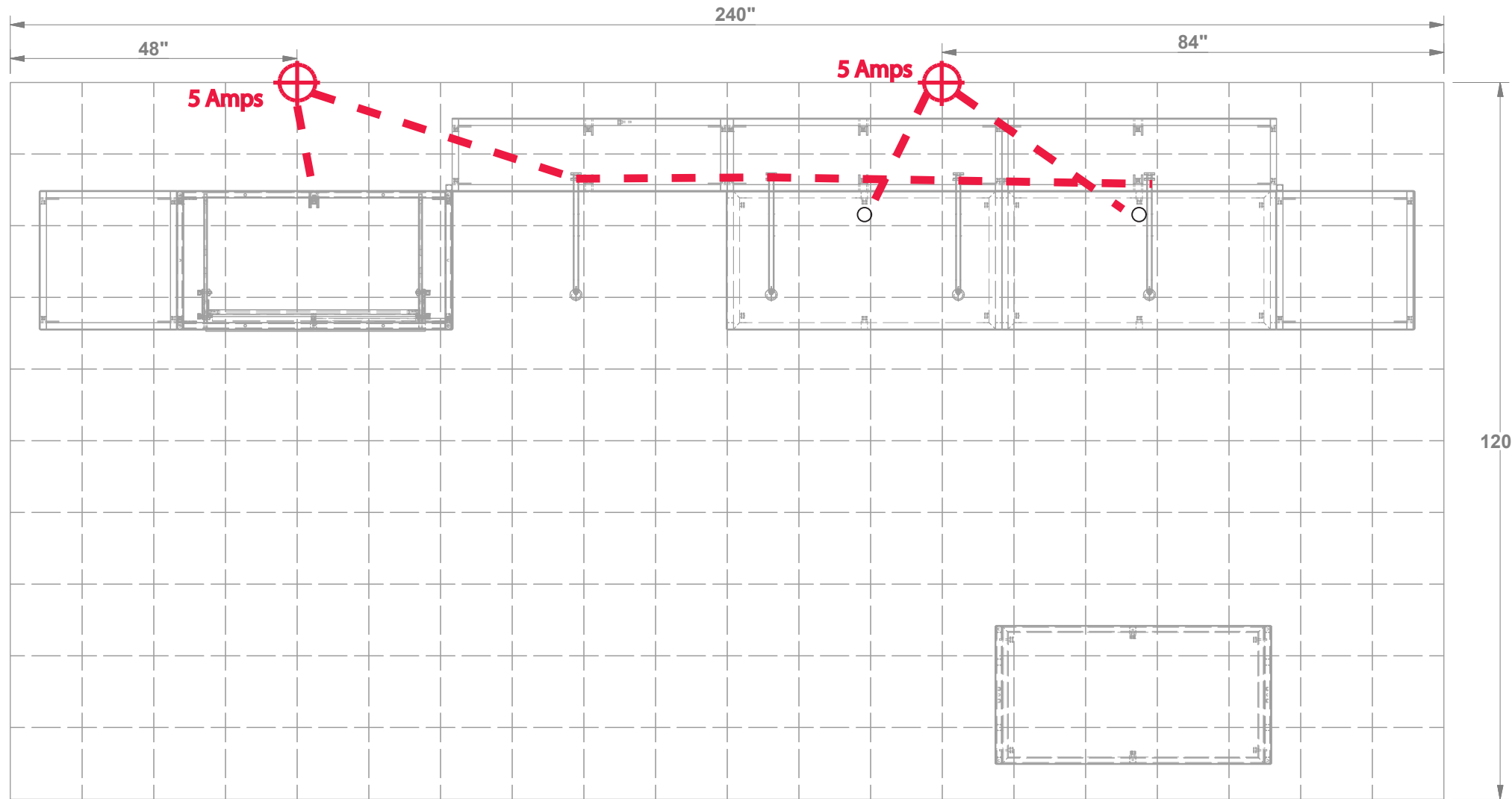
Project Title

10x20 MULTIQAD®

Sheet Title

ASSEMBLY INSTRUCTIONS
ELECTRICAL PLAN

BOOTH # _____





TOP VIEW

BOOTH # _____

FRONT OF DISPLAY

1 Square = 1'- 0"

-  MAIN ELECTRICAL DROP
-  ELECTRICAL OUTLET

SHOW: _____

BOOTH: _____

BOOTH # _____

BOOTH # _____

ASSEMBLE ALL FRAMES LISTED USING APPENDIX PAGES



Expo EX PO Displays
A Division of Diamond Displays International

3401 Mary Taylor Road
Birmingham, Alabama 35235
(205) 439-8200

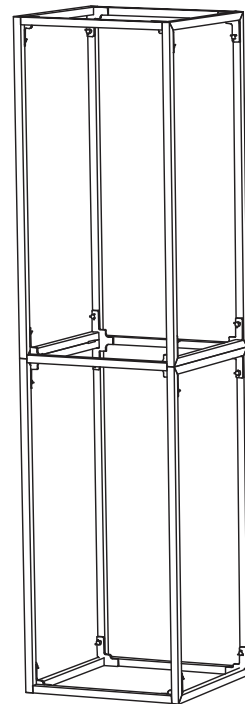
Project Title

10x20 MULTIQUAD®

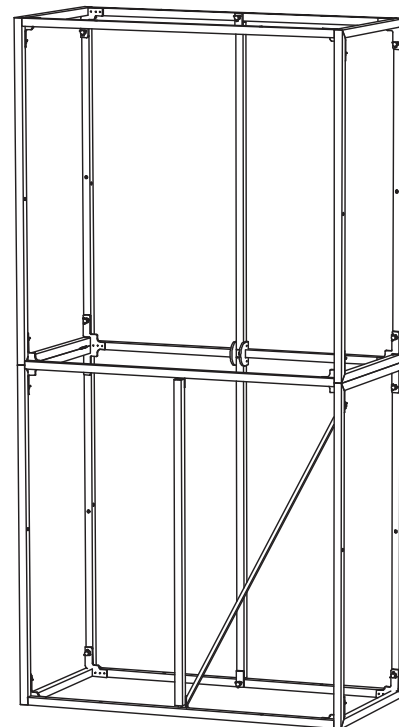
Sheet Title

ASSEMBLY INSTRUCTIONS
STANDARD PARTS

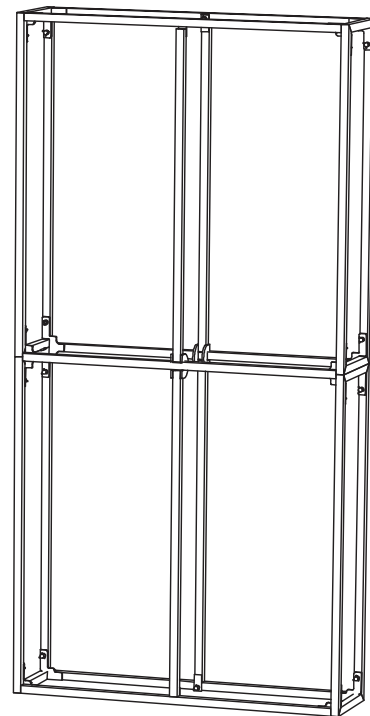
MAX FRAME
(SEE APPENDIX N)



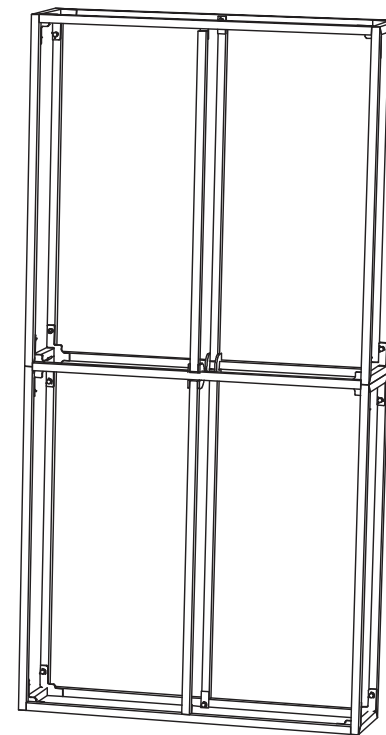
MAX FRAME
(SEE APPENDIX J-6)



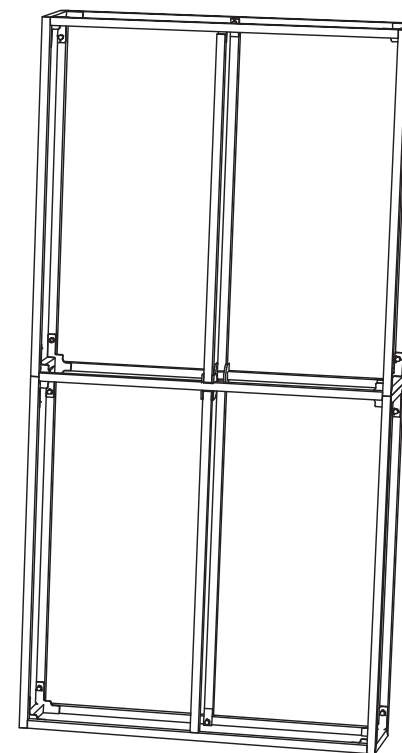
STANDARD FRAME
(SEE APPENDIX B)



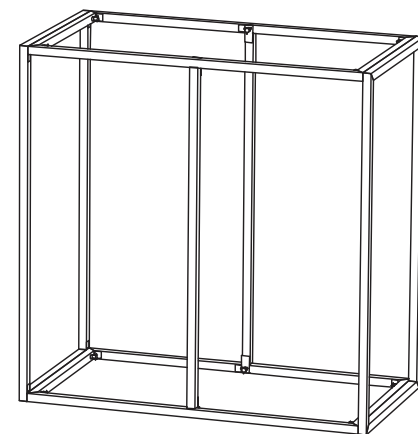
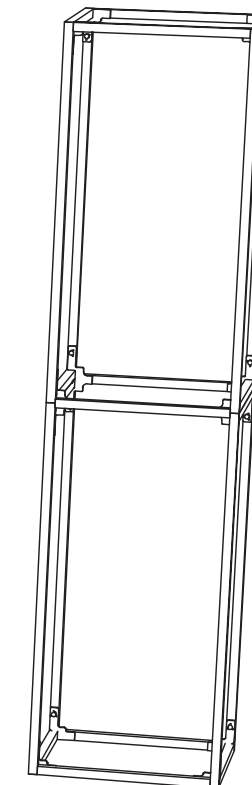
STANDARD FRAME
(SEE APPENDIX B)



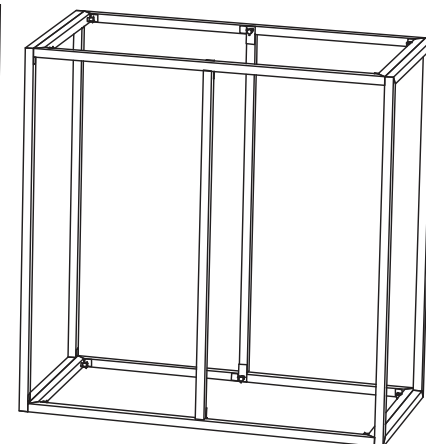
STANDARD FRAME
(SEE APPENDIX B)



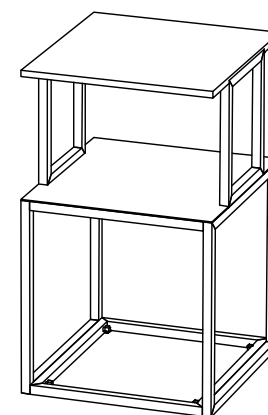
MAX FRAME
(SEE APPENDIX N)



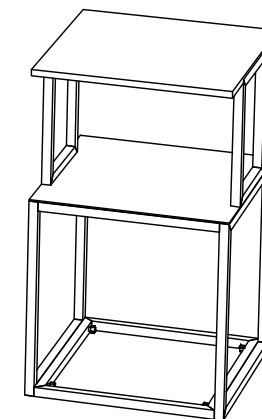
MAX FRAME
(SEE APPENDIX L)



MAX FRAME
(SEE APPENDIX L)



MAX PODIUM
(SEE APPENDIX W)



MAX PODIUM
(SEE APPENDIX W)

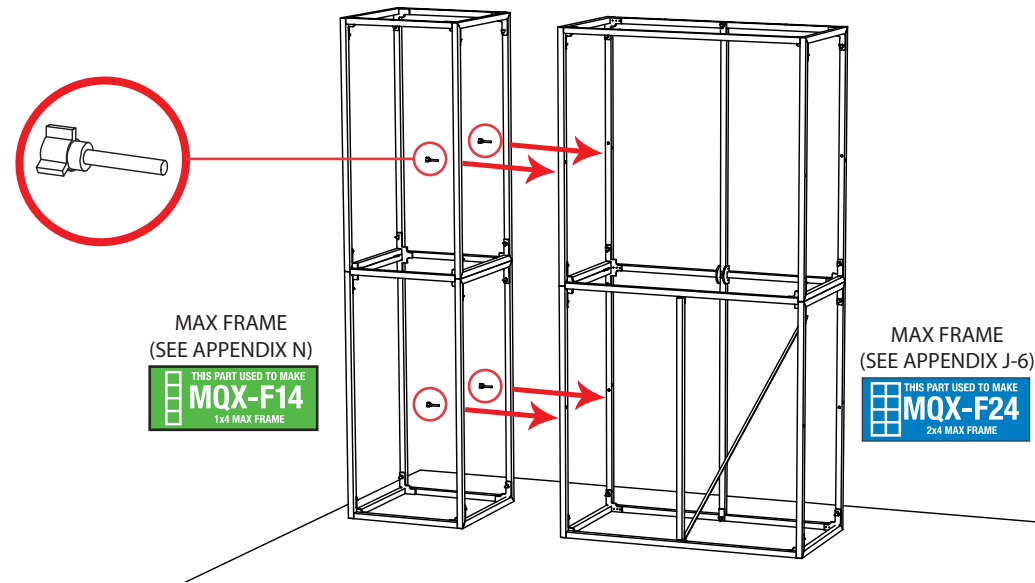
JOIN



&



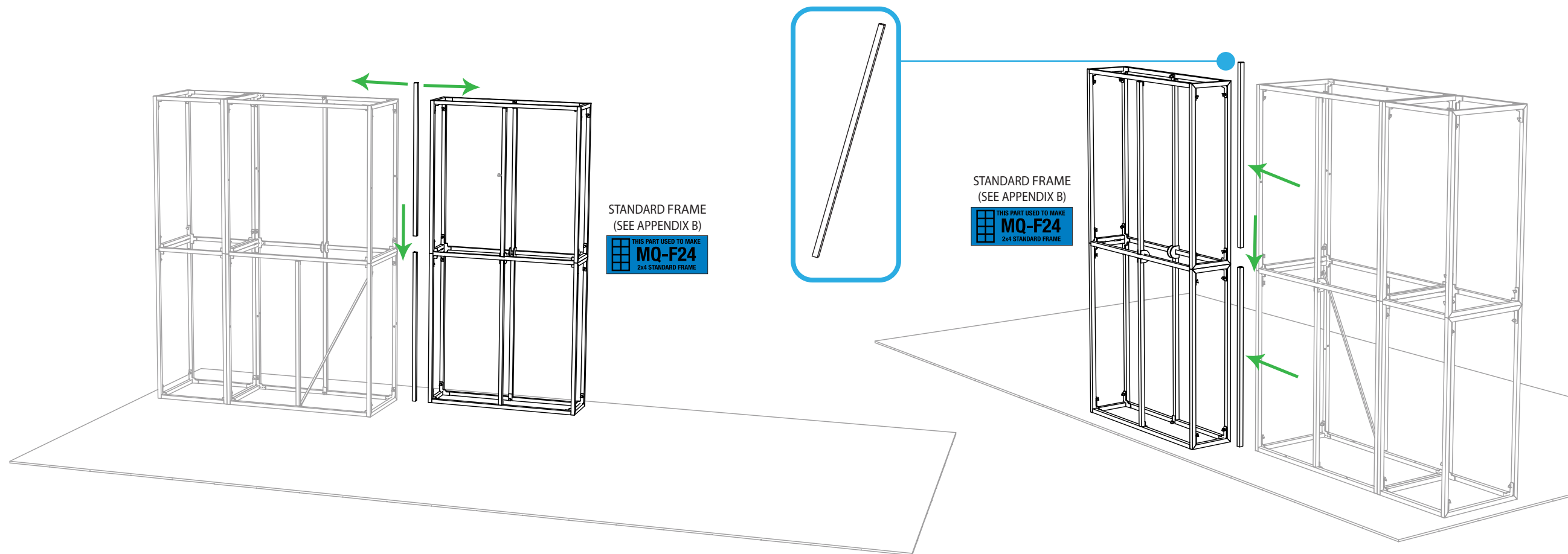
WITH **RED THUMBSCREWS** IN DIRECTION SHOWN



JOIN



TO LEFT TV TOWER WITH **46" MAGNETIC CONNECTOR** IN DIRECTION SHOWN



Expo Displays

3401 Mary Taylor Road
Birmingham, Alabama 35235
(205) 439-8200

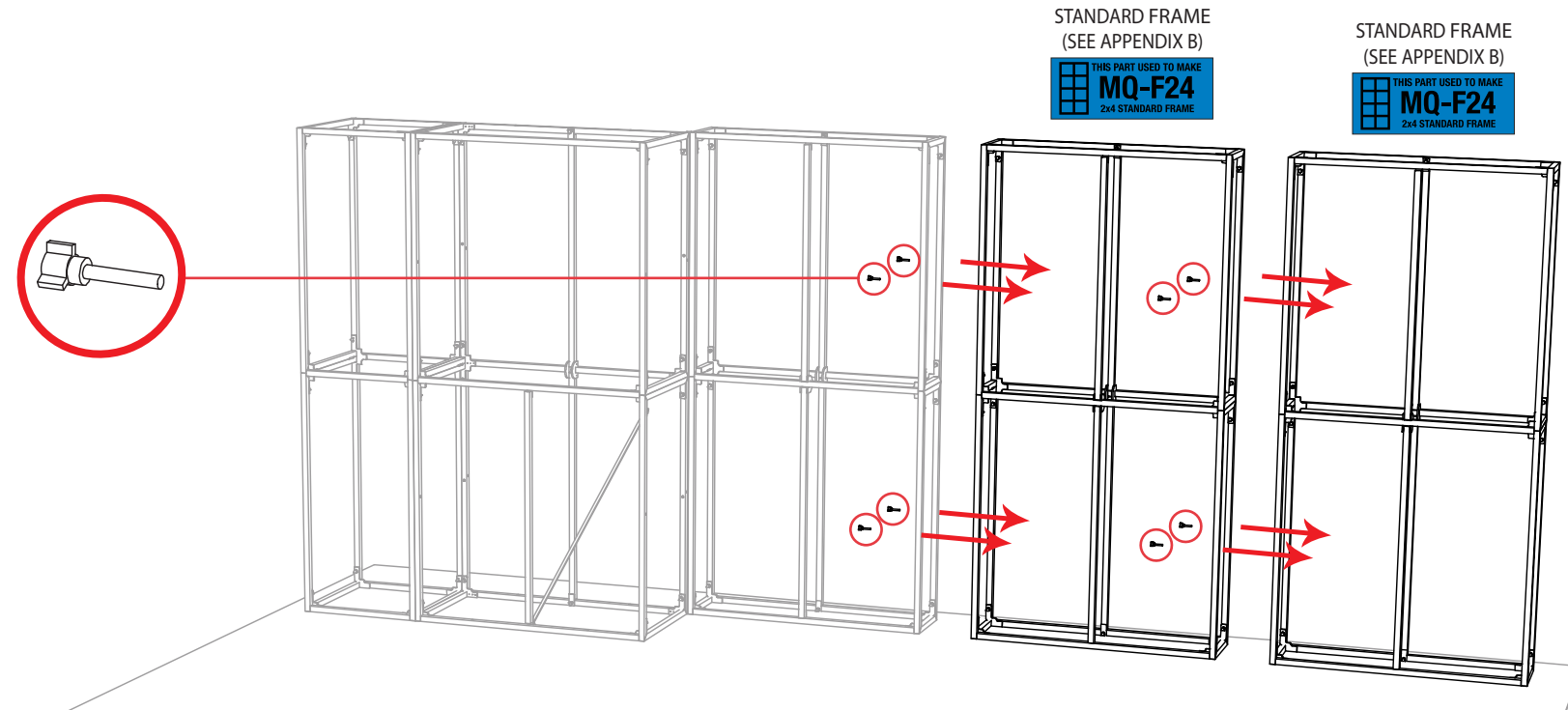
Project Title

10x20 MULTIQAD®

Sheet Title

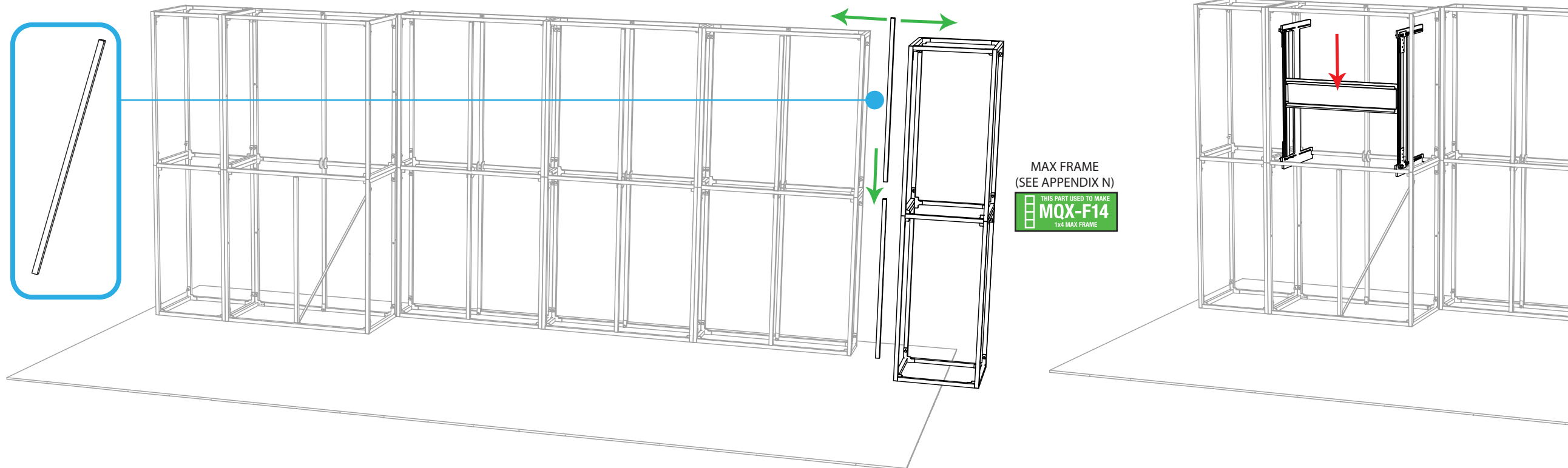
ASSEMBLY INSTRUCTIONS
MAIN WALL LEFT SIDE ASSEMBLY

JOIN (2)  WITH (8) RED THUMBSCREWS IN DIRECTION SHOWN



JOIN  TO RIGHT END WITH **46" MAGNETIC CONNECTOR** IN DIRECTION SHOWN

SEE **APPENDIX J-7** FOR **MEDIA MOUNT DETAILS**



Expo EX PO Displays
A Division of Diamond Displays International

3401 Mary Taylor Road
Birmingham, Alabama 35235
(205) 439-8200

Job #: 72589

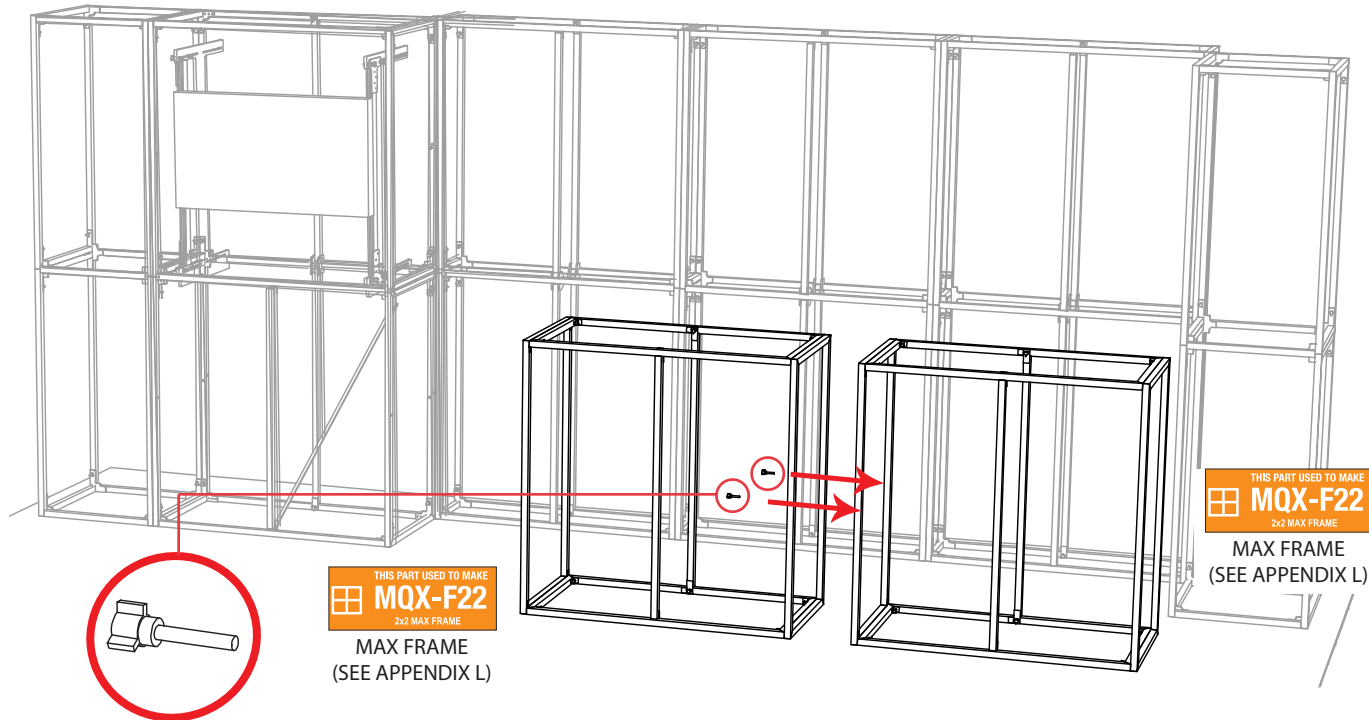
Project Title

10x20 MULTIQAD®

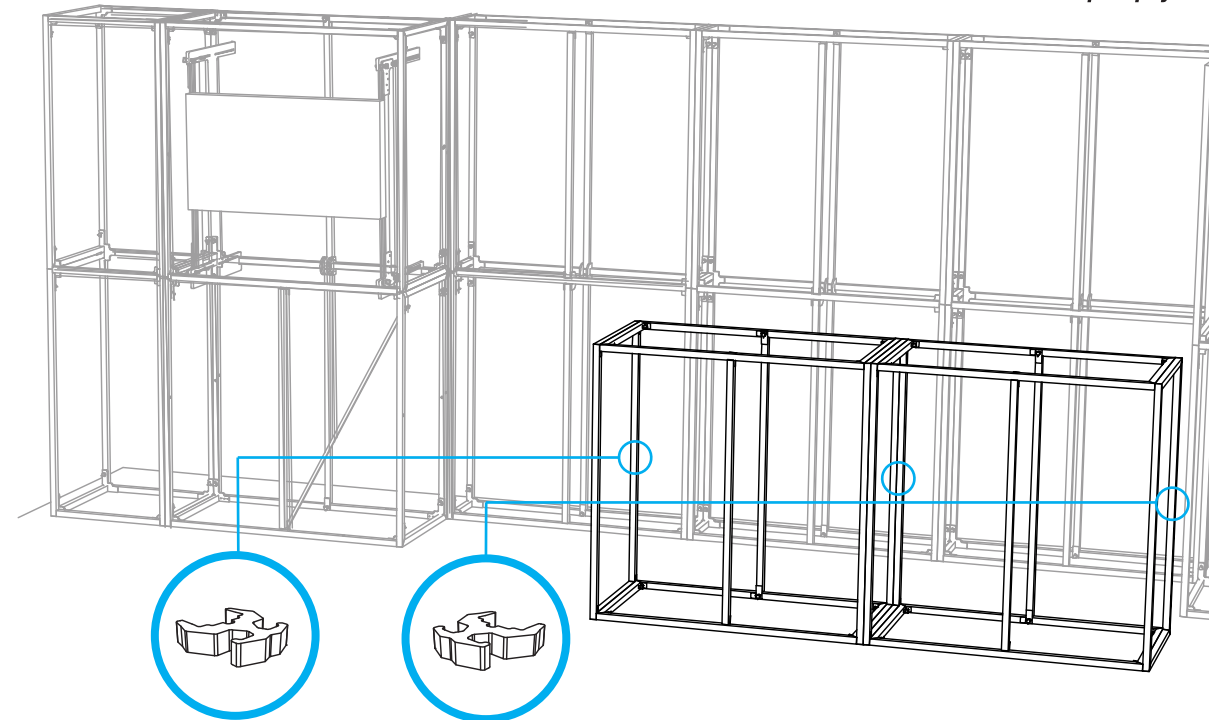
Sheet Title

ASSEMBLY INSTRUCTIONS
MAIN WALL RIGHT SIDE ASSEMBLY

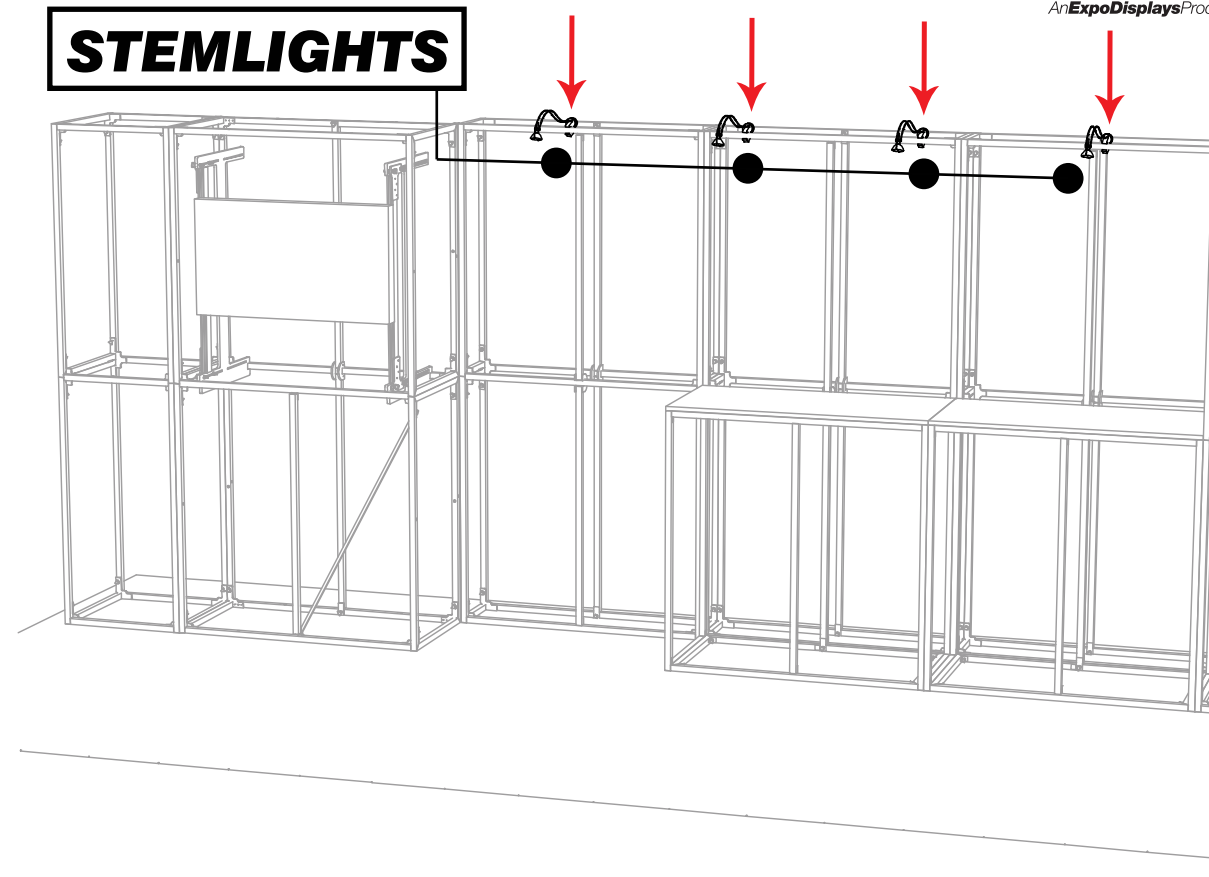
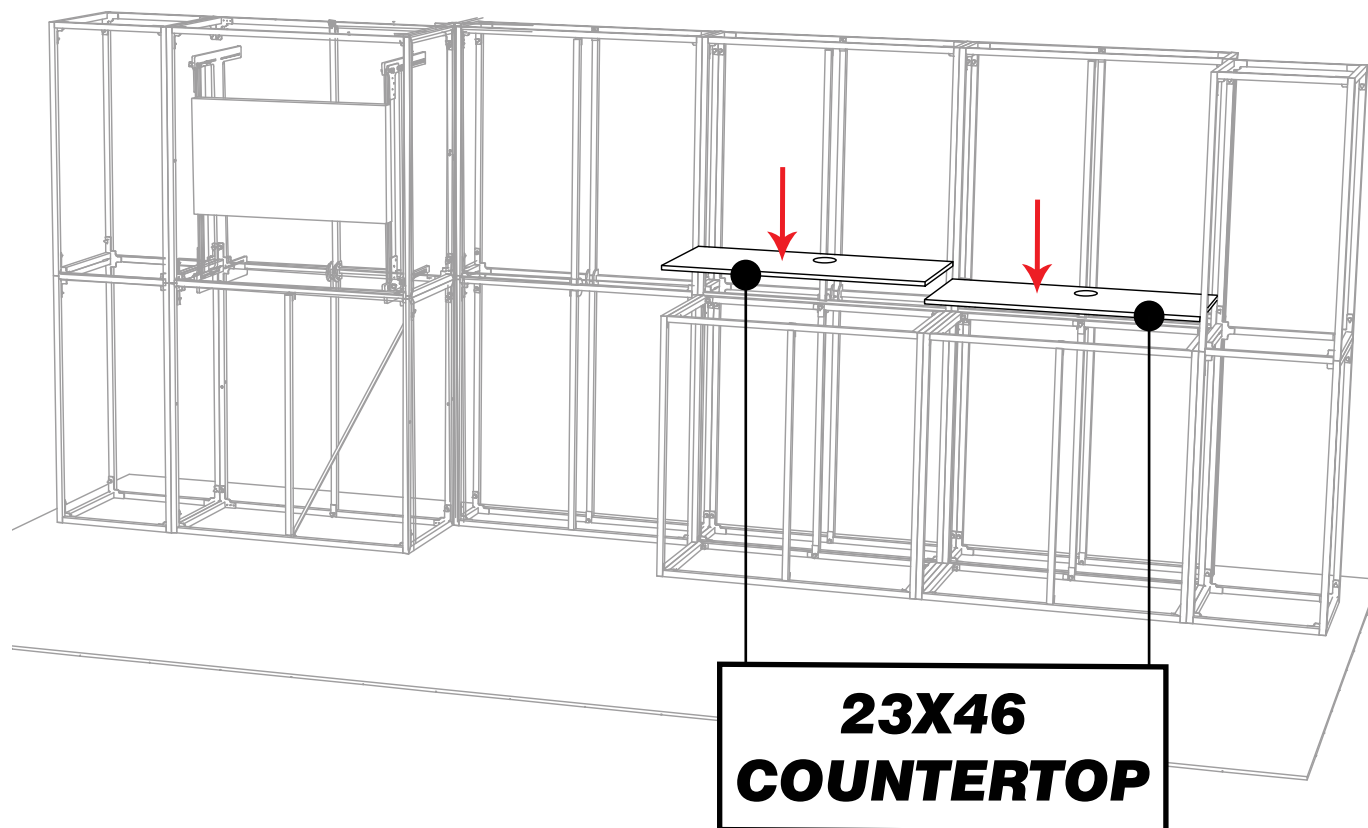
JOIN (2)  WITH (4) **RED THUMBSCREWS** IN DIRECTION SHOWN
 THEN JOIN TO **MAIN WALL** WITH **PRESSURE CLAMPS** AS SHOWN



PLACE **23X46 COUNTERTOP** ON
 TOP OF FRAMES AS SHOWN



SEE **APPENDIX P-2** FOR
STEMLIGHT DETAILS



Expo EX PO Displays
A Division of Diamond Displays International

3401 Mary Taylor Road
 Birmingham, Alabama 35235
 (205) 439-8200

Project Title

10x20 MULTIQUAD®

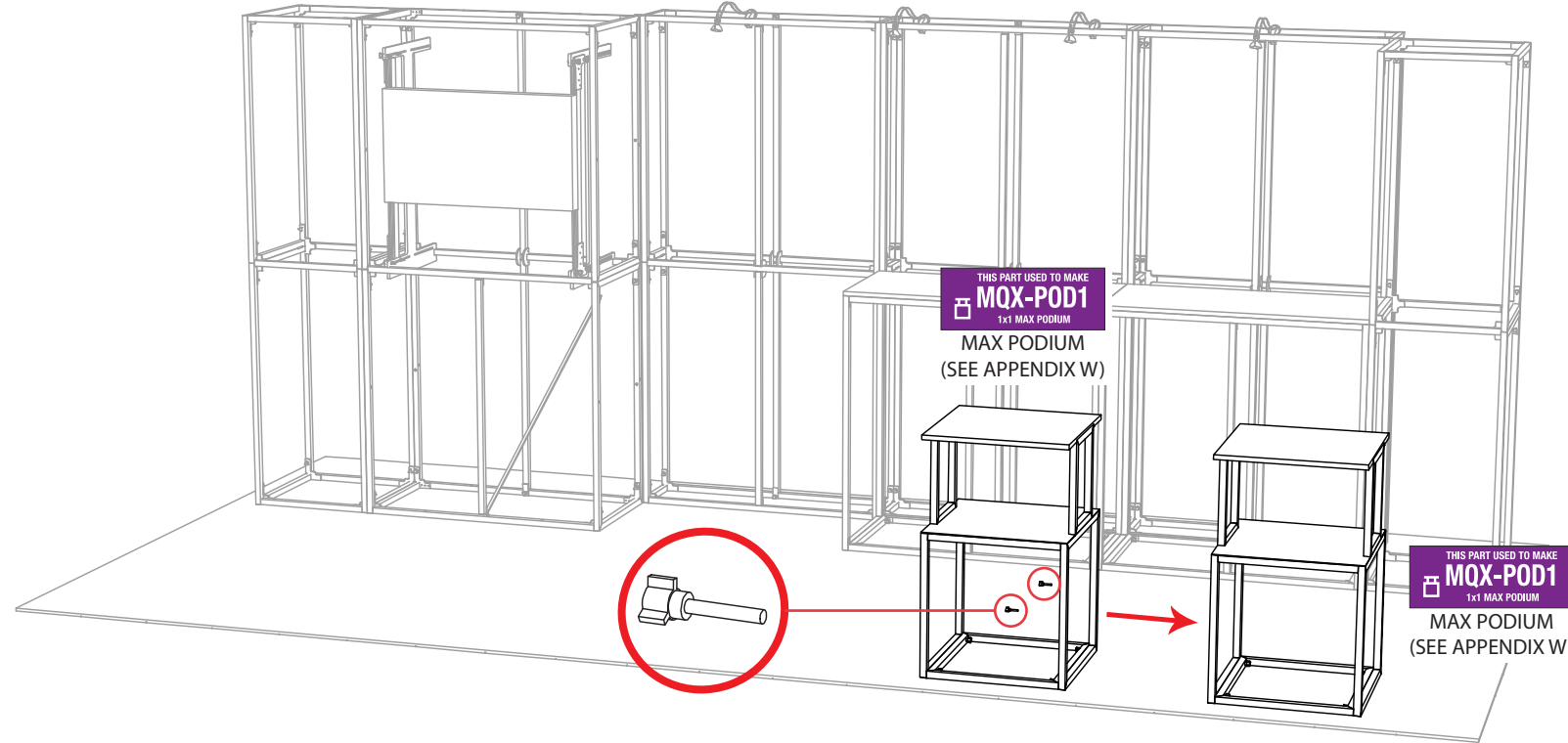
Sheet Title

**ASSEMBLY
 INSTRUCTIONS**
**WALL COUNTER
 & STEMLIGHTS**

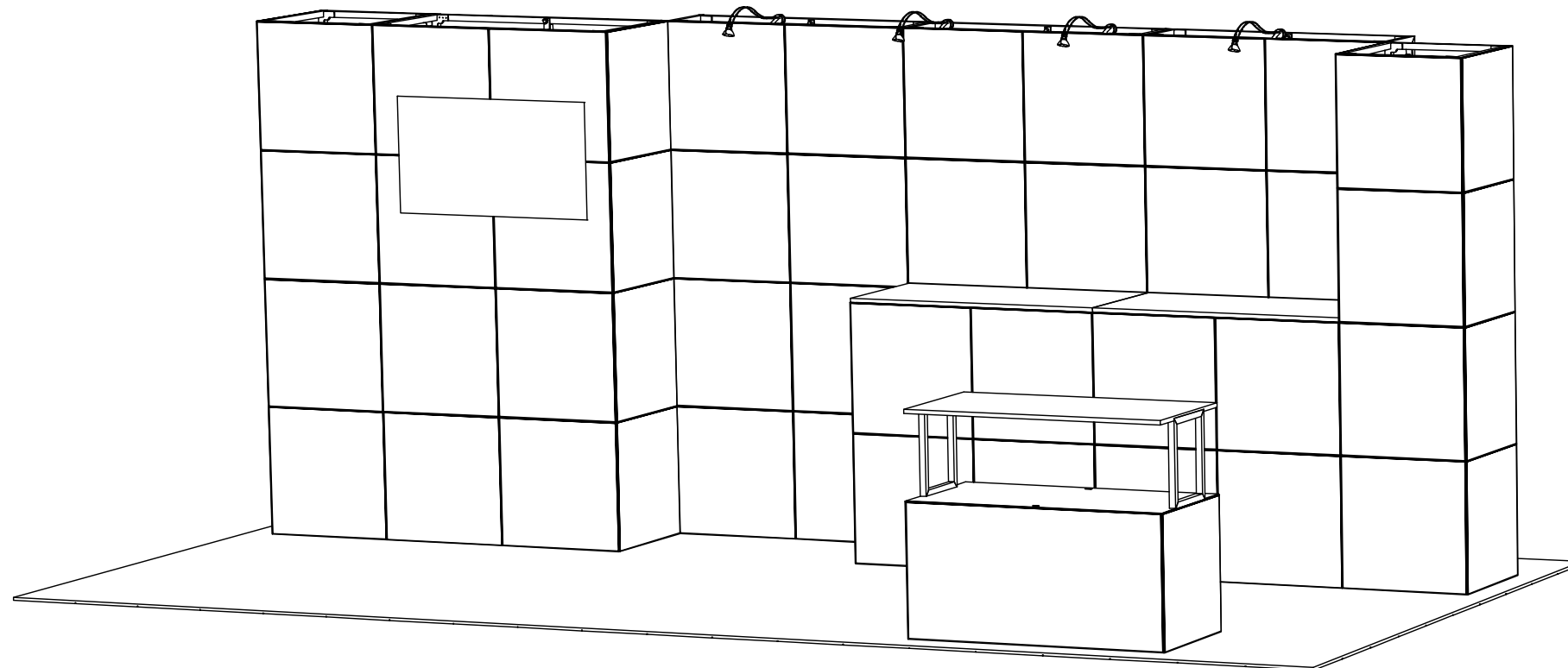
JOIN (2)



WITH (2) **RED THUMBSCREWS** IN FRONT OF **MAIN WALL** ON RIGHT SIDE OF FLOORSPACE AS SHOWN



SEE **GRAPHIC LAYOUT** ON NEXT PAGE TO ADD QUADS TO FRAMEWORK



Expo EX PO Displays
A Division of Diamond Displays International

3401 Mary Taylor Road
Birmingham, Alabama 35235
(205) 439-8200

Project Title

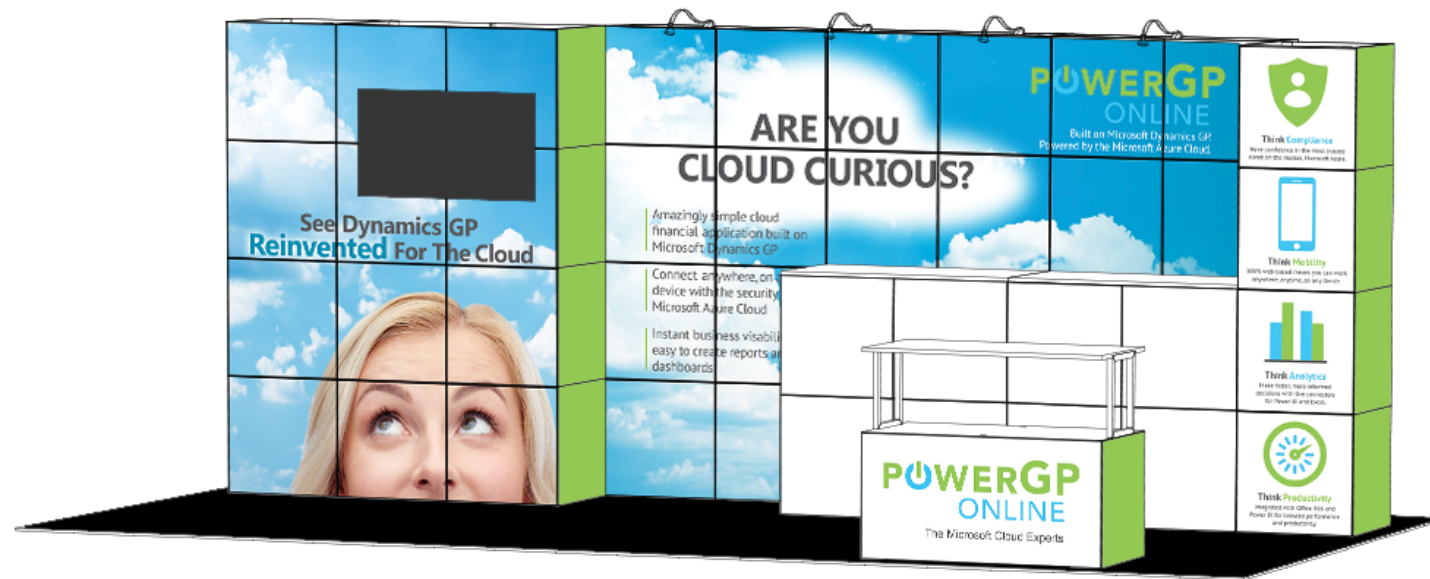
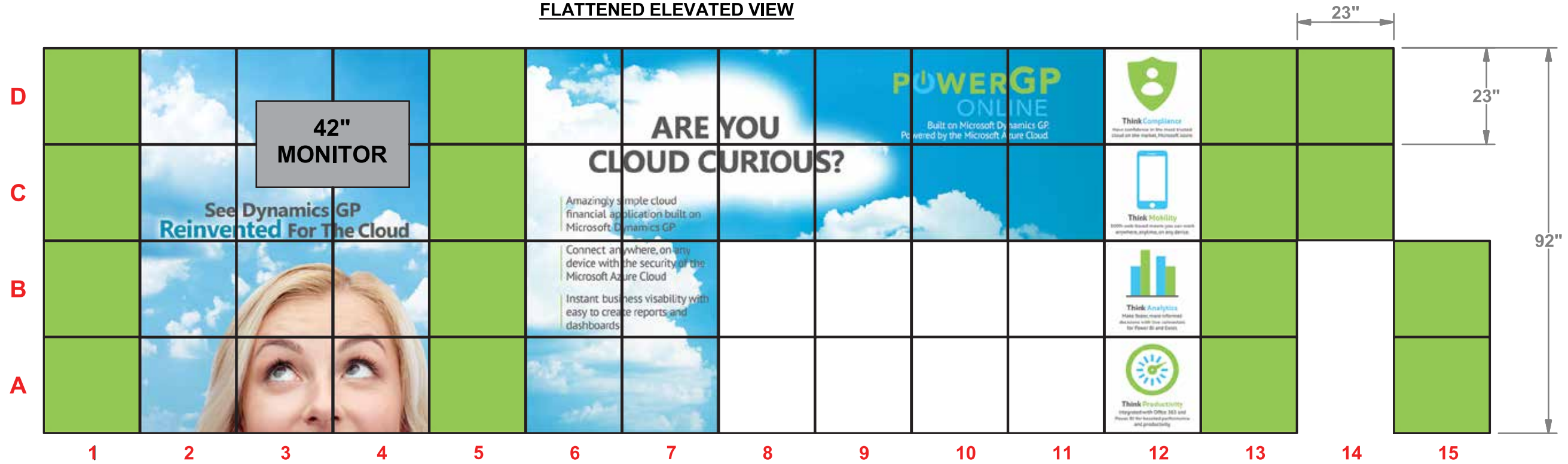
10x20 MULTIQUAD®

Sheet Title

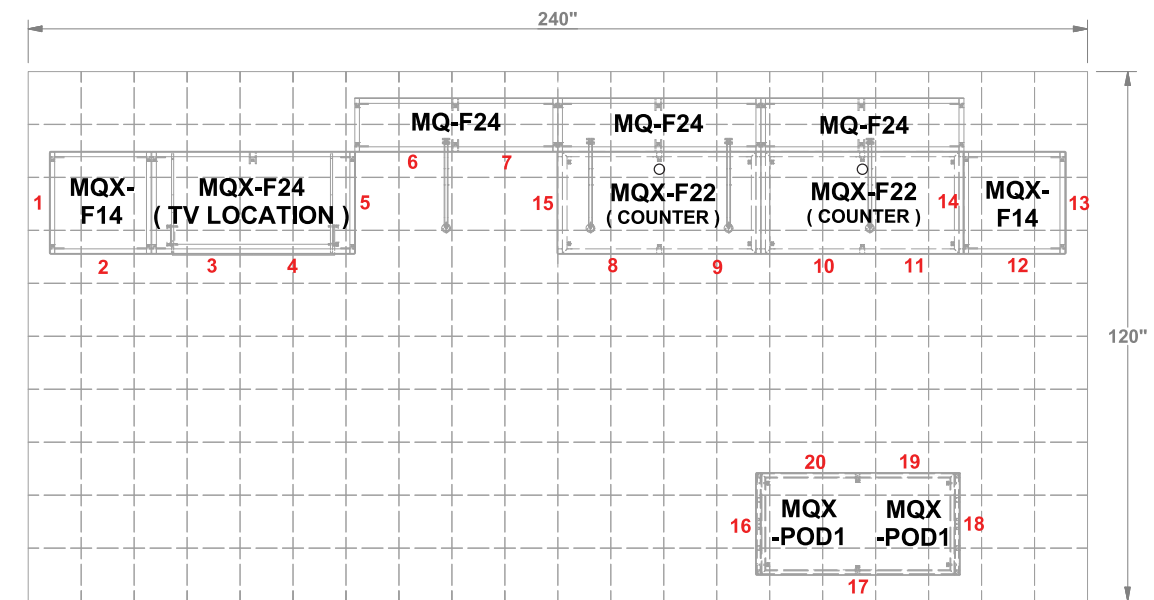
**ASSEMBLY
INSTRUCTIONS
FRONT COUNTER
DESIRED LAYOUT**

GRAPHIC LAYOUT

FLATTENED ELEVATED VIEW



PERSPECTIVE VIEW



TOP VIEW



Expo EXPO Displays
A Division of Diamond Displays International

3401 Mary Taylor Road
Birmingham, Alabama 35235
(205) 439-8200

Project Title

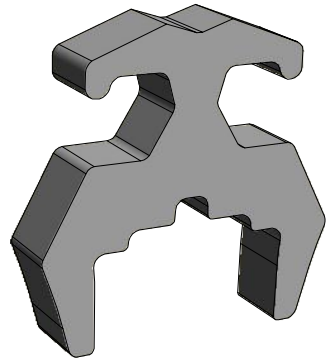
10x20 MULTIQUAD®

Sheet Title

ASSEMBLY INSTRUCTIONS
GRAPHIC LAYOUT

**FRAME CLAMP INSTRUCTION
MQ-CLMP**

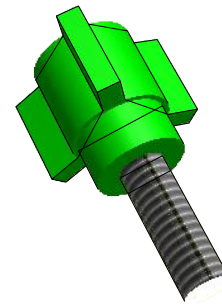
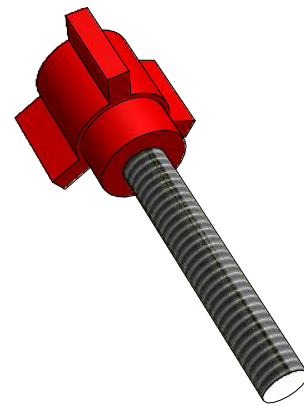
(NOT REQUIRED IN EVERY CONFIGURATION)



THE MQ-CLMP IS A FRICTION-FIT CONNECTOR / ALIGNMENT TOOL THAT DOES NOT REQUIRE TOOLS. THEY ARE TO BE USED IN ABNORMAL MULTIQUAD FRAME CONFIGURATIONS OR AS ADDITIONAL FRAME SECURITY IN SPECIAL SITUATIONS



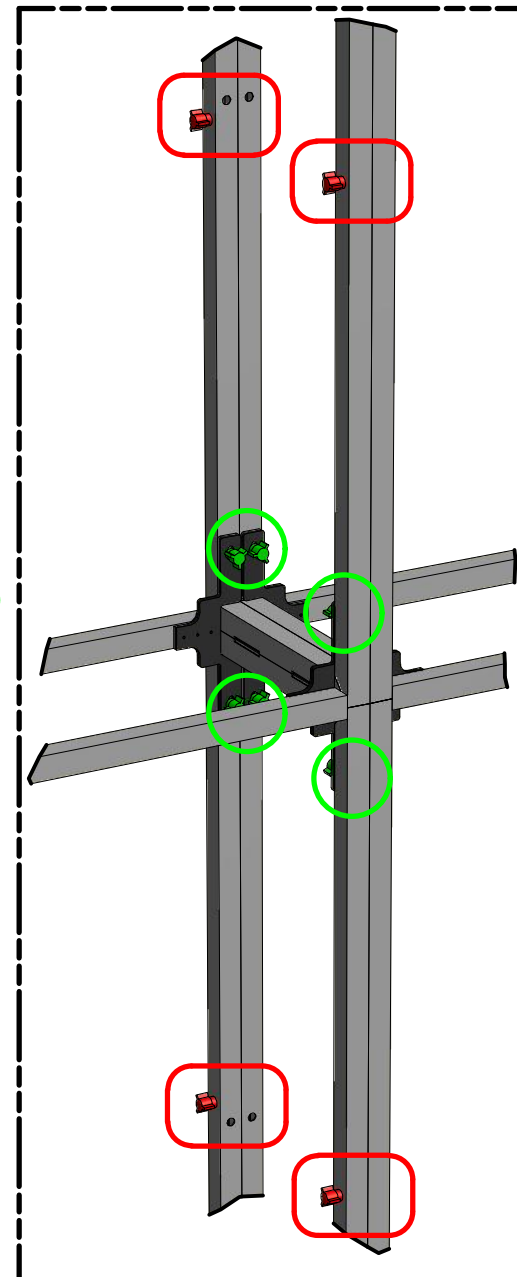
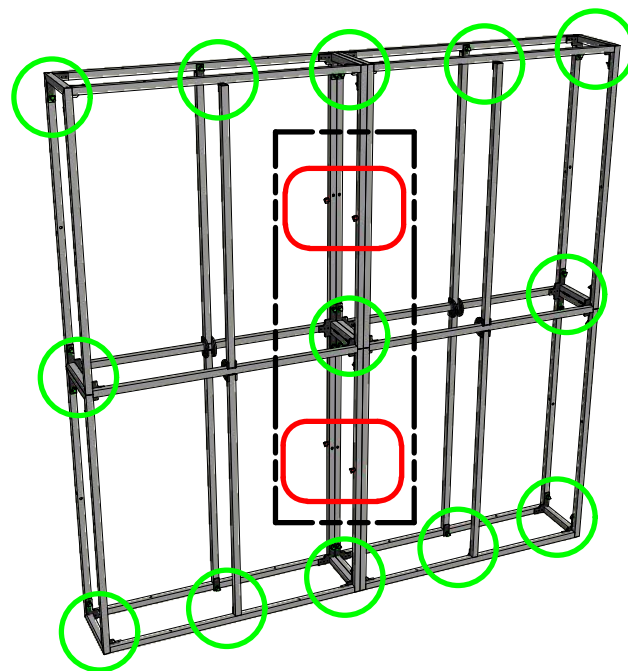
**THUMB SCREW INSTRUCTION
MQ-TSR2 / MQ-TSG1**



THE 2" RED THUMB SCREW IS USED TO CONNECT MULTIQUAD FRAMES TO OTHER MULTIQUAD FRAMES. EACH FRAME HAS RIVET NUT ON ONE SIDE AND A HOLE ON THE OTHER TO ALLOW FRAME TO FRAME CONNECTION

THE 1" GREEN THUMB SCREWS ARE USED WHEN ASSEMBLING 1x4 AND 2x4 FRAMES. SEE APPENDIX PAGES

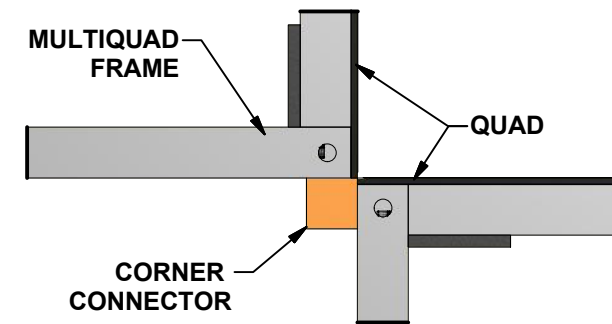
DUE TO THE RIVET NUTS, ALL FRAMES HAVE A LEFT AND RIGHT SIDE. VERIFY FRAME ORIENTATION TO ALLOW FRAME TO FRAME CONNECTION



**CORNER CONNECTOR INSTRUCTION
MQ-BTW**

(NOT REQUIRED IN EVERY CONFIGURATION)

THE MQ-BTW CORNER ALIGNMENT TOOL IS DESIGNED TO AID IN THE ALIGNMENT OF FRAMES AS NEEDED IN SOME MULTIQUAD CONFIGURATIONS.



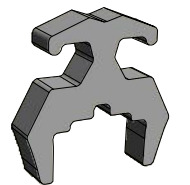
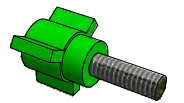
AFTER TWO MULTIQUAD FRAMES ARE SET "CORNER-TO-CORNER" THE MQ-BTW SIMPLY ATTACHES TO THE EXISTING MAGNETS ON THE FRAME



Expo Displays

3401 Mary Taylor Road
Birmingham, Alabama 35235
(205) 439-8200

Drawn By: AKHIII



**ASSEMBLY
INSTRUCTIONS**

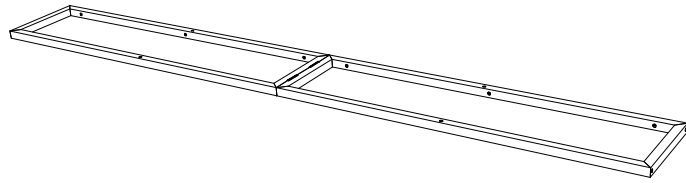
CONNECTORS & ALIGNMENT TOOLS

APPENDIX A

PARTS LIST		
QNTY	LABEL	NAME
1	LVH1	LEFT VERTICAL HINGED
1	RVH1	RIGHT VERTICAL HINGED
2	BH1	BOTTOM HORIZONTAL
2	MH1	MIDDLE HORIZONTAL
2	TH1	TOP HORIZONTAL
2	CVH1	CENTER VERTICAL HINGED
2	GRN	1" GREEN THUMB SCREW
4	RED	2" RED THUMB SCREW

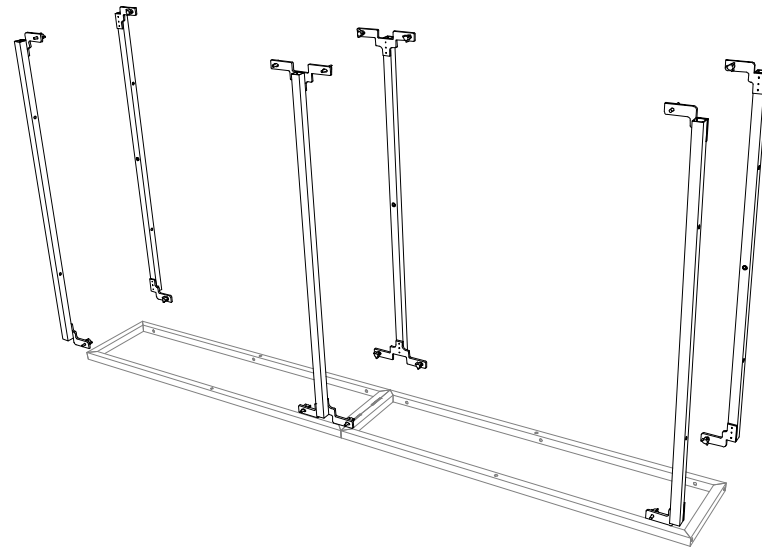
1st Step

START WITH THE LEFT VERTICAL HINGED (LVH1) ON THE GROUND



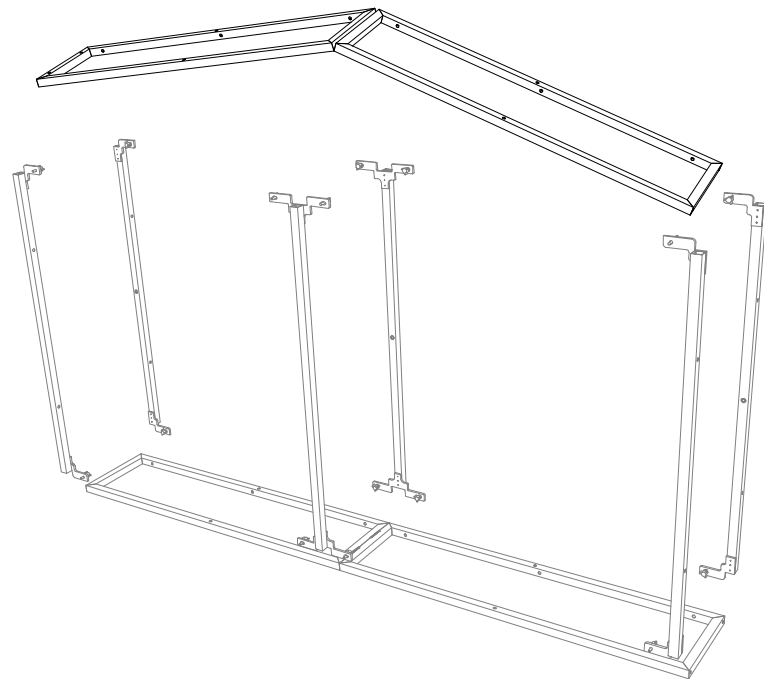
2nd Step

ATTACH THE (2) TOP HORIZONTAL (TH1), THE (2) MIDDLE HORIZONTAL (MH1), AND THE (2) BOTTOM HORIZONTAL (BH1)



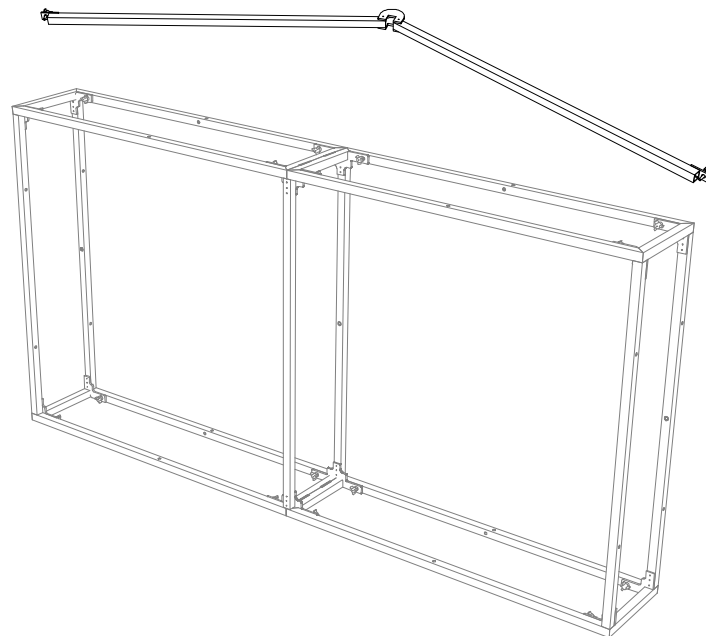
3rd Step

ATTACH THE RIGHT HINGED SIDE (RVH1)

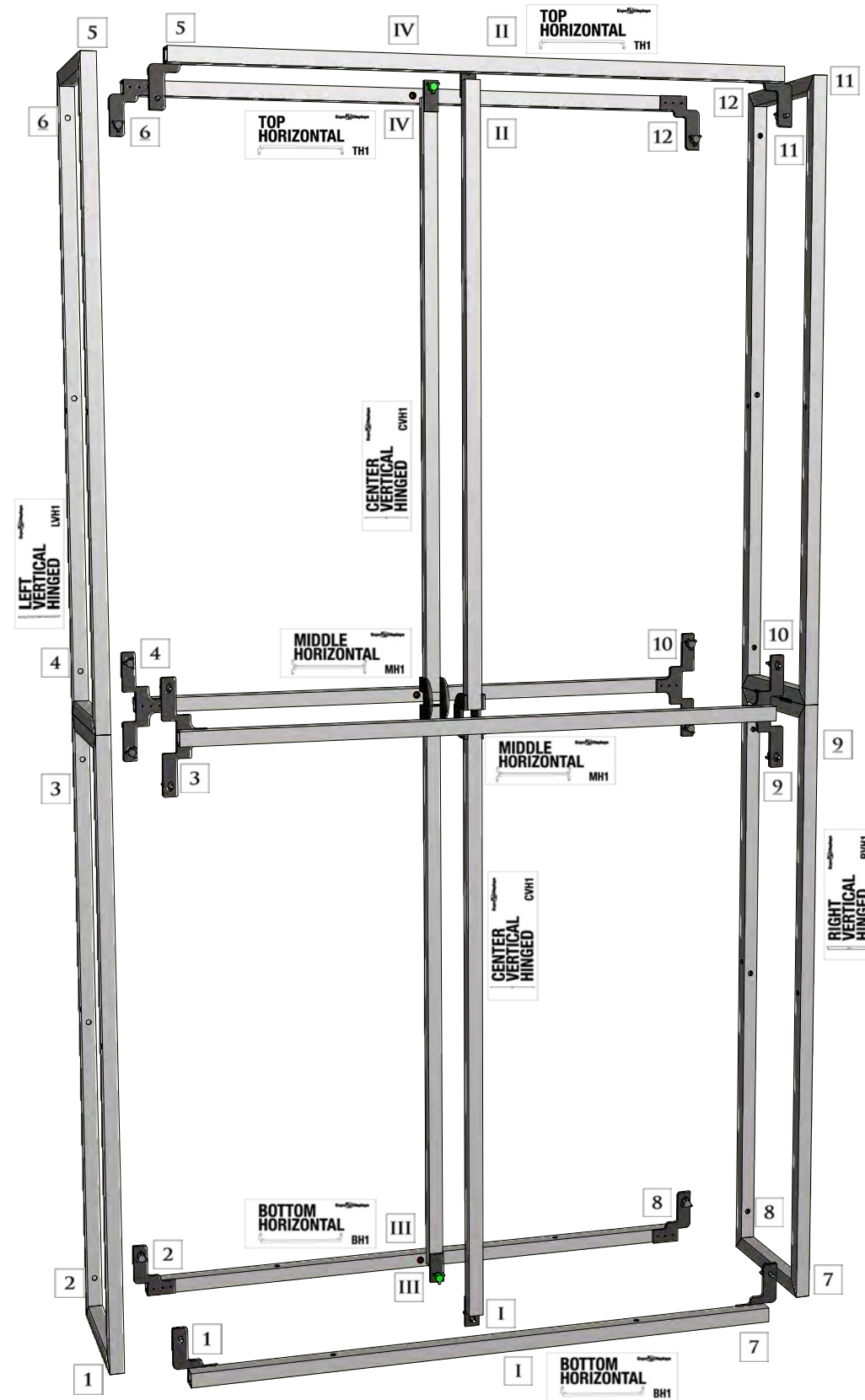


4th Step

ATTACH THE (2) CENTER VERTICAL HINGED (CVH1) AND STAND UP-RIGHT



MATCH NUMBERS TO CONSTRUCT



Expo Displays

3401 Mary Taylor Road
Birmingham, Alabama 35235
(205) 439-8200

Drawn By: AKHIII

THIS PART USED TO MAKE
MQ-F24
2x4 STANDARD FRAME

ASSEMBLY
INSTRUCTIONS
2x4 STANDARD FRAME
MQ-F24

APPENDIX B

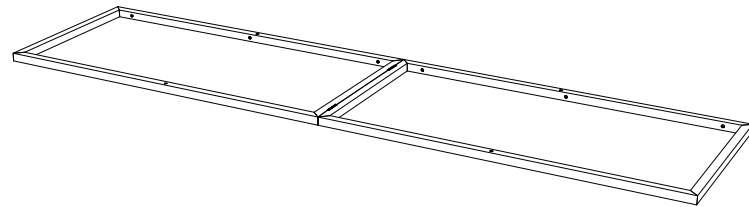
PARTS LIST		
QNTY	LABEL	NAME
1	LVHX	LEFT VERTICAL HINGED MAX
1	RVHX	RIGHT VERTICAL HINGED MAX
2	BH1	BOTTOM HORIZONTAL BAR
2	TH1	TOP HORIZONTAL BAR
2	MH1	MIDDLE HORIZONTAL BAR
1	CVH1	CENTER VERTICAL HINGED BAR
1	CVH2	CENTER VERTICAL HALF
20	GRN	1" GREEN THUMB SCREW
1	MQX-MM1	MAX MEDIA MOUNT
1	DIAGONAL	DIAGONAL CROSS BEAM

NOTE:

REFER TO APPENDIX J FOR BASIC MQX-F24 FRAME ASSEMBLY AND APPENDIX J7 FOR MAX MEDIA MOUNT ASSEMBLY

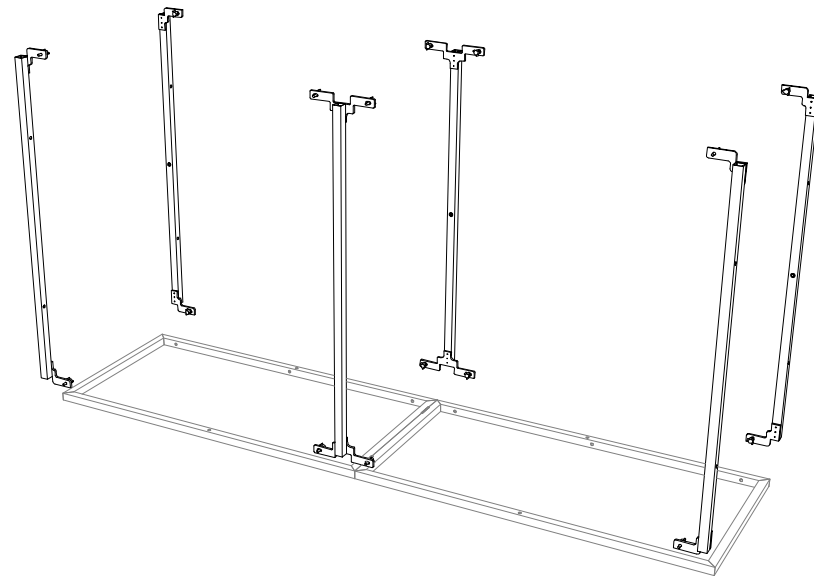
1st Step)

START WITH THE LEFT VERTICAL (LVHX) ON THE GROUND



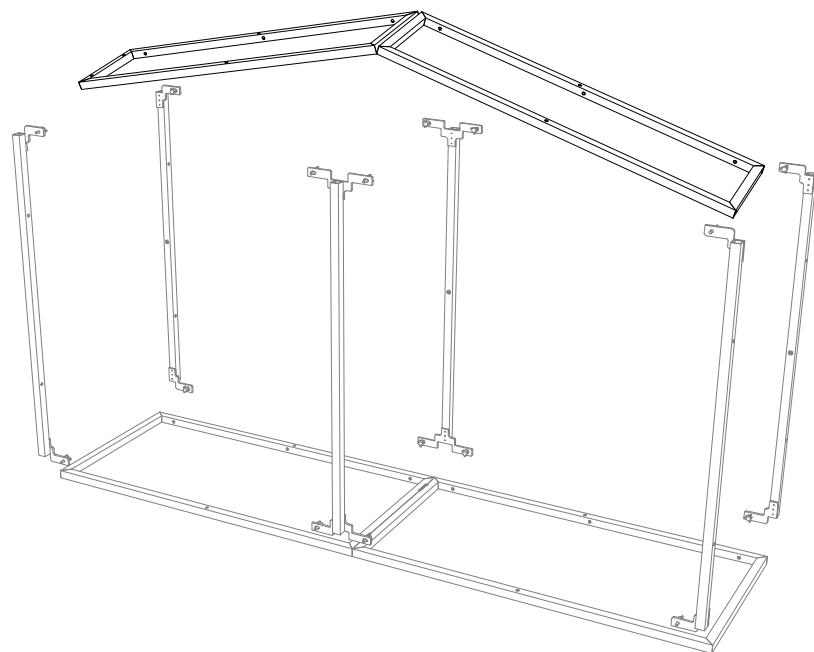
2nd Step)

ATTACH THE (2) TOP HORIZONTAL (TH1), THE (2) MIDDLE HORIZONTAL (MH1), AND THE (2) BOTTOM HORIZONTAL (BH1)



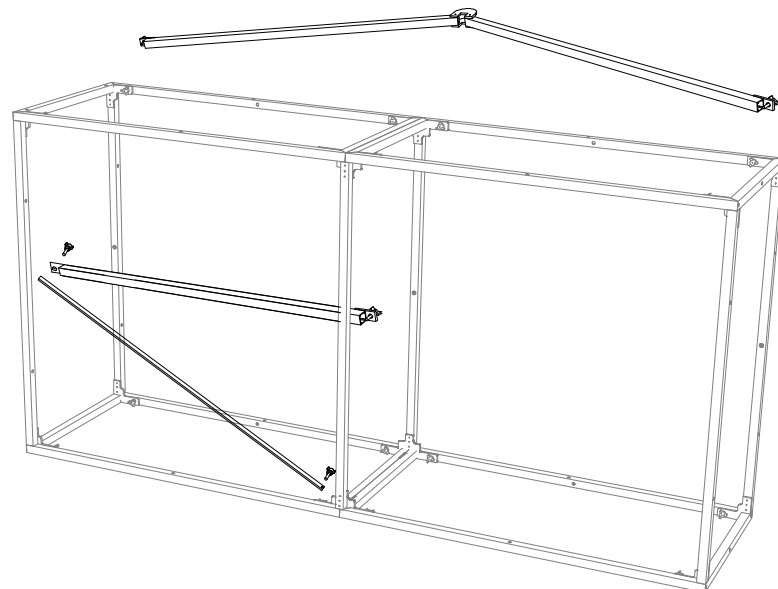
3rd Step)

ATTACH THE RIGHT HINGED SIDE (RVH1)

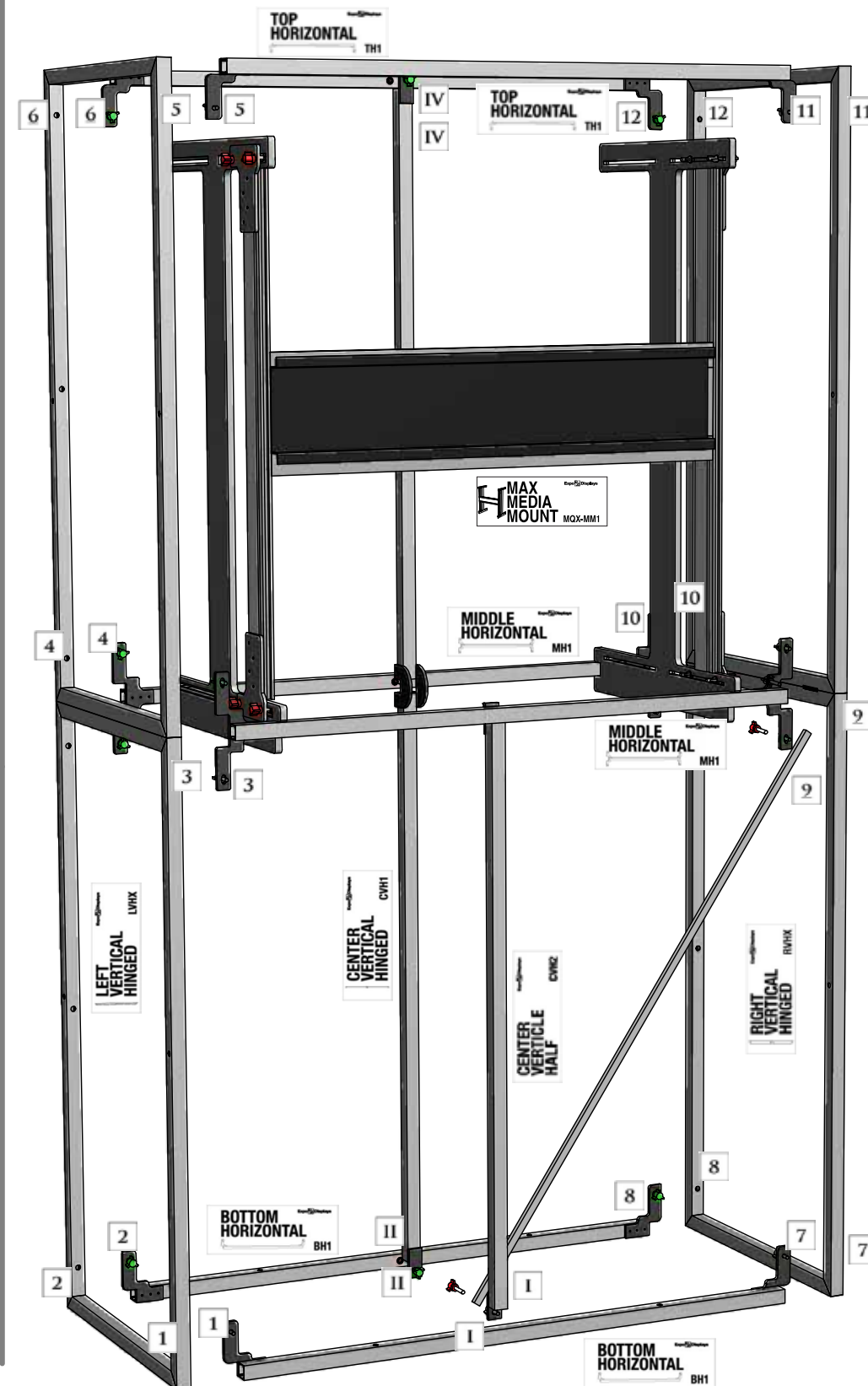


4th Step)

ATTACH THE (1) CENTER VERTICAL HINGED (CVH1) TO BACK OF FRAME, AND (1) CENTER VERTICAL (CVH2) AND (1) 48.5" DIAGONAL CROSS BEAM TO BOTTOM-FRONT OF FRAME, AND STAND UPRIGHT



*MATCH NUMBERS TO CONSTRUCT



Expo Displays

3401 Mary Taylor Road
Birmingham, Alabama 35235
(205) 439-8200

Drawn By: JW



ASSEMBLY INSTRUCTIONS

MQX-F24 WITH MAX MEDIA MOUNT

APPENDIX J6

PARTS LIST:

#	LABEL	NAME
1	MQ-LM4QD	MAX MEDIA MOUNT

1st Step)

THIS SET OF ASSEMBLY INSTRUCTIONS FOCUSES ON THE SINGLE - SIDED MOUNT (MQ-LM4QD). THE SAME PROCEDURES APPLY WHEN SETTING UP THE DOUBLE SIDED (MQ-LM4Q) AND THE DOUBLE SIDED CONVERSION KIT (MQ-LM4QC)



MQ-LM4Q
SINGLE SIDED
MEDIA MOUNT



MQ-LM4QC
DOUBLE SIDED
CONVERSION
KIT



2nd Step)

AN M10 HEX KEY WILL BE INCLUDED WITH THE MOUNT THAT WILL BE USED TO FASTEN THE EXTRUSIONS TOGETHER.



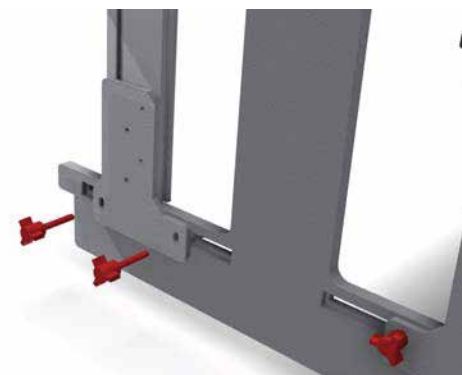
M10 HEX KEY

THE CIRCLES REPRESENT THE EXTRUSION LOCKS.

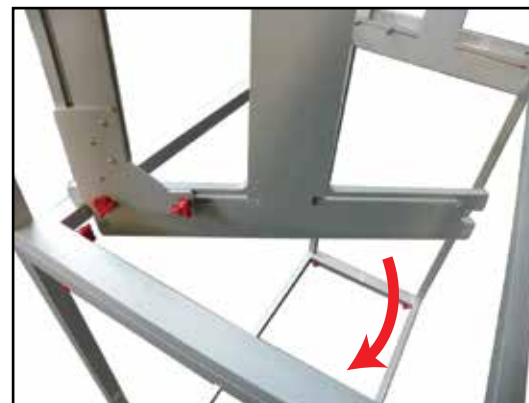
TIGHTEN THE LOCKS USING THE HEX KEY BY TURNING IT CLOCKWISE UNTIL THE MECHANISM LOCKS INSIDE THE CHANNEL.



USE THE M10 HEX KEY TO TIGHTEN THE LOCKS THAT ATTACH THE VESA TV MOUNT TO THE ARMS.



ATTACH THE ASSEMBLED ARMS TO THE "I" SHAPED CENTER VERTICAL SUPPORT USING THE PROVIDED RED THUMBSCREWS AND WING NUTS.



4th Step)

LINE THE MONITOR'S CENTER WITHIN THE CENTER OF THE FRAME. THEN GENTLY HOOK THE UNIT'S BACK ONTO THE FRAME



THE "I" SHAPED CENTER HOOKS ON TO THE BACK OF THE MQXF24 FRAME.

NOTE: EXPODISPLAYS® WILL OFTEN ADD ARROWS ON THE EXTRUSIONS TO INDICATE THE IDEAL LOCATION OF THE MONITORS. SIMPLY CONNECT THE ARROWS.



5th Step)

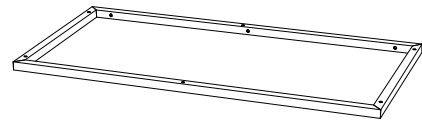
CHECK TO MAKE SURE MONITOR BRACKET IS LEVEL USING BUBBLE INDICATOR ON FRONT



PARTS LIST		
QNTY	LABEL	NAME
1	LVRX1	LEFT VERTICAL RECTANGLE
1	RVRX1	RIGHT VERTICAL RECTANGLE
1	BHRX1	BOTTOM HORIZONTAL RECT.
1	THRX1	TOP HORIZONTAL RECT.
2	CVH2	CENTER VERTICAL HALF
4	GRN	1" GREEN THUMB SCREW
	RED	2" RED THUMB SCREW
1	CT2-4	COUNTERTOP FOR MQX-F22C

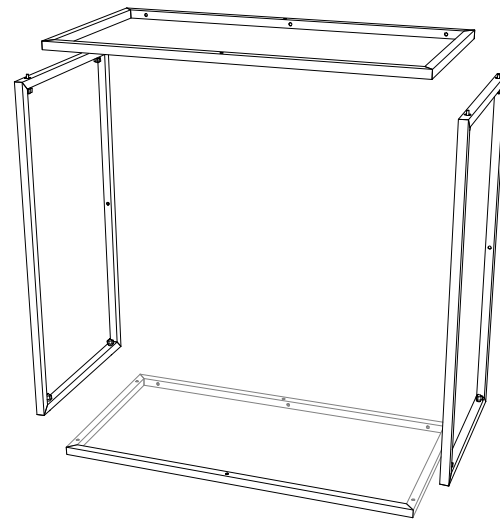
1st Step)

START WITH THE LEFT VERTICAL (LVRX1) ON THE GROUND



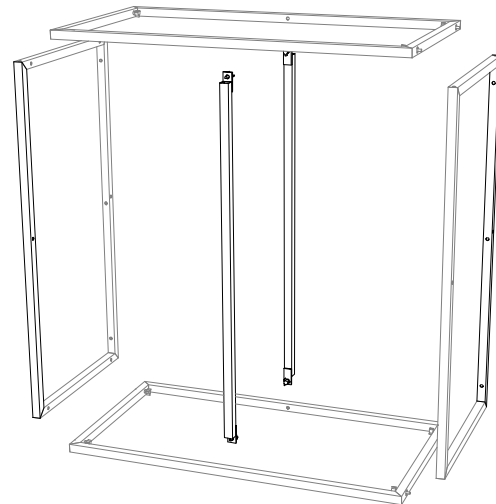
2nd Step)

ATTACH THE TOP HORIZONTAL (THRX1), THE BOTTOM HORIZONTAL (BHRX1), AND THE OTHER RIGHT VERTICAL (RVRX1)



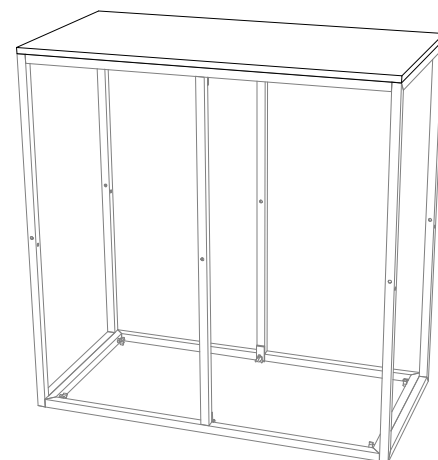
3rd Step)

ROTATE AND ATTACH THE (2) CENTER VERTICAL (CVH2)

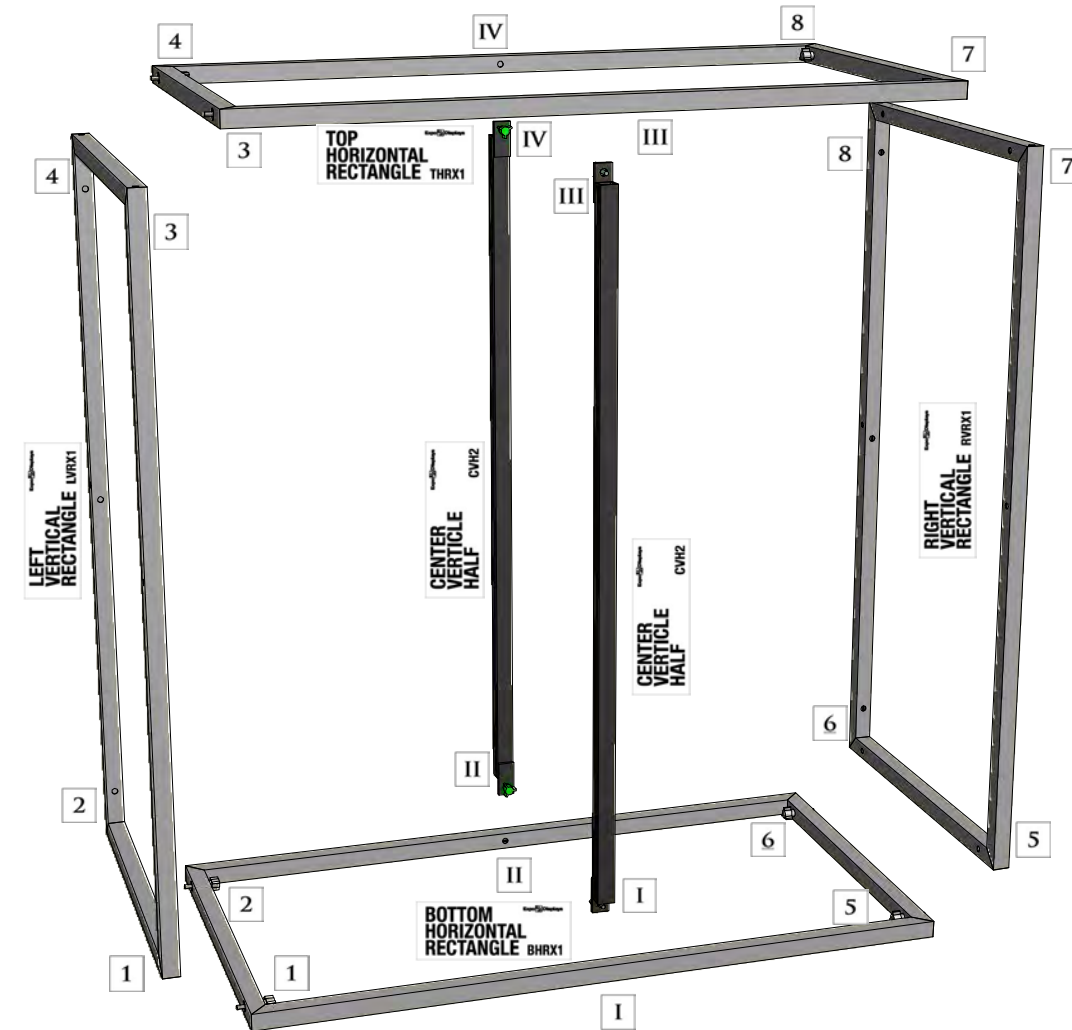


4th Step)

ATTACH THE COUNTERTOP IF NEEDED



MATCH NUMBERS TO CONSTRUCT



EXPO MultiQuad
An ExpoDisplays Product

EXPO

ExpoDisplays

3401 Mary Taylor Road
Birmingham, Alabama 35235
(205) 439-8200

THIS PART USED TO MAKE
MQX-F22
2x2 MAX FRAME



ASSEMBLY
INSTRUCTIONS

2x2 MAX FRAME
MQX-F22

APPENDIX L



WAVE STEM LIGHT (FULLY ASSEMBLED)



WAVE STEM LIGHT (INSTALLED)



WAVE STEM LIGHT (INSTALLED - CLOSE UP)

Sheet Title

**ASSEMBLY
INSTRUCTIONS**

WAVE STEM LIGHT

PARTS LIST		
QNTY	LABEL	NAME
1	LVPX1	LEFT VERTICAL RECTANGLE
1	RVPX1	RIGHT VERTICAL RECTANGLE
1	BHRX2	BOTTOM HORIZONTAL RECT.
1	THRX2	TOP HORIZONTAL RECT.
1	SSPODX1	SHELF
1	CTPODX1	PODIUM COUNTER TOP
12	RED	2" RED THUMB SCREW

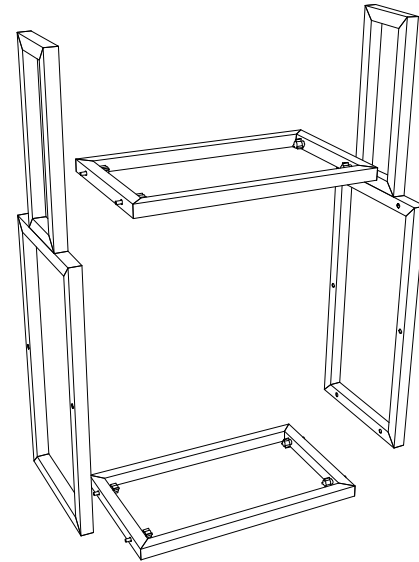
Multiple Podiums

ATTACH MULTIPLE PODIUMS BY RUNNING THE 2" RED THUMBSCREWS THROUGH THE OPEN HOLES OF ONE PODIUM INTO THE THREADED INSERTS OF ANOTHER



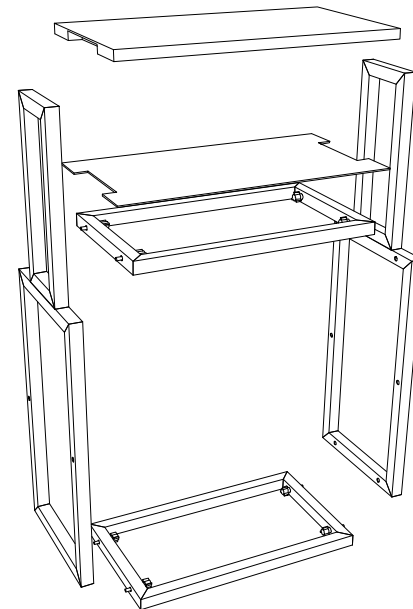
1st Step

START WITH THE BOTTOM HORIZONTAL (BHRX2) ON THE GROUND. ATTACH THE LEFT VERTICAL (LVPX1), AND THE RIGHT VERTICAL (RVPX1). THEN ATTACH THE TOP HORIZONTAL (THRX2)

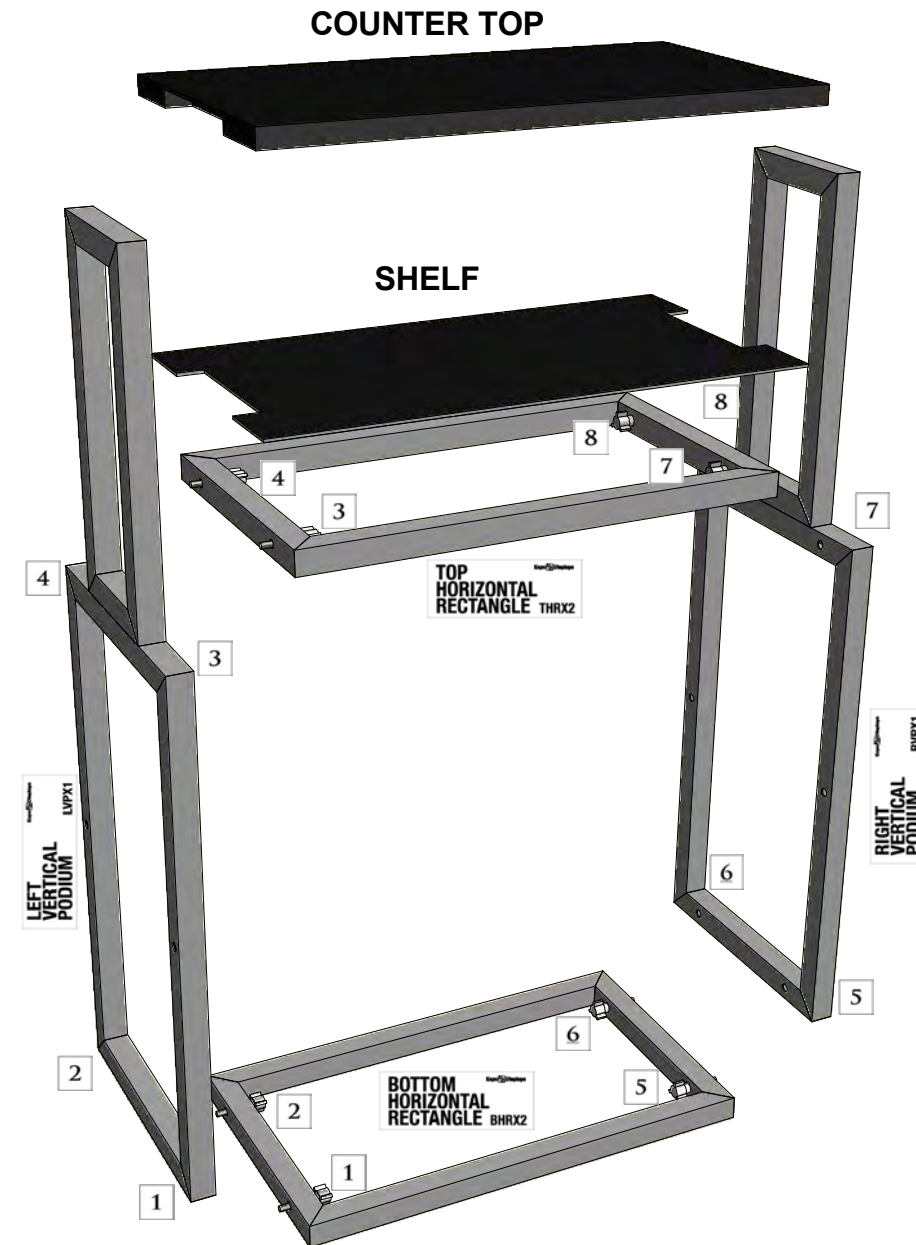


2nd Step

ATTACH THE PODIUM COUNTERTOP AND THE PODIUM SHELF



MATCH NUMBERS TO CONSTRUCT



ExpoDisplays

3401 Mary Taylor Road
Birmingham, Alabama 35235
(205) 439-8200

THIS PART USED TO MAKE
MQX-POD1
1x1 MAX PODIUM

ASSEMBLY INSTRUCTIONS

1 MA O M
M - O 1

APPENDIX W