

WHEN ASSEMBLING **EX PO MultiQuad**

REMEMBER YOUR **ABC**'s...

**A**SSEMBLE EACH COMPONENT SEPARATELY

**B**UILD THE DESIRED LAYOUT

**C**OVER YOUR MULTIQUAD LAYOUT WITH QUADS



**EX PO MultiQuad**<sup>®</sup>  
An **ExpoDisplays** Product

20'x20' Custom MultiQuad



**Expo EX PO Displays**<sup>®</sup>  
A Division of Diamond Displays International

3401 Mary Taylor Road  
Birmingham, Alabama 35235  
(205) 439-8200

Job #: 57817

Project Title

**20'x20' Custom**

**MultiQuad**

Sheet Title

**ASSEMBLY  
INSTRUCTIONS**

**COVER SHEET**



**Expo EX PO Displays**  
A Division of Diamond Displays International

3401 Mary Taylor Road  
Birmingham, Alabama 35235  
(205) 439-8200

Project Title

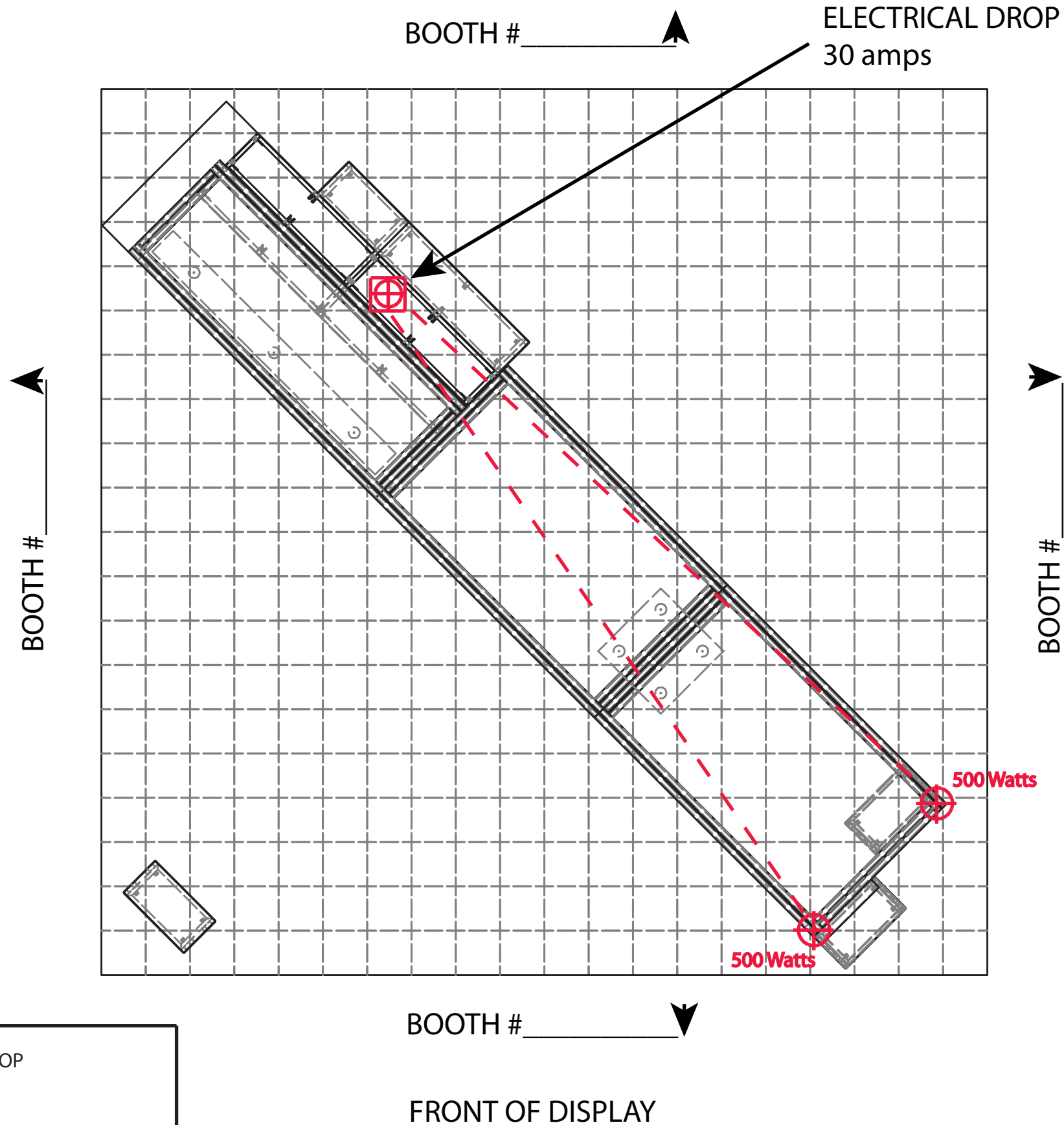
**20'x20' Custom**

**MultiQuad**

Sheet Title

**ASSEMBLY  
INSTRUCTIONS**

**ELECTRICAL PLAN**



	MAIN ELECTRICAL DROP
	ELECTRICAL OUTLET
	POWER CORDS RUN UNDER CARPET

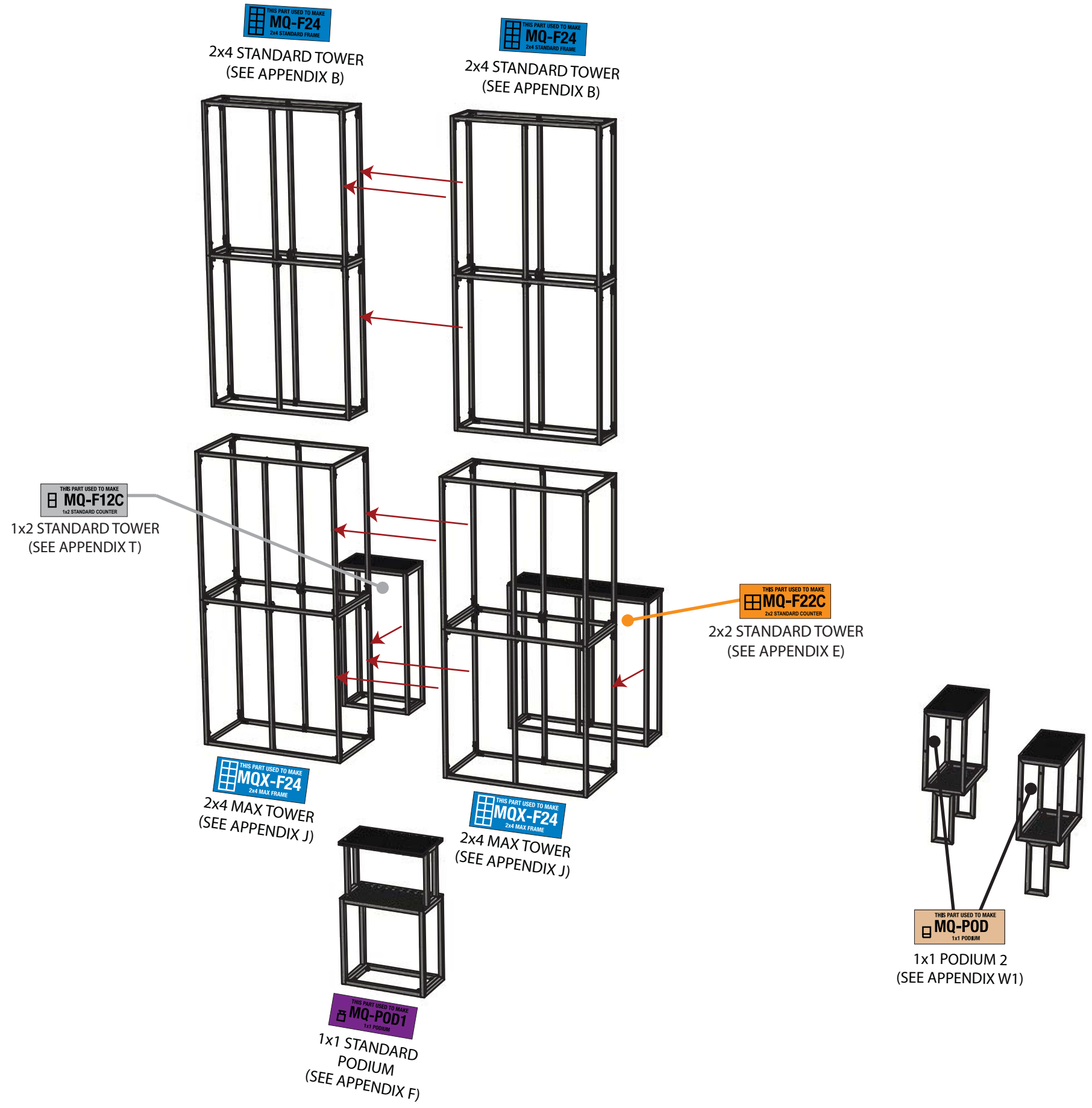
1 Square = 1'-0"



1. PLACE THE FAR LEFT TOWER INTO THE DESIRED LOCATION USING PAGE 2
2. SLIDE ADJACENT TOWER INTO PLACE AND ATTACH USING THE PROVIDED CONNECTORS (SEE APPENDIX A)
3. REPEAT STEP 2 UNTIL ALL THE FRAMES ARE JOINED TOGETHER
4. INSTALL ALL REMAINING ACCESSORIES



3401 Mary Taylor Road  
Birmingham, Alabama 35235  
(205) 439-8200



Project Title

20'x20' Custom

MultiQuad

Sheet Title

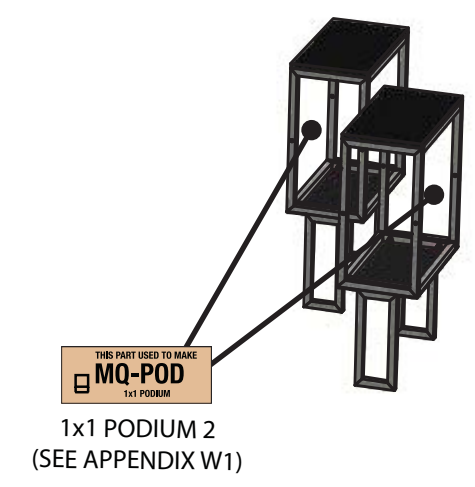
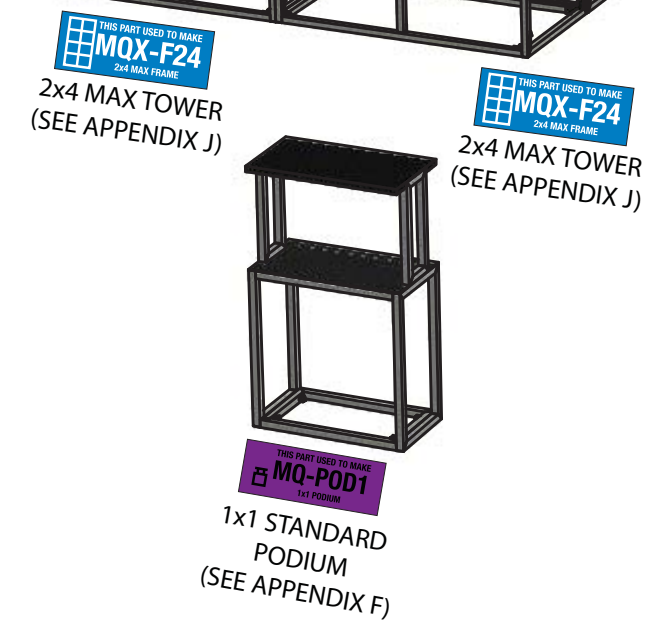
ASSEMBLY INSTRUCTIONS  
EXPLODED LAYOUT

Project Title

**20'x20' Custom  
MultiQuad**

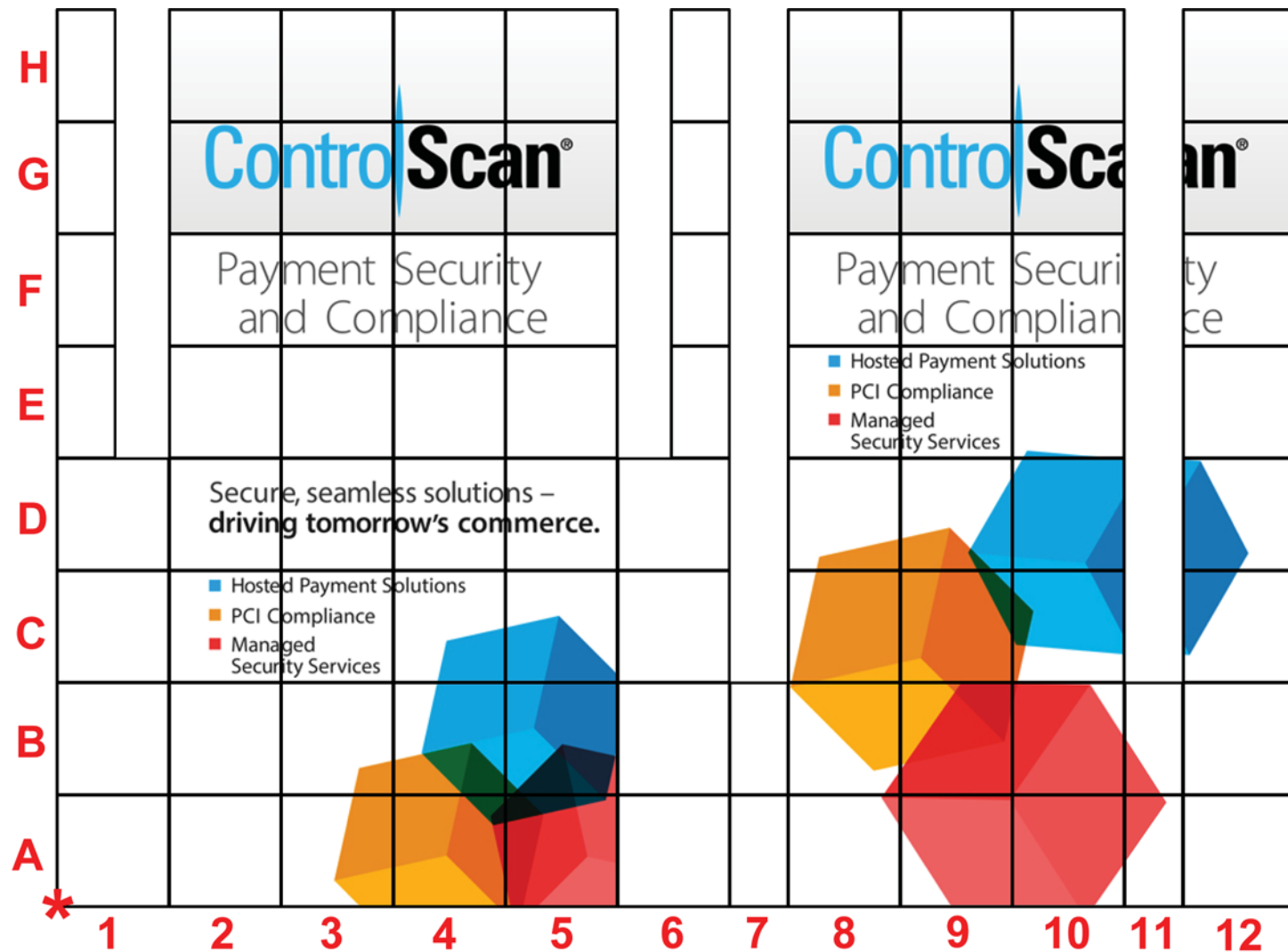
Sheet Title

**ASSEMBLY  
INSTRUCTIONS  
DESIRED LAYOUT**



**PARTS LIST:**

#	LABEL	NAME
1	<b>MQ-POD1</b> 1x1 PODIUM	STANDARD PODIUM
1	<b>MQ-F12C</b> 1x2 STANDARD COUNTER	1x2 STANDARD TOWER
1	<b>MQ-F22C</b> 2x2 STANDARD COUNTER	2x2 STANDARD TOWER
2	<b>MQ-F24</b> 2x4 STANDARD FRAME	2x4 STANDARD TOWER
2	<b>MQX-F24</b> 2x4 MAX FRAME	2x4 MAX TOWER
2	<b>MQ-POD</b> 1x1 PODIUM	1x1 PODIUM 2



MAIN TOWER FLATTENED ELEVATION



PODIUM "A" FLATTENED ELEVATION



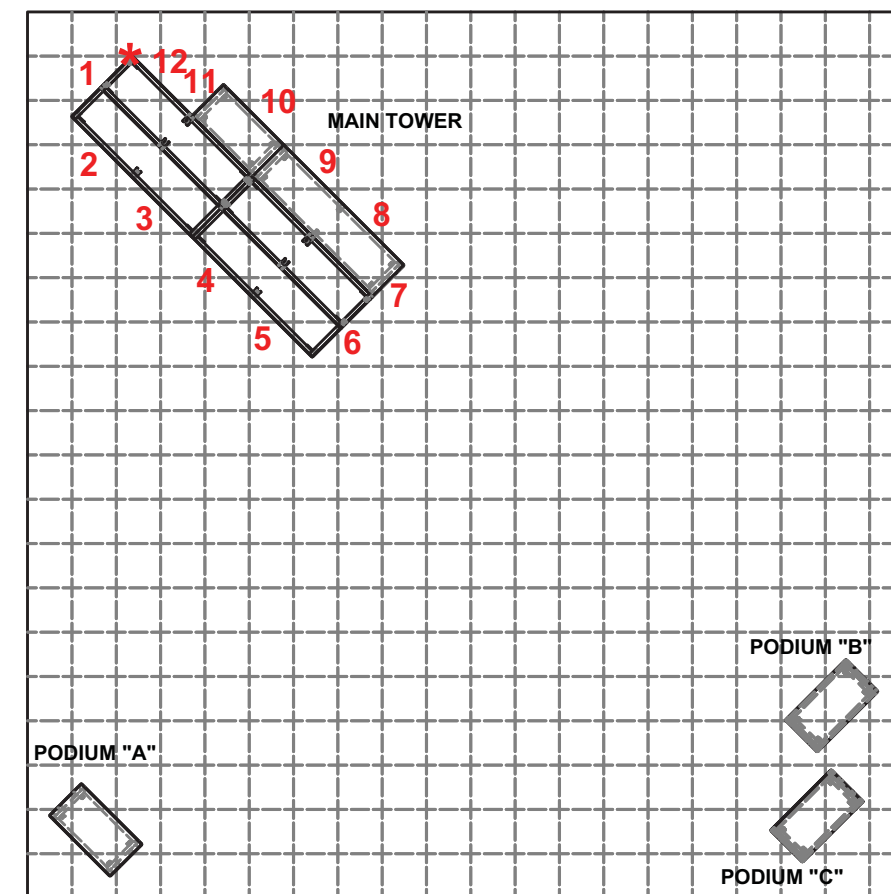
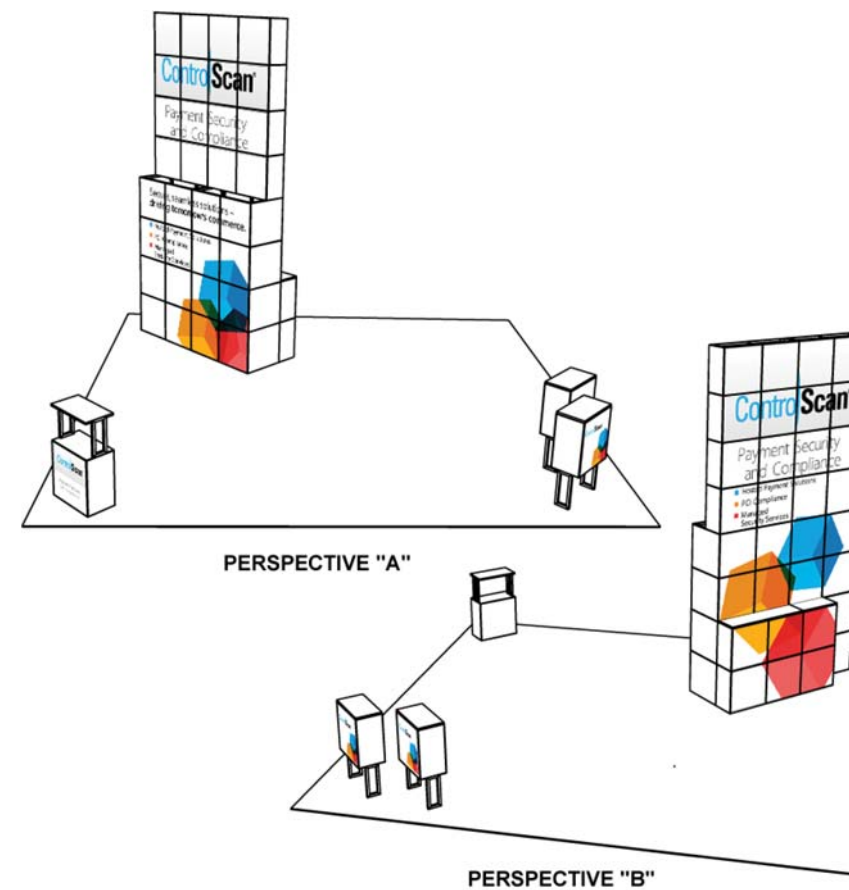
PODIUM "B" FLATTENED ELEVATION



PODIUM "C" FLATTENED ELEVATION

**PARTS LIST:**

#	SIZE	NAME
78	23x23	STANDARD QUAD
18	12x23	SIDE QUAD



\* = ORIGIN

PLAN VIEW



**Expo EXPO Displays**  
A Division of Diamond Displays International

3401 Mary Taylor Road  
Birmingham, Alabama 35235  
(205) 439-8200

Project Title

**20'x20' Custom**

**MultiQuad**

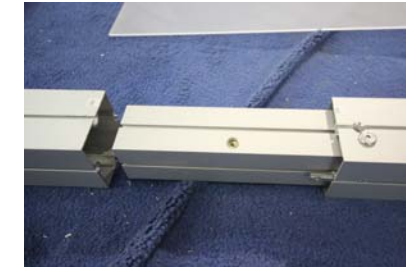
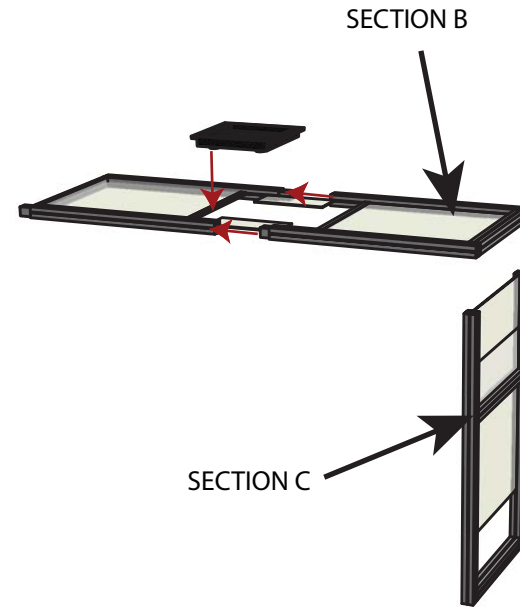
Sheet Title

**ASSEMBLY INSTRUCTIONS GRAPHICS LAYOUT**





STEP 1: SET CANOPY SECTION A IN PLACE ON TOP OF THE (2) 2X4 MAX FRAMES. SECURE CANOPY SECTION TO FRAMES BY CLAMPING INTO PLACE FROM BELOW, USING THE CLAMP BAR. SEE PHOTO.

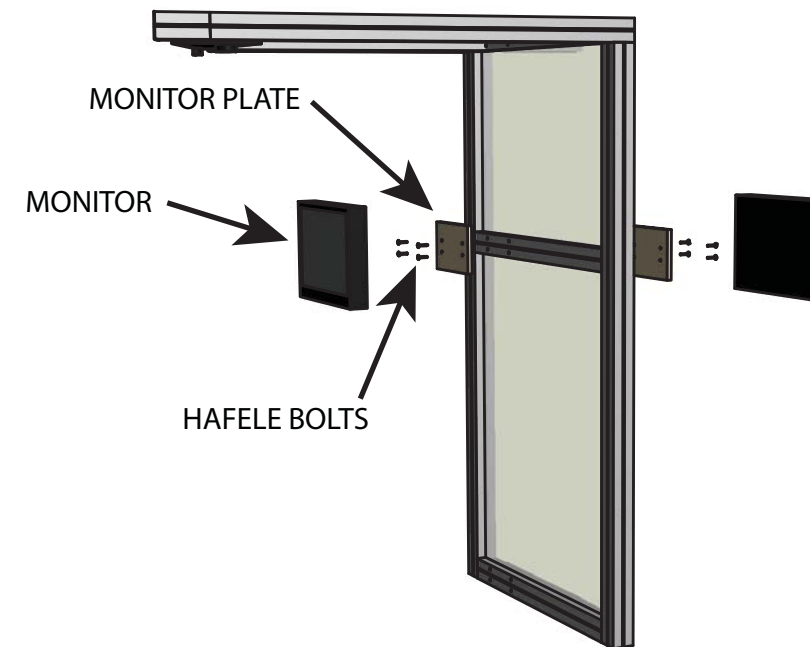


STEP 2: CONNECT THE TWO SUB-SECTIONS OF CANOPY SECTION B TOGETHER, USING THE DECALS TO LINE UP THE SECTIONS CORRECTLY. ATTACH SECTION C TO SECTION B. SEE PHOTOS

**NOTE : FOUR PEOPLE WITH LADDERS ARE SUGGESTED TO ATTACH THE CANOPY TO THE MULTIQUAD TOWER.**



STEP 3: ATTACH SECTIONS B&C AS WELL AS THE CANOPY LEG TO SECTION A, AS SHOWN. CONNECT THE POWER SUPPLY TO THE (2) LIGHT BOXES.



TO ATTACH MONITORS:

LOCATE THE (2) PLYWOOD MONITOR PLATES AND BOLT TO THE HORIZONTAL EXTRUSION USING THE PROVIDED HAFELE BOLTS. MONITOR PLATES HAVE THE MONITOR MOUNT RECEIVER PRE- ATTACHED (NOT SHOWN).

ATTACH MONITOR TO THE MONITOR PLATES BY SLIDING THE MONITOR MOUNTS ON BACK OF MONITOR ONTO THE MONITOR MOUNT RECEIVER ON THE MONITOR PLATE.



**Expo EX PO Displays**  
A Division of Diamond Displays International

3401 Mary Taylor Road  
Birmingham, Alabama 35235  
(205) 439-8200

Project Title

**20'x20' Custom**

**MultiQuad**

Sheet Title

**ASSEMBLY INSTRUCTIONS CANOPY ASSEMBLY**



SHELF SUPPORT EXTRUSION

SHELF SUPPORT EXTRUSION

SHELF SUPPORT BRACKET



STEP 2: ATTACH THE SHELF SUPPORT BRACKETS TO THE OUTSIDE OF THE SHELF SUPPORT EXTRUSION AND THE CANOPY LEG. SEE PHOTOS.

STEP 1: ATTACH THE SHELF SUPPORT EXTRUSION TO THE INSIDE OF THE LEFT-HAND 2X4 MAX FRAME USING THUMBSCREWS. SEE PHOTOS.



STEP 3: ATTACH THE QUADS AS SHOWN WITH THE NOTCH FOR THE SHELF BRACKET. PLACE SHELVES ON BRACKETS AS SHOWN.

Project Title

**20'x20' Custom**

**MultiQuad**

Sheet Title

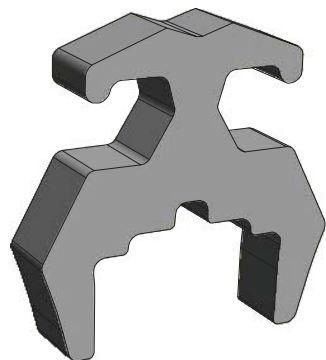
**ASSEMBLY  
INSTRUCTIONS**

**SHELF ASSEMBLY**



**FRAME CLAMP INSTRUCTION  
MQ-CLMP**

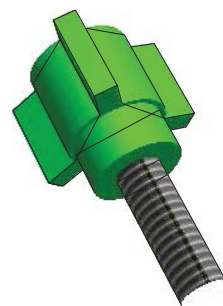
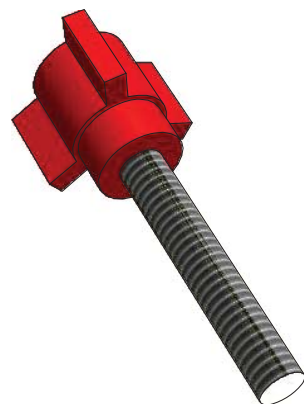
**(NOT REQUIRED IN EVERY CONFIGURATION)**



THE MQ-CLMP IS A FRICTION-FIT CONNECTOR / ALIGNMENT TOOL THAT DOES NOT REQUIRE TOOLS. THEY ARE TO BE USED IN ABNORMAL MULTIQUAD FRAME CONFIGURATIONS OR AS ADDITIONAL FRAME SECURITY IN SPECIAL SITUATIONS



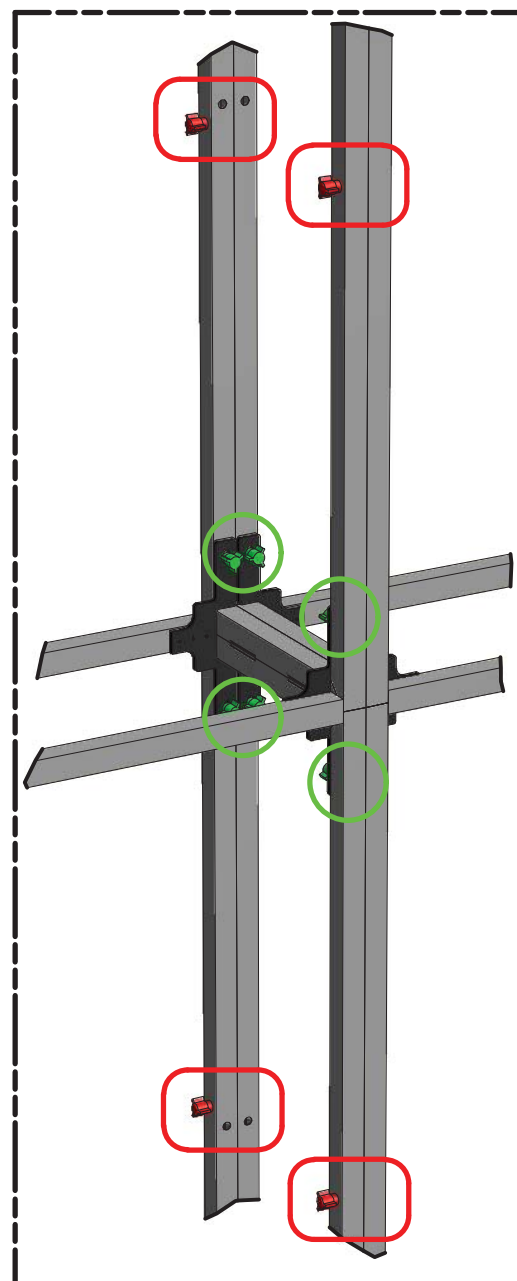
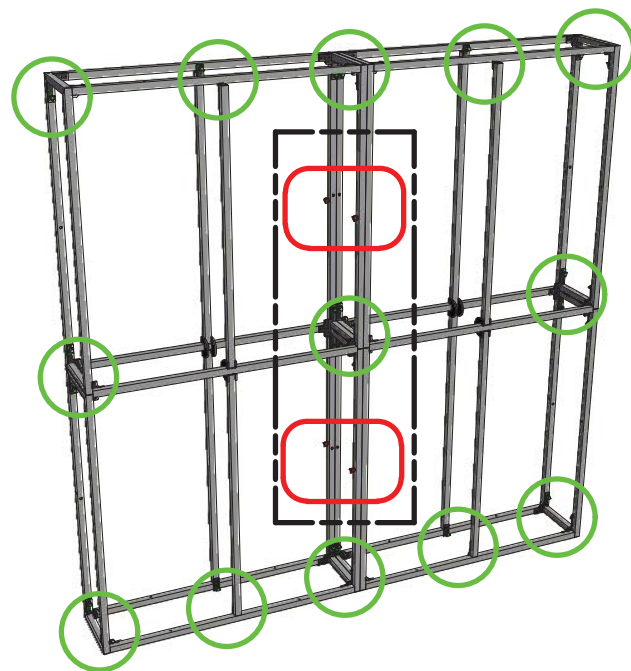
**THUMB SCREW INSTRUCTION  
MQ-TSR2 / MQ-TSG1**



THE 2" RED THUMB SCREW IS USED TO CONNECT MULTIQUAD FRAMES TO OTHER MULTIQUAD FRAMES. EACH FRAME HAS RIVET NUT ON ONE SIDE AND A HOLE ON THE OTHER TO ALLOW FRAME TO FRAME CONNECTION

THE 1" GREEN THUMB SCREWS ARE USED WHEN ASSEMBLING 1x4 AND 2x4 FRAMES. SEE APPENDIX PAGES

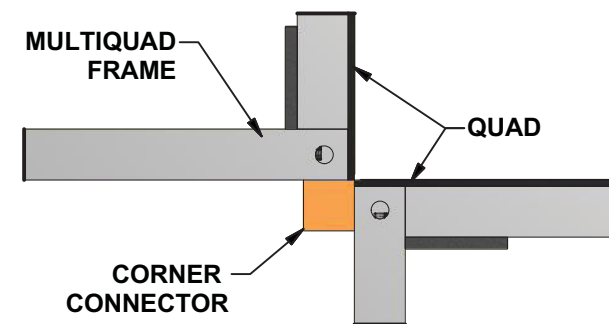
**DUE TO THE RIVET NUTS, ALL FRAMES HAVE A LEFT AND RIGHT SIDE. VERIFY FRAME ORIENTATION TO ALLOW FRAME TO FRAME CONNECTION**



**CORNER CONNECTOR INSTRUCTION  
MQ-BTW**

**(NOT REQUIRED IN EVERY CONFIGURATION)**

THE MQ-BTW CORNER ALIGNMENT TOOL IS DESIGNED TO AID IN THE ALIGNMENT OF FRAMES AS NEEDED IN SOME MULTIQUAD CONFIGURATIONS.



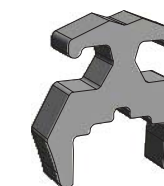
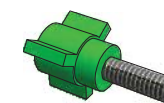
AFTER TWO MULTIQUAD FRAMES ARE SET "CORNER-TO-CORNER" THE MQ-BTW SIMPLY ATTACHES TO THE EXISTING MAGNETS ON THE FRAME



**Expo Displays**

3401 Mary Taylor Road  
Birmingham, Alabama 35235  
(205) 439-8200

Drawn By: AKHIII



**ASSEMBLY  
INSTRUCTIONS**

CONNECTORS & ALIGNMENT TOOLS

APPENDIX A

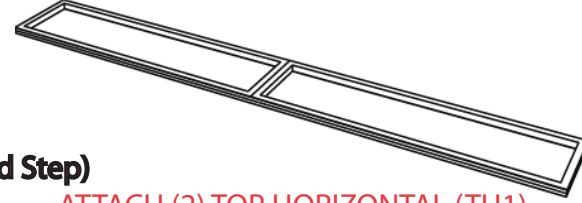


**PARTS LIST:**

#	LABEL	NAME
1	LVH1	LEFT VERTICAL HINGED
1	RVH1	RIGHT VERTICAL HINGED
2	BH1	BOTTOM HORIZONTAL
2	MH1	MIDDLE HORIZONTAL
2	TH1	TOP HORIZONTAL
2	CVH1	CENTER VERTICAL HINGED
20	GRN	1" THUMB SCREWS
4	RED	2" THUMB SCREWS

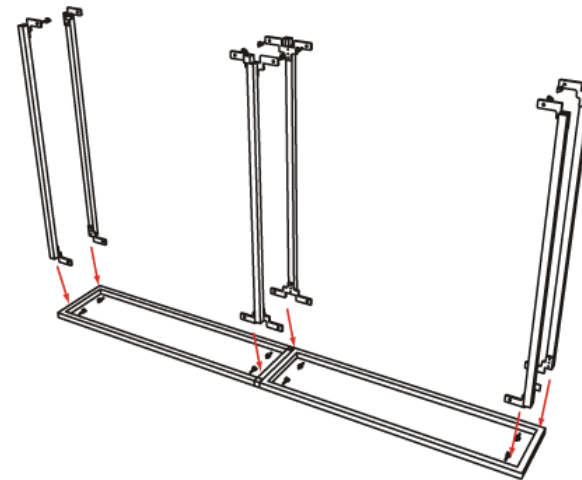
**1st Step)**

START WITH THE LEFT VERTICAL HINGE (LVH1) ON THE GROUND



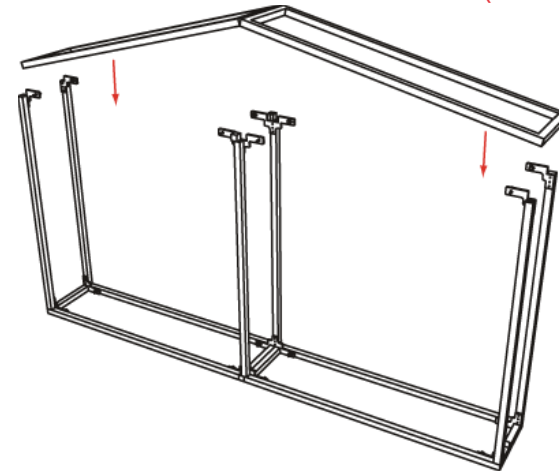
**2nd Step)**

ATTACH (2) TOP HORIZONTAL (TH1), (2) MIDDLE HORIZONTAL (MH1), (2) BOTTOM HORIZONTAL (BH1)



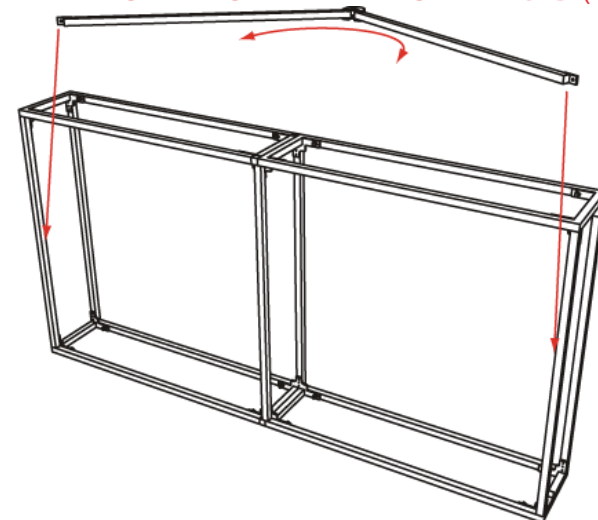
**3rd Step)**

ATTACH THE RIGHT HINGED SIDE (RVH1)

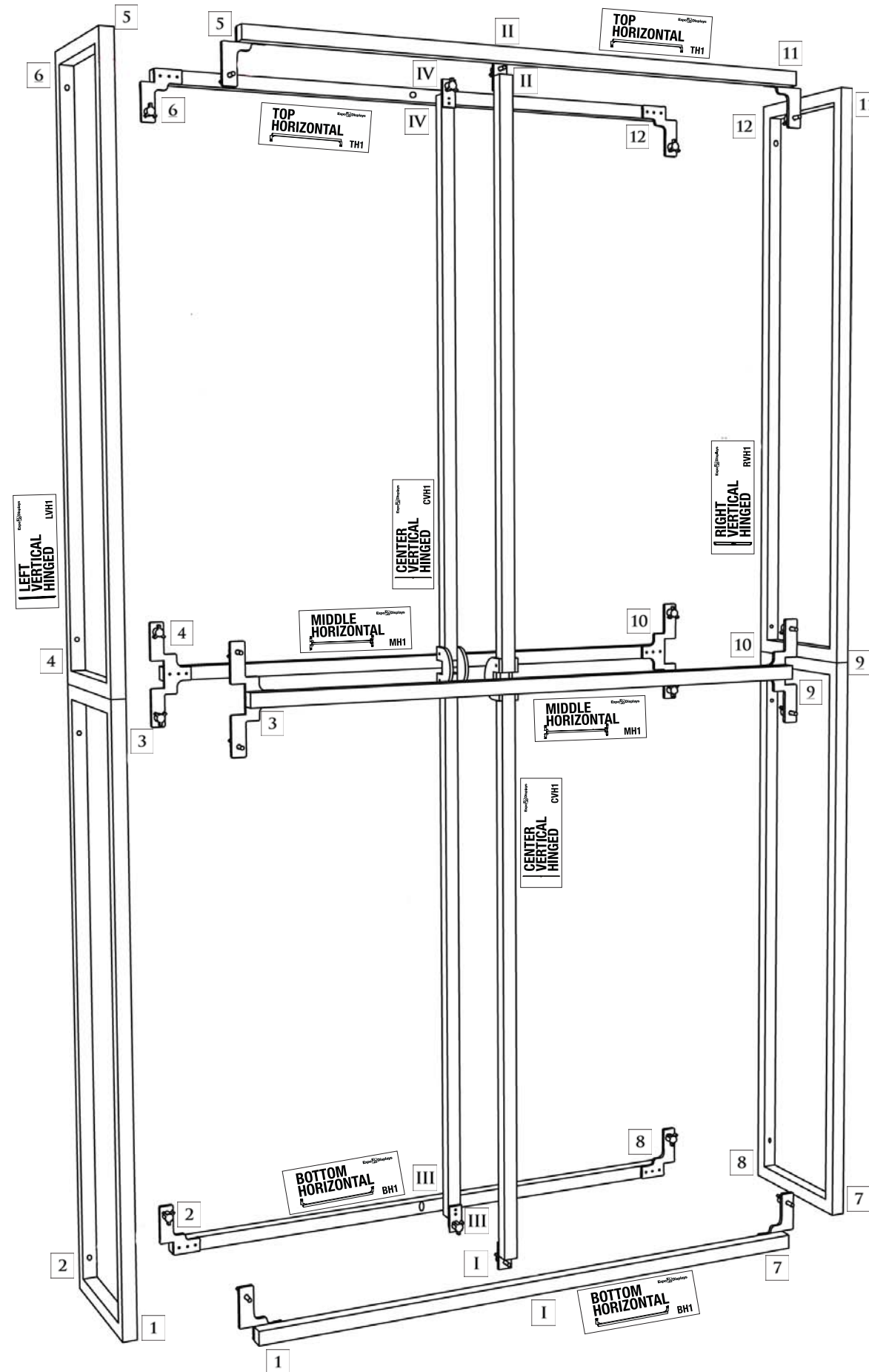


**4th Step)**

ATTACH THE CENTER VERTICAL HINGED (CVH1)



\*MATCH NUMBERS TO CONSTRUCT.



**Expo EX PO Displays**  
A Division of Diamond Displays International

3401 Mary Taylor Road  
Birmingham, Alabama 35235  
(205) 439-8200

Drawn By: AKHIII

THIS PART USED TO MAKE  
**MQ-F24**  
2x4 STANDARD FRAME



Sheet Title

**ASSEMBLY INSTRUCTIONS**  
**2x4 STANDARD FRAME**  
**MQ-F24**

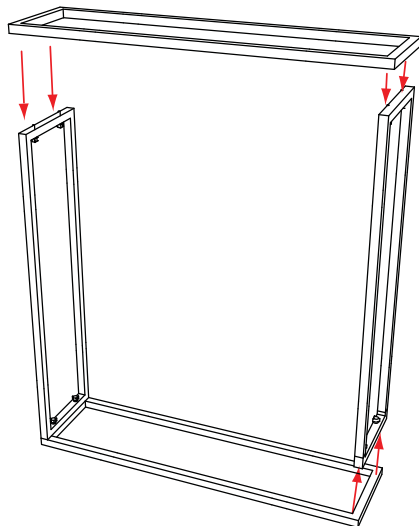
APPENDIX B

**PARTS LIST:**

#	LABEL	NAME
1	LVR1	LEFT VERTICAL RECTANGLE
1	RVR1	RIGHT VERTICAL RECTANGLE
1	BHR1	BOTTOM HORIZONTAL RECT.
2	CVH2	CENTER VERTICAL HALF
1	THR2	TOP HORIZONTAL RECTANGLE
4	GRN	1" THUMB SCREWS
8	RED	2" THUMB SCREWS
1	CT1246	COUNTER TOP FOR MQ-F22C

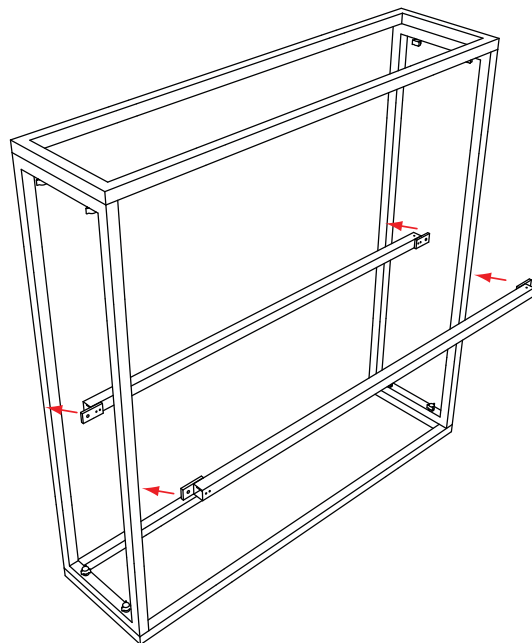
**1st Step)**

START WITH THE (LVR1) ON THE GROUND. ATTACH THE (THR1), (BHR1), AND (RVR1)



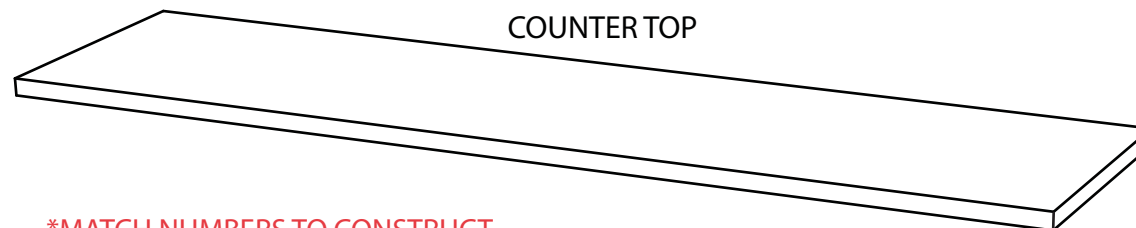
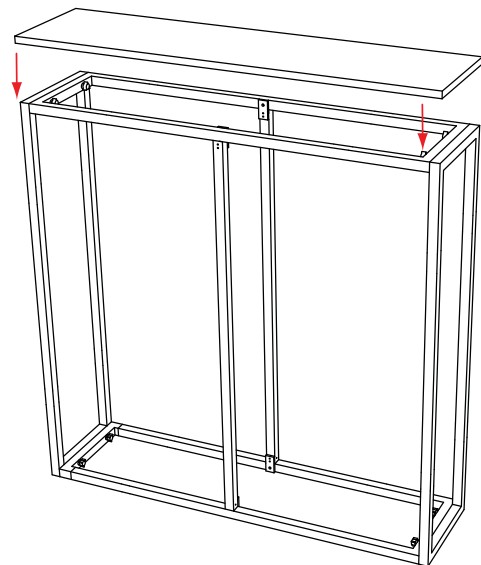
**2nd Step)**

ATTACH THE (2) CENTER VERTICLE (CVH2)

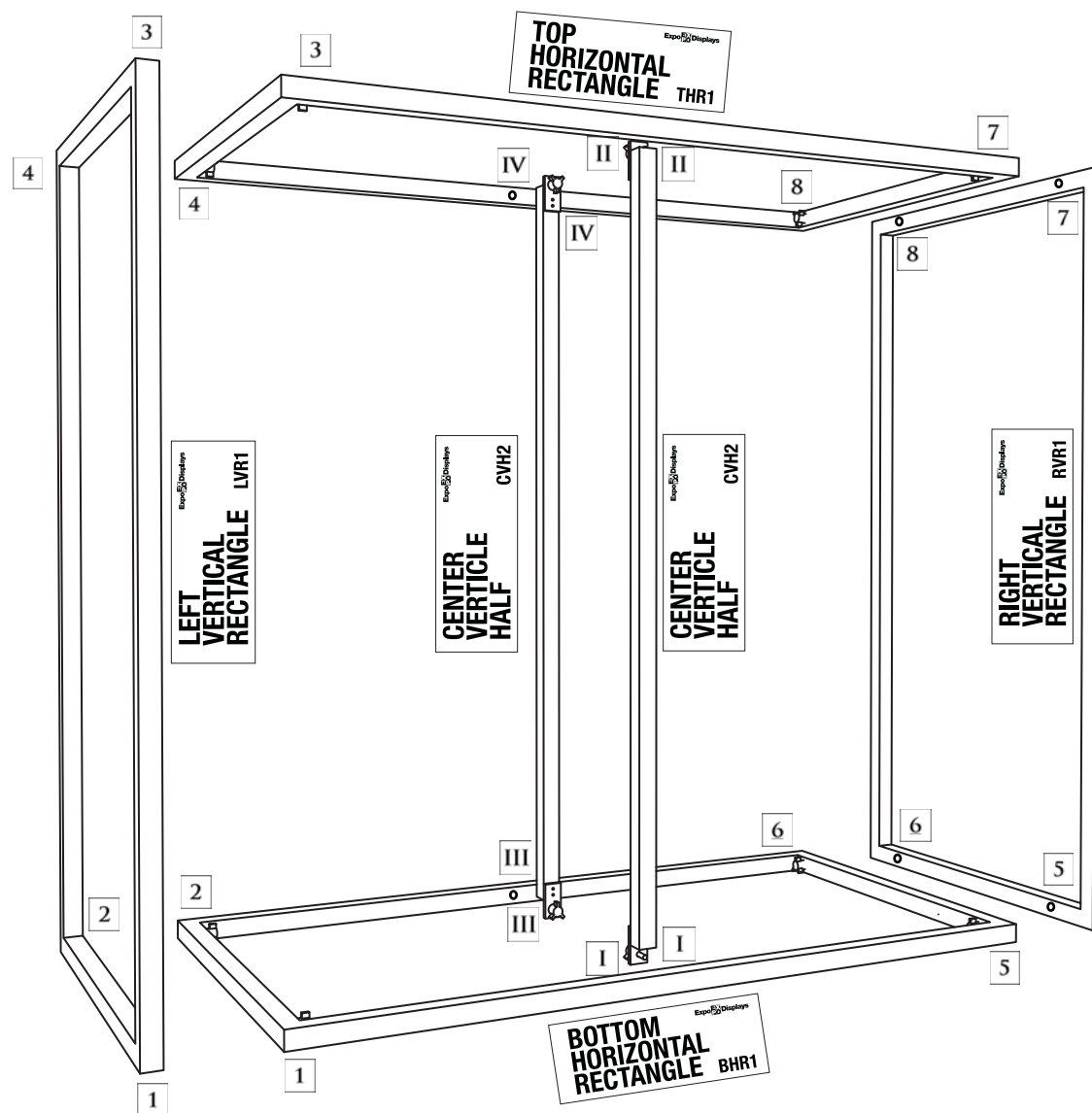


**3rd Step)**

STAND UPRIGHT AND PLACE COUNTER ON TOP



\*MATCH NUMBERS TO CONSTRUCT.



**Expo EX PO Displays**  
A Division of Diamond Displays International

3401 Mary Taylor Road  
Birmingham, Alabama 35235  
(205) 439-8200

Drawn By: AKHIII

THIS PART USED TO MAKE  
**MQ-F22C**  
2x2 STANDARD COUNTER

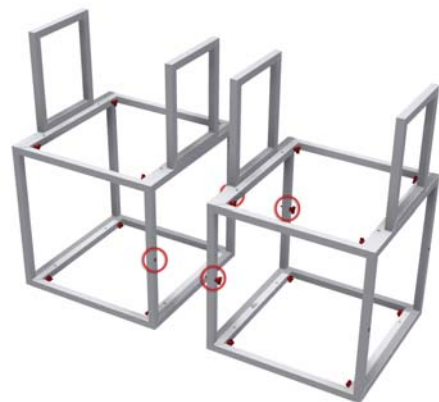
Sheet Title

**ASSEMBLY INSTRUCTIONS**  
**2x2 STANDARD COUNTER MQ-F22C**

APPENDIX E

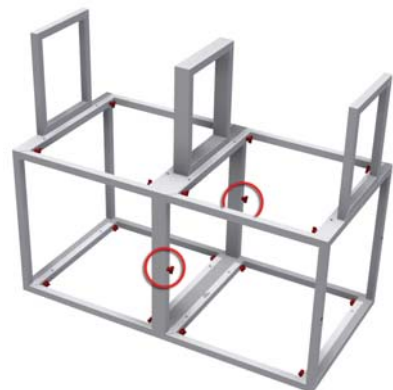
**PARTS LIST:**

#	LABEL	NAME
1	LVP1	LEFT VERTICAL PODIUM
1	RVP1	RIGHT VERTICAL PODIUM
1	BHR2	BOTTOM HORIZONTAL
1	THR2	TOP HORIZONTAL RECTANGLE
1	SSPOD1	SHELF
1	CTPOD1	PODIUM COUNTER TOP
0	GRN	1" THUMB SCREWS
12	RED	2" THUMB SCREWS



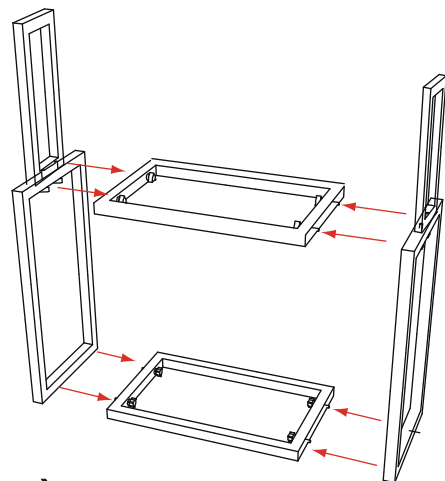
**Joining your podiums)**

ATTACH MULTIPLE PODIUMS BY RUNNING THE 2" RED THUMBSCREWS THROUGH THE OPEN HOLES OF ONE PODIUM INTO THE THREADED INSERTS OF ANOTHER.



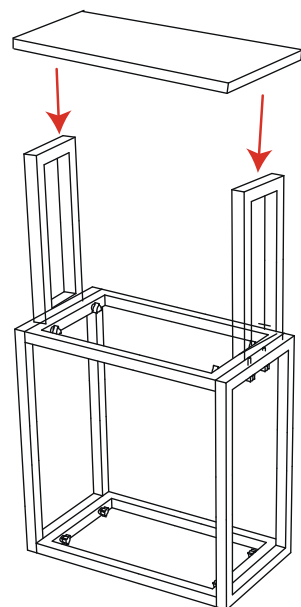
**1st Step)**

START WITH THE (BHR2) ON THE GROUND. ATTACH THE (LVP1), AND (RVP1) THEN ATTACH THE (THR2)



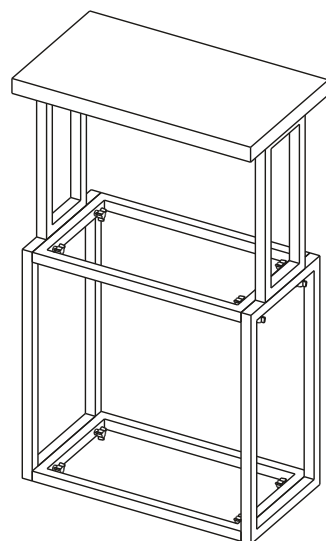
**2nd Step)**

ATTACH THE PODIUM COUNTER TOP

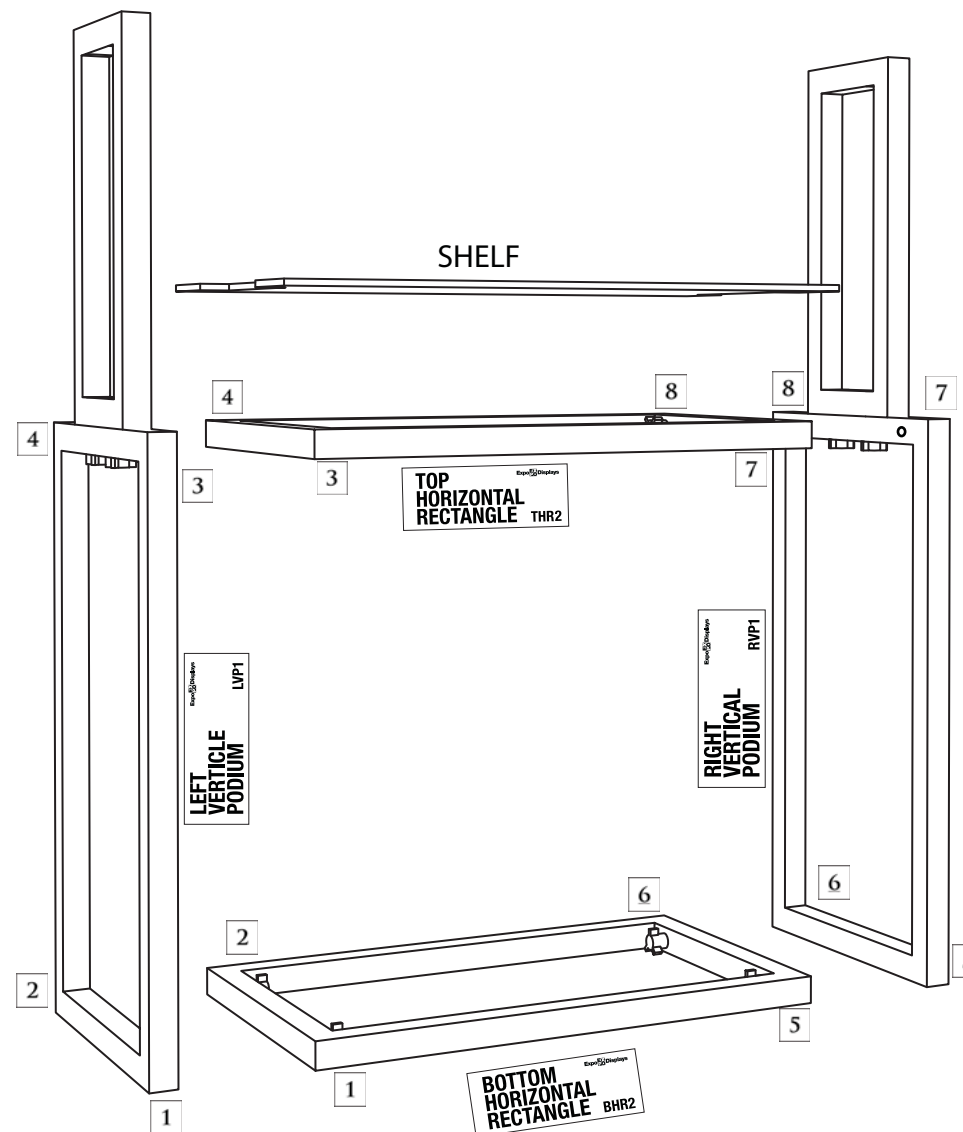
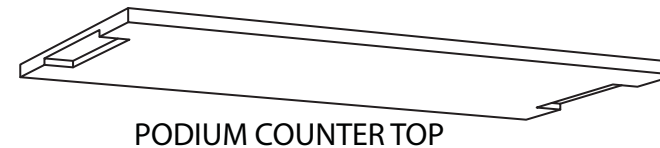


**3rd Step)**

ATTACH THE SHELF



\*MATCH NUMBERS TO CONSTRUCT.



**Expo EXPO Displays**  
A Division of Diamond Displays International

3401 Mary Taylor Road  
Birmingham, Alabama 35235  
(205) 439-8200

Drawn By: NRI

THIS PART USED TO MAKE  
**MQ-POD1**  
1x1 PODIUM

ASSEMBLY INSTRUCTIONS  
1x1 STANDARD PODIUM  
MQ-POD1

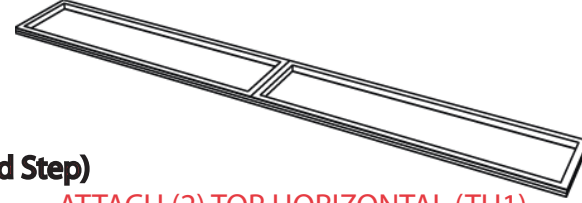


**PARTS LIST:**

#	LABEL	NAME
1	LVHX	LEFT VERTICAL HINGED
1	RVHX	RIGHT VERTICAL HINGED
2	BH1	BOTTOM HORIZONTAL
2	MH1	MIDDLE HORIZONTAL
2	TH1	TOP HORIZONTAL
1	CVH1	CENTER VERTICAL HINGED
20	GRN	1" THUMB SCREWS
4	RED	2" THUMB SCREWS

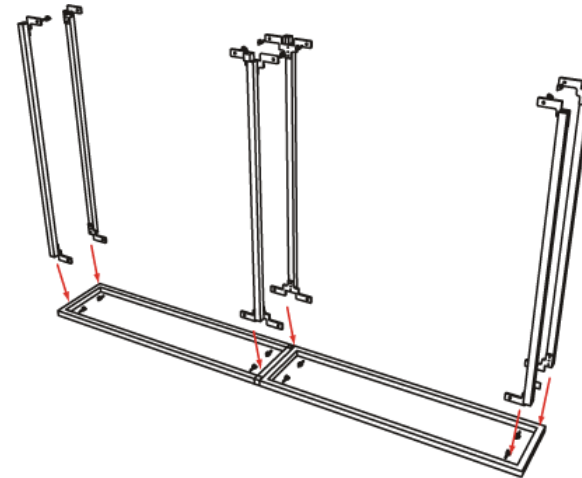
**1st Step)**

START WITH THE LEFT VERTICAL HINGE (LVH1) ON THE GROUND



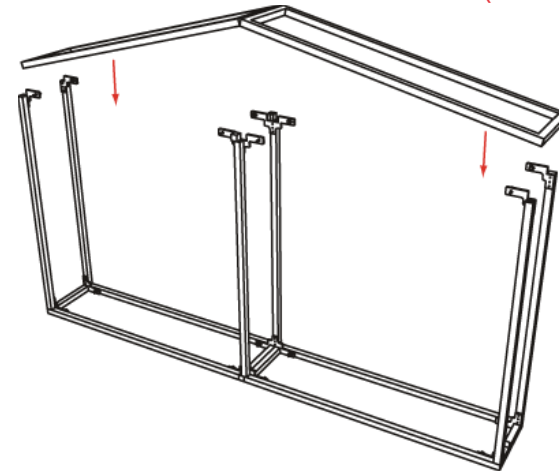
**2nd Step)**

ATTACH (2) TOP HORIZONTAL (TH1), (2) MIDDLE HORIZONTAL (MH1), (2) BOTTOM HORIZONTAL (BH1)



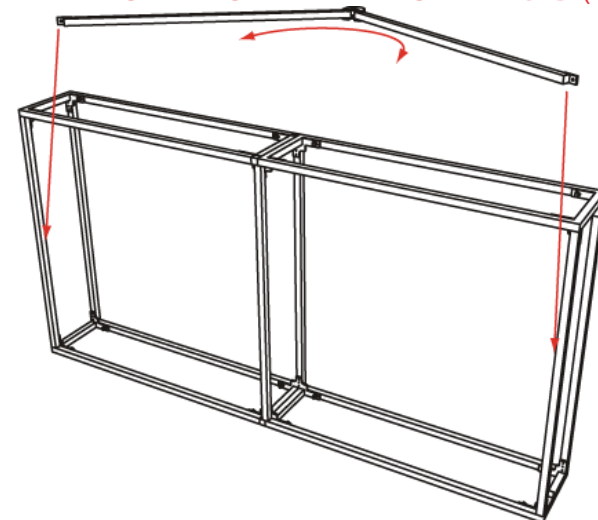
**3rd Step)**

ATTACH THE RIGHT HINGED SIDE (RVH1)

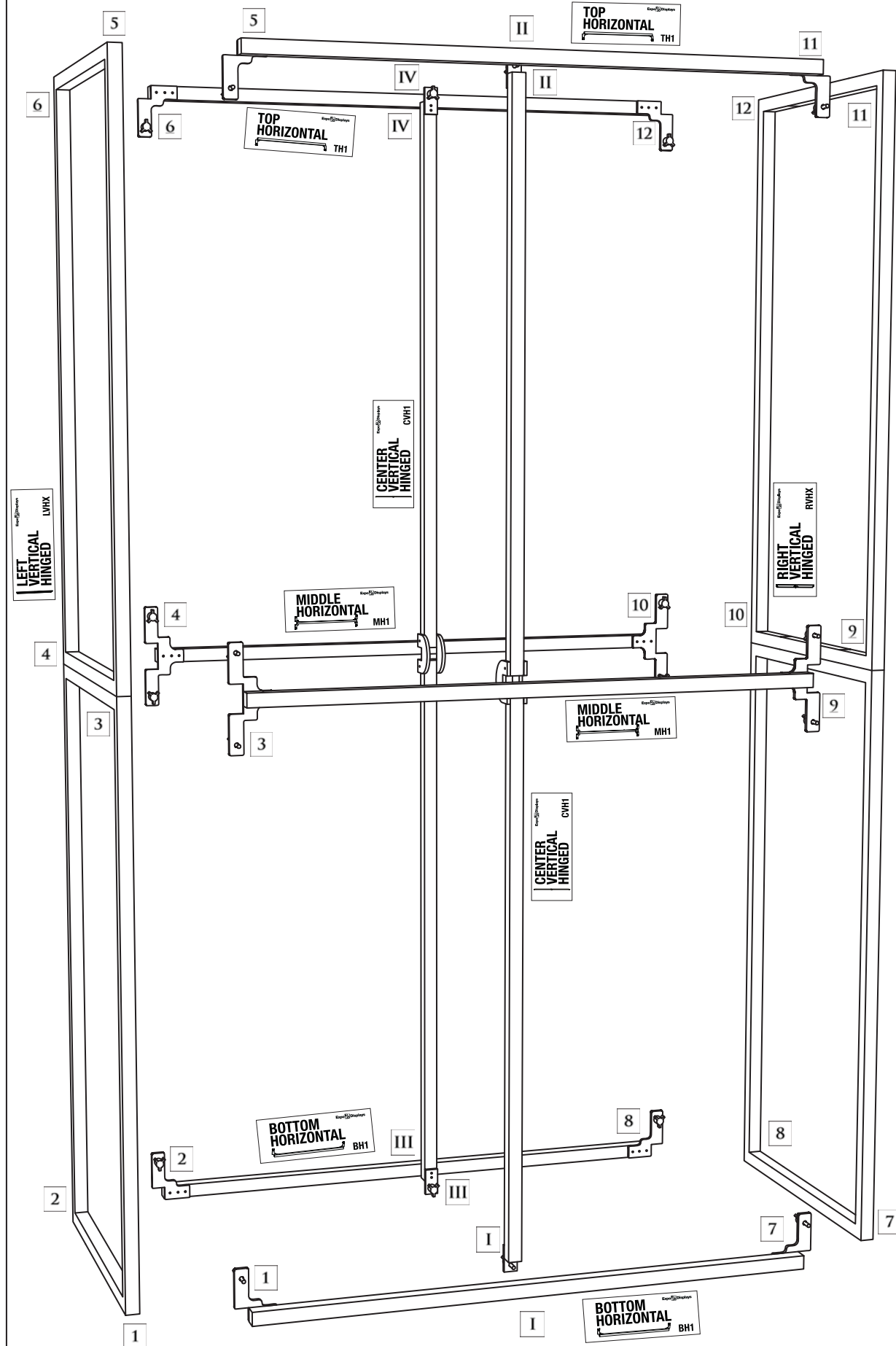


**4th Step)**

ATTACH THE CENTER VERTICAL HINGED (CVH1)



\*MATCH NUMBERS TO CONSTRUCT.



**Expo EX PO Displays**  
A Division of Diamond Displays International

3401 Mary Taylor Road  
Birmingham, Alabama 35235  
(205) 439-8200

Drawn By: AKHIII

THIS PART USED TO MAKE  
**MQX-F24**  
2x4 MAX FRAME

Sheet Title

**ASSEMBLY INSTRUCTIONS**  
**2x4 MAX FRAME**  
**MQX-F24**

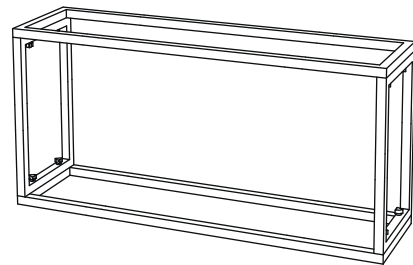
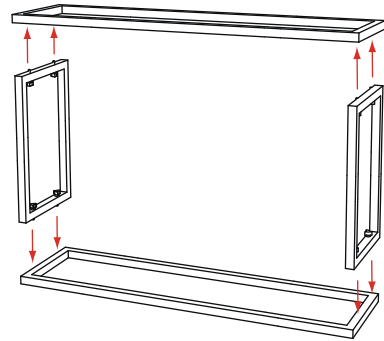
APPENDIX J

**PARTS LIST:**

#	LABEL	NAME
1	LVR1	LEFT VERTICAL RECTANGLE
1	RVR1	RIGHT VERTICAL RECTANGLE
1	BHR2	BOTTOM HORIZONTAL
1	THR2	TOP HORIZONTAL RECTANGLE
1	CT1223	COUNTER TOP
8	RED	2" THUMB SCREWS
0	GRN	1" THUMB SCREWS

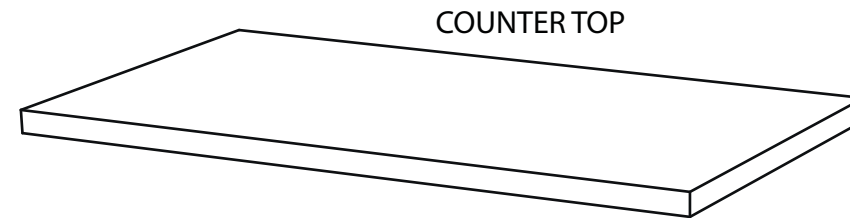
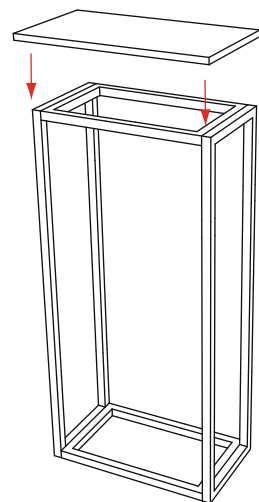
**1st Step)**

START WITH THE (LVR1) ON THE GROUND. ATTACH THE (THR2), AND (BHR2) THEN ATTACH THE (RVR1)

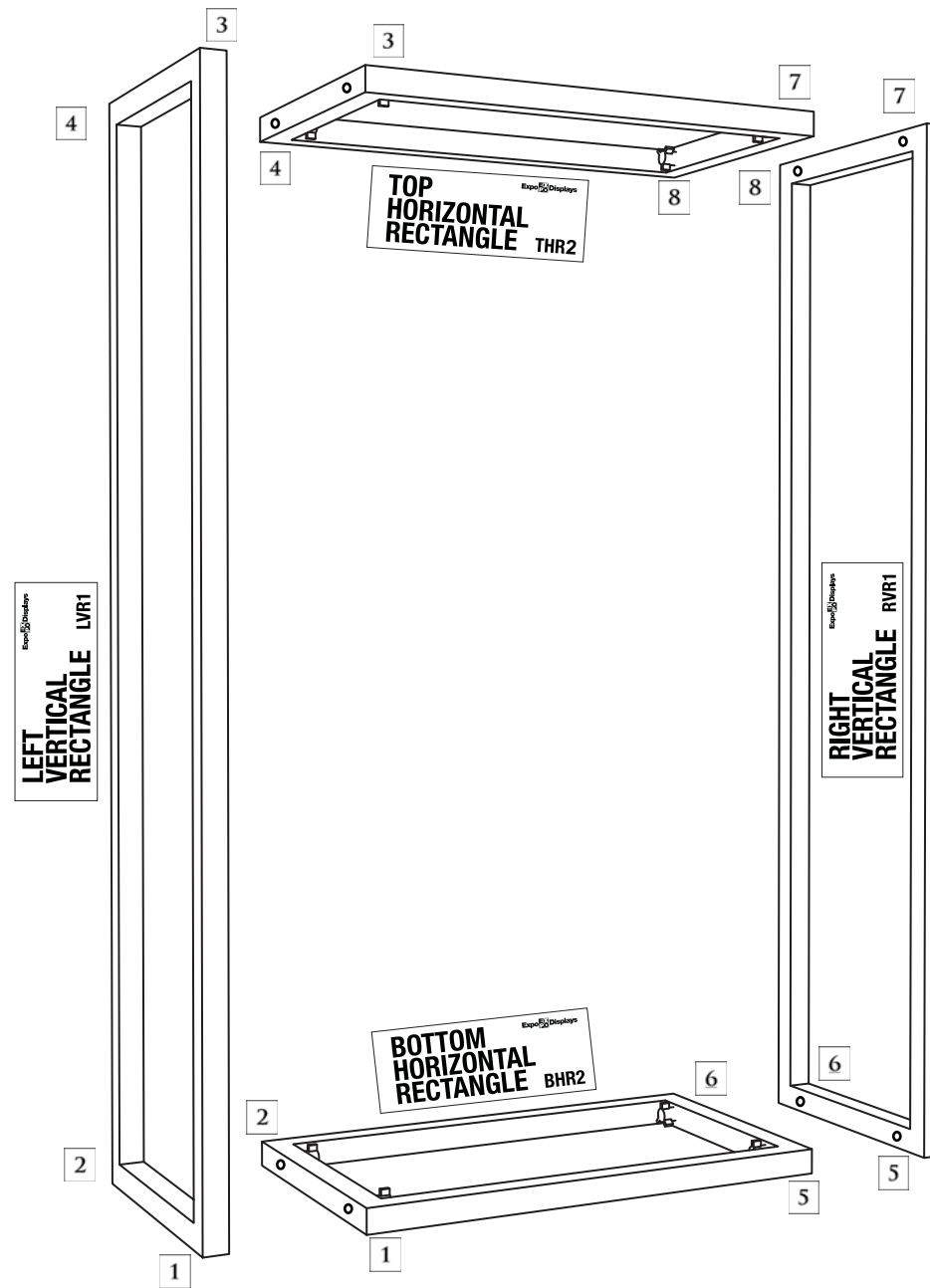


**2nd Step)**

ATTACH THE COUNTER TOP



\*MATCH NUMBERS TO CONSTRUCT.



**Expo EX PO Displays**  
A Division of Diamond Displays International

3401 Mary Taylor Road  
Birmingham, Alabama 35235  
(205) 439-8200

Drawn By: AKHIII

THIS PART USED TO MAKE  
**MQ-F12**  
1X2 STANDARD FRAME

Sheet Title

**ASSEMBLY  
INSTRUCTIONS  
1X2 STND COUNTER  
MQ-F12C**

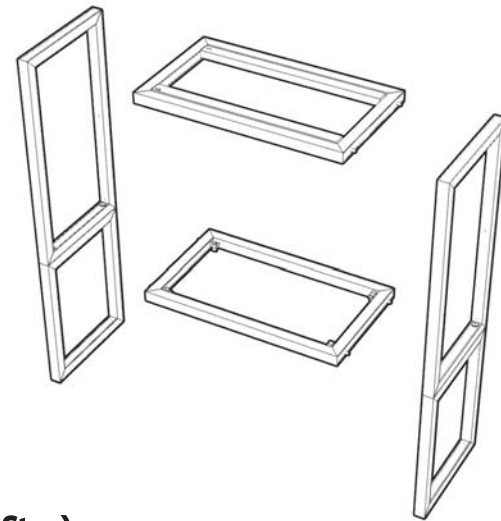
APPENDIX T

**PARTS LIST:**

#	LABEL	NAME
1	LVP2	LEFT VERTICAL PODIUM 2
1	RVP2	RIGHT VERTICAL PODIUM 2
1	BHR2	BOTTOM HORIZONTAL
1	THR2	TOP HORIZONTAL RECTANGLE
1	CTPOD2	COUNTERTOP
8	RED	2" THUMB SCREWS

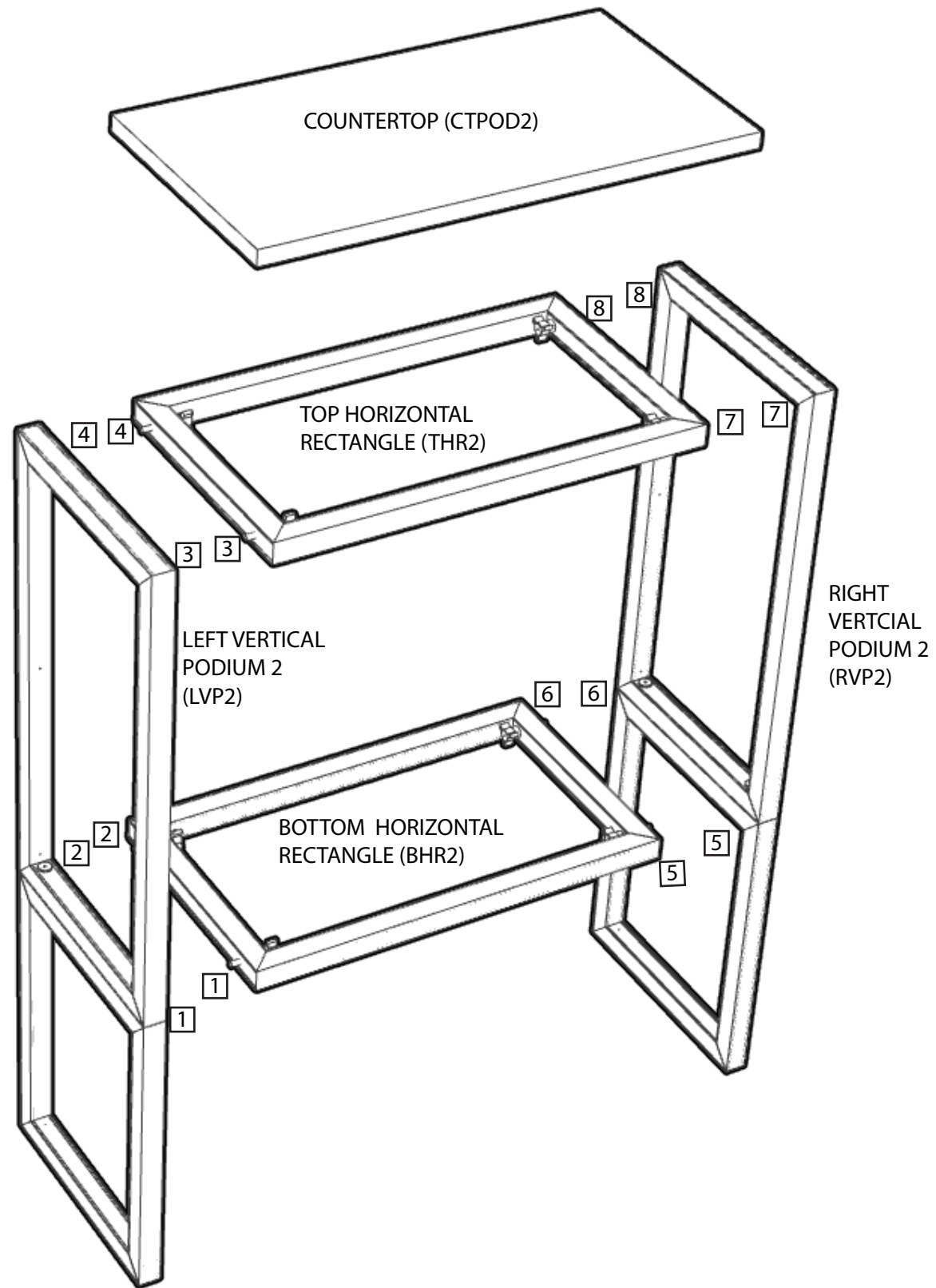
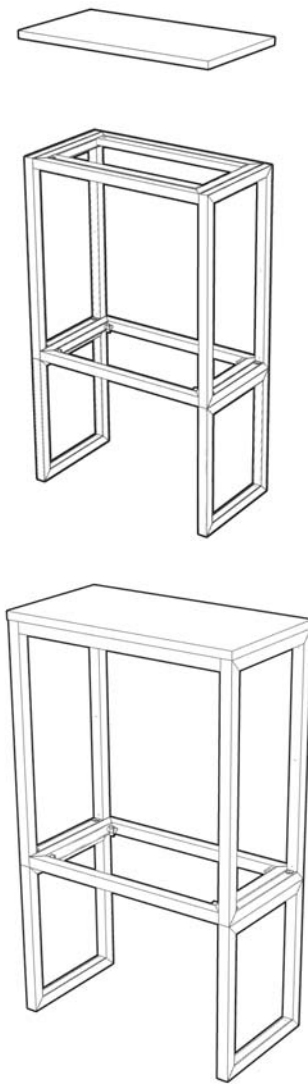
**1st Step)**

START WITH THE (BHR2) ON THE GROUND. ATTACH THE (LVP2), AND (RVP2) THEN ATTACH THE (THR2)



**2nd Step)**

ATTACH THE COUNTERTOP (CTPOD2)



**Expo EX PO Displays**  
A Division of Diamond Displays International

3401 Mary Taylor Road  
Birmingham, Alabama 35235  
(205) 439-8200

Drawn By: NICK

THIS PART USED TO MAKE  
**MQ-POD2**  
1x1 PODIUM 2



Sheet Title

**ASSEMBLY  
INSTRUCTIONS**  
**1x1 STANDARD PODIUM 2  
MQ-POD2**