

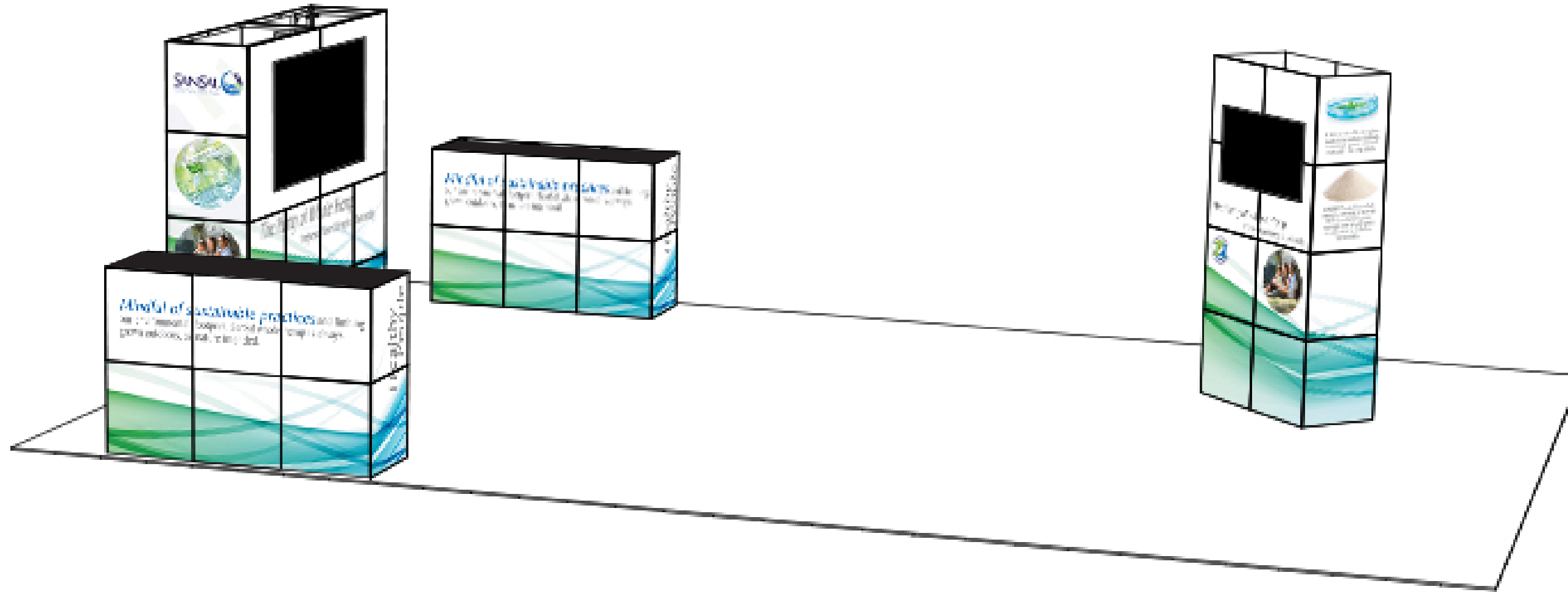
WHEN ASSEMBLING **EX PO MultiQuad**<sup>®</sup>

REMEMBER YOUR **ABC**'s...

**A**SSEMBLE EACH COMPONENT SEPARATELY

**B**UILD THE DESIRED LAYOUT

**C**OVER YOUR MULTIQUAD LAYOUT WITH QUADS



**EX PO MultiQuad**<sup>®</sup>  
An **ExpoDisplays** Product

Ultra Concepts  
20' x 30' Custom MultiQuad<sup>®</sup>



**Expo EX PO Displays**<sup>®</sup>  
A Division of Diamond Displays International

3401 Mary Taylor Road  
Birmingham, Alabama 35235  
(205) 439-8200

Job #: 69436

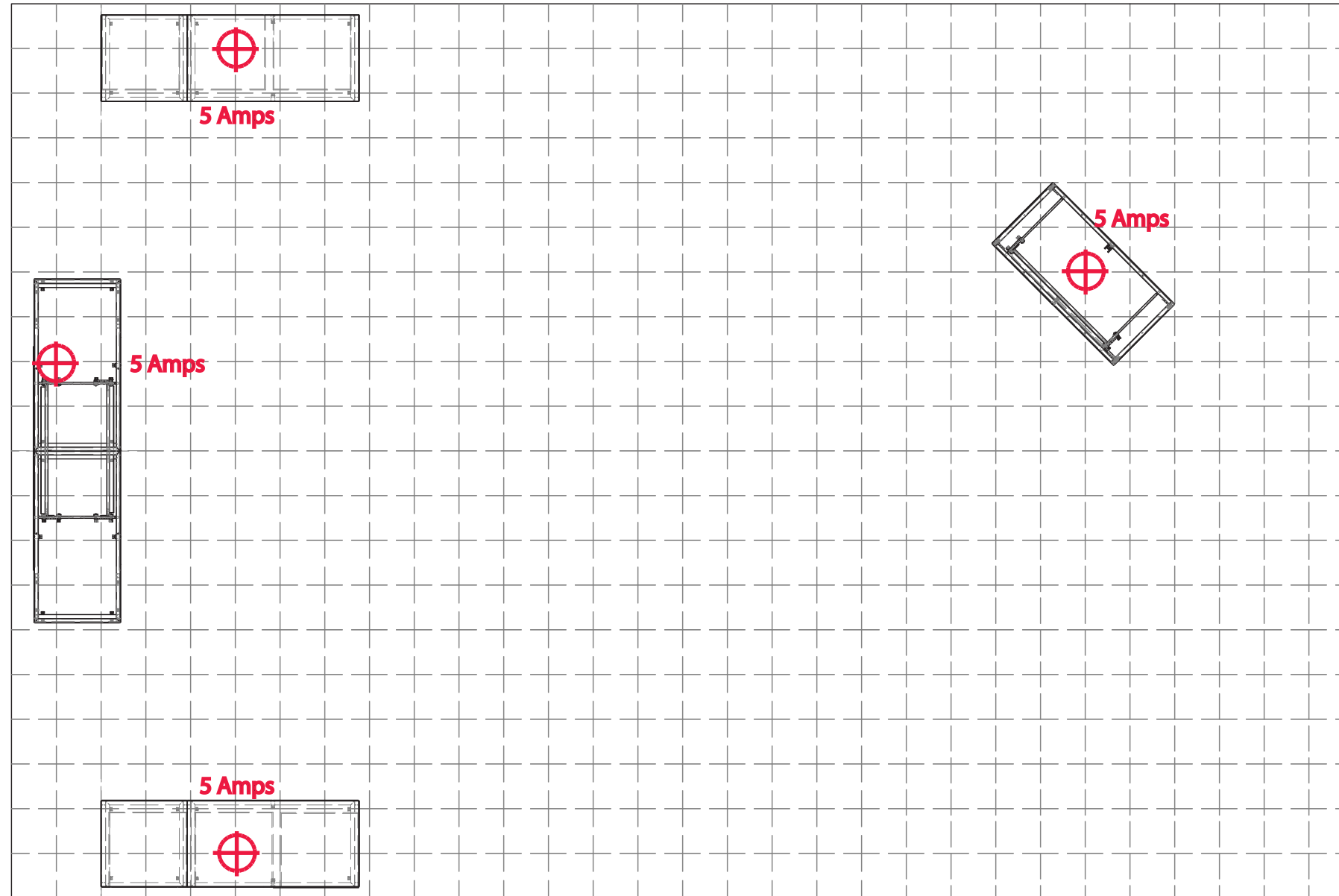
Project Title

20x30 MULTIQUAD<sup>®</sup>

Sheet Title

ASSEMBLY  
INSTRUCTIONS  
COVER SHEET

BOOTH # \_\_\_\_\_ ↗



BOOTH # ↗

BOOTH # ↗

BOOTH # \_\_\_\_\_ ↘

FRONT OF DISPLAY

1 Square = 1'- 0"

	MAIN ELECTRICAL DROP
	ELECTRICAL OUTLET
	POWER CORDS RUN UNDER CARPET

SHOW: \_\_\_\_\_

BOOTH: \_\_\_\_\_



**Expo EX PO Displays**  
A Division of Diamond Displays International

3401 Mary Taylor Road  
Birmingham, Alabama 35235  
(205) 439-8200

Job #: 69436

Project Title

**20x30 MULTIQUAD®**

Sheet Title

**ASSEMBLY INSTRUCTIONS**  
**ELECTRICAL PLAN**

\* ASSEMBLE ALL LISTED FRAMES SEPARATELY  
USING APPENDIX PAGES PROVIDED

\* USE INSTRUCTIONS ON FOLLOWING  
PAGES TO CONSTRUCT SET-UP AS SHOWN  
ON PAGE 2



**Expo EX PO Displays**  
A Division of Diamond Displays International

3401 Mary Taylor Road  
Birmingham, Alabama 35235  
(205) 439-8200

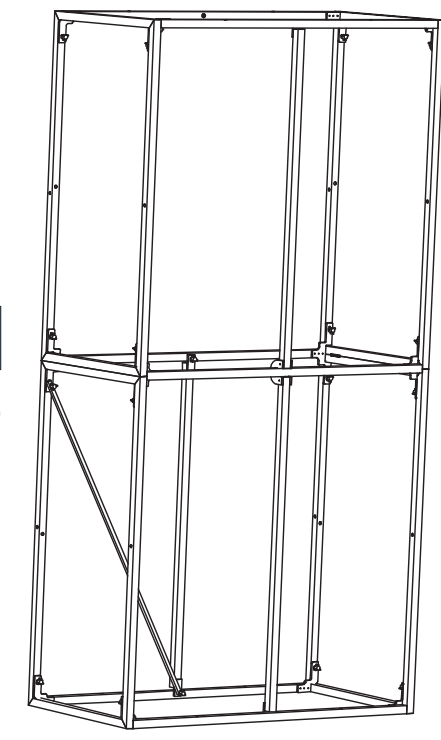
Job #: 69436

Project Title

20x30 MULTIQUAD®

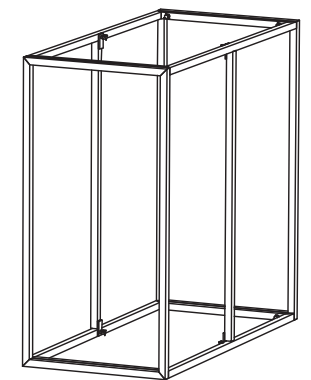
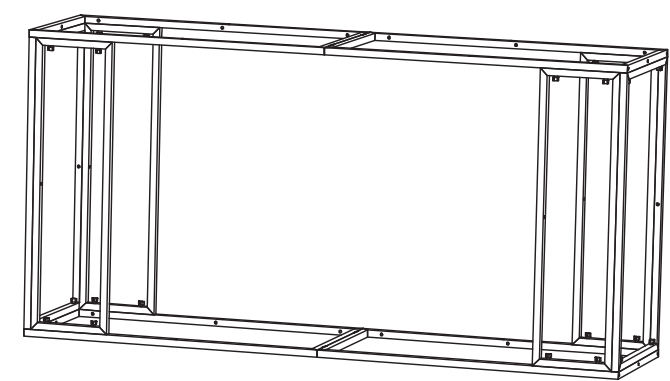
Sheet Title

ASSEMBLY  
INSTRUCTIONS  
EXPLODED LAYOUT

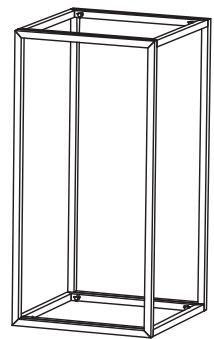


THIS PART USED TO MAKE  
**MQX-F24**  
2x4 MAX FRAME  
MAX FRAME  
(SEE APPENDIX J6)

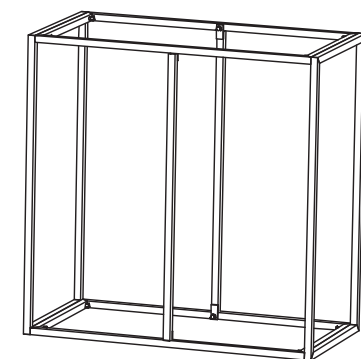
MAX FRAME  
(SEE APPENDIX BB)  
THIS PART USED TO MAKE  
**MQX-F42**  
4x2 MAX FRAME



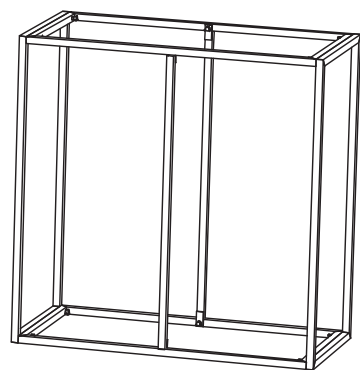
THIS PART USED TO MAKE  
**MQX-F22**  
2x2 MAX FRAME  
MAX FRAME  
(SEE APPENDIX L)



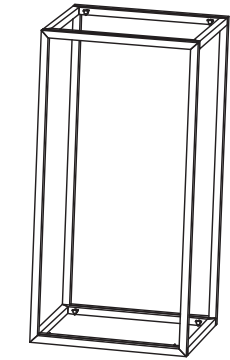
THIS PART USED TO MAKE  
**MQX-F12**  
1x2 MAX FRAME  
MAX FRAME  
(SEE APPENDIX V)



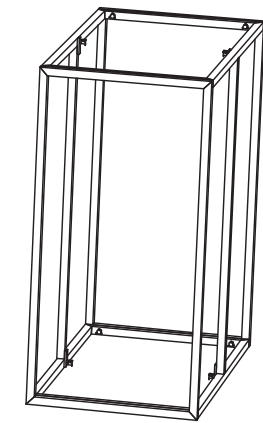
THIS PART USED TO MAKE  
**MQX-F22**  
2x2 MAX FRAME  
MAX FRAME  
(SEE APPENDIX L)



THIS PART USED TO MAKE  
**MQX-F22**  
2x2 MAX FRAME  
MAX FRAME  
(SEE APPENDIX L)



THIS PART USED TO MAKE  
**MQX-F12**  
1x2 MAX FRAME  
MAX FRAME  
(SEE APPENDIX V)



THIS PART USED TO MAKE  
**MQX-F22**  
2x2 MAX FRAME  
MAX FRAME  
(SEE APPENDIX L)

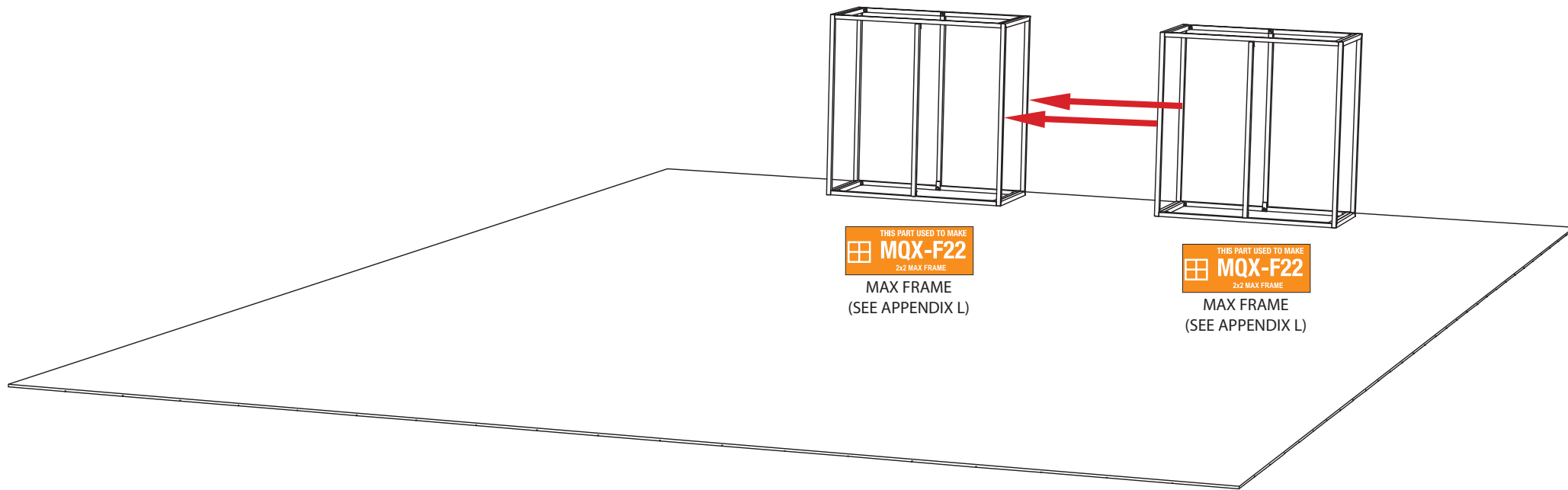


Project Title

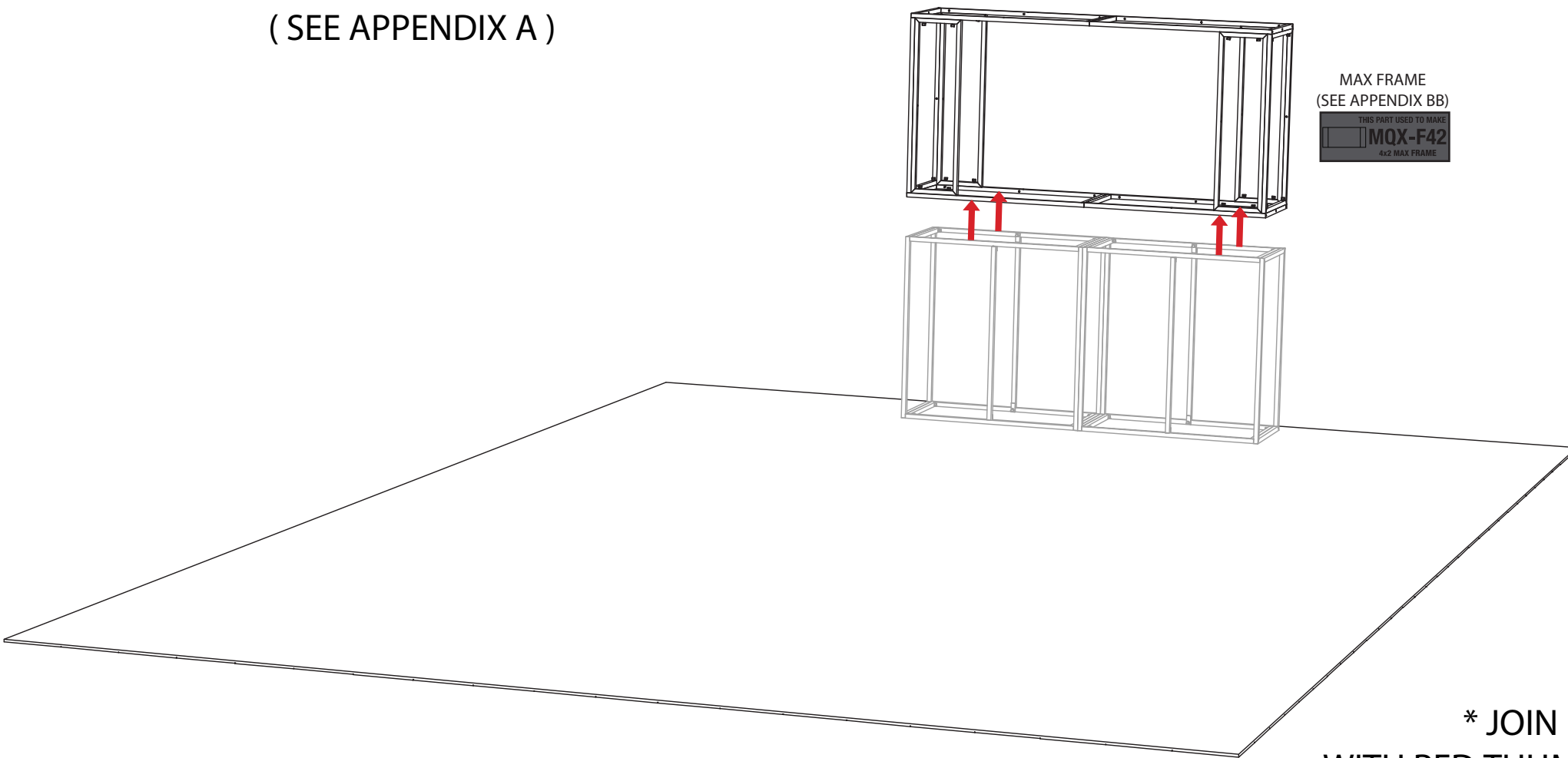
20x30 MULTIQUAD®

Sheet Title

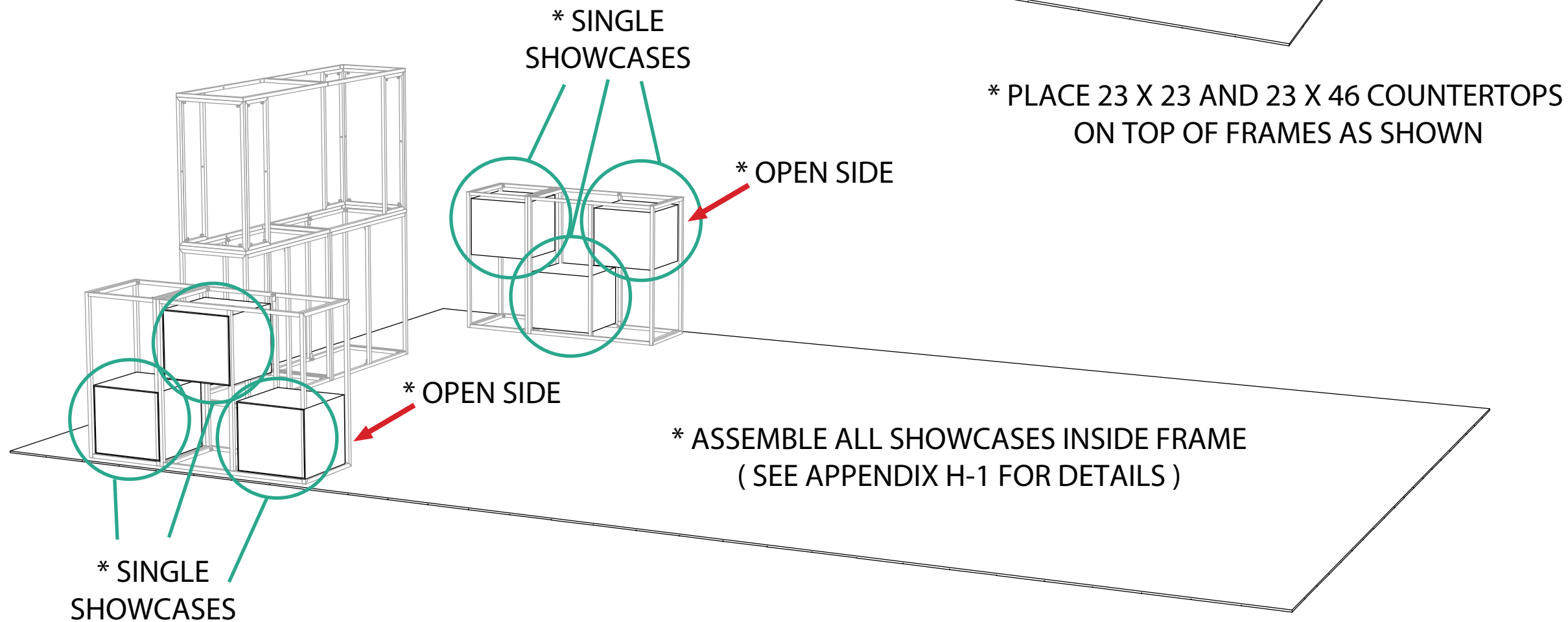
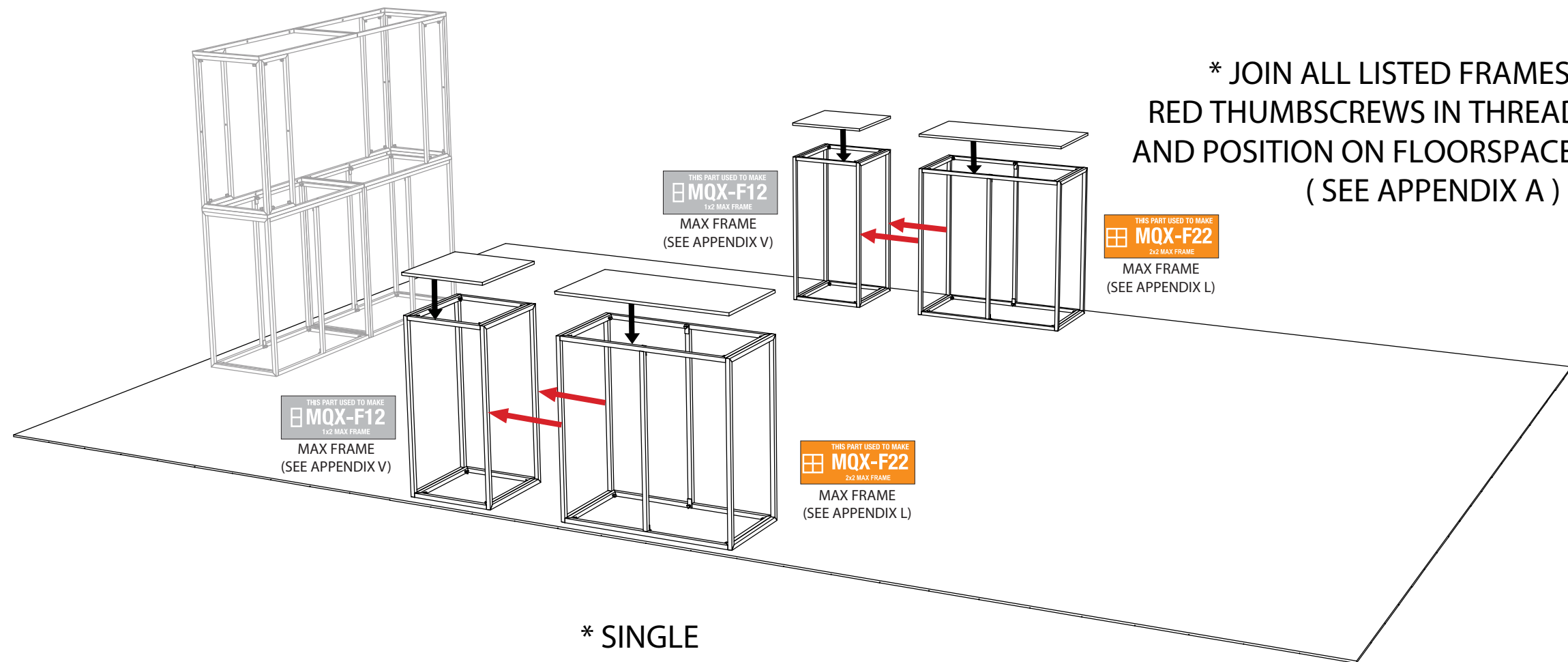
ASSEMBLY INSTRUCTIONS  
LARGE TV TOWER ASSEMBLY



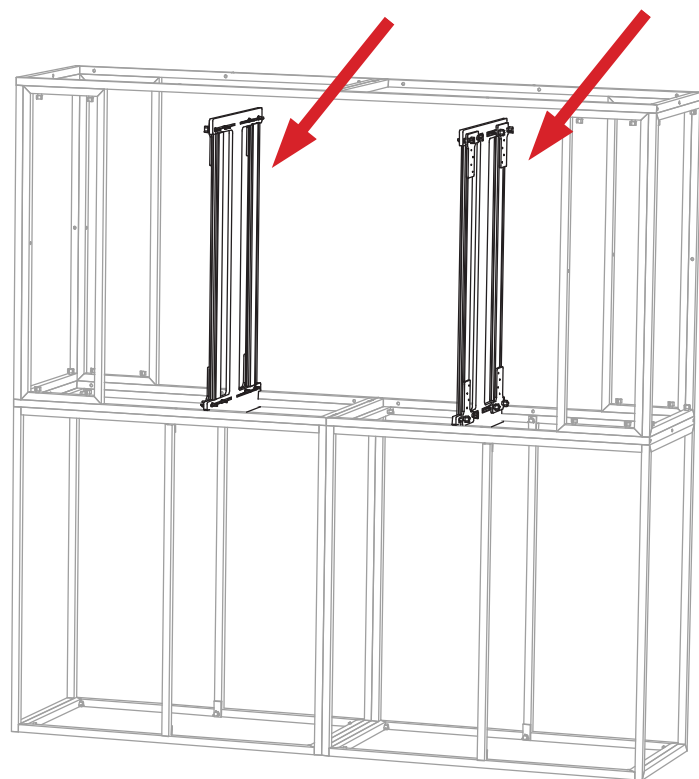
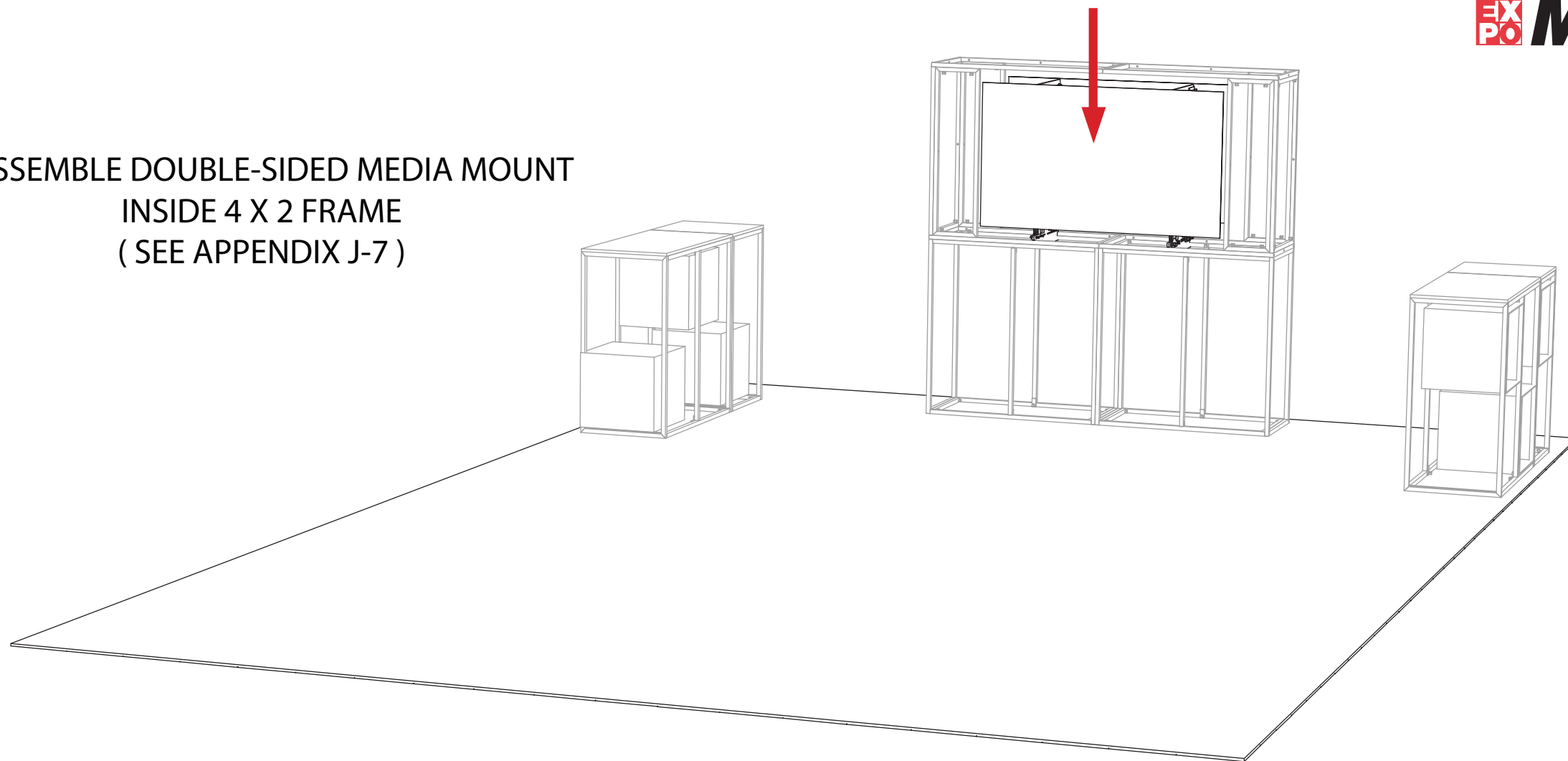
\* JOIN ALL LISTED FRAMES WITH RED THUMBSCREWS IN THREADED HOLES AND POSITION ON LEFT SIDE OF FLOORSPACE (SEE APPENDIX A)



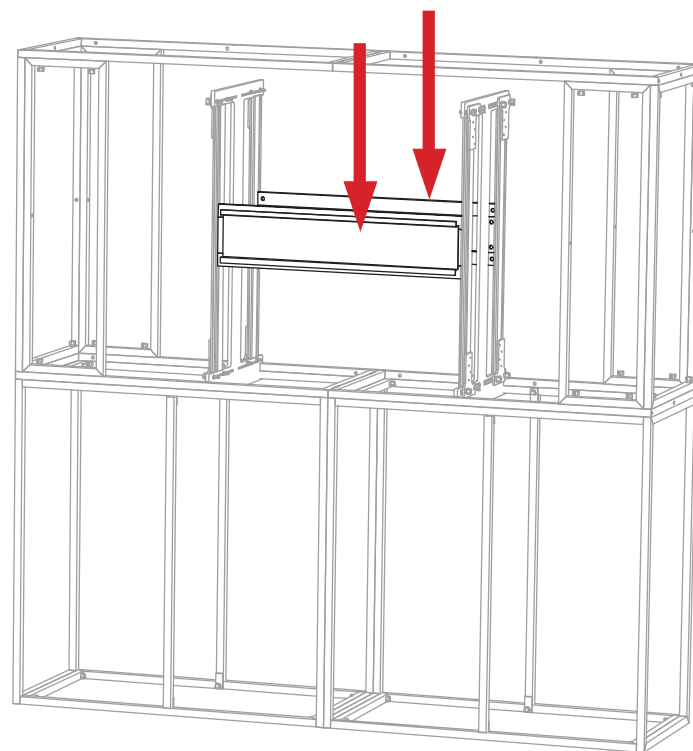
\* JOIN LISTED FRAME ON TOP WITH RED THUMBSCREWS IN THREADED HOLES (SEE APPENDIX A)



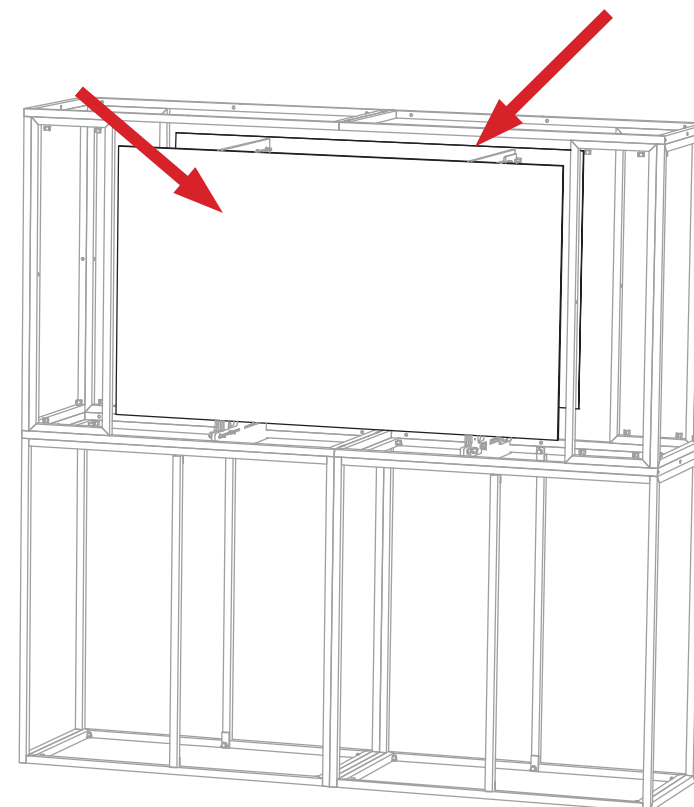
\* ASSEMBLE DOUBLE-SIDED MEDIA MOUNT  
INSIDE 4 X 2 FRAME  
(SEE APPENDIX J-7)



\* POSITION ARMS ON EITHER SIDE  
OF FRAME AS SHOWN



\* INSERT MOUNTING BRACKET  
ON BOTH SIDES OF FRAME



\* HANG 55" TV ON EACH SIDE OF MOUNT



**Expo EX PO Displays**  
A Division of Diamond Displays International

3401 Mary Taylor Road  
Birmingham, Alabama 35235  
(205) 439-8200

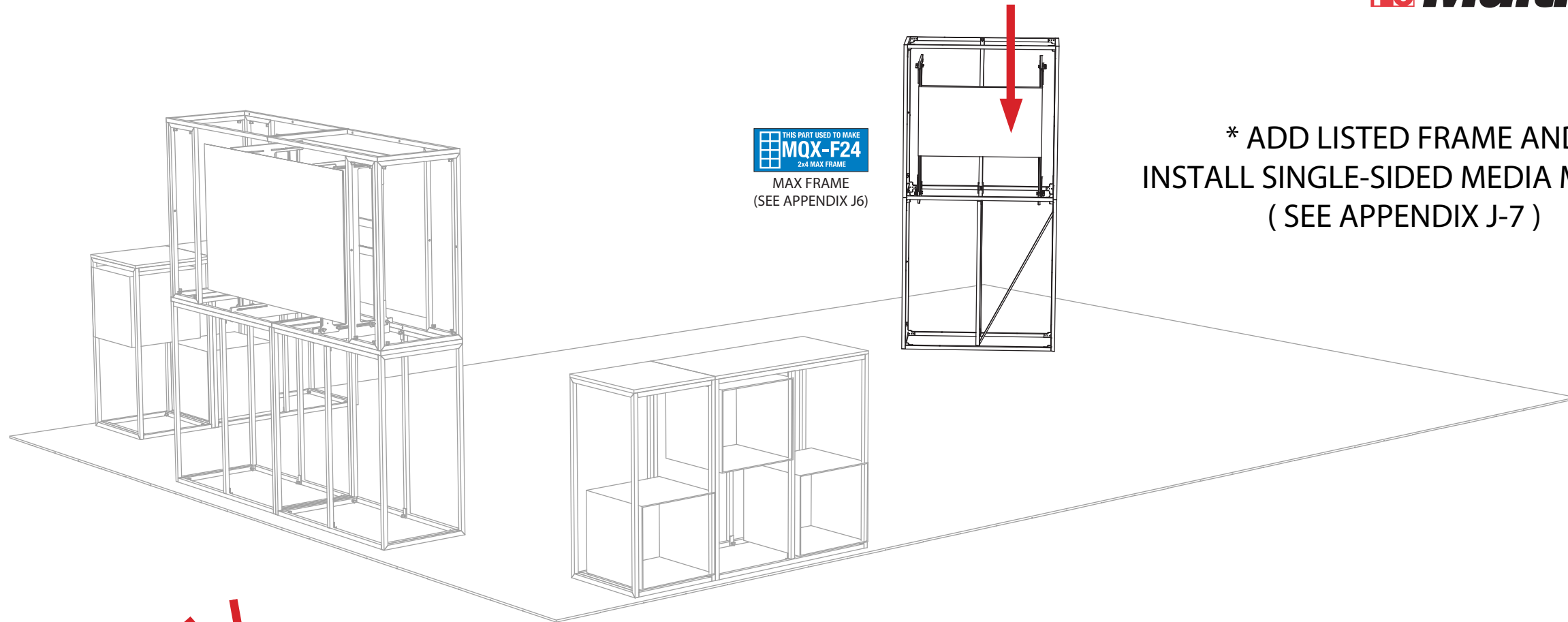
Job #: 69436

Project Title

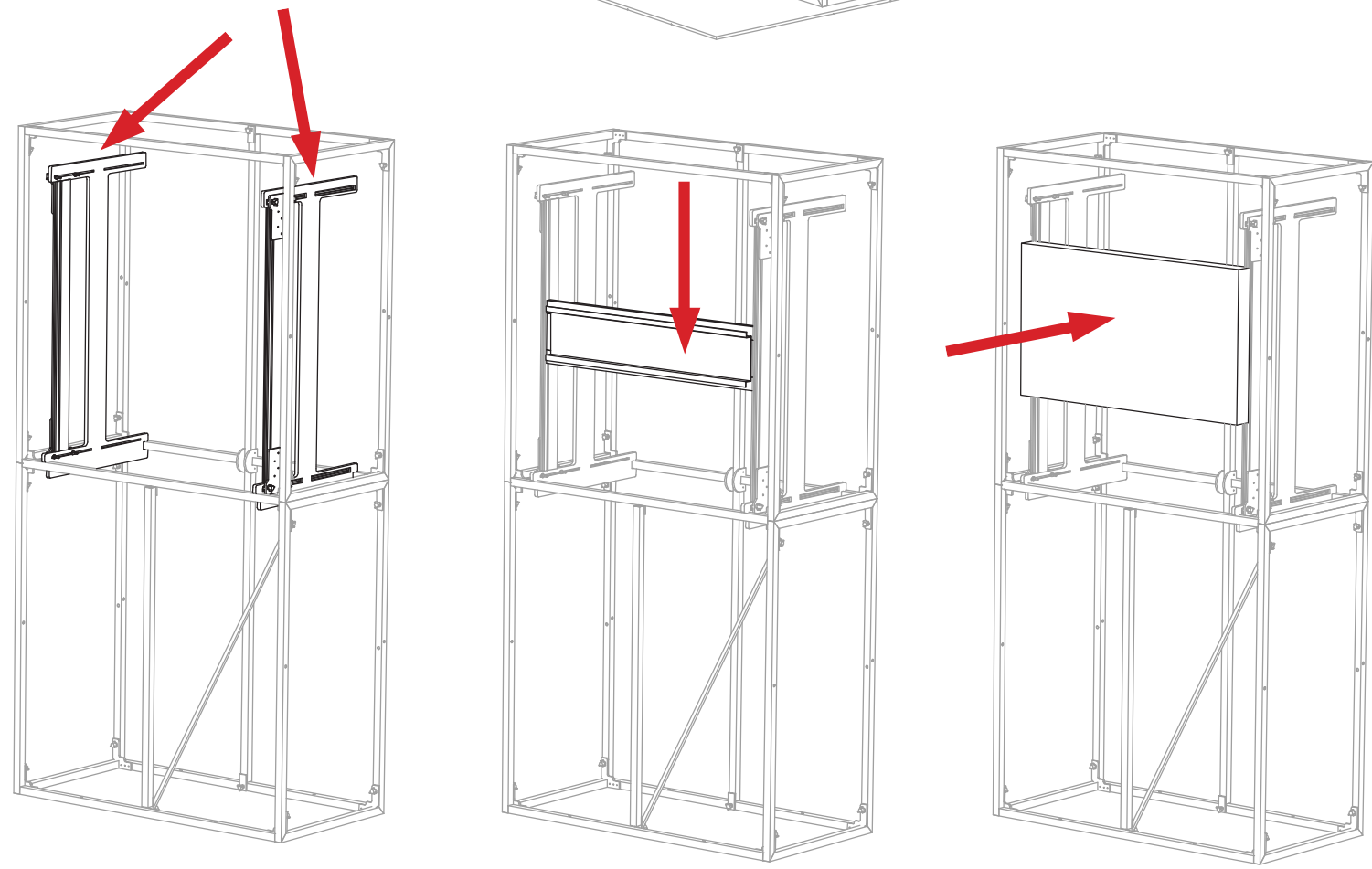
20x30 MULTIQUAD®

Sheet Title

**ASSEMBLY  
INSTRUCTIONS  
DOUBLE-SIDED  
MOUNT**



\* ADD LISTED FRAME AND  
INSTALL SINGLE-SIDED MEDIA MOUNT  
( SEE APPENDIX J-7 )



\* POSITION ARMS ON EITHER SIDE  
OF FRAME AS SHOWN

\* INSERT MOUNTING BRACKET  
BETWEEN ARMS INSIDE FRAME

\* HANG 42" TV ON MOUNT



**Expo EX PO Displays**  
A Division of Diamond Displays International

3401 Mary Taylor Road  
Birmingham, Alabama 35235  
(205) 439-8200

Job #: 69436

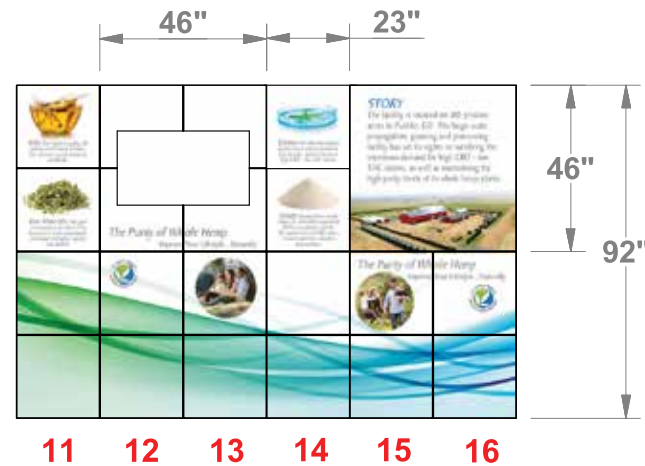
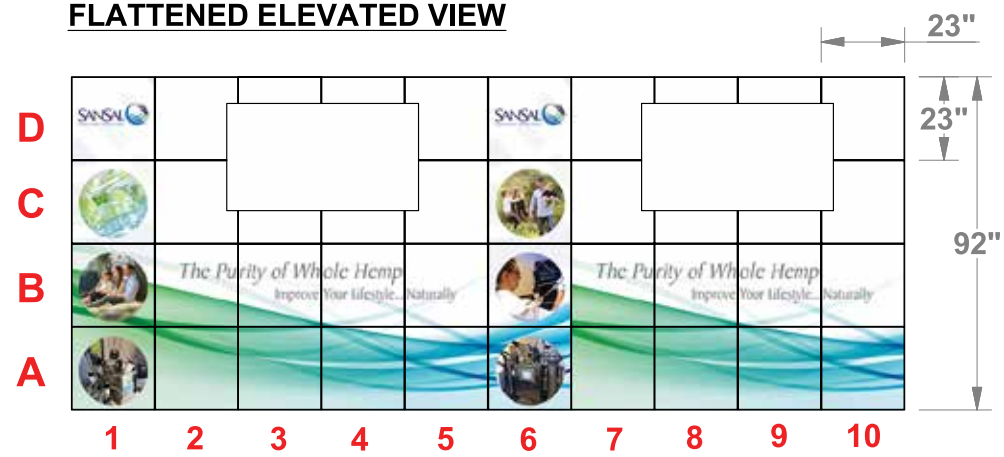
Project Title

20x30 MULTIQUAD®

Sheet Title

**ASSEMBLY  
INSTRUCTIONS  
SMALLER TV TOWER  
ASSEMBLY**

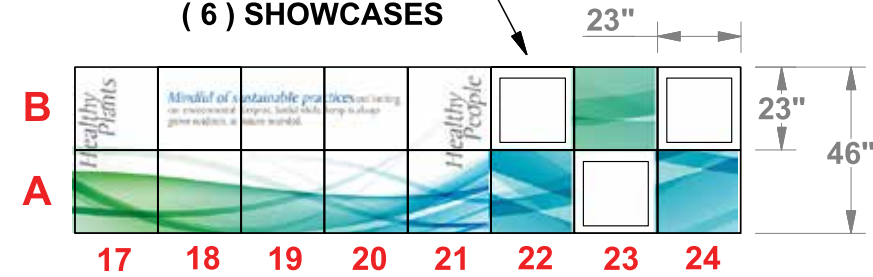
**FLATTENED ELEVATED VIEW**



3401 Mary Taylor Road  
Birmingham, Alabama 35235  
(205) 439-8200

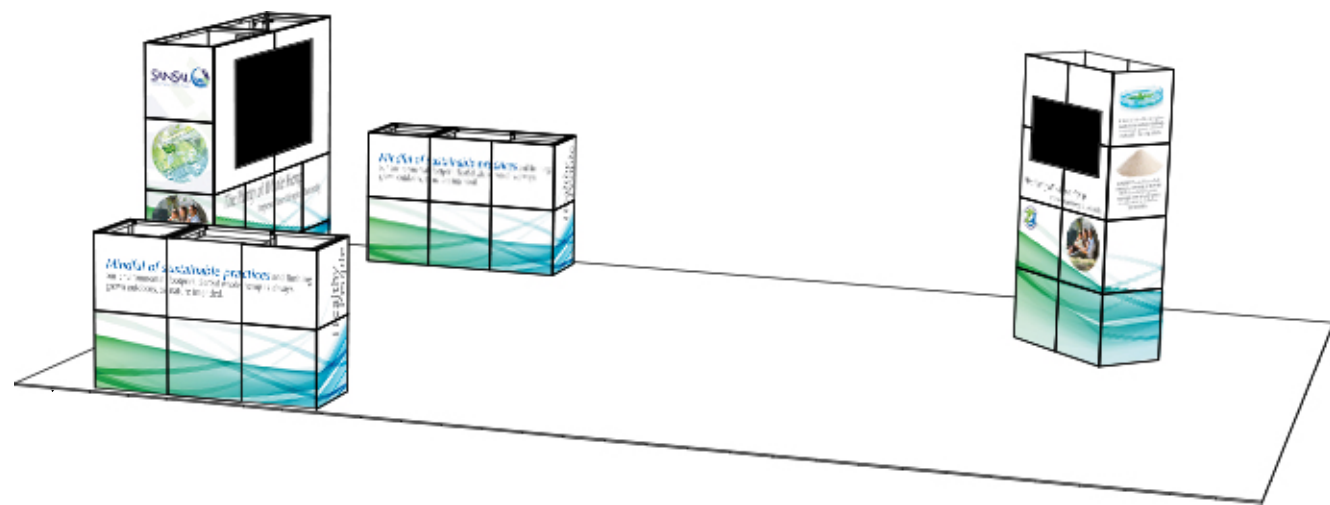
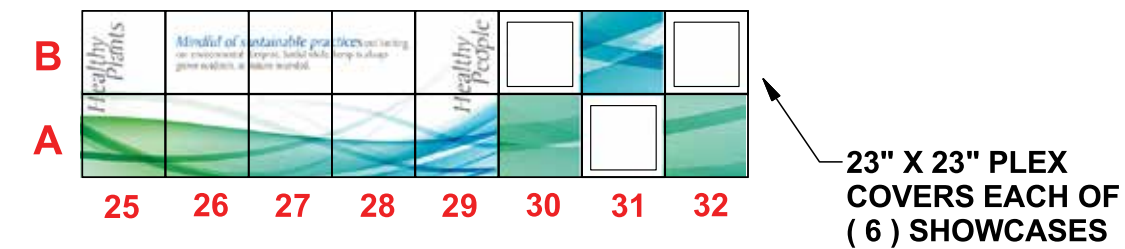
Job #: 69436

**23" X 23" PLEX  
COVERS EACH OF  
( 6 ) SHOWCASES**

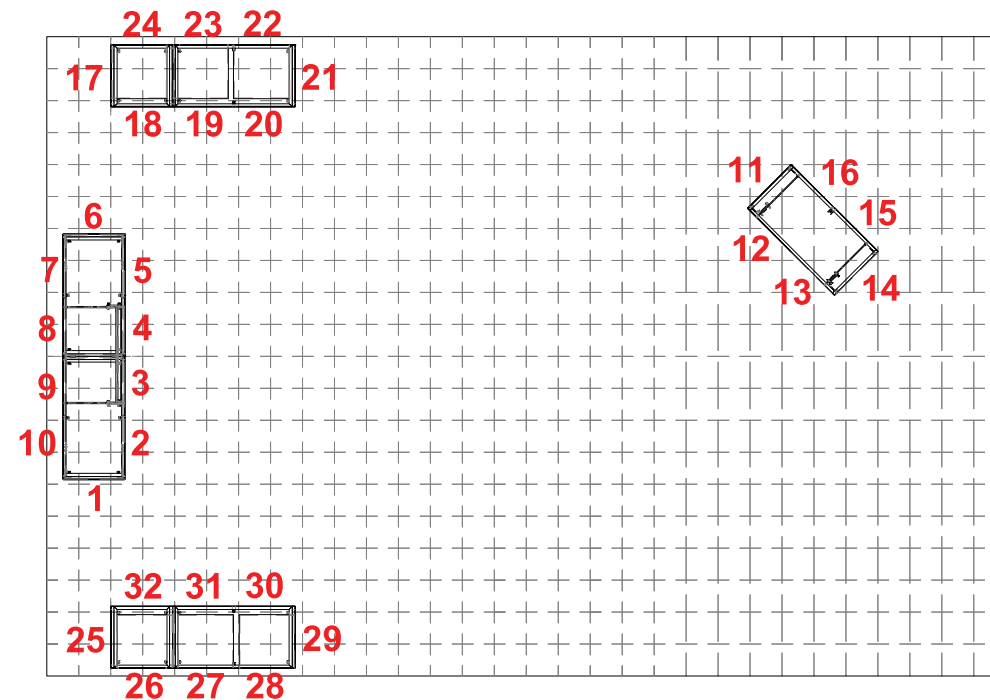


**PARTS LIST:**

#	SIZE	NAME
66	23x23	STANDARD QUAD
6	23X23	SHOWCASE QUAD
1	46x46	JUMBO QUAD
2	23x46	VERTICAL DOUBLE HNG QUADS



**PERSPECTIVE VIEW**



**TOP VIEW**

Project Title

**20x30 MULTIQUAD®**

Sheet Title

**ASSEMBLY  
INSTRUCTIONS  
GRAPHIC LAYOUT**





**LARGE TV TOWER**



**SMALLER TV TOWER**

Project Title

**20x30 MULTIQUAD®**

Sheet Title

**ASSEMBLY INSTRUCTIONS**  
**REFERENCE PHOTOS**

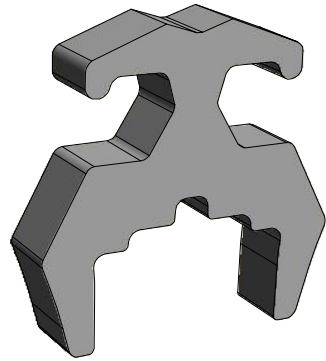


**SHOWCASE 30-32**

**SHOWCASE 22-24**

**FRAME CLAMP INSTRUCTION  
MQ-CLMP**

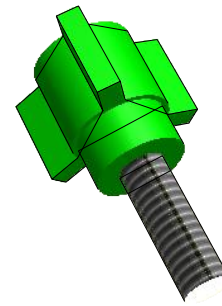
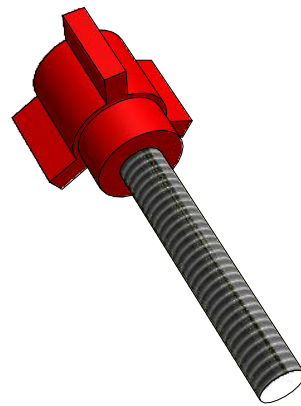
**(NOT REQUIRED IN EVERY CONFIGURATION)**



THE MQ-CLMP IS A FRICTION-FIT CONNECTOR / ALIGNMENT TOOL THAT DOES NOT REQUIRE TOOLS. THEY ARE TO BE USED IN ABNORMAL MULTIQUAD FRAME CONFIGURATIONS OR AS ADDITIONAL FRAME SECURITY IN SPECIAL SITUATIONS



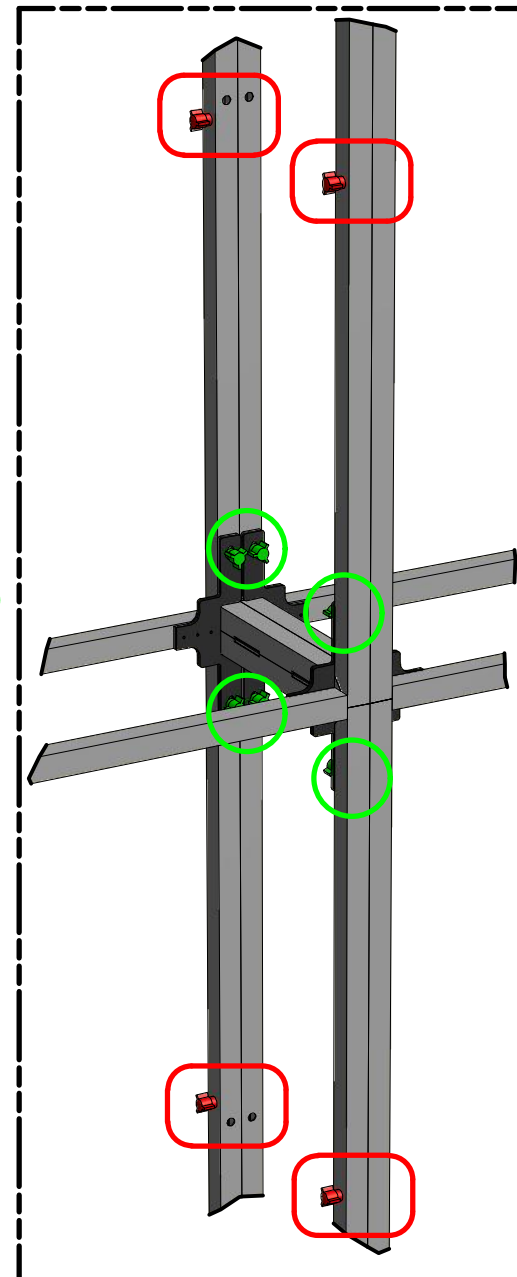
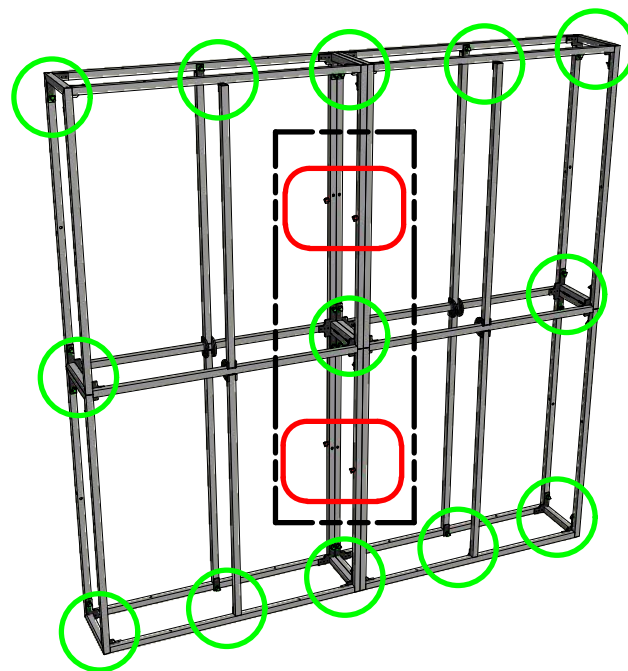
**THUMB SCREW INSTRUCTION  
MQ-TSR2 / MQ-TSG1**



THE 2" RED THUMB SCREW IS USED TO CONNECT MULTIQUAD FRAMES TO OTHER MULTIQUAD FRAMES. EACH FRAME HAS RIVET NUT ON ONE SIDE AND A HOLE ON THE OTHER TO ALLOW FRAME TO FRAME CONNECTION

THE 1" GREEN THUMB SCREWS ARE USED WHEN ASSEMBLING 1x4 AND 2x4 FRAMES. SEE APPENDIX PAGES

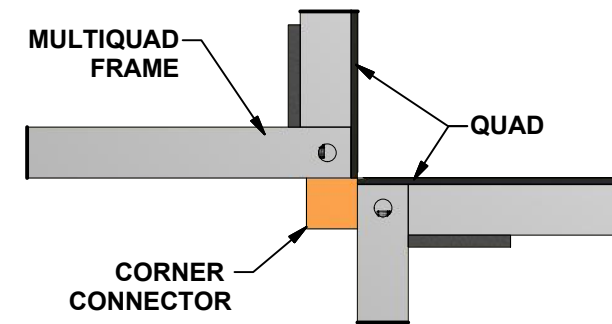
**DUE TO THE RIVET NUTS, ALL FRAMES HAVE A LEFT AND RIGHT SIDE. VERIFY FRAME ORIENTATION TO ALLOW FRAME TO FRAME CONNECTION**



**CORNER CONNECTOR INSTRUCTION  
MQ-BTW**

**(NOT REQUIRED IN EVERY CONFIGURATION)**

THE MQ-BTW CORNER ALIGNMENT TOOL IS DESIGNED TO AID IN THE ALIGNMENT OF FRAMES AS NEEDED IN SOME MULTIQUAD CONFIGURATIONS.



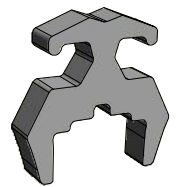
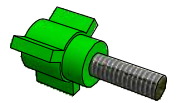
AFTER TWO MULTIQUAD FRAMES ARE SET "CORNER-TO-CORNER" THE MQ-BTW SIMPLY ATTACHES TO THE EXISTING MAGNETS ON THE FRAME



**Expo Displays**

3401 Mary Taylor Road  
Birmingham, Alabama 35235  
(205) 439-8200

Drawn By: AKHIII



**ASSEMBLY  
INSTRUCTIONS**

CONNECTORS & ALIGNMENT TOOLS

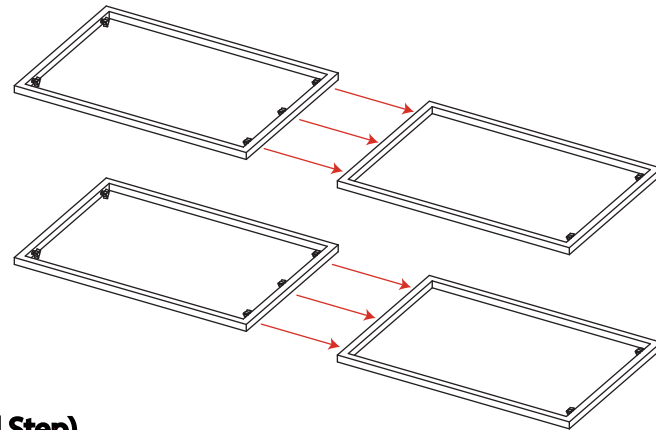
**APPENDIX A**

**PARTS LIST:**

#	LABEL	NAME
1	LVRX1	LEFT VERTICAL RECTANGLE
1	RVRX1	RIGHT VERTICAL RECTANGLE
1	BHRX2	BOTTOM HORIZONTAL RECT.
1	THRX2	TOP HORIZONTAL RECTANGLE
4	THR1	VERTIVCAL RECTANGLE
24	RED	2" THUMB SCREWS

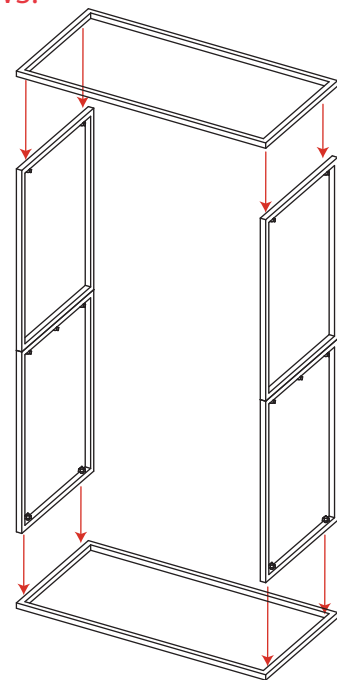
**1st Step)**

CONNECT THE TWO (2) THRX2 AND THE TWO (2) BHRX2 USING THE RED THUMB SCREWS.



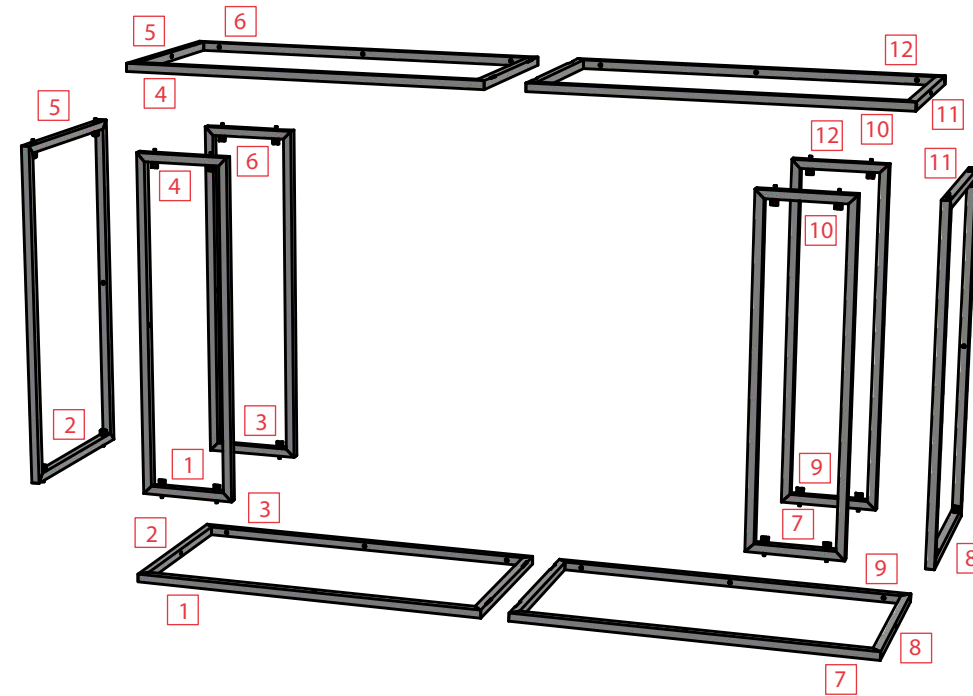
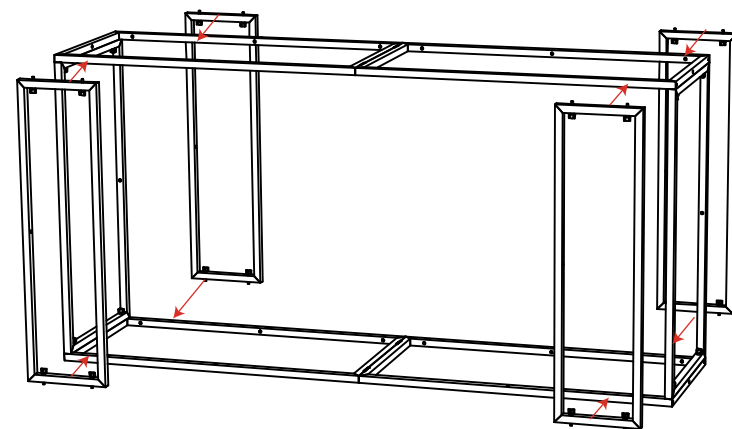
**2nd Step)**

PLACE THE LVRX1 ON THE GROUND AND CONNECT THE THRX2 AND BHRX2 FROM STEP 1 USING THE RED THUMB SCREWS.

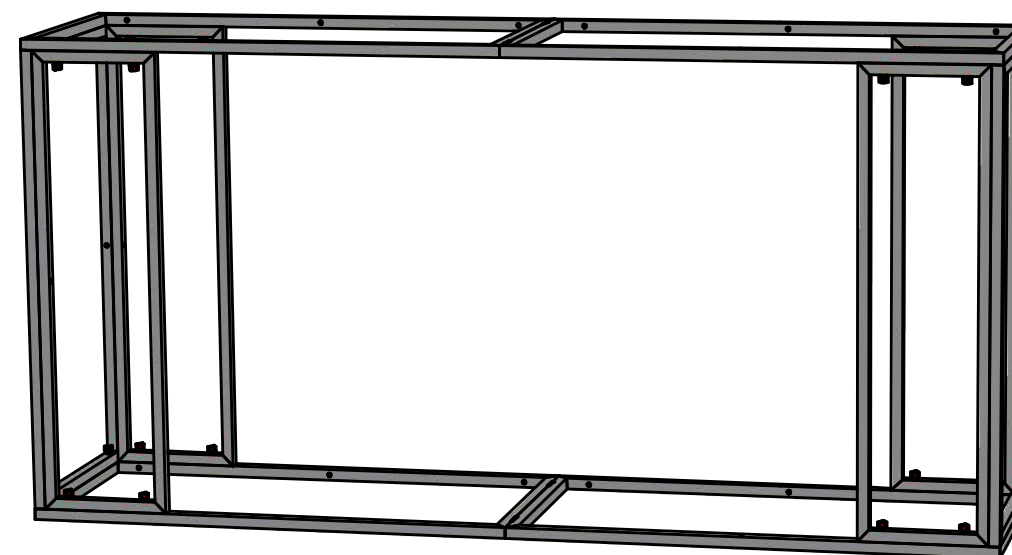


**3rd Step)**

ATTACH THE FOUR (4) THR1-BHR1 PIECES USING THE RED THUMB SCREWS.



\*MATCH NUMBERS TO CONSTRUCT.



ASSEMBLED VIEW



**Expo EX PO Displays**  
A Division of Diamond Displays International

3401 Mary Taylor Road  
Birmingham, Alabama 35235  
(205) 439-8200

Drawn By: SH



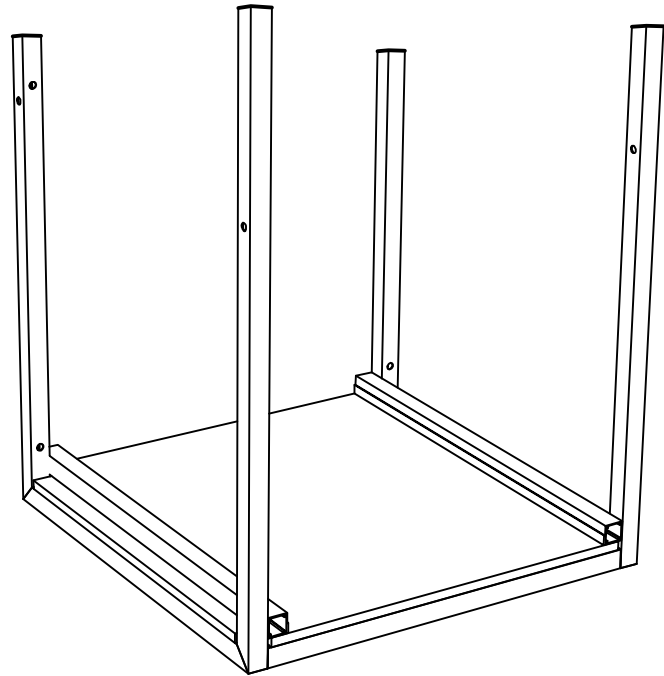
Sheet Title

**ASSEMBLY  
INSTRUCTIONS**  
**4x2 MAX FRAME  
MQX- F42**

APPENDIX BB

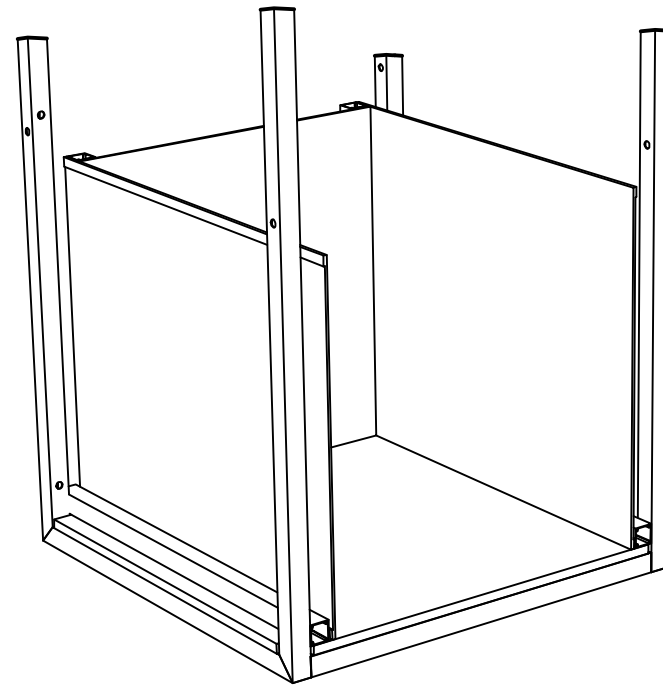
**1st Step)**

**START WITH PLACING SHELF IN PROPER LOCATION OF MULTIQUAD FRAMING.**



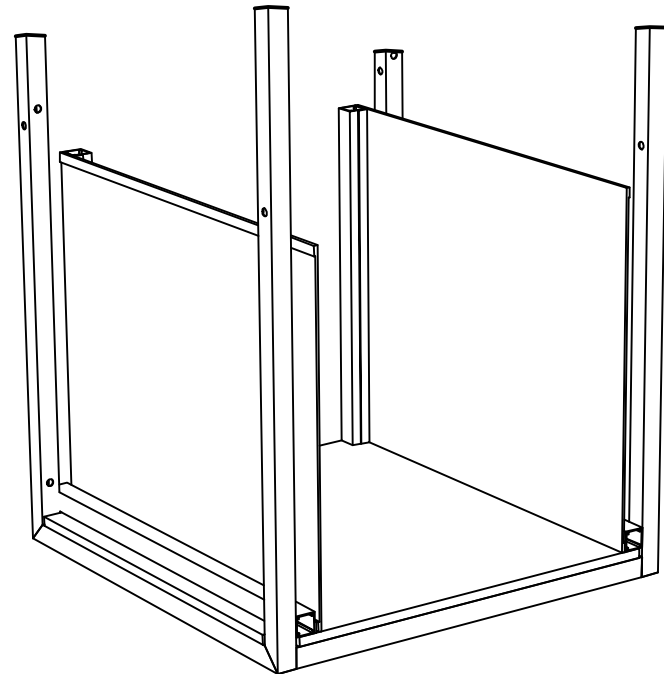
**3rd Step)**

**CONNECT BACK PANEL (PDK-BACK) TO BARS ON SIDE PANELS APPLIED IN STEP 2. BACK PANEL ATTACHES WITH MAGNET.**



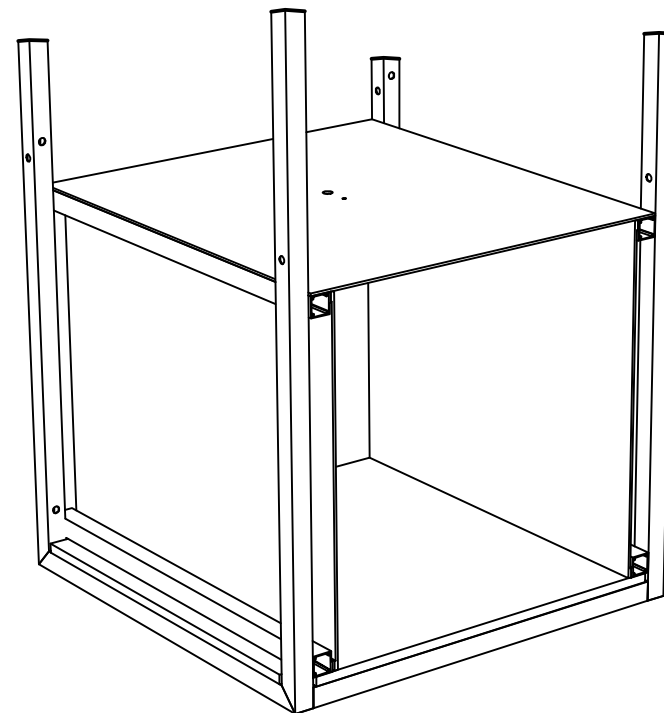
**2nd Step)**

**ATTACH 2 SIDE PANELS (PDK1-SIDE) TO SHELF BARS. PANELS ATTACH USING MAGNETS.**



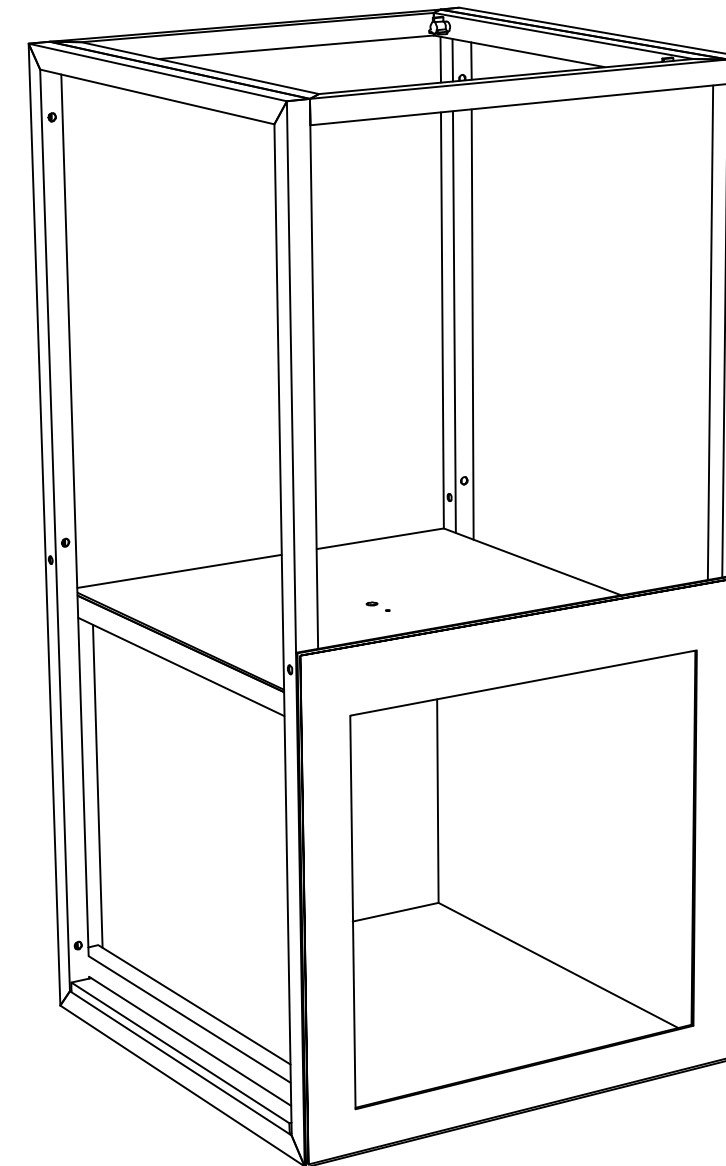
**4th Step)**

**ATTACH TOP PANEL WITH LIGHT TO SIDE PANELS. TOP PANEL ATTACHES WITH MAGNET. RUN ELECTRICAL WIRING DOWN THROUGH SHELF.**



**5th Step)**

**BE SURE TO CONSTRUCT ALL DISPLAY CASES PRIOR TO APPLYING GRAPHIC QUADS. ONCE ALL DISPLAY CASES ARE ASSEMBLED IN PROPER LOCATION, REFER TO GRAPHIC LAYOUT AND APPLY GRAPHIC QUADS.**



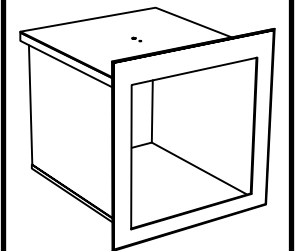
PARTS LIST - PDK1		
QNTY	LABEL	NAME
1	SHELF	LAMINATED SHELF
2	PDK1-SIDE	SIDE PANEL
1	PDK1-BACK	BACK PANEL
1	PDK-1 TOP	TOP PANEL WITH LIGHT



**Expo Displays**

3401 Mary Taylor Road  
Birmingham, Alabama 35235  
(205) 439-8200

Drawn By: JW



**ASSEMBLY INSTRUCTIONS**

PDK1  
1-OPEN SIDE PRODUCT DISPLAY CASE

APPENDIX H1

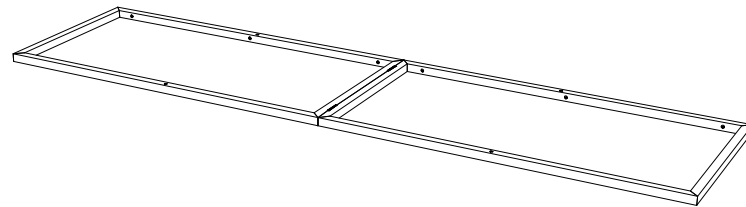
PARTS LIST		
QNTY	LABEL	NAME
1	LVHX	LEFT VERTICAL HINGED MAX
1	RVHX	RIGHT VERTICAL HINGED MAX
2	BH1	BOTTOM HORIZONTAL BAR
2	TH1	TOP HORIZONTAL BAR
2	MH1	MIDDLE HORIZONTAL BAR
1	CVH1	CENTER VERTICAL HINGED BAR
1	CVH2	CENTER VERTICAL HALF
20	GRN	1" GREEN THUMB SCREW
1	MQX-MM1	MAX MEDIA MOUNT

**NOTE:**

REFER TO APPENDIX J FOR BASIC MQX-F24 FRAME ASSEMBLY AND APPENDIX J7 FOR MAX MEDIA MOUNT ASSEMBLY

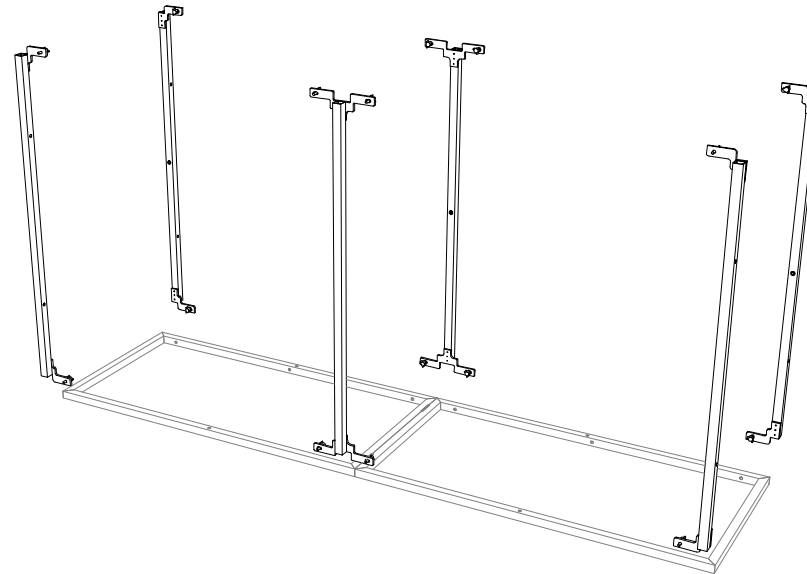
**1st Step)**

START WITH THE LEFT VERTICAL (LVHX) ON THE GROUND



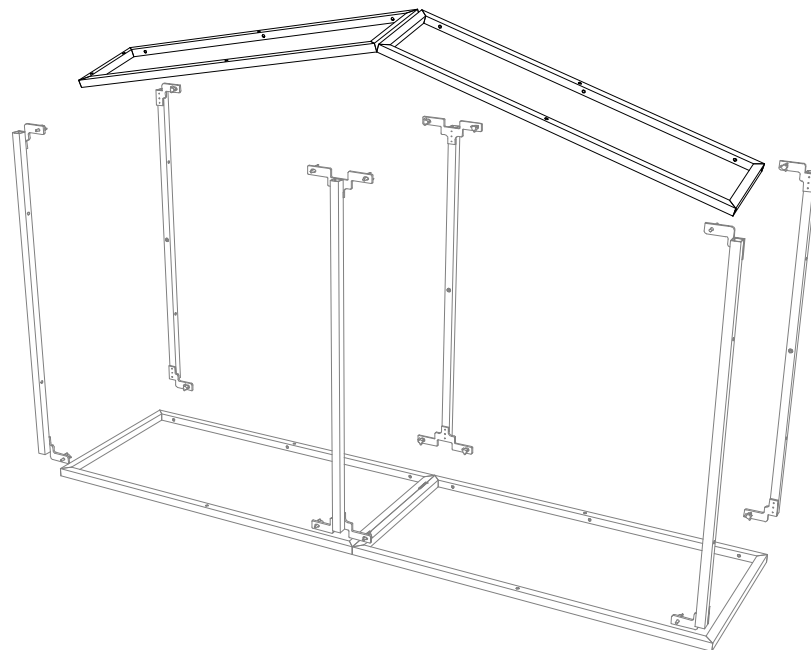
**2nd Step)**

ATTACH THE (2) TOP HORIZONTAL (TH1), THE (2) MIDDLE HORIZONTAL (MH1), AND THE (2) BOTTOM HORIZONTAL (BH1)



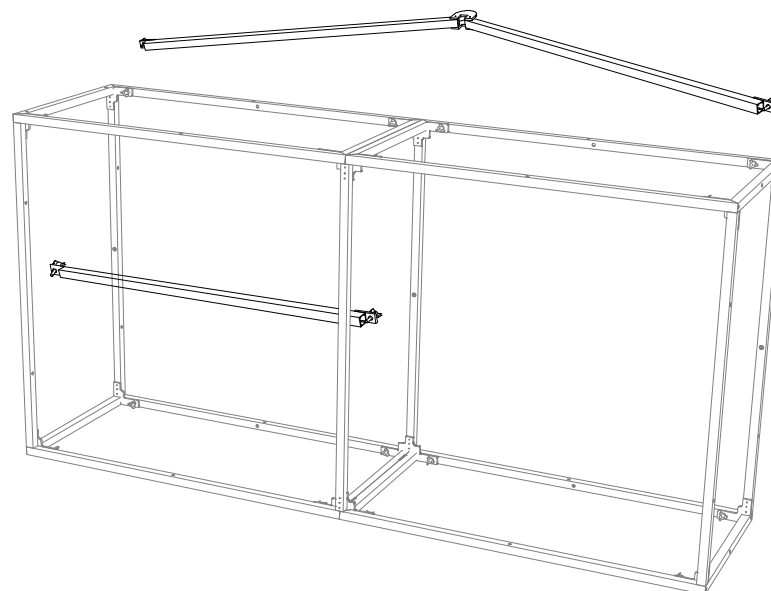
**3rd Step)**

ATTACH THE RIGHT HINGED SIDE (RVH1)



**4th Step)**

ATTACH THE (1) CENTER VERTICAL HINGED (CVH1) TO BACK OF FRAME, AND (1) CENTER VERTICAL (CVH2) TO BOTTOM-FRONT OF FRAME, AND STAND UP-RIGHT



\*MATCH NUMBERS TO CONSTRUCT



Expo Displays

3401 Mary Taylor Road  
Birmingham, Alabama 35235  
(205) 439-8200

Drawn By: JW



ASSEMBLY INSTRUCTIONS

MQX-F24 WITH MAX MEDIA MOUNT

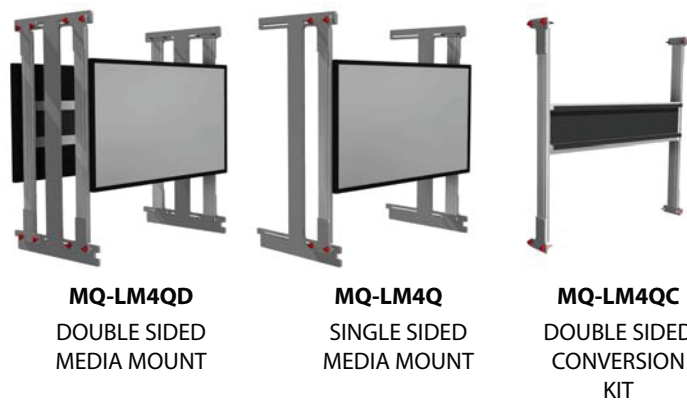
APPENDIX J6

## PARTS LIST:

#	LABEL	NAME
1	MQ-LM4QD	MAX MEDIA MOUNT

### 1st Step)

THIS SET OF ASSEMBLY INSTRUCTIONS FOCUSES ON THE DOUBLE SIDED MOUNT (MQ-LM4QD). THE SAME PROCEDURES APPLY WHEN SETTING UP THE SINGLE SIDED (MQ-LM4Q) AND THE DOUBLE SIDED CONVERSION KIT (MQ-LM4QC)



THESE MOUNTS ARE COMPATIBLE WITH MQX-F24 MULTIQUAD® FRAMES.

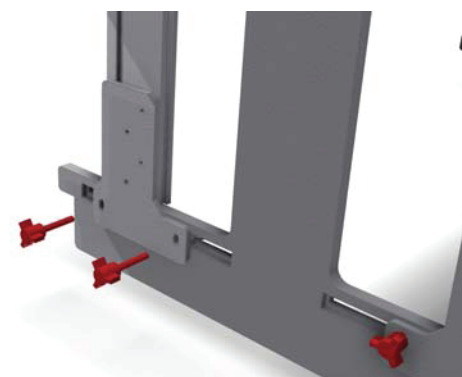


### 2nd Step)

AN M10 HEX KEY WILL BE INCLUDED WITH THE MOUNT THAT WILL BE USED TO FASTEN THE EXTRUSIONS TOGETHER.

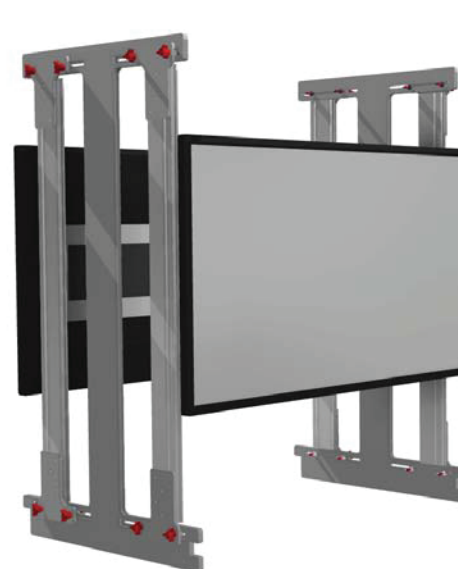


USE THE M10 HEX KEY TO TIGHTEN THE LOCKS THAT ATTACH THE VESA TV MOUNT TO THE ARMS.



ATTACH THE ASSEMBLED ARMS TO THE "I" SHAPED CENTER VERTICAL SUPPORT USING THE PROVIDED RED THUMBSCREWS AND WING NUTS.

**NOTE:** EXPDISPLAYS® WILL OFTEN ADD ARROWS ON THE EXTRUSIONS TO INDICATE THE IDEAL LOCATION OF THE MONITORS. SIMPLY CONNECT THE ARROWS.



### 5th Step)

GENTLY TILT THE UNIT'S FRONT ONTO THE FRONT OF THE FRAME. THE MOUNT IS NOW SECURE INSIDE THE FRAME.



**EXPO MultiQuad**  
An ExpoDisplays Product

### 4th Step)

LINE THE MONITOR'S CENTER WITHIN THE CENTER OF THE FRAME. THEN GENTLY HOOK THE UNIT'S BACK ONTO THE FRAME



THE "I" SHAPED CENTER HOOKS ONTO THE BACK OF THE MQXF24 FRAME.



**Expo Displays**  
A Division of Diamond Displays International

3401 Mary Taylor Road  
Birmingham, Alabama 35235  
(205) 439-8200

Drawn By: NRIMSAND



Sheet Title

**ASSEMBLY INSTRUCTIONS**  
**MAX MEDIA MOUNT**

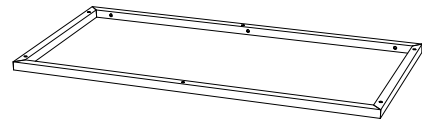
APPENDIX J7

ONCE SECURE THE MEDIA MOUNT IS READY TO HOLD YOUR 42" LCD OR PLASMA DISPLAY.

PARTS LIST		
QNTY	LABEL	NAME
1	LVRX1	LEFT VERTICAL RECTANGLE
1	RVRX1	RIGHT VERTICAL RECTANGLE
1	BHRX1	BOTTOM HORIZONTAL RECT.
1	THRX1	TOP HORIZONTAL RECT.
2	CVH2	CENTER VERTICAL HALF
4	GRN	1" GREEN THUMB SCREW
□	RED	2" RED THUMB SCREW
1	CT2□4□	COUNTERTOP FOR MQX-F22C

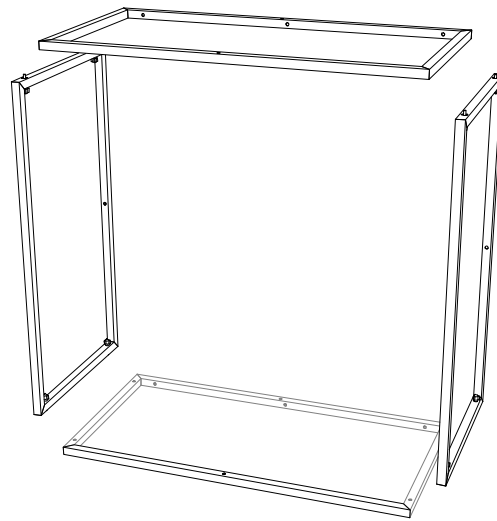
1st Step)

START WITH THE LEFT VERTICAL (LVRX1) ON THE GROUND



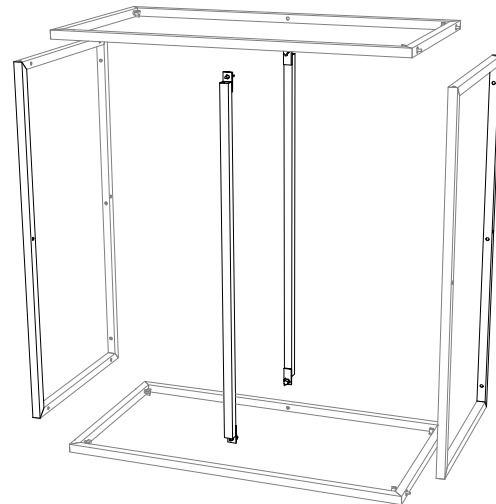
2nd Step)

ATTACH THE TOP HORIZONTAL (THRX1), THE BOTTOM HORIZONTAL (BHRX1), AND THE OTHER RIGHT VERTICAL (RVRX1)



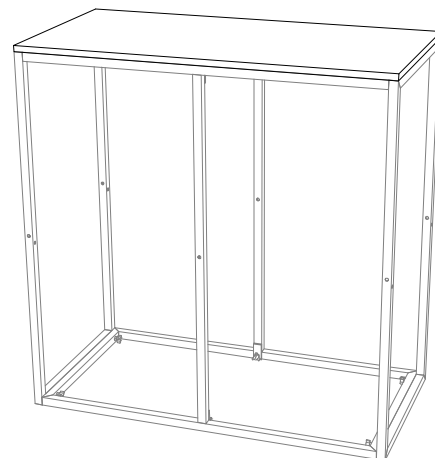
3rd Step)

ROTATE AND ATTACH THE (2) CENTER VERTICAL (CVH2)

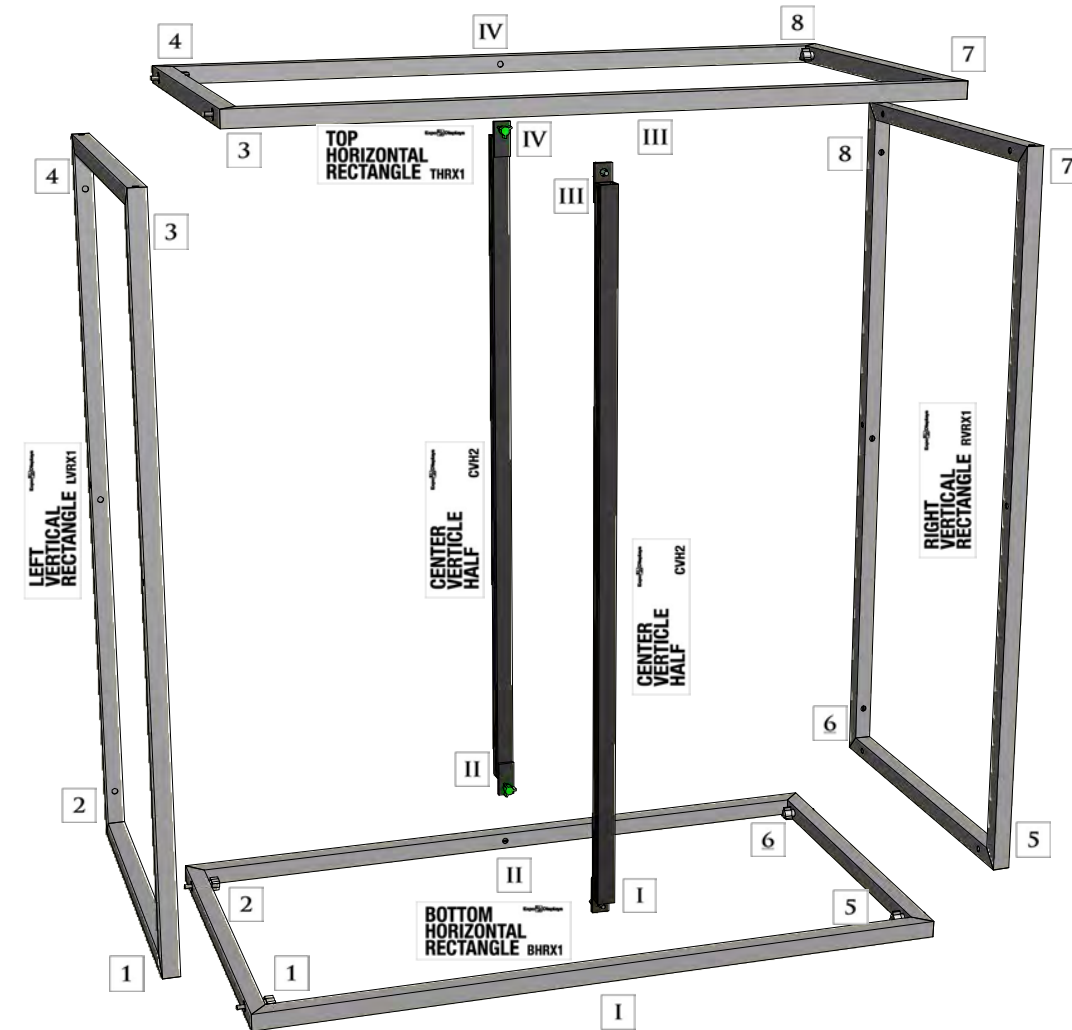


4th Step)

ATTACH THE COUNTERTOP IF NEEDED



MATCH NUMBERS TO CONSTRUCT



**EXPO MultiQuad**  
An ExpoDisplays Product

**EXPO**

ExpoDisplays

3401 Mary Taylor Road  
Birmingham, Alabama 35235  
(205) 439-8200

Drawn By: AKHIII

THIS PART USED TO MAKE  
**MQX-F22**  
2x2 MAX FRAME



ASSEMBLY  
INSTRUCTIONS

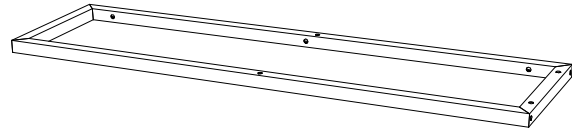
2x2 MAX FRAME  
MQX-F22

APPENDIX L

PARTS LIST		
QNTY	LABEL	NAME
1	LVRX1	LEFT VERTICAL RECTANGLE
1	RVRX1	RIGHT VERTICAL RECTANGLE
1	BHRX2	BOTTOM HORIZONTAL RECT.
1	THR2	TOP HORIZONTAL RECT.
□	RED	2" RED THUMB SCREW

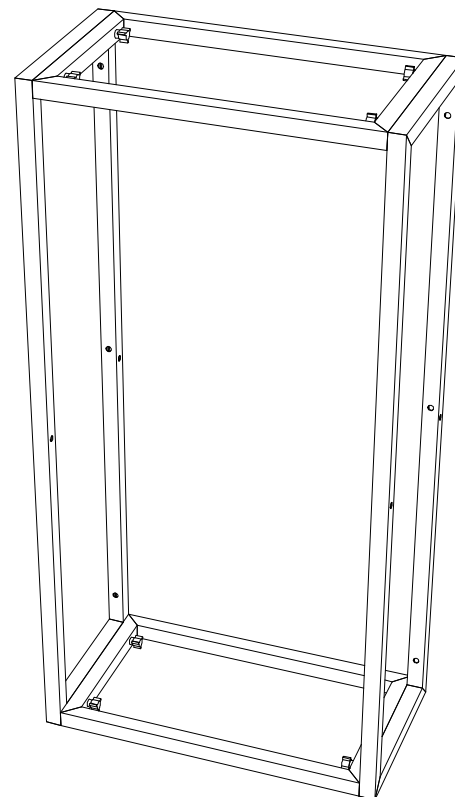
1 (S)

START WITH THE LEFT VERTICAL RECTANGLE (LVR1) ON THE GROUND



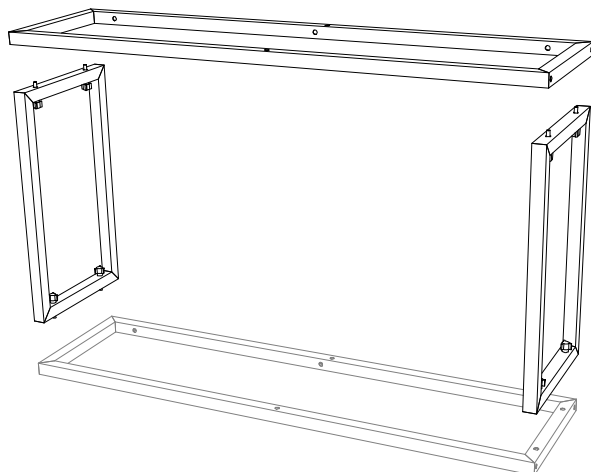
(rd S)

STAND UP RIGHT

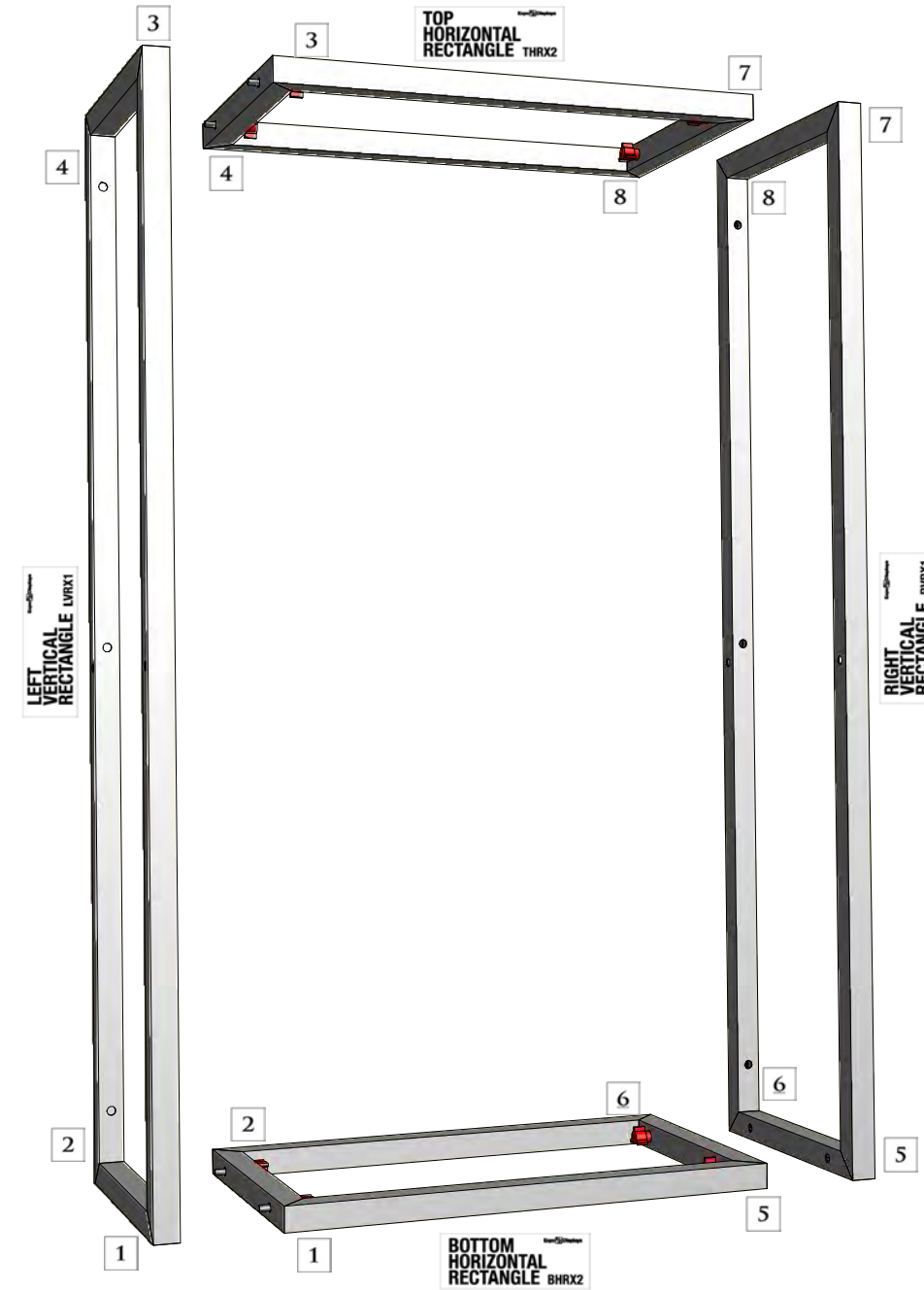


2nd S)

ATTACH THE TOP & BOTTOM HORIZONTAL (THR2, BHR2), THEN ATTACH THE RIGHT VERTICAL RECTANGLE



MATCH NUMBERS TO CONSTRUCT



Expo Displays

3401 Mary Taylor Road  
Birmingham, Alabama 35235  
(205) 439-8200

Drawn By: AKHIII

THIS PART USED TO MAKE  
**MOX-F12**  
1x2 MAX FRAME

ASSEMBLY  
INSTRUCTIONS

1x2 MAX FRAME  
MOX-F12

APPENDIX V