

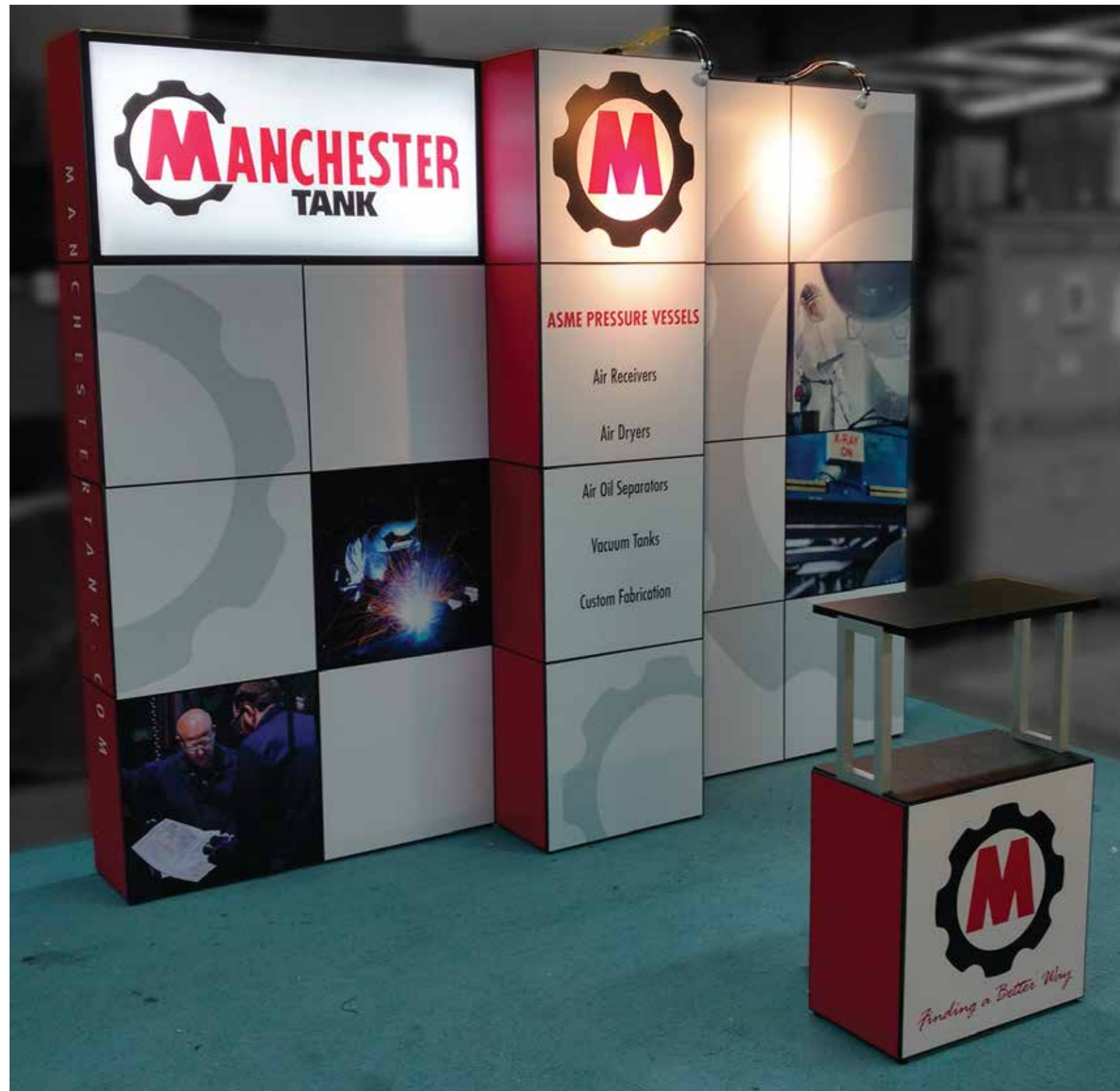
WHEN ASSEMBLING **EXPO MultiQuad**<sup>®</sup>

REMEMBER YOUR **ABC**'s...

**A**SSEMBLE EACH COMPONENT SEPARATELY

**B**UILD THE DESIRED LAYOUT

**C**OVER YOUR MULTIQUAD LAYOUT WITH QUADS



**Expo EXPO Displays**<sup>®</sup>  
A Division of Diamond Displays International

3401 Mary Taylor Road  
Birmingham, Alabama 35235  
(205) 439-8200

Project Title

10x10 MULTIQUAD<sup>®</sup>

Sheet Title

ASSEMBLY  
INSTRUCTIONS  
COVER SHEET

**EXPO MultiQuad**<sup>®</sup>  
*An ExpoDisplays Product*

**Manchester Tank**  
10 x 10 Custom MultiQuad<sup>®</sup>

# ELECTRICAL FLOORPLAN



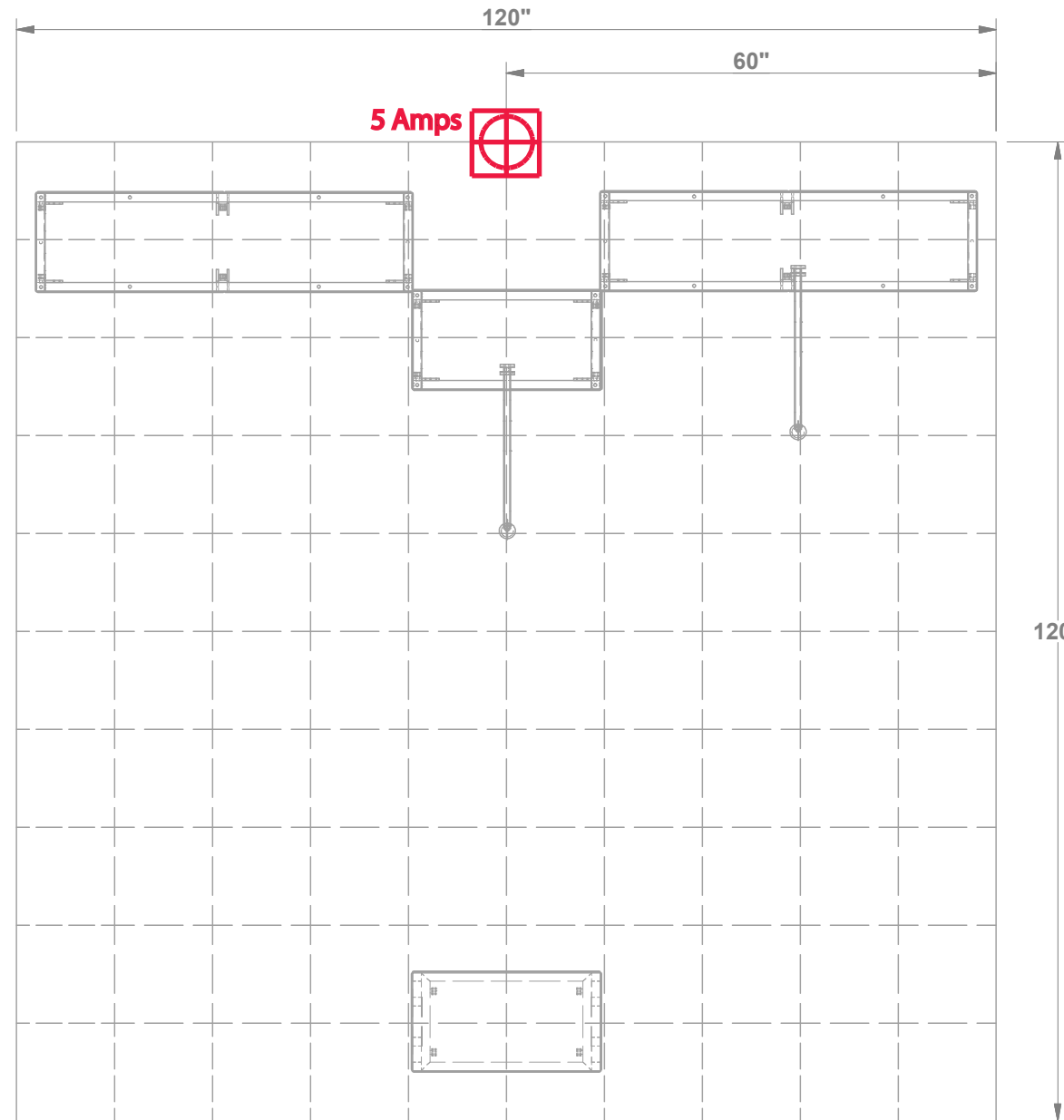
Project Title

10x10 MULTIQAD®

Sheet Title

ASSEMBLY  
INSTRUCTIONS  
ELECTRICAL PLAN

BOOTH # \_\_\_\_\_ ↗



TOP VIEW

BOOTH # \_\_\_\_\_ ↗

BOOTH # \_\_\_\_\_ ↗

BOOTH # \_\_\_\_\_ ↘

FRONT OF DISPLAY

1 Square = 1'- 0"

SHOW: \_\_\_\_\_

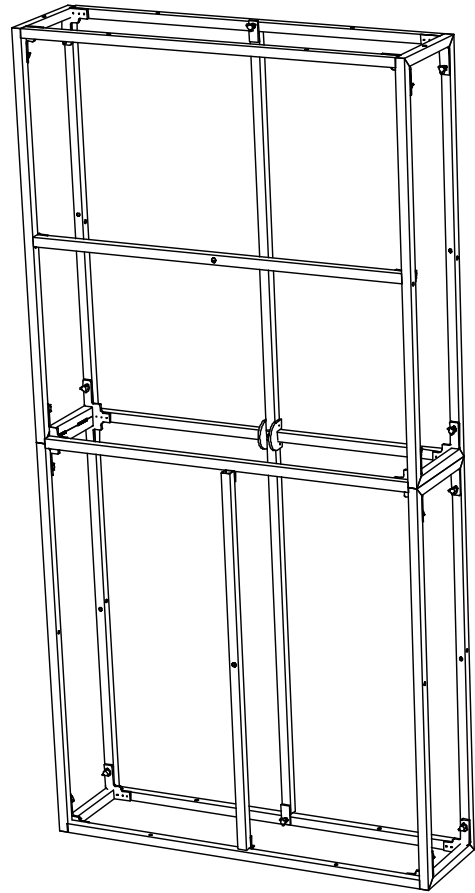
BOOTH: \_\_\_\_\_

	MAIN ELECTRICAL DROP
	ELECTRICAL OUTLET
	POWER CORDS RUN UNDER CARPET

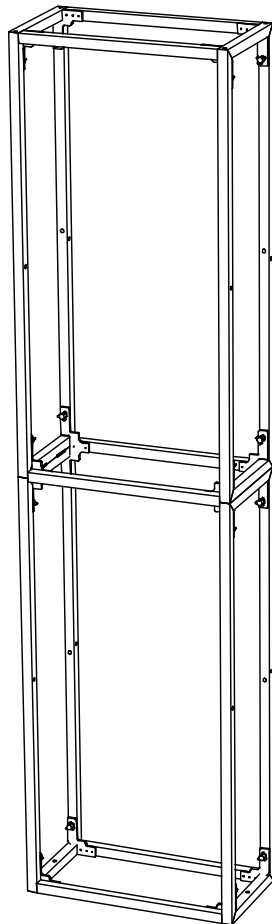
# STANDARD PARTS

**1**

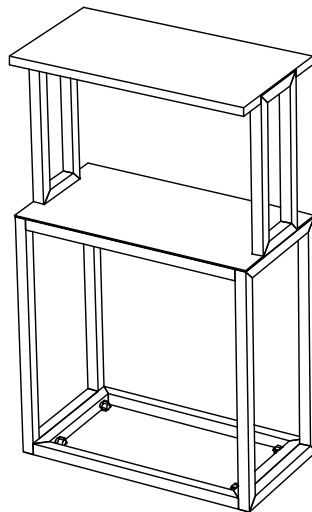
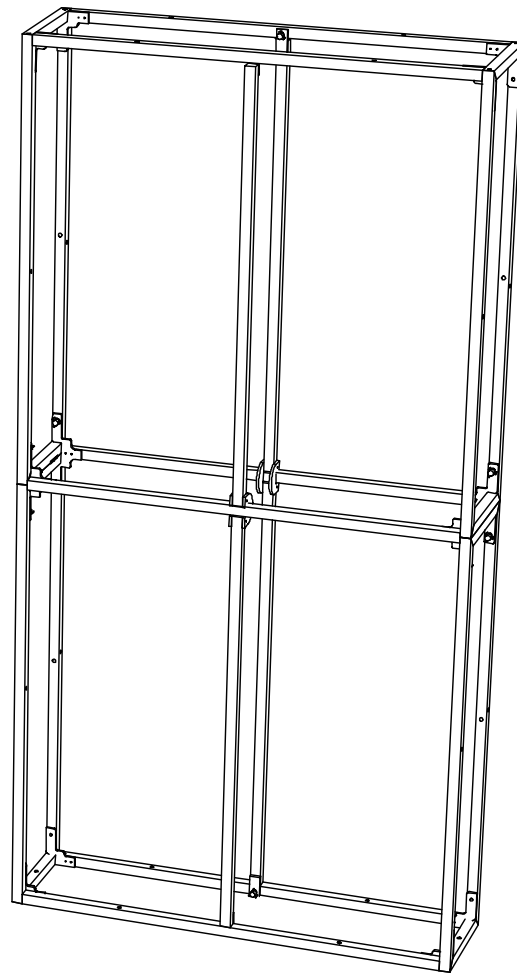
(SEE APPENDIX B-8)



STANDARD FRAME  
(SEE APPENDIX D)



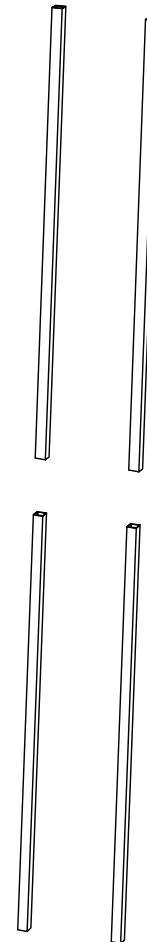
STANDARD FRAME  
(SEE APPENDIX B)



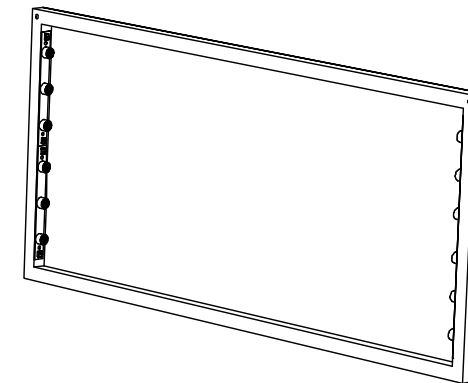
STANDARD PODIUM  
(SEE APPENDIX F)



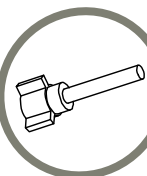
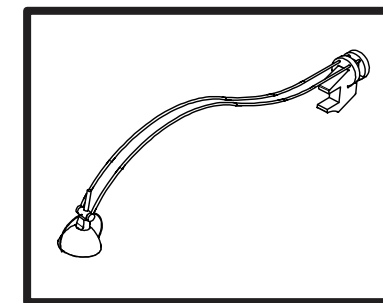
**X 4**



**23 X 46  
BACKLIGHT PANEL**



**X 2**



**X 2**



**Expo EX PO Displays**  
A Division of Diamond Displays International

3401 Mary Taylor Road  
Birmingham, Alabama 35235  
(205) 439-8200

Project Title

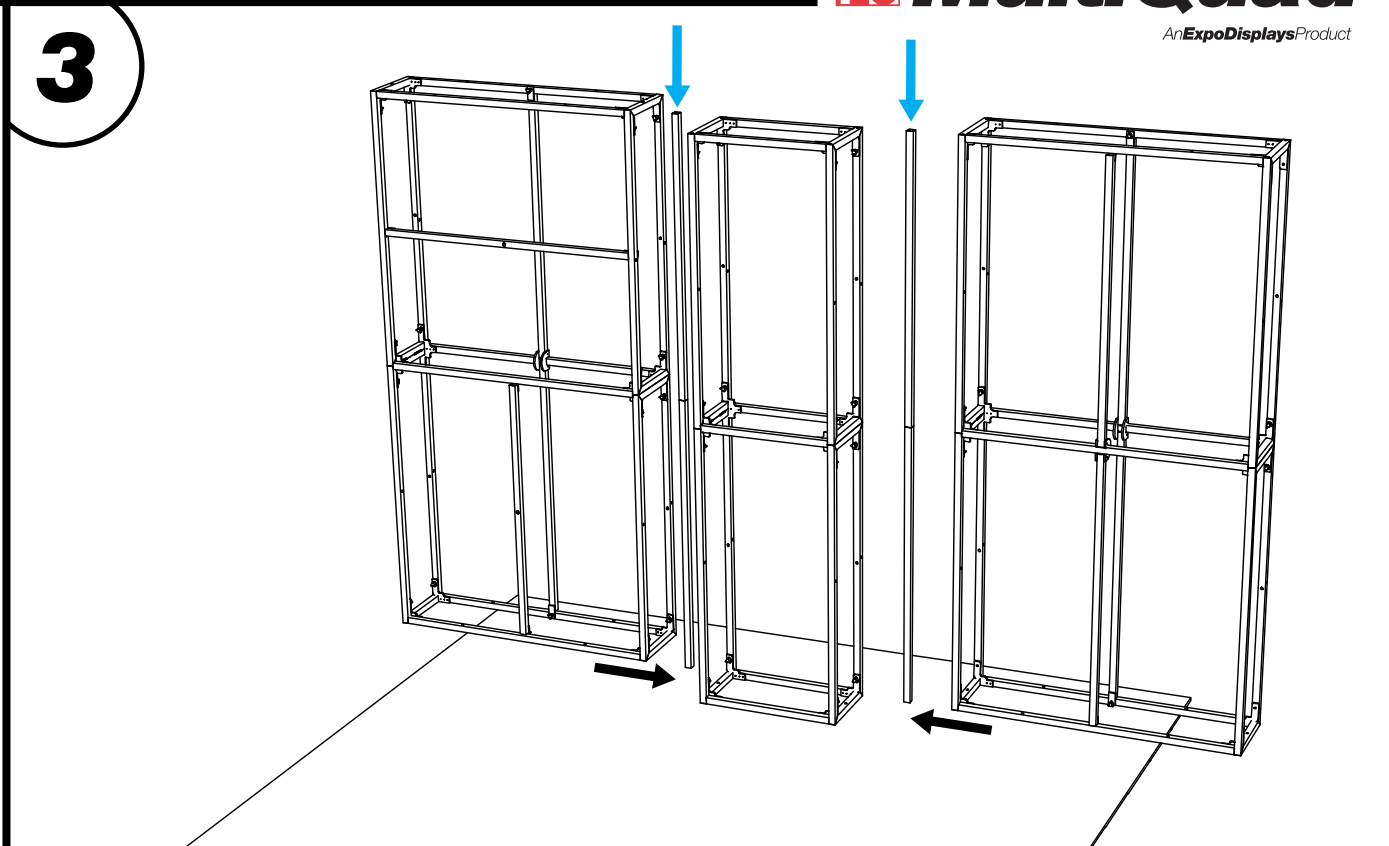
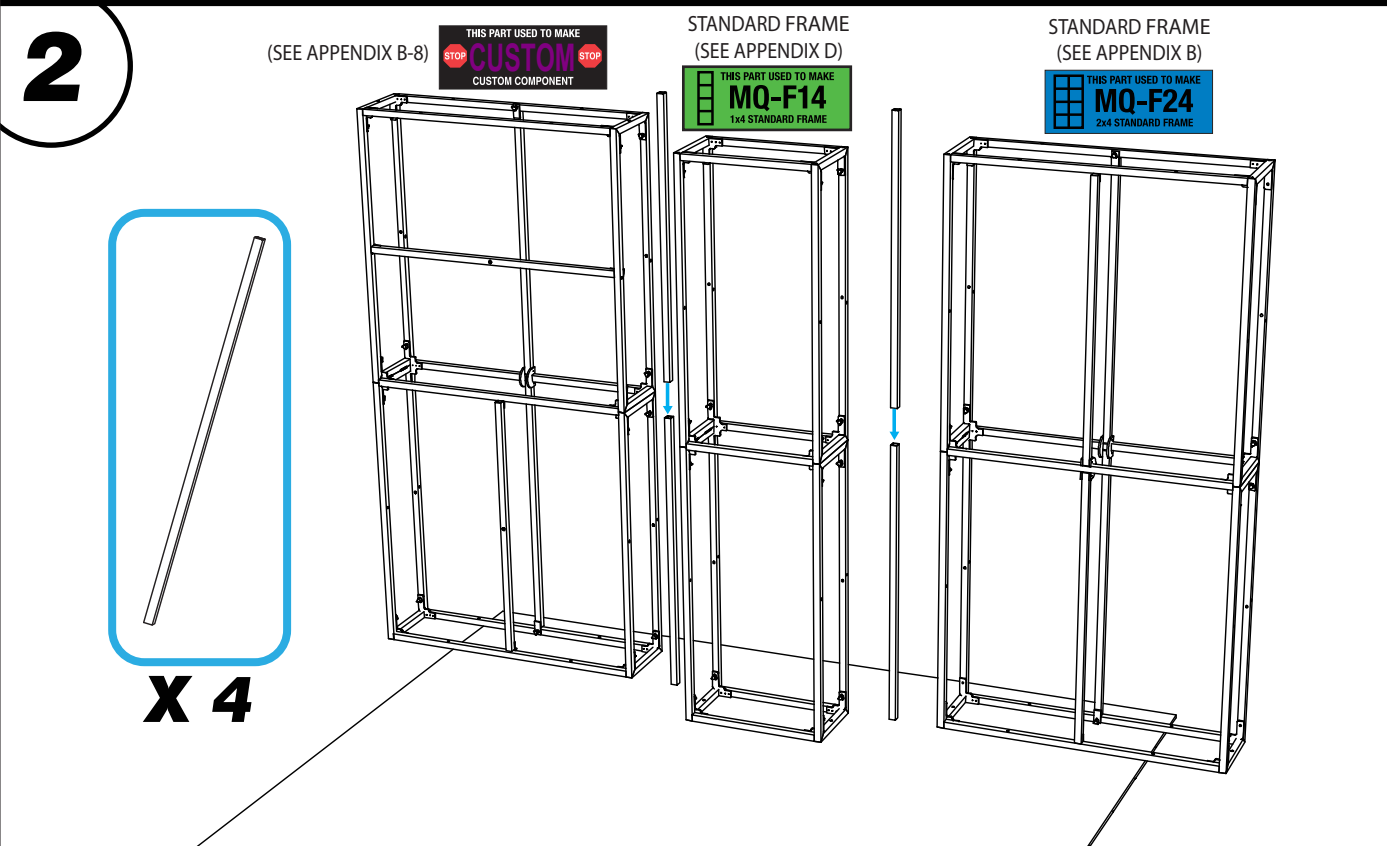
**10x10 MULTIQUAD®**

Sheet Title

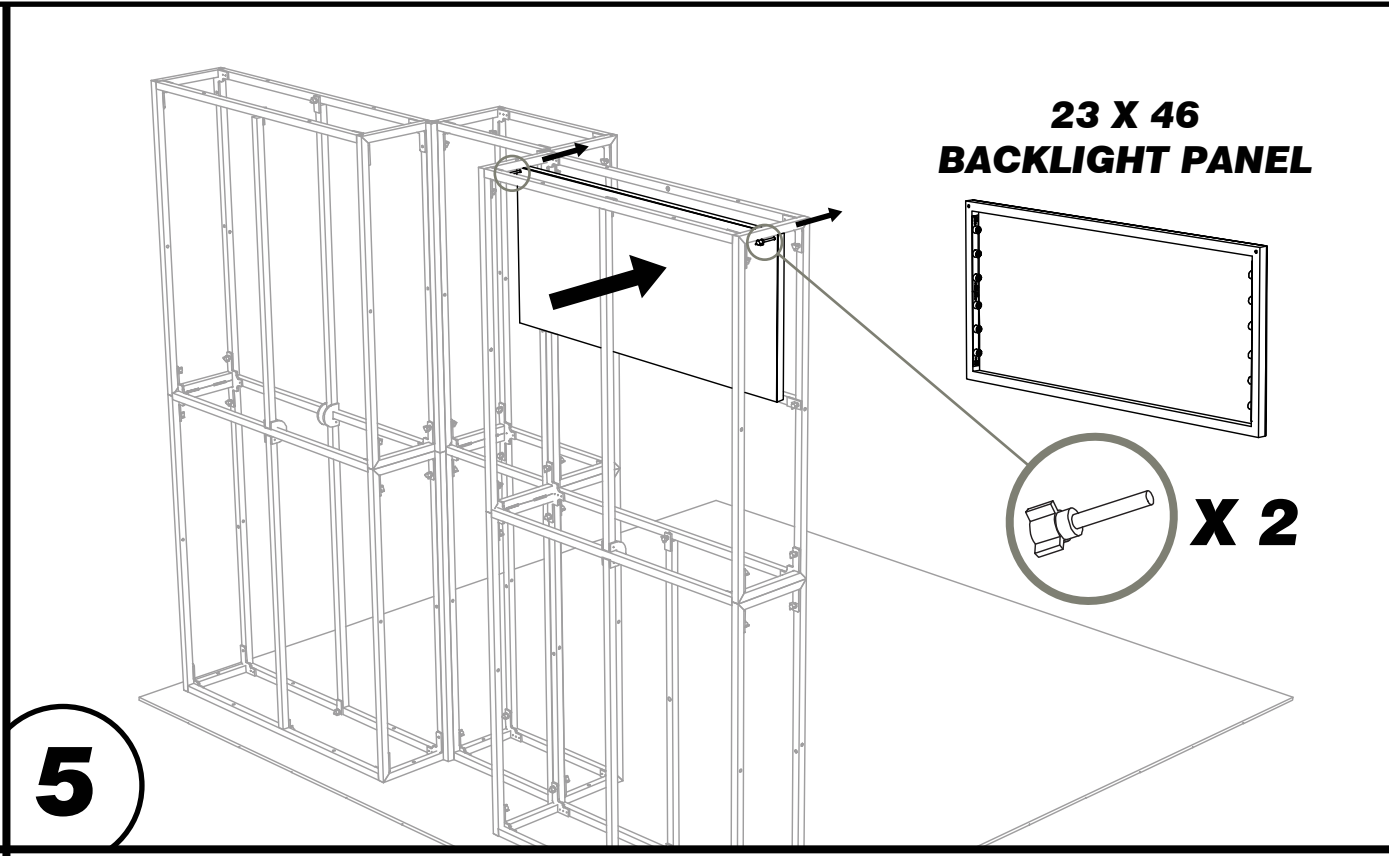
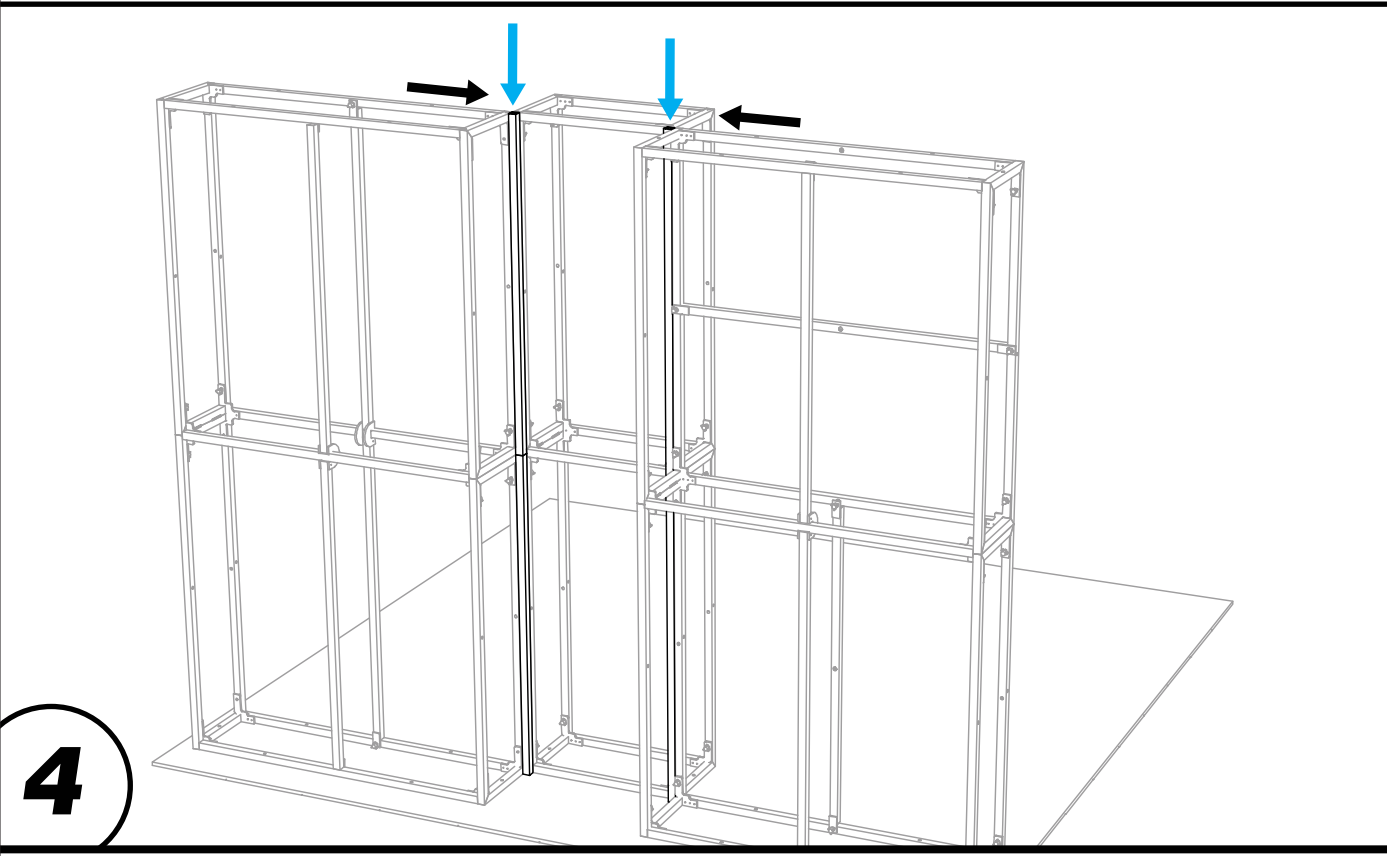
**ASSEMBLY  
INSTRUCTIONS  
STANDARD PARTS**

**FIND BOX LABELED WITH STICKERS SHOWN AND  
ASSEMBLE ALL FRAMES LISTED SEPARATELY USING APPENDIX PAGES**

# MAIN WALL ASSEMBLY



**STACK ( 2 ) PAIRS OF 46" CORNER CONNECTORS BETWEEN CUSTOM, MQ-F14 & MQ-F24 AS SHOWN**



**JOIN FRAMES & CORNER CONNECTORS AS SHOWN**

**INSTALL 23 X 46 BACKLIGHT PANEL INSIDE WITH ( 2 ) BLACK THUMBSCREWS AS SHOWN**



**Expo EX PO Displays**  
A Division of Diamond Displays International

3401 Mary Taylor Road  
Birmingham, Alabama 35235  
(205) 439-8200

Project Title

**10x10 MULTIQUAD®**

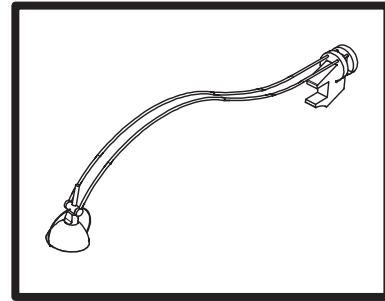
Sheet Title

**ASSEMBLY INSTRUCTIONS**  
**MAIN WALL ASSEMBLY**

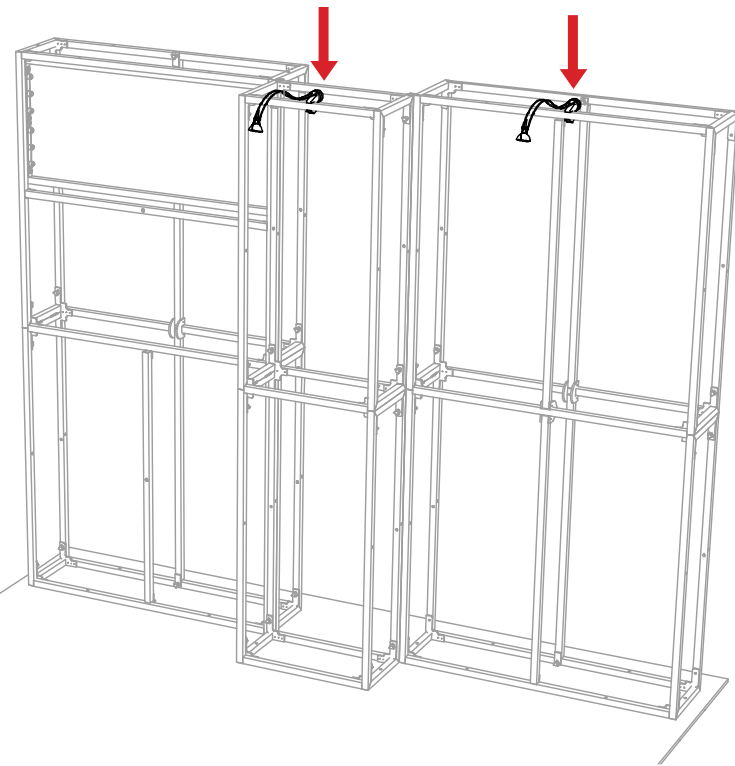


# STEMLIGHTS & PODIUM SET UP

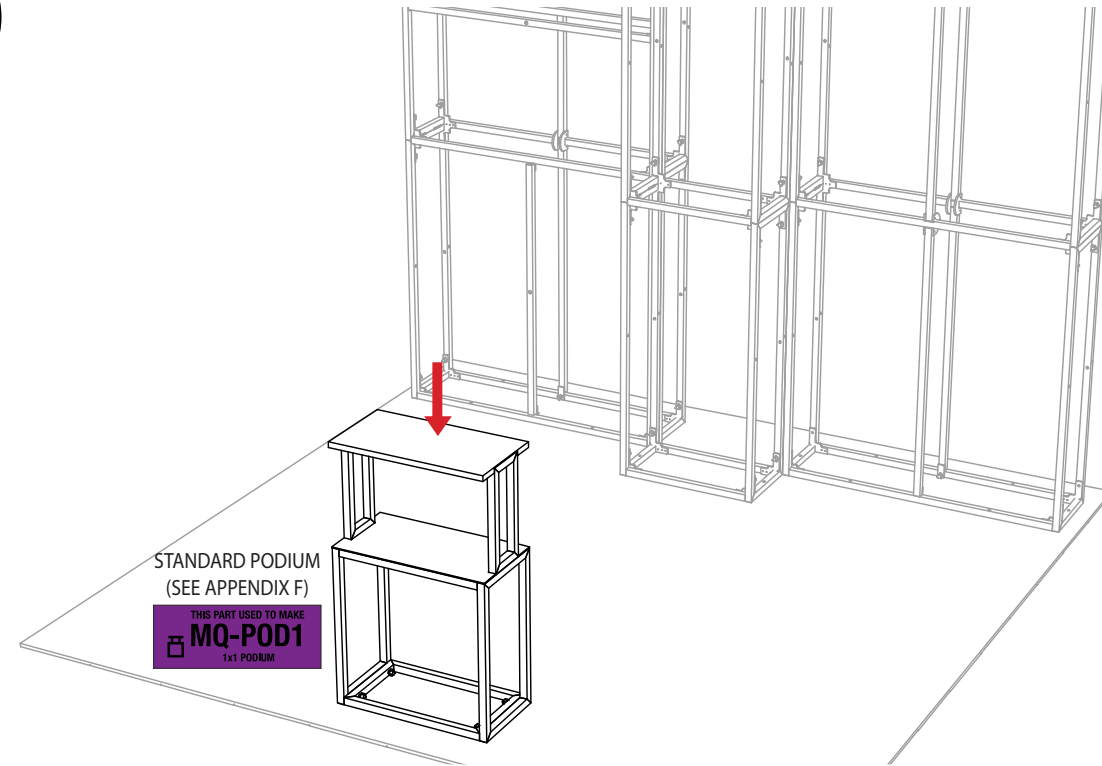
6



X 2



7



STANDARD PODIUM  
(SEE APPENDIX F)  
THIS PART USED TO MAKE  
**MQ-POD1**  
1x1 PODIUM

( SEE APPENDIX P-2 )

ATTACH ( 2 ) **STEMLIGHTS** TO TOP OF FRAMES AS SHOWN

PLACE **MQ-POD1** IN FRONT CENTER OF FLOORSPACE

	POWER ADAPTER CORD
	EXTENSION CORD
	AC ADAPTER CORD
	POWER "SQUID"
	4-WAY DC SPLITTER
	POWER DROP



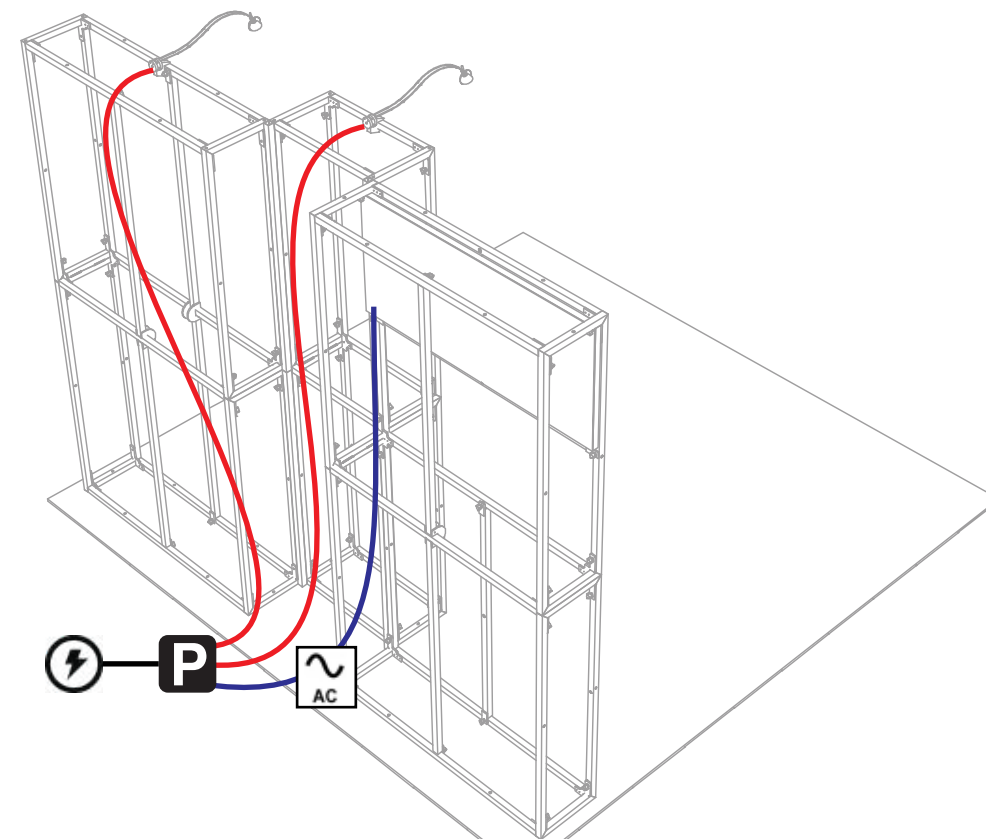
POWER "SQUID"  
( PROVIDED )



AC ADAPTER



POWER ADAPTER  
( PROVIDED )



## ELECTRICAL REQUIREMENTS



Expo **EX PO** Displays  
A Division of Diamond Displays International

3401 Mary Taylor Road  
Birmingham, Alabama 35235  
(205) 439-8200

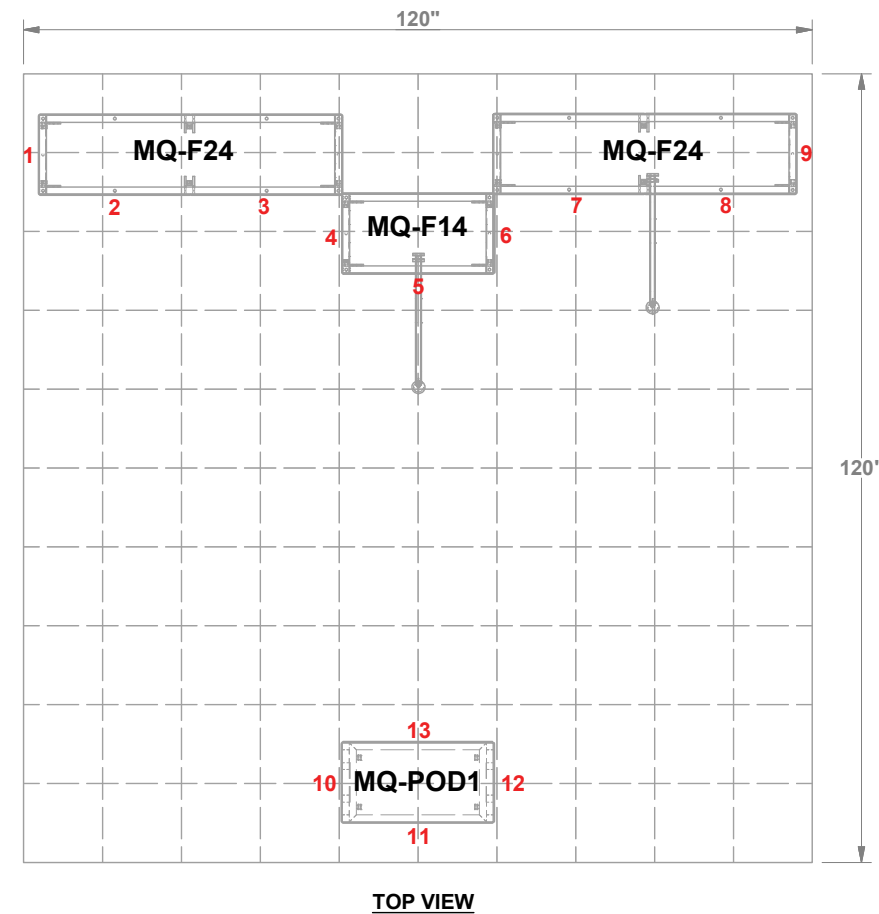
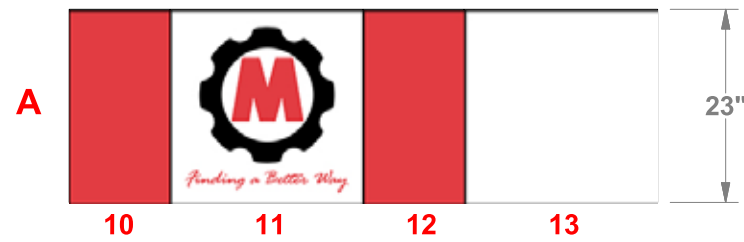
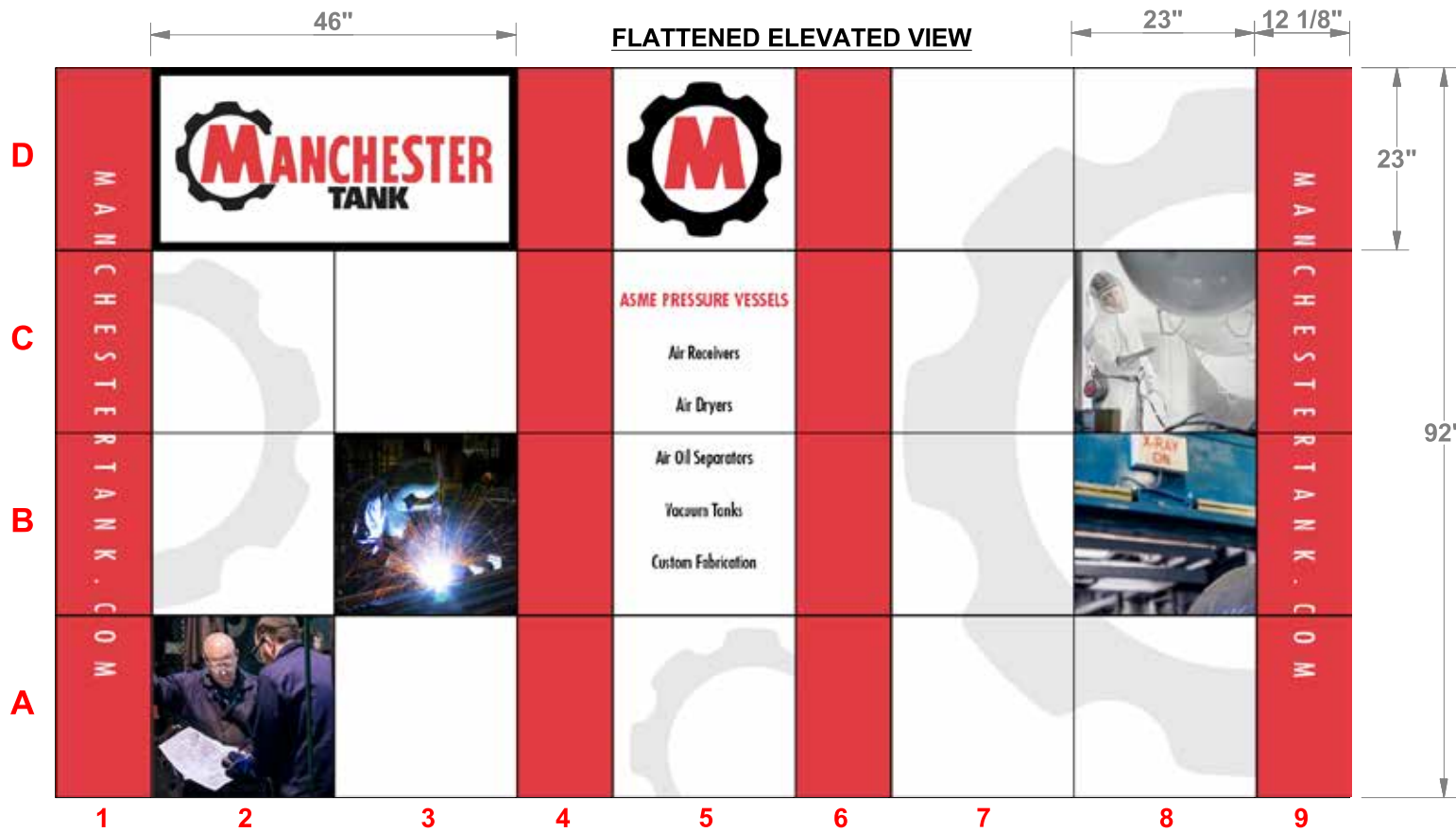
Project Title

10x10 MULTIQAD®

Sheet Title

ASSEMBLY  
INSTRUCTIONS  
STEMLIGHTS &  
PODIUM SET UP

# GRAPHIC LAYOUT



**Expo EXPO Displays**  
A Division of Diamond Displays International

3401 Mary Taylor Road  
Birmingham, Alabama 35235  
(205) 439-8200

Project Title

**10x10 MULTIQUAD®**

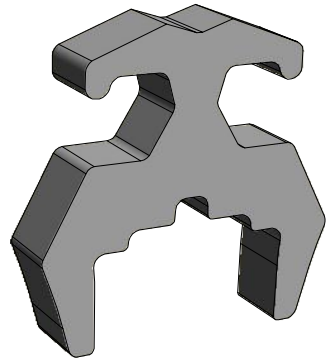
Sheet Title

**ASSEMBLY INSTRUCTIONS**  
**GRAPHIC LAYOUT**

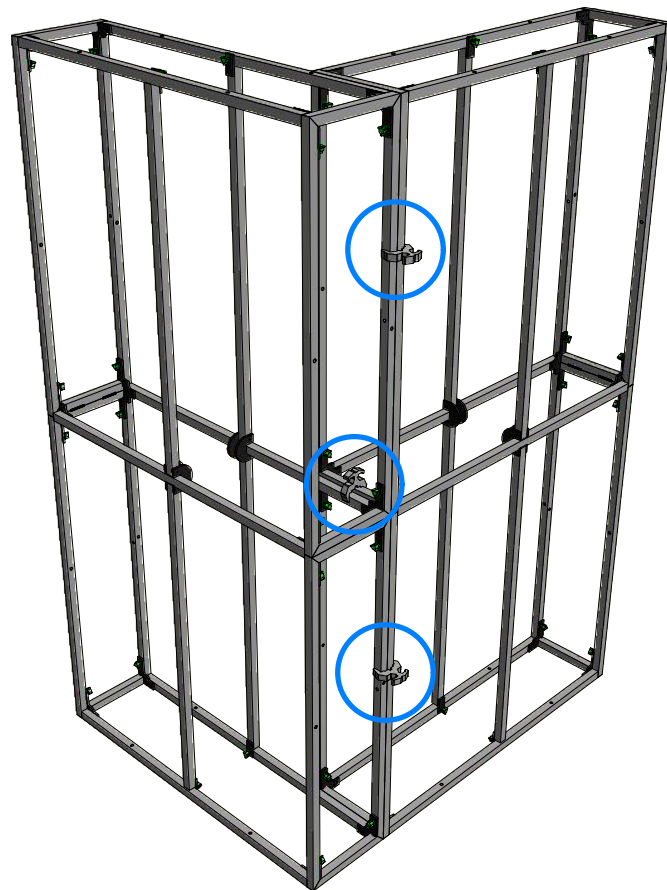


**FRAME CLAMP INSTRUCTION  
MQ-CLMP**

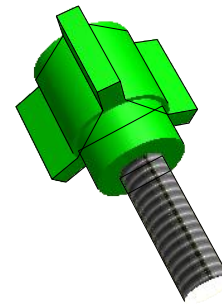
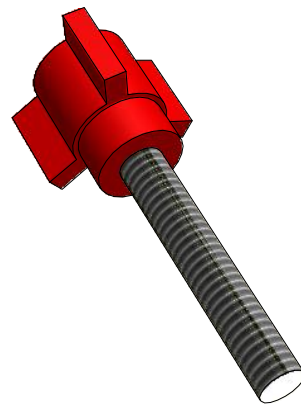
**(NOT REQUIRED IN EVERY CONFIGURATION)**



THE MQ-CLMP IS A FRICTION-FIT CONNECTOR / ALIGNMENT TOOL THAT DOES NOT REQUIRE TOOLS. THEY ARE TO BE USED IN ABNORMAL MULTIQUAD FRAME CONFIGURATIONS OR AS ADDITIONAL FRAME SECURITY IN SPECIAL SITUATIONS



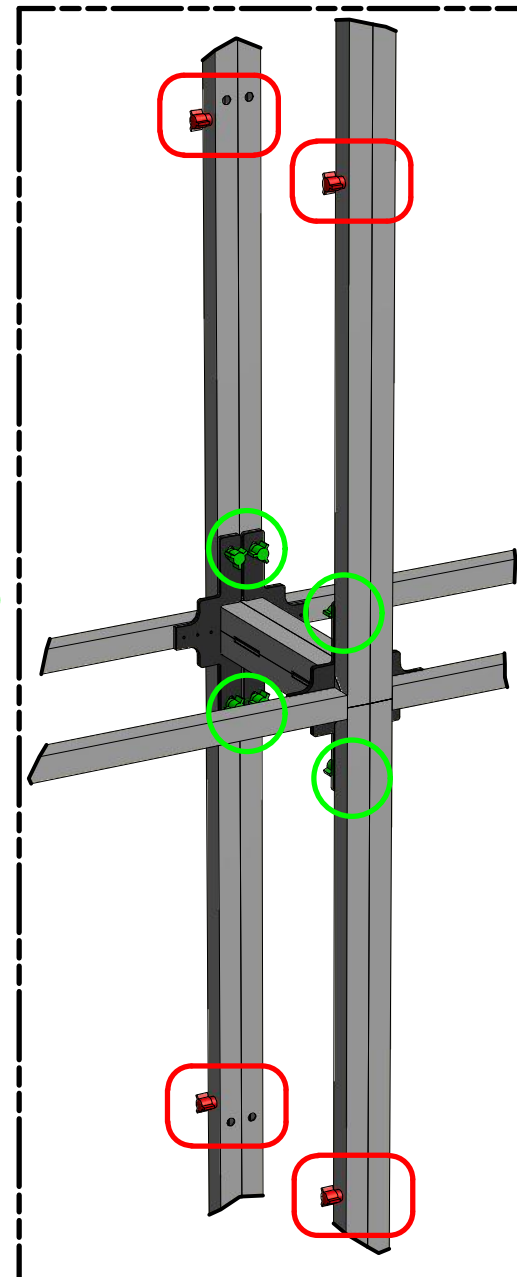
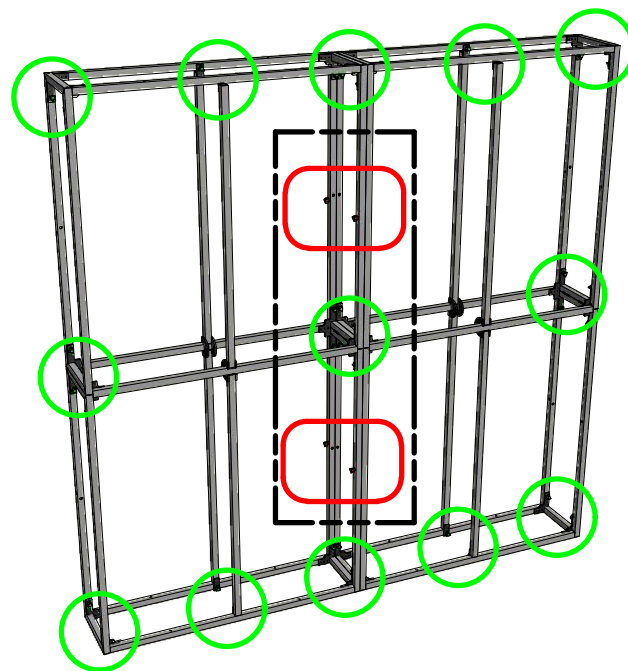
**THUMB SCREW INSTRUCTION  
MQ-TSR2 / MQ-TSG1**



THE 2" RED THUMB SCREW IS USED TO CONNECT MULTIQUAD FRAMES TO OTHER MULTIQUAD FRAMES. EACH FRAME HAS RIVET NUT ON ONE SIDE AND A HOLE ON THE OTHER TO ALLOW FRAME TO FRAME CONNECTION

THE 1" GREEN THUMB SCREWS ARE USED WHEN ASSEMBLING 1x4 AND 2x4 FRAMES. SEE APPENDIX PAGES

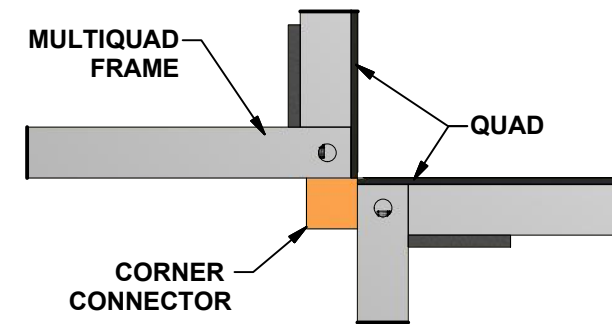
**DUE TO THE RIVET NUTS, ALL FRAMES HAVE A LEFT AND RIGHT SIDE. VERIFY FRAME ORIENTATION TO ALLOW FRAME TO FRAME CONNECTION**



**CORNER CONNECTOR INSTRUCTION  
MQ-BTW**

**(NOT REQUIRED IN EVERY CONFIGURATION)**

THE MQ-BTW CORNER ALIGNMENT TOOL IS DESIGNED TO AID IN THE ALIGNMENT OF FRAMES AS NEEDED IN SOME MULTIQUAD CONFIGURATIONS.



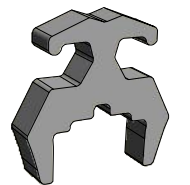
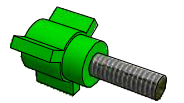
AFTER TWO MULTIQUAD FRAMES ARE SET "CORNER-TO-CORNER" THE MQ-BTW SIMPLY ATTACHES TO THE EXISTING MAGNETS ON THE FRAME



**Expo Displays**

3401 Mary Taylor Road  
Birmingham, Alabama 35235  
(205) 439-8200

Drawn By: AKHIII



**ASSEMBLY  
INSTRUCTIONS**

CONNECTORS & ALIGNMENT TOOLS

**APPENDIX A**

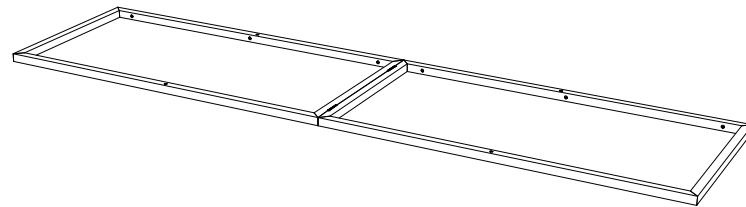
PARTS LIST		
QNTY	LABEL	NAME
1	LVHX	LEFT VERTICAL HINGED MAX
1	RVHX	RIGHT VERTICAL HINGED MAX
2	BH1	BOTTOM HORIZONTAL BAR
2	TH1	TOP HORIZONTAL BAR
2	MH1	MIDDLE HORIZONTAL BAR
1	CVH1	CENTER VERTICAL HINGED BAR
2	CVH2	CENTER VERTICAL HALF
22	GRN	1" GREEN THUMB SCREW

**NOTE:**

REFER TO APPENDIX J FOR BASIC MQX-F24 FRAME ASSEMBLY AND APPENDIX J7 FOR MAX MEDIA MOUNT ASSEMBLY

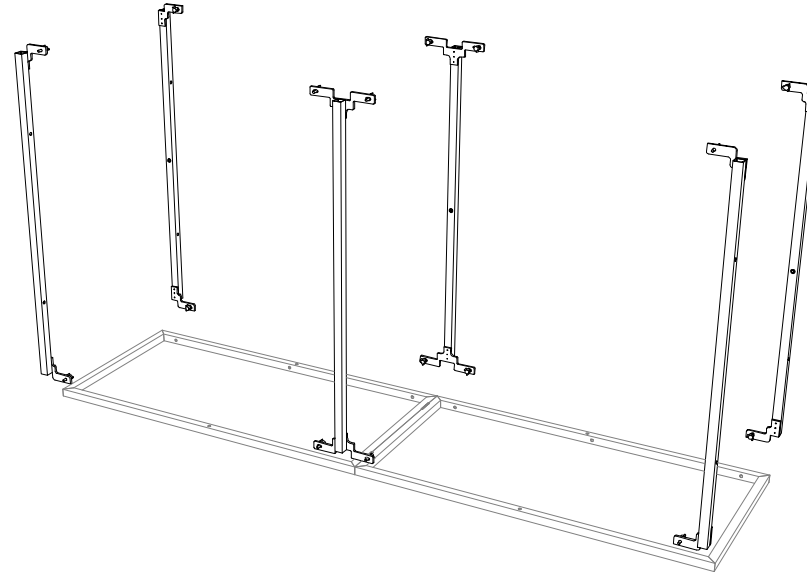
**1st Step)**

START WITH THE LEFT VERTICAL (LVHX) ON THE GROUND



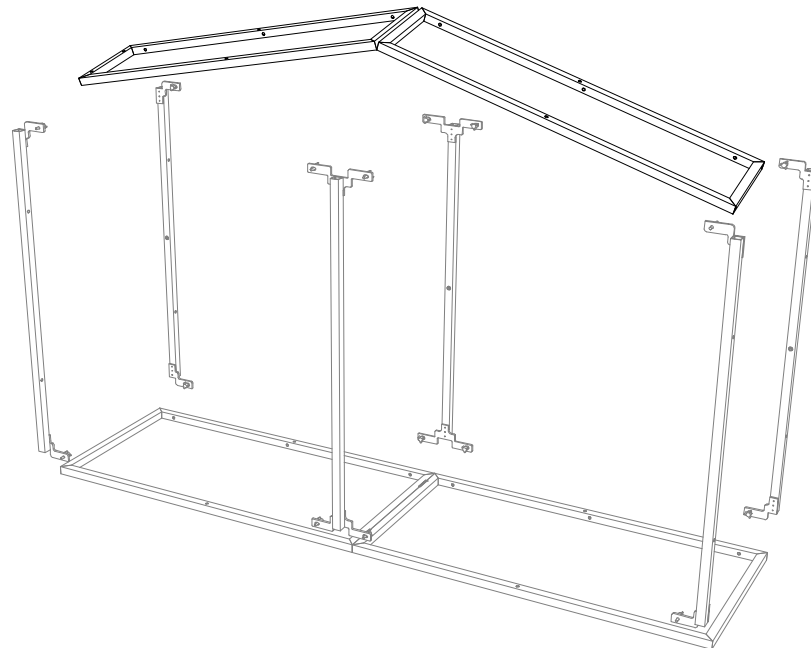
**2nd Step)**

ATTACH THE (2) TOP HORIZONTAL (TH1), THE (2) MIDDLE HORIZONTAL (MH1), AND THE (2) BOTTOM HORIZONTAL (BH1)



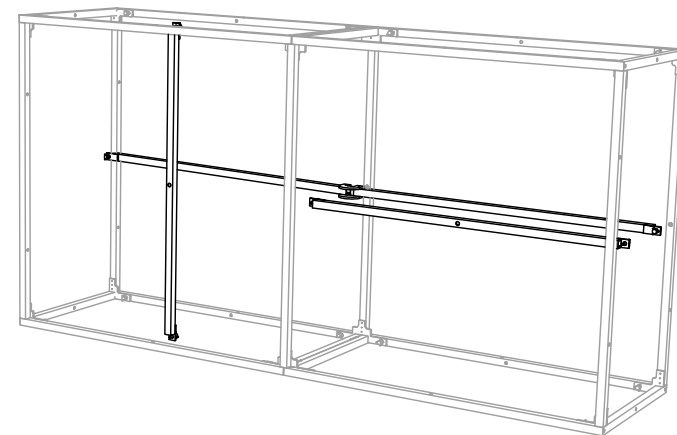
**3rd Step)**

ATTACH THE RIGHT HINGED SIDE (RVH1)

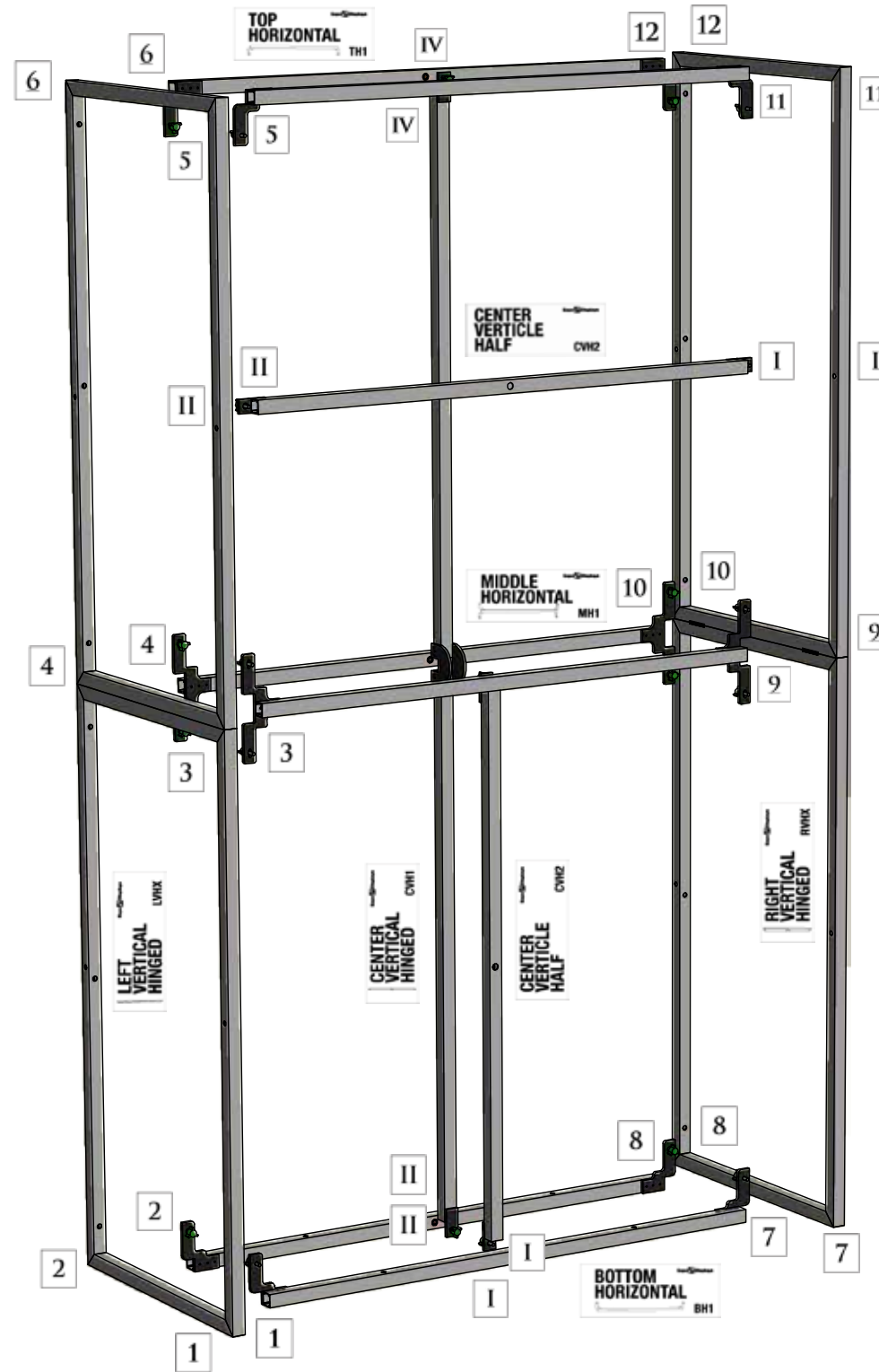


**4th Step)**

ATTACH THE (1) CENTER VERTICAL HINGED (CVH1) TO BACK OF FRAME, AND (1) CENTER VERTICAL (CVH2) TO BOTTOM-FRONT OF FRAME, THEN (1) CENTER VERTICAL (CVH2) TO TOP FRONT OF FRAME ( FLIP HORIZONTALLY ) AND STAND UP-RIGHT



\*MATCH NUMBERS TO CONSTRUCT



Expo Displays

3401 Mary Taylor Road  
Birmingham, Alabama 35235  
(205) 439-8200

Drawn By: CASS

THIS PART USED TO MAKE  
**CUSTOM STOP**  
CUSTOM COMPONENT

CROSSBEAM TOP

ASSEMBLY INSTRUCTIONS

MQX-F24 WITH MAX WITH CROSSBEAM TOP

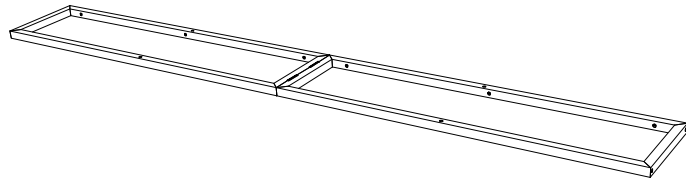
APPENDIX B-8



PARTS LIST		
QNTY	LABEL	NAME
1	LVH1	LEFT VERTICAL HINGED
1	RVH1	RIGHT VERTICAL HINGED
2	BH1	BOTTOM HORIZONTAL
2	MH1	MIDDLE HORIZONTAL
2	TH1	TOP HORIZONTAL
2	CVH1	CENTER VERTICAL HINGED
2	GRN	1" GREEN THUMB SCREW
4	RED	2" RED THUMB SCREW

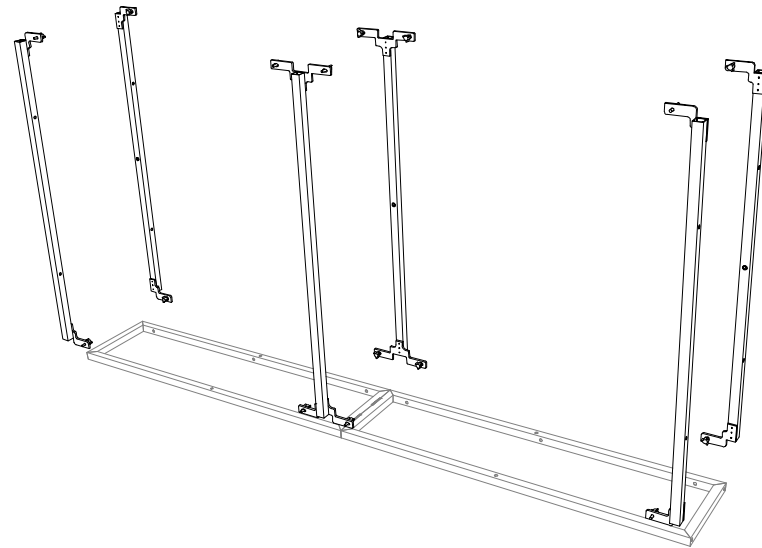
1st S

START WITH THE LEFT VERTICAL HINGED (LVH1) ON THE GROUND



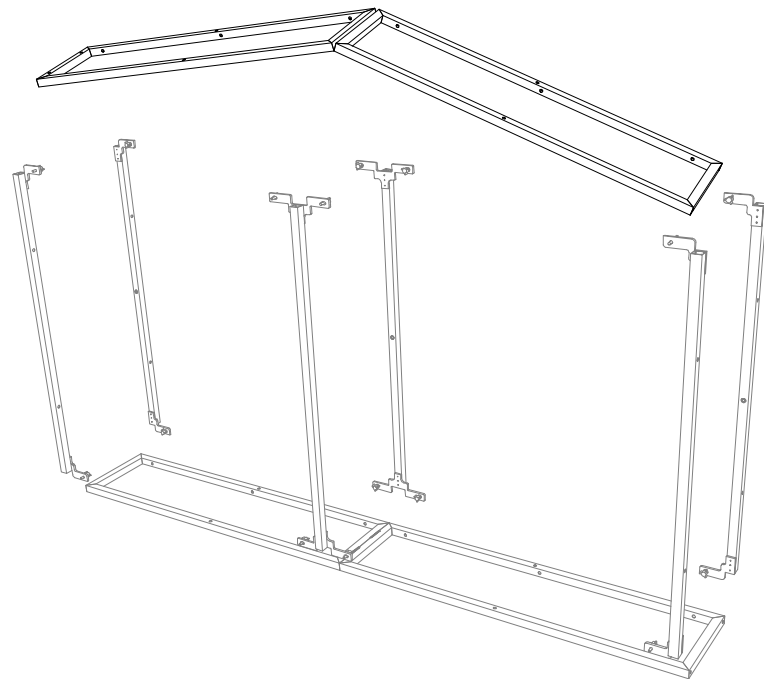
2nd S

ATTACH THE (2) TOP HORIZONTAL (TH1), THE (2) MIDDLE HORIZONTAL (MH1), AND THE (2) BOTTOM HORIZONTAL (BH1)



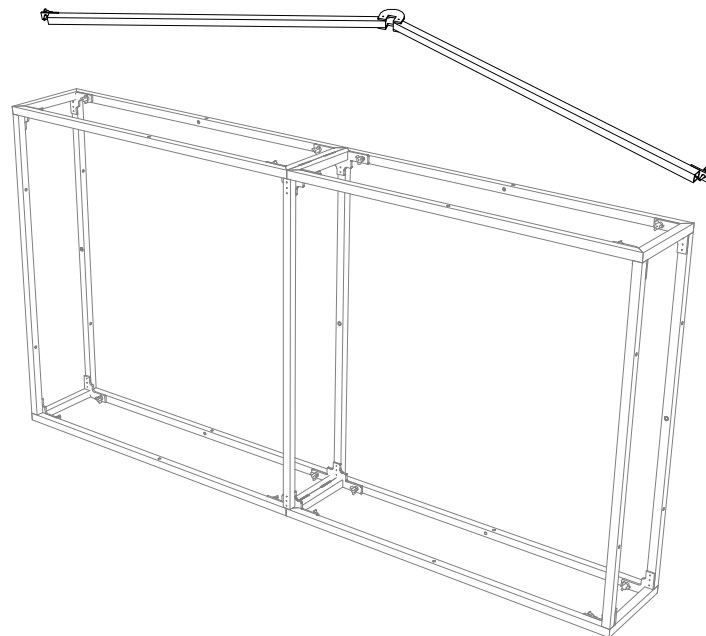
3rd S

ATTACH THE RIGHT HINGED SIDE (RVH1)



4th S

ATTACH THE (2) CENTER VERTICAL HINGED (CVH1) AND STAND UP-RIGHT



MATCH NUMBERS TO CONSTRUCT



Expo Displays

3401 Mary Taylor Road  
Birmingham, Alabama 35235  
(205) 439-8200

Drawn By: AKHIII

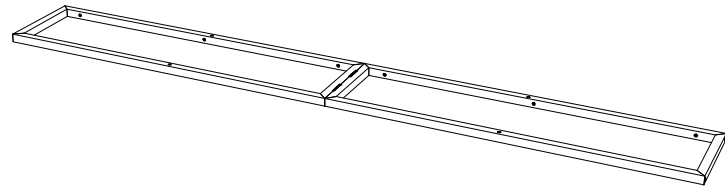
THIS PART USED TO MAKE  
**MQ-F24**  
2x4 STANDARD FRAME

ASSEMBLY INSTRUCTIONS  
2x4 STANDARD FRAME  
MQ-F24

APPENDIX B

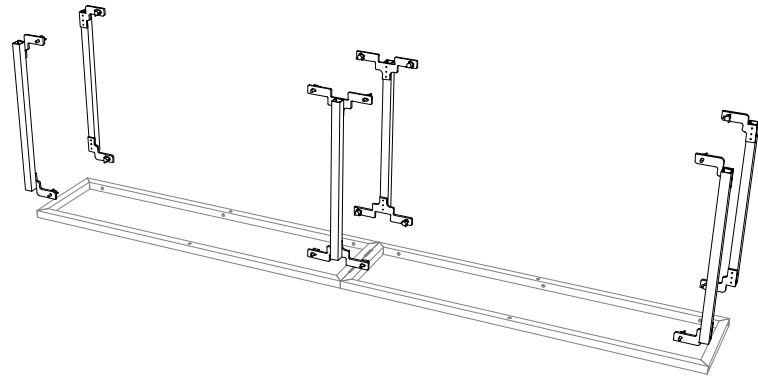
1st Step)

START WITH THE LEFT VERTICAL HINGED (LVH1) ON THE GROUND



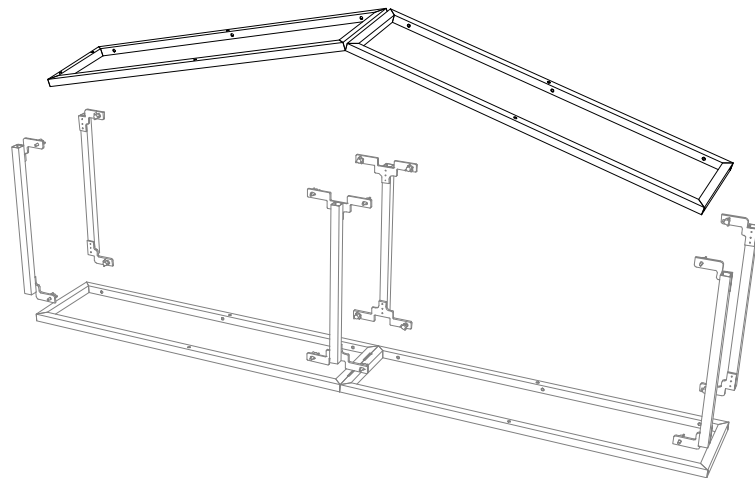
2nd Step)

ATTACH THE (2) TOP HORIZONTAL (TH2), THE (2) MIDDLE HORIZONTAL (MH2), AND THE (2) BOTTOM HORIZONTAL (BH2)



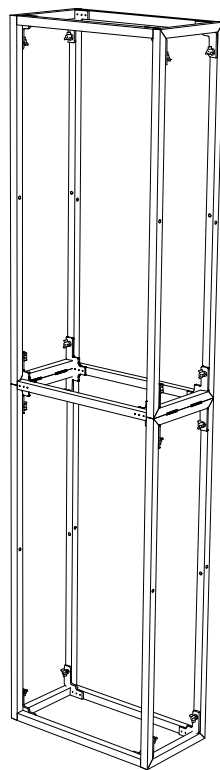
3rd Step)

ATTACH THE RIGHT HINGED SIDE (RVH1)



4th Step)

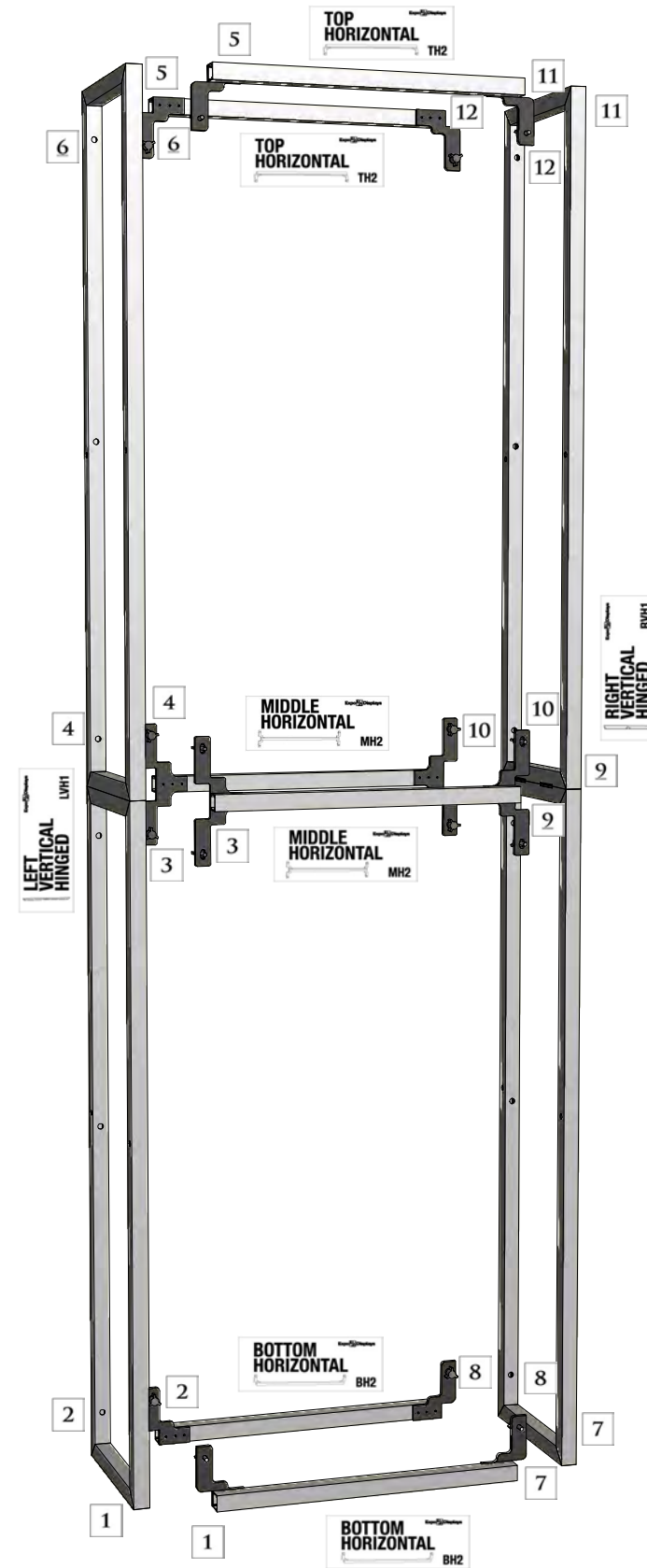
STAND UP-RIGHT



MATCH NUMBERS TO CONSTRUCT



PARTS LIST		
QNTY	LABEL	NAME
1	LVH1	LEFT VERTICAL HINGED
1	RVH1	RIGHT VERTICAL HINGED
2	BH2	BOTTOM HORIZONTAL
2	MH2	MIDDLE HORIZONTAL
2	TH2	TOP HORIZONTAL
1	GRN	1" GREEN THUMB SCREW
4	RED	2" RED THUMB SCREW



Expo Displays

3401 Mary Taylor Road  
Birmingham, Alabama 35235  
(205) 439-8200

Drawn By: AKHIII

THIS PART USED TO MAKE  
**MQ-F14**  
1x4 STANDARD FRAME

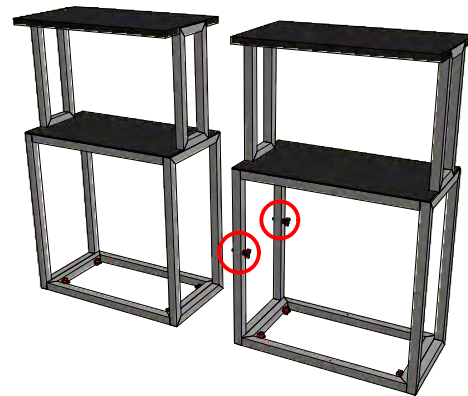
ASSEMBLY INSTRUCTIONS  
1x4 STANDARD FRAME  
MQ-F14

APPENDIX D

PARTS LIST		
QNTY	LABEL	NAME
1	LVP1	LEFT VERTICAL RECTANGLE
1	RVP1	RIGHT VERTICAL RECTANGLE
1	BHR2	BOTTOM HORIZONTAL RECT.
1	THR2	TOP HORIZONTAL RECT.
1	SSPOD1	SHELF
1	CTPOD1	PODIUM COUNTER TOP
12	RED	2" RED THUMB SCREW

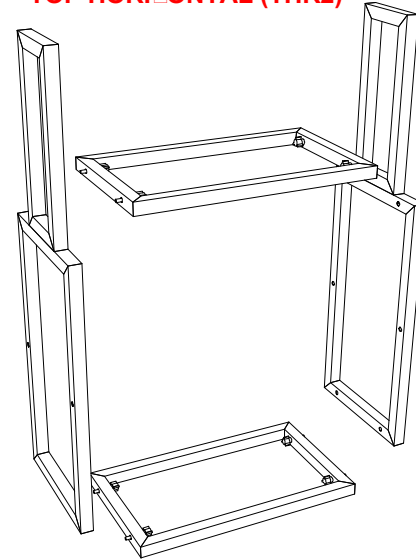
Multiple Podiums

ATTACH MULTIPLE PODIUMS BY RUNNING THE 2" RED THUMBSCREWS THROUGH THE OPEN HOLES OF ONE PODIUM INTO THE THREADED INSERTS OF ANOTHER



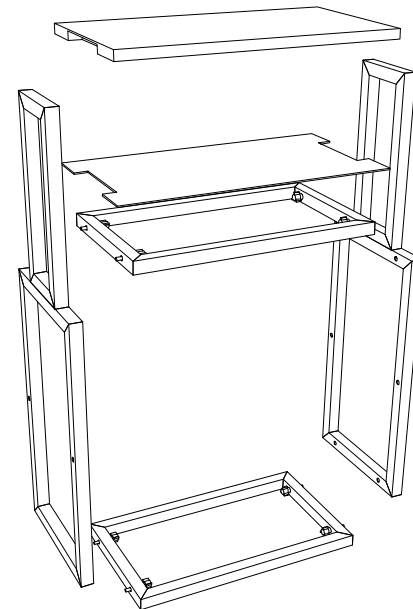
1st Step

START WITH THE BOTTOM HORIZONTAL (BHR2) ON THE GROUND. ATTACH THE LEFT VERTICAL (LVP1), AND THE RIGHT VERTICAL (RVP1). THEN ATTACH THE TOP HORIZONTAL (THR2)

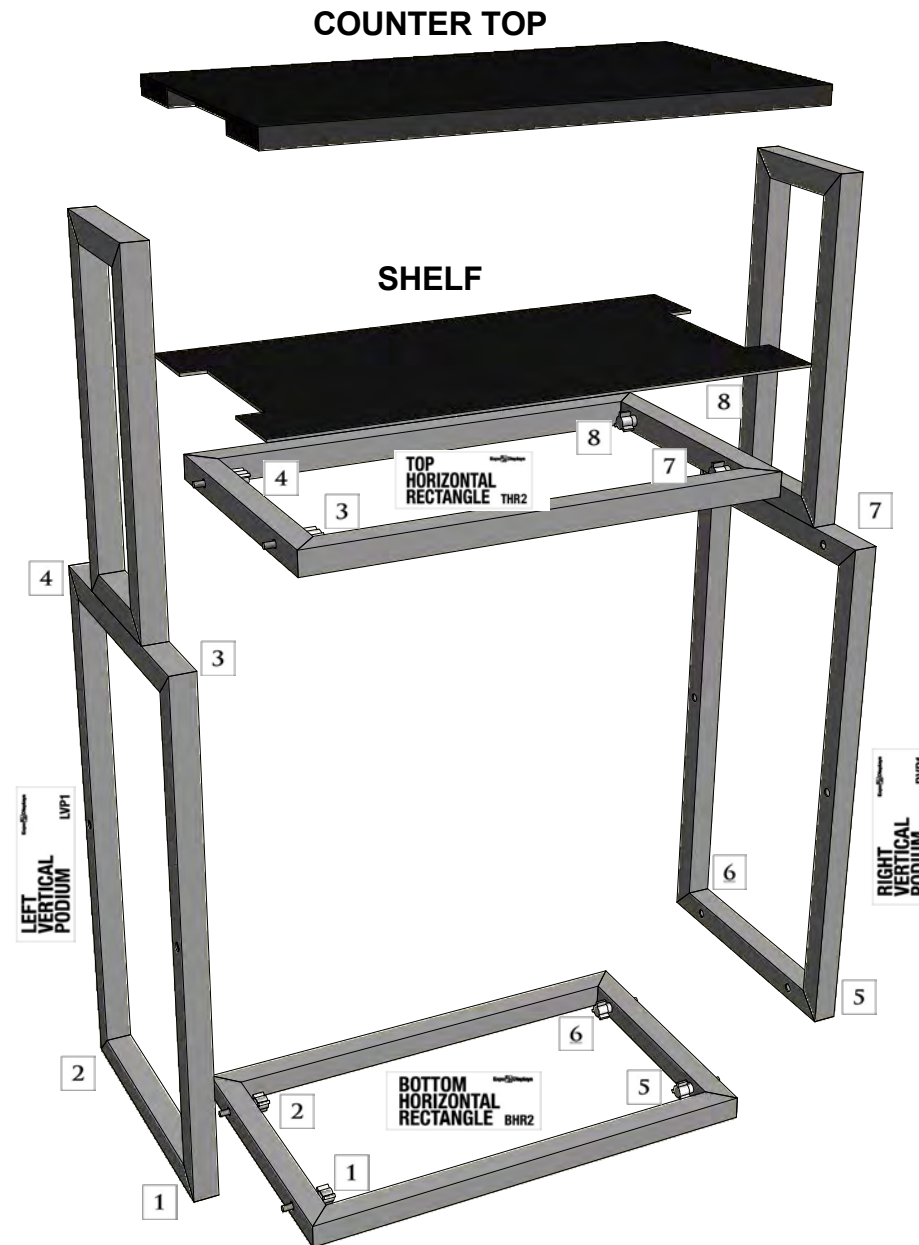


2nd Step

ATTACH THE PODIUM COUNTERTOP AND THE PODIUM SHELF



MATCH NUMBERS TO CONSTRUCT



Expo Displays

3401 Mary Taylor Road  
Birmingham, Alabama 35235  
(205) 439-8200

Drawn By: AKHIII

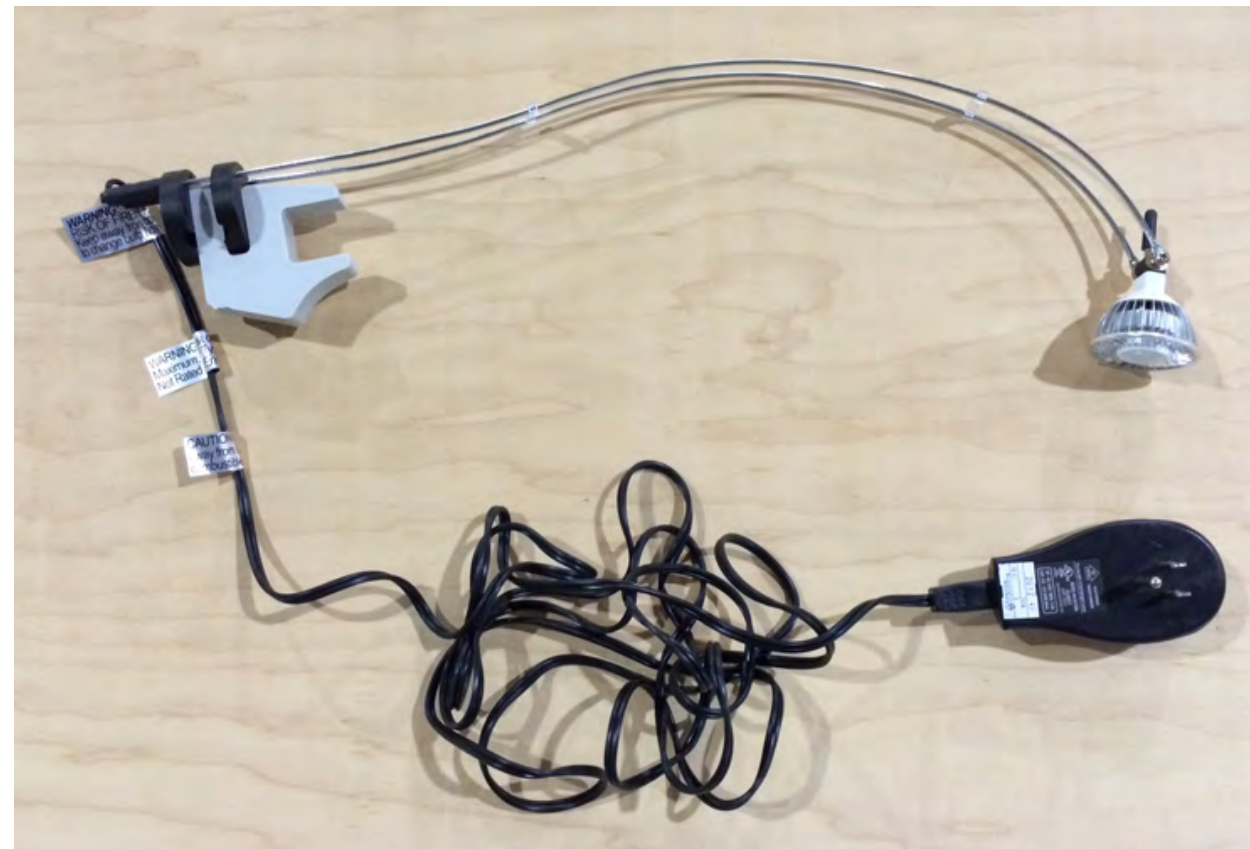
THIS PART USED TO MAKE  
**MQ-POD1**  
1x1 PODIUM

ASSEMBLY INSTRUCTIONS

1x1 STAND  
MQ-POD1

APPENDIX F





WAVE STEM LIGHT (FULLY ASSEMBLED)



WAVE STEM LIGHT (INSTALLED)



WAVE STEM LIGHT (INSTALLED - CLOSE UP)

Sheet Title

**ASSEMBLY  
INSTRUCTIONS**

**WAVE STEM LIGHT**