

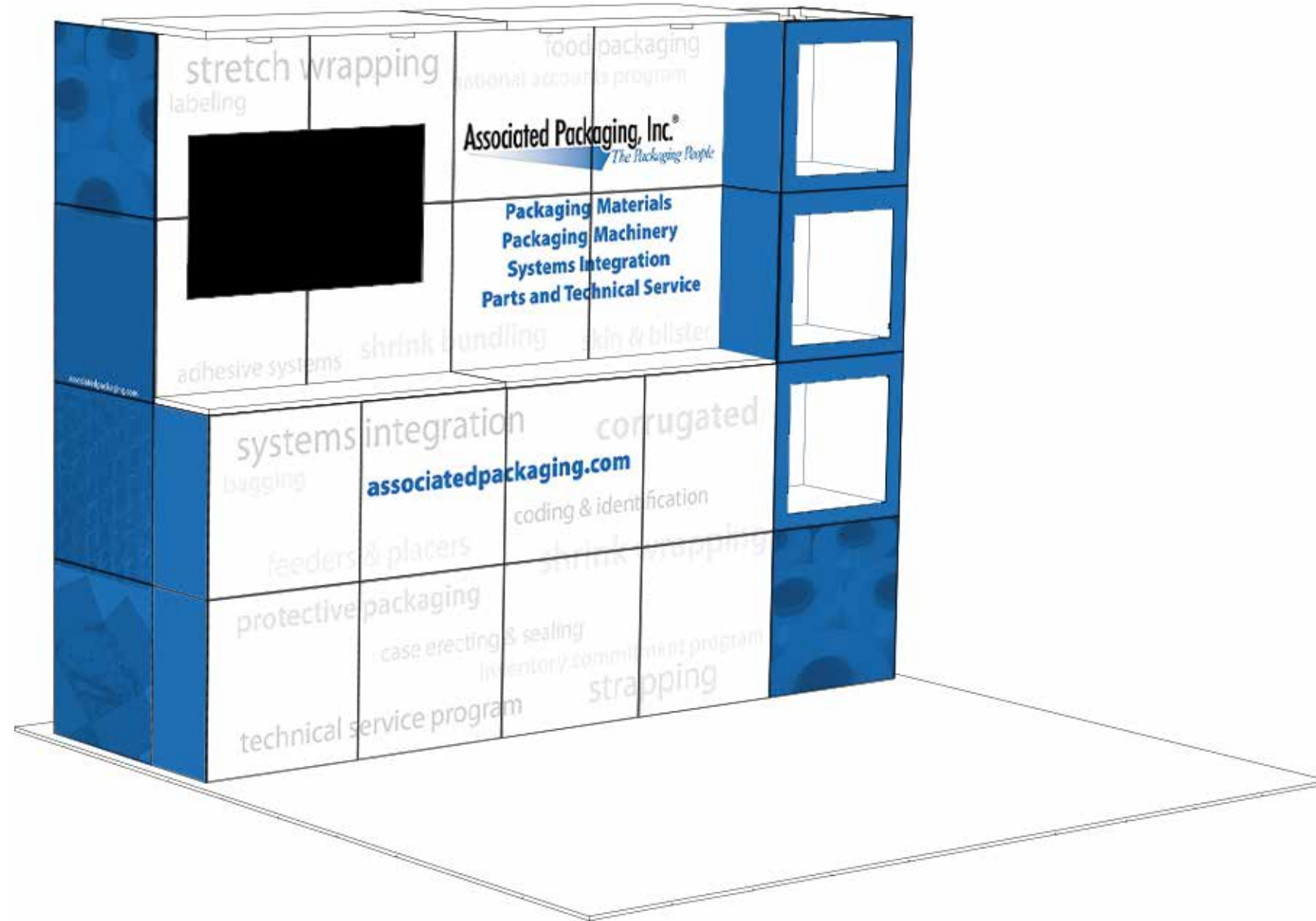
WHEN ASSEMBLING **EX PO MultiQuad**<sup>®</sup>

REMEMBER YOUR **ABC**'s...

**A**SSEMBLE EACH COMPONENT SEPARATELY

**B**UILD THE DESIRED LAYOUT

**C**OVER YOUR MULTIQUAD LAYOUT WITH QUADS



**EX PO MultiQuad**<sup>®</sup>  
An **ExpoDisplays** Product

**Associated Packaging**  
10 x 10 Custom MultiQuad<sup>®</sup>



**Expo EX PO Displays**<sup>®</sup>  
A Division of Diamond Displays International

3401 Mary Taylor Road  
Birmingham, Alabama 35235  
(205) 439-8200

Project Title

10x10 MULTIQUAD<sup>®</sup>

Sheet Title

**ASSEMBLY  
INSTRUCTIONS  
COVER SHEET**



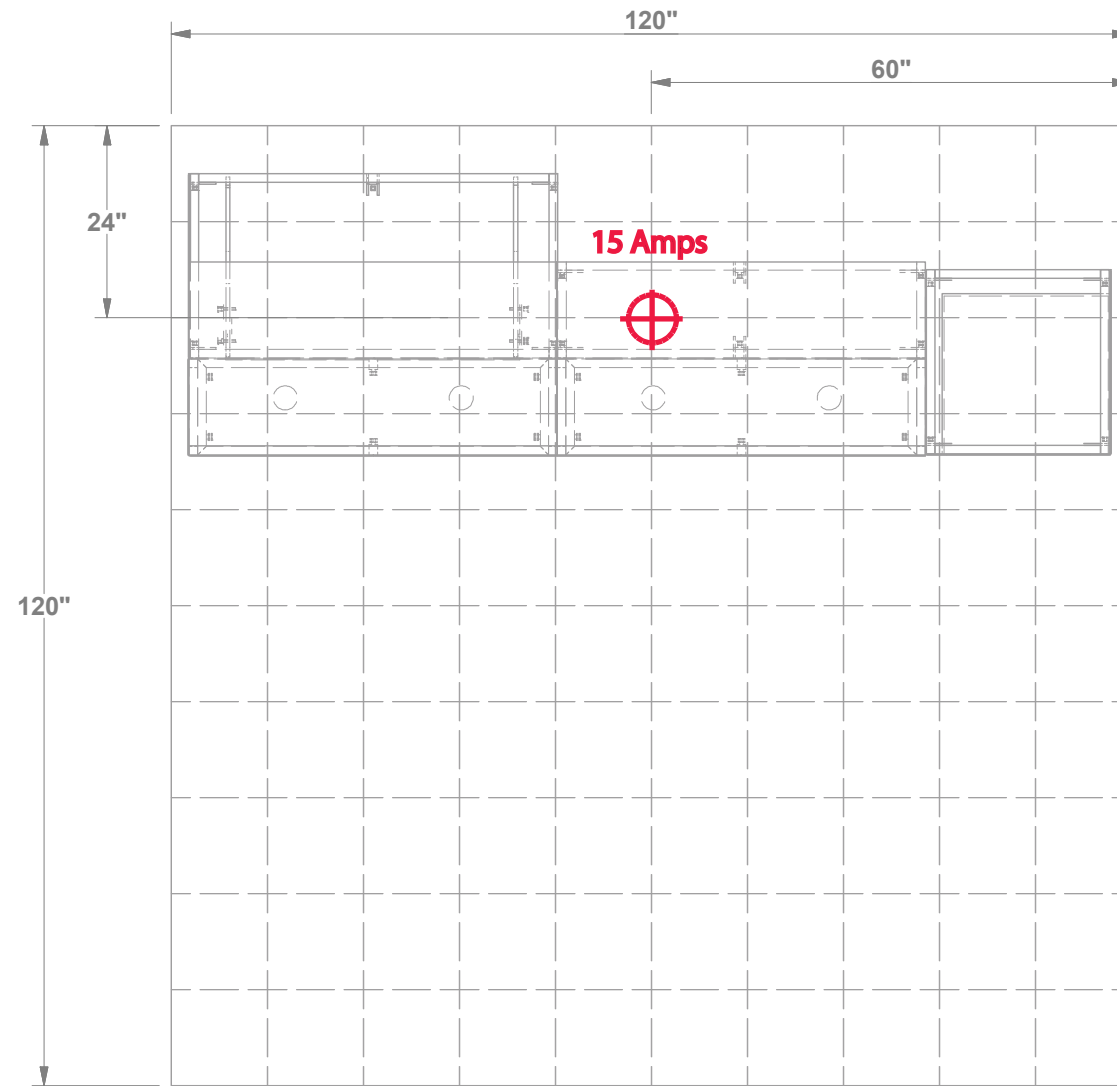
Project Title

**10x10 MULTIQAD®**

Sheet Title

**ASSEMBLY INSTRUCTIONS  
ELECTRICAL PLAN**

BOOTH # \_\_\_\_\_



**TOP VIEW**

BOOTH # \_\_\_\_\_

FRONT OF DISPLAY

BOOTH # \_\_\_\_\_

BOOTH # \_\_\_\_\_

1 Square = 1'- 0"

SHOW: \_\_\_\_\_

BOOTH: \_\_\_\_\_



MAIN ELECTRICAL DROP



ELECTRICAL OUTLET



POWER CORDS RUN UNDER CARPET



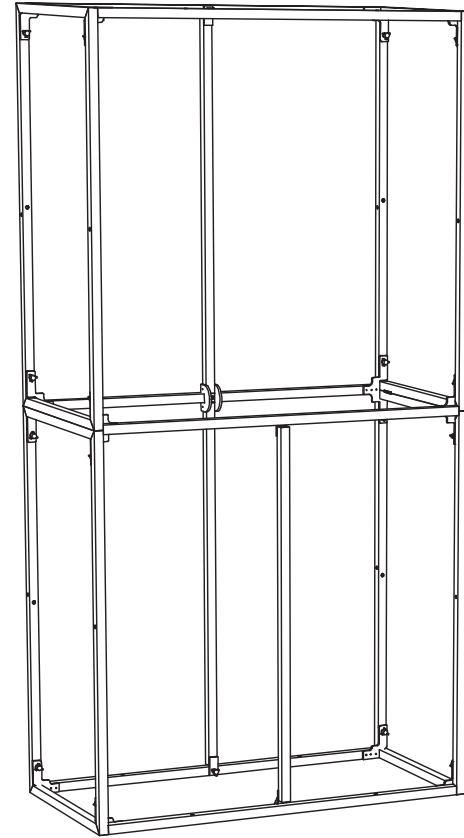
Project Title

10x10 MULTIQAD®

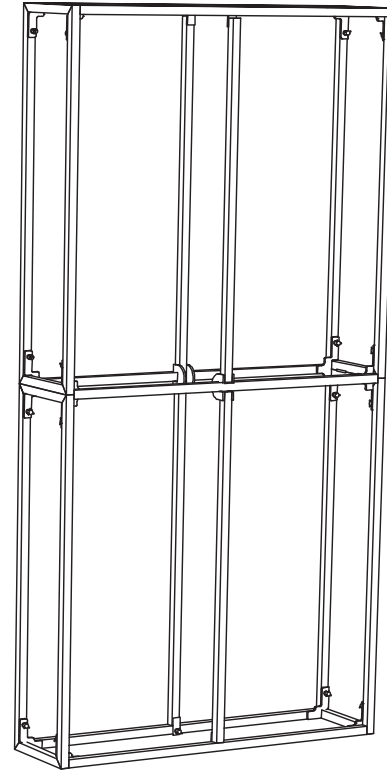
Sheet Title

**ASSEMBLY  
INSTRUCTIONS  
EXPLODED LAYOUT**

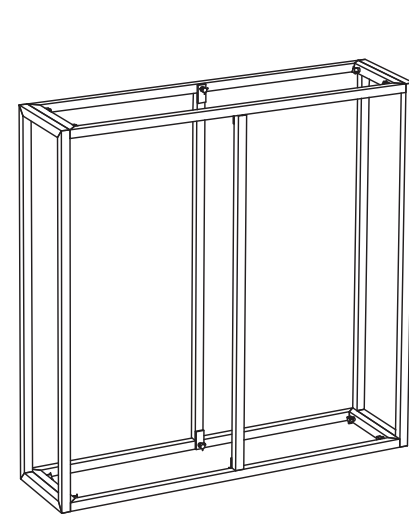
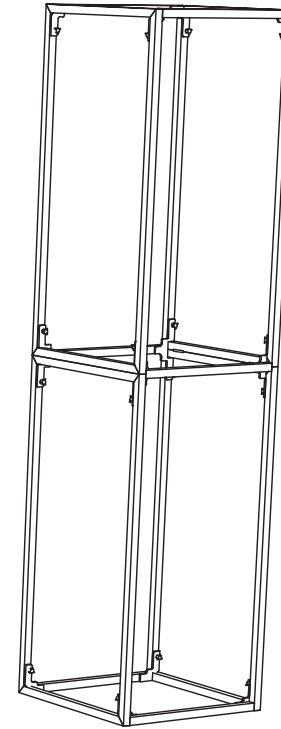
MAX FRAME  
(SEE APPENDIX J6)



STANDARD FRAME  
(SEE APPENDIX B)



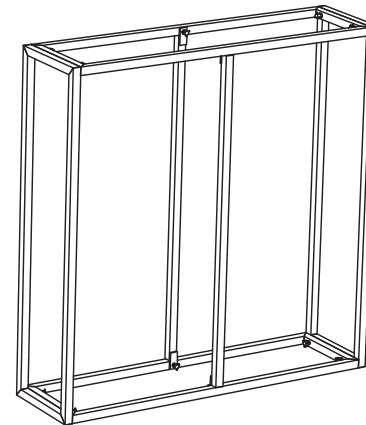
MAX FRAME  
(SEE APPENDIX N)



STANDARD FRAME  
(SEE APPENDIX E)

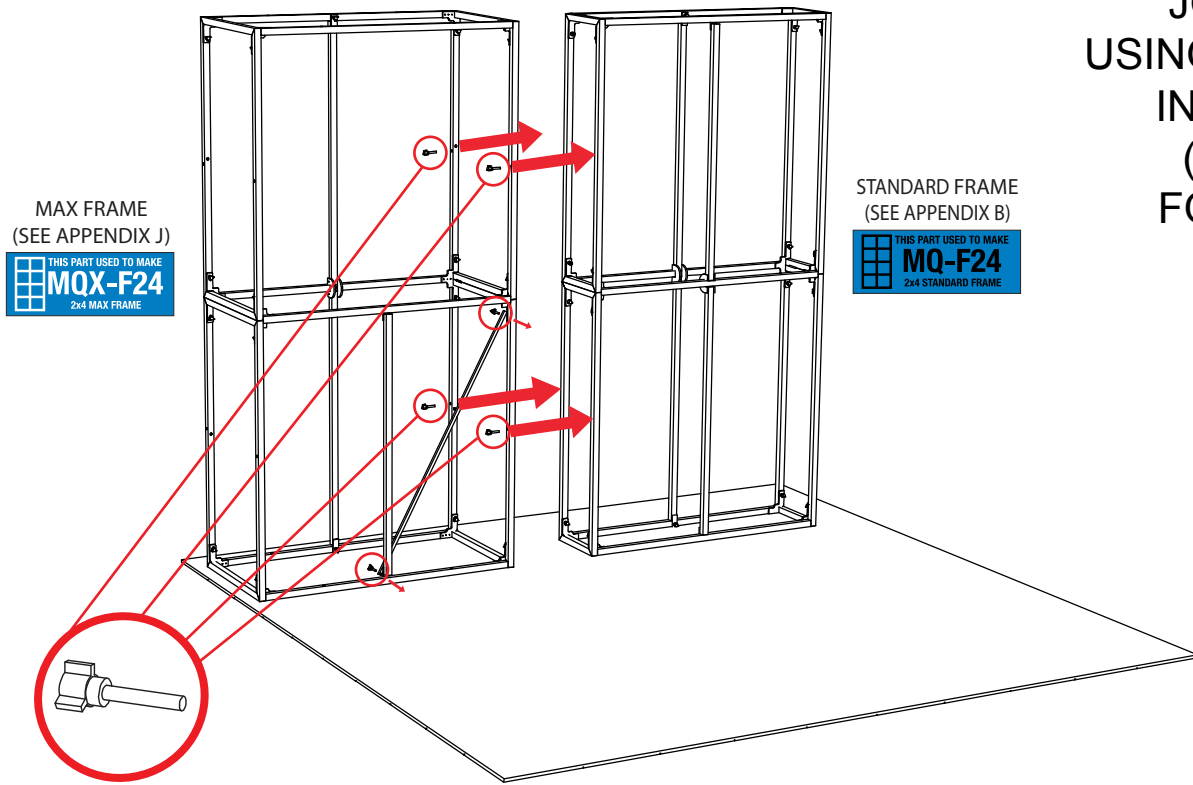


STANDARD FRAME  
(SEE APPENDIX E)

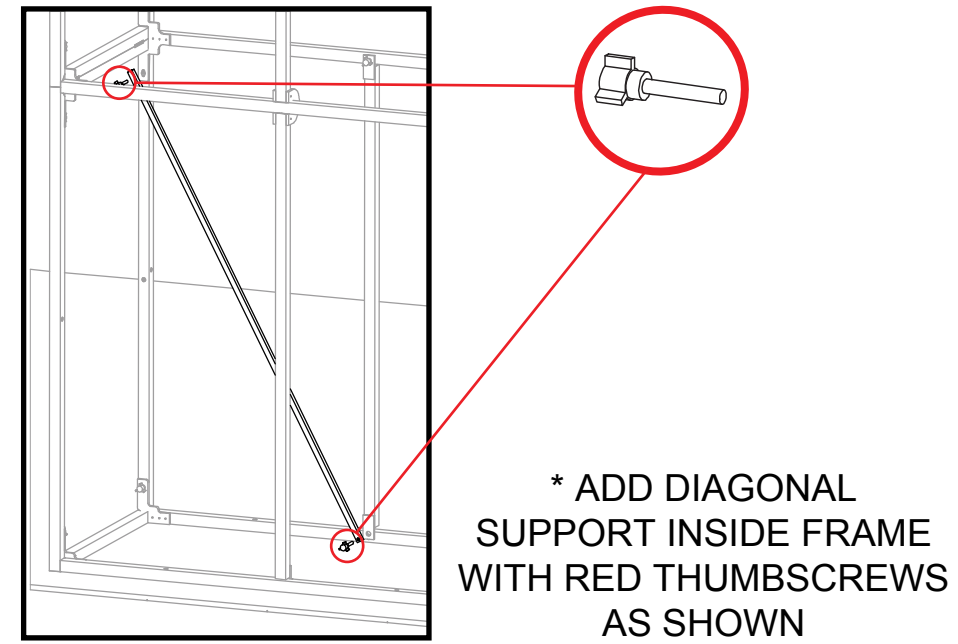


( KEEP TOP  
SECTION OPEN )

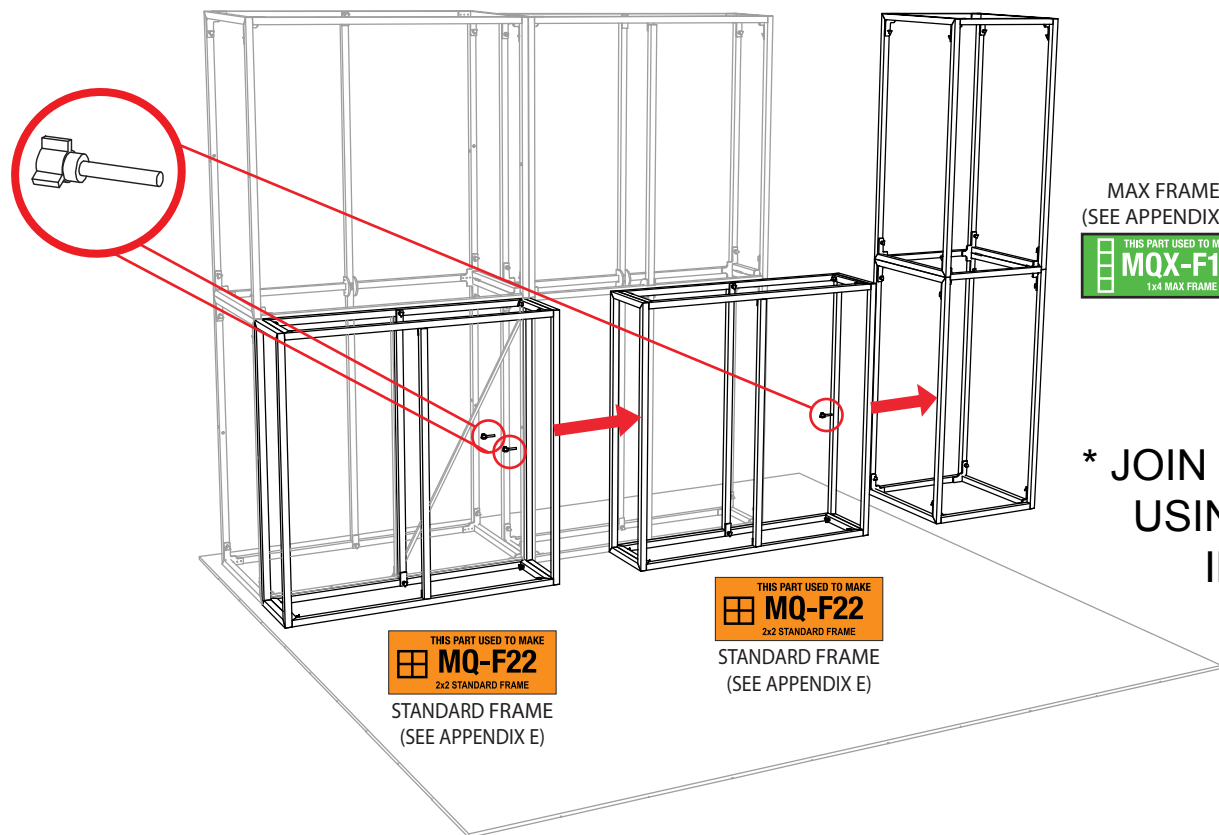
\* ASSEMBLE ALL LISTED FRAMES  
SEPARATELY USING APPENDIX PAGES



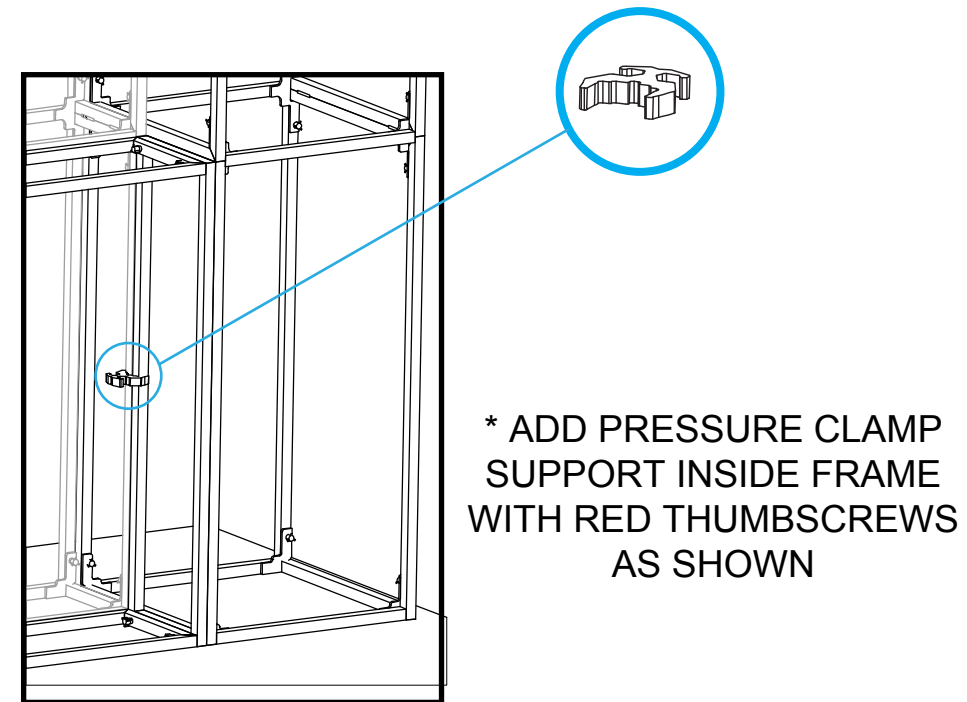
\* JOIN LISTED FRAMES USING RED THUMBSCREWS IN THREADED HOLES ( SEE APPENDIX A FOR ADD'L DETAILS )



\* ADD DIAGONAL SUPPORT INSIDE FRAME WITH RED THUMBSCREWS AS SHOWN



\* JOIN LISTED FRAMES IN FRONT USING RED THUMBSCREWS IN THREADED HOLES



\* ADD PRESSURE CLAMP SUPPORT INSIDE FRAME WITH RED THUMBSCREWS AS SHOWN



**Expo EX PO Displays**  
A Division of Diamond Displays International

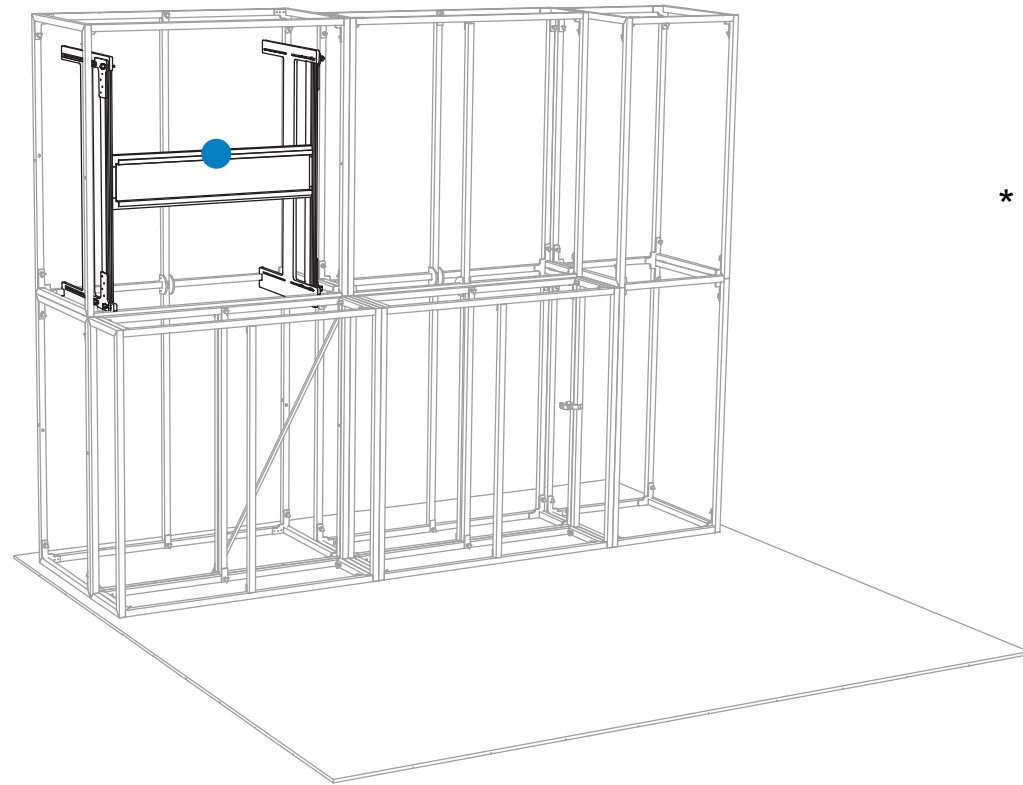
3401 Mary Taylor Road  
Birmingham, Alabama 35235  
(205) 439-8200

Project Title

10x10 MULTIQAD®

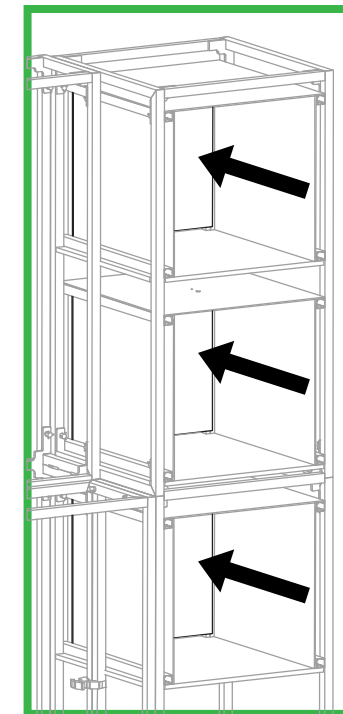
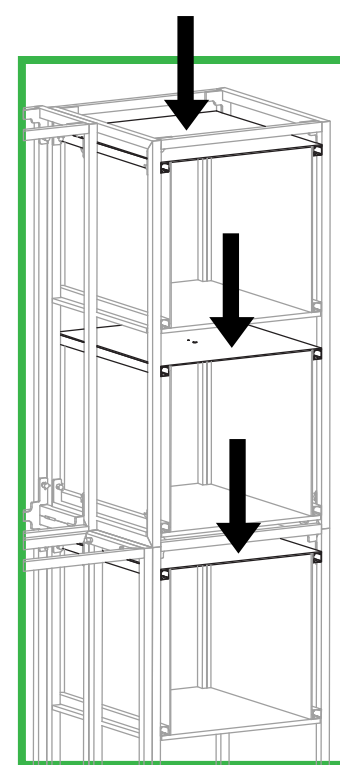
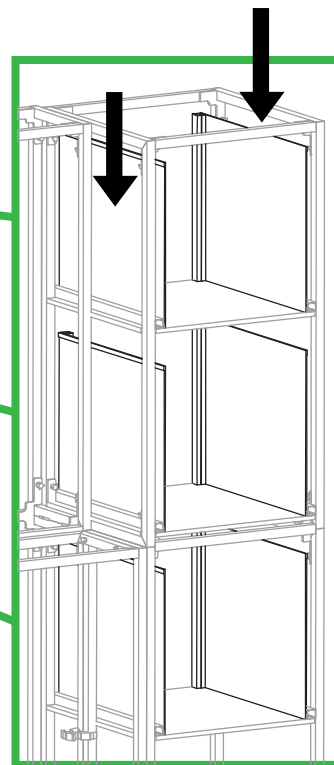
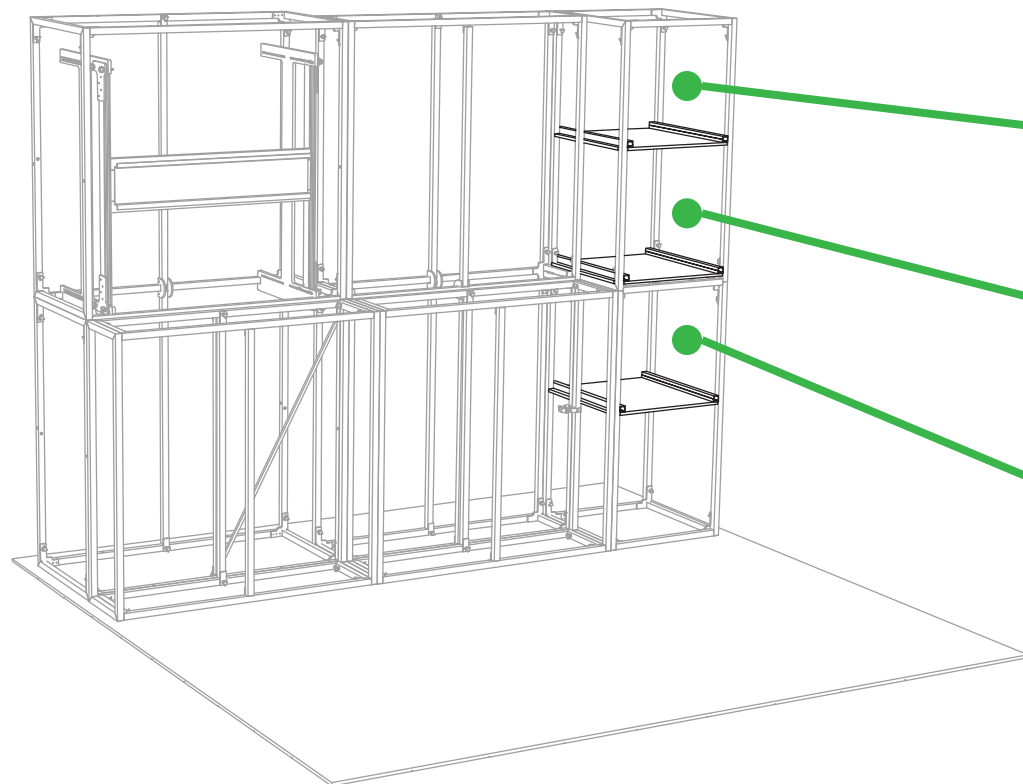
Sheet Title

**ASSEMBLY INSTRUCTIONS**  
**MAIN WALL / COUNTER ASSEMBLY**

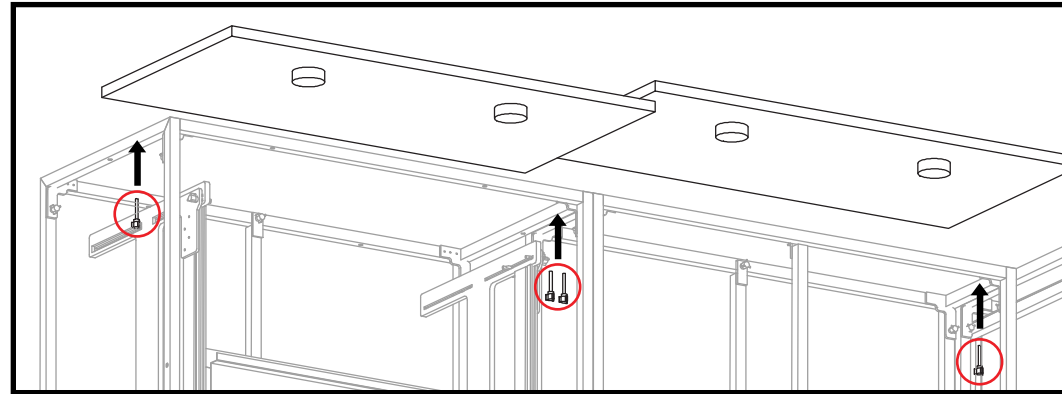
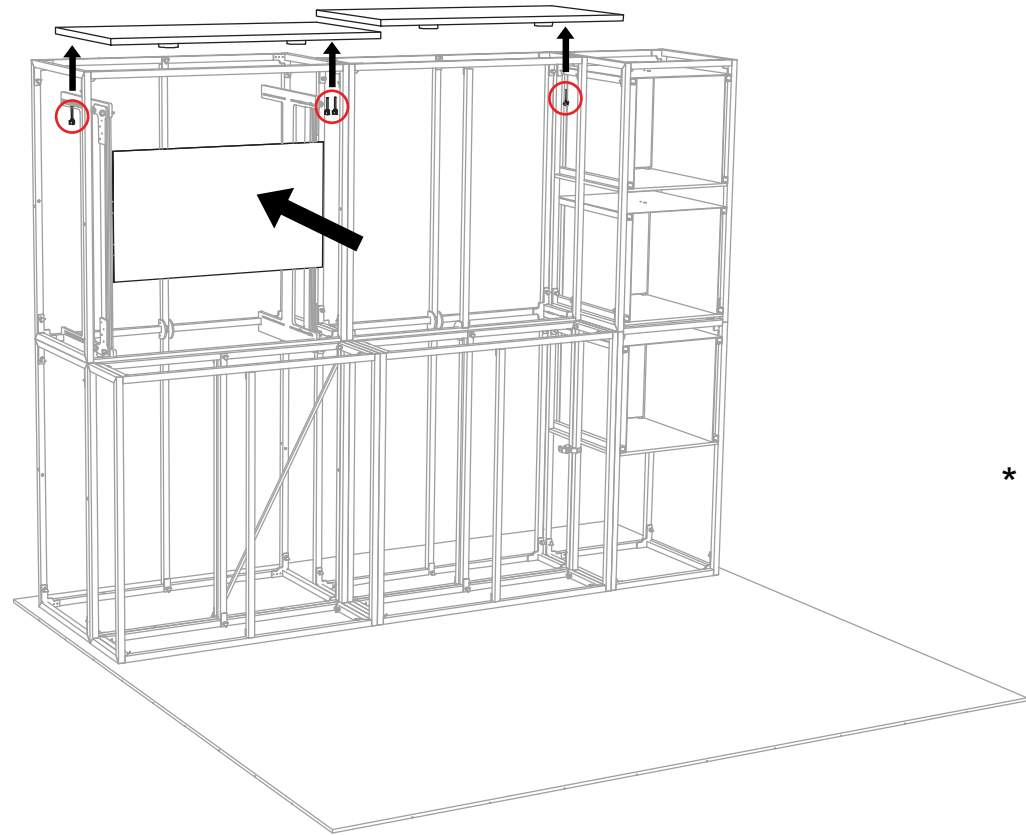


\* ASSEMBLE ( 1 ) TV MOUNT  
INSIDE TOWER  
USING APPENDIX J - 7

\* PLACE ( 3 ) SHELVES  
INSIDE RIGHT TOWER

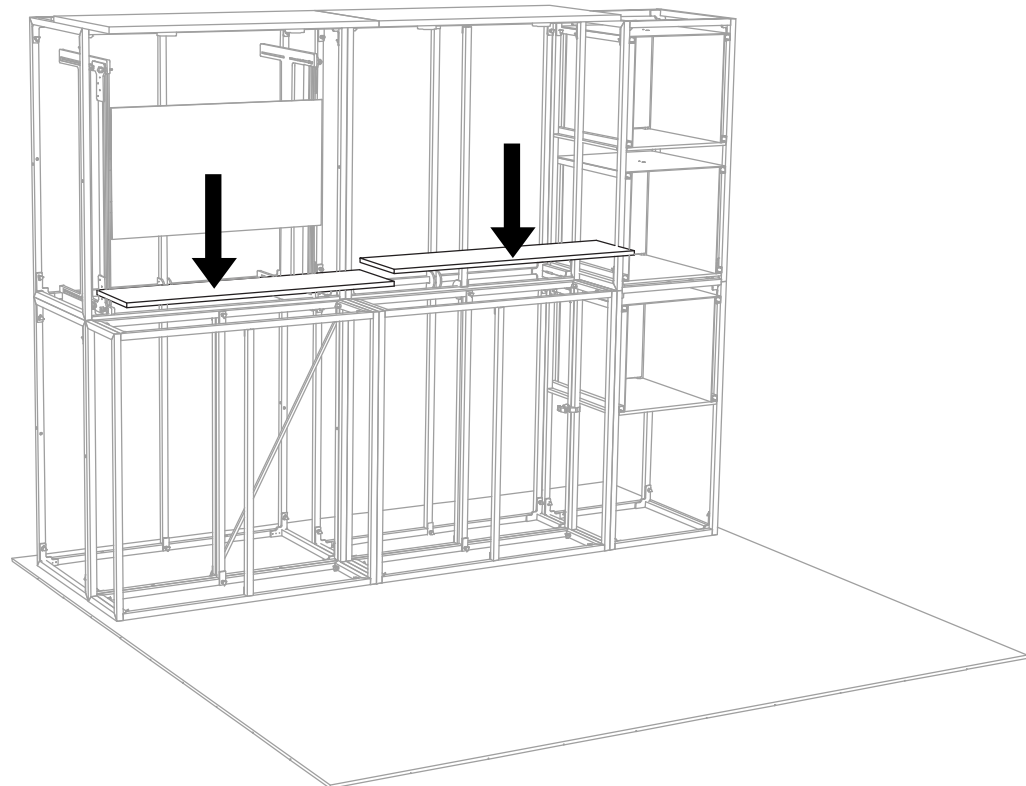


\* ASSEMBLE ( 3 ) SINGLE SHOWCASES  
USING APPENDIX H - 1



\* SECURE ( 2 ) 23 X 46 CANOPIES TO THE TOP OF FRAMES WITH ( 4 ) BLACK THUMBSCREWS IN THREADED HOLES ( SEE APPENDIX C -1 FOR ADD'L DETAILS )

\* HANG TV ON MOUNT INSIDE FRAME WITH PROVIDED HARDWARE



\* PLACE ( 2 ) 12 X 46 COUNTERTOPS ON TOP OF FRAMES IN FRONT OF WALL

\* USE GRAPHIC LAYOUT ON NEXT PAGE TO ADD QUADS TO FRAMEWORK



**Expo EX PO Displays**  
A Division of Diamond Displays International

3401 Mary Taylor Road  
Birmingham, Alabama 35235  
(205) 439-8200

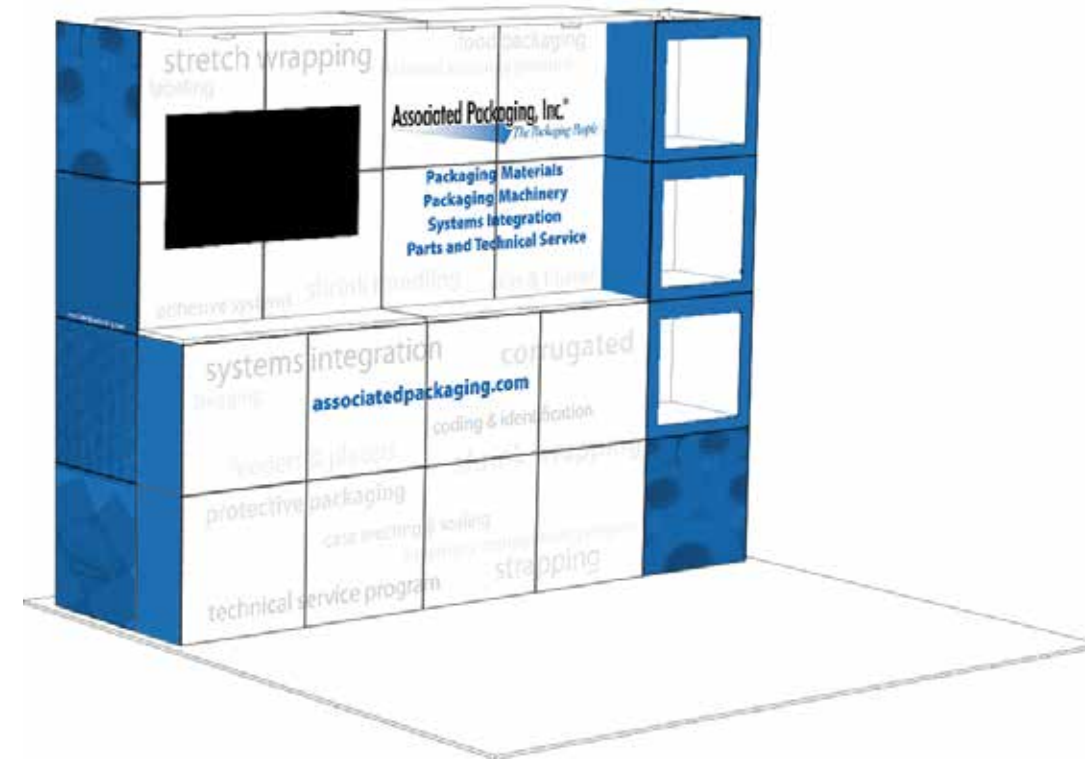
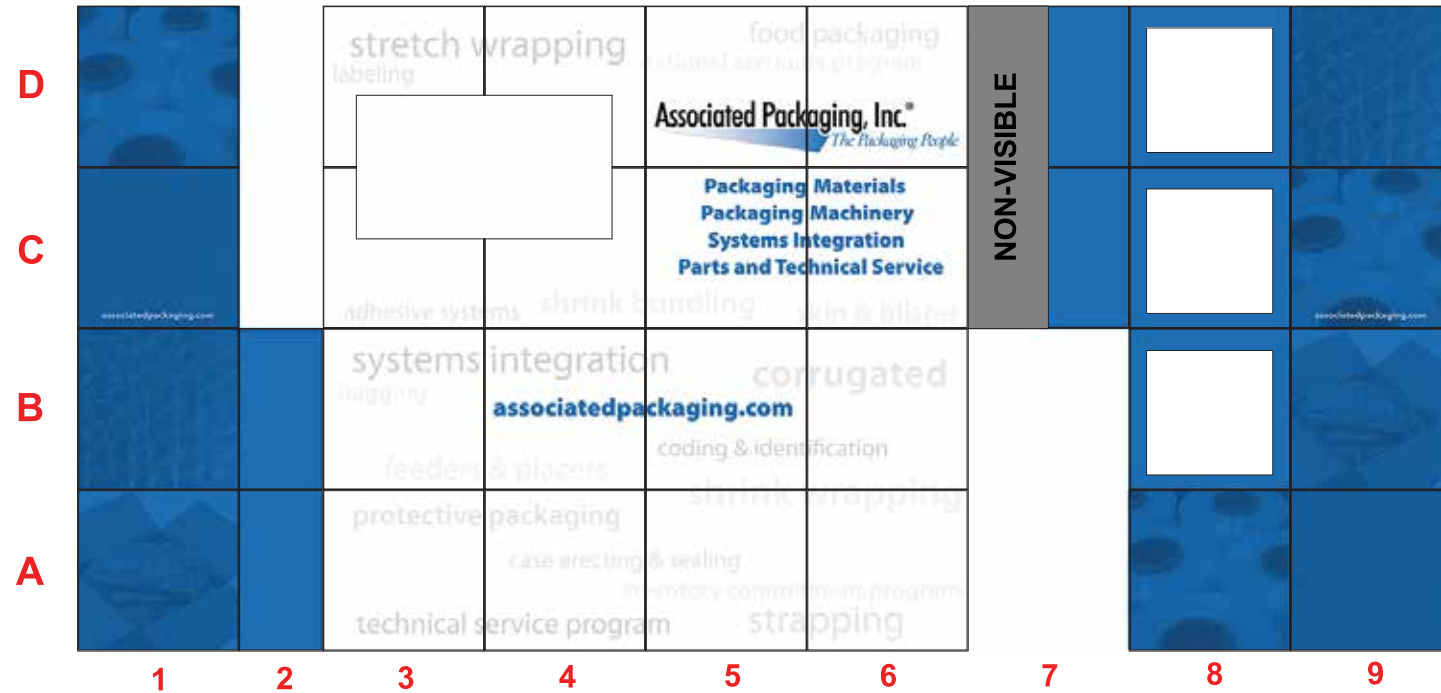
Project Title

10x10 MULTIQAD®

Sheet Title

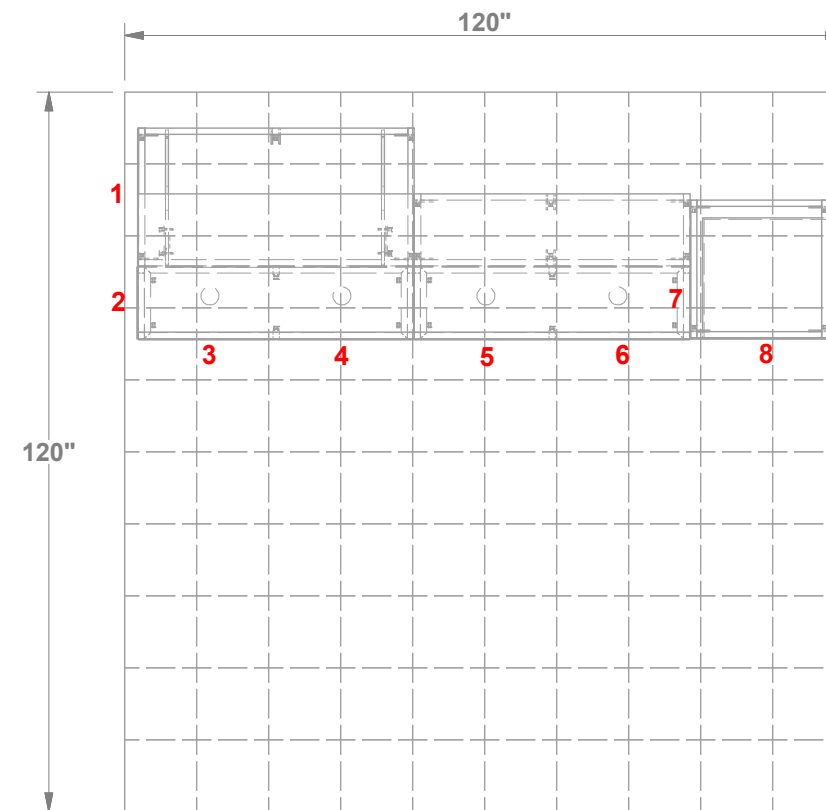
**ASSEMBLY  
INSTRUCTIONS  
CANOPY /  
COUNTERS**

**FLATTENED ELEVATED VIEW**



**PERSPECTIVE VIEW**

PARTS LIST:		
QTY	SIZE	NAME
23	23 X 23	STANDARD QUAD
3	23 X 23	SHOWCASE QUAD
2	12.125 X 23	SIDE QUAD
2	23 X 46	DOUBLE QUAD VERTICAL HINGED



**TOP VIEW**



**Expo EXPO Displays**  
A Division of Diamond Displays International

3401 Mary Taylor Road  
Birmingham, Alabama 35235  
(205) 439-8200

Job #: 70183

Project Title

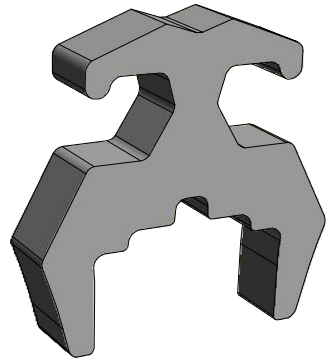
**10x10 MULTIQAD®**

Sheet Title

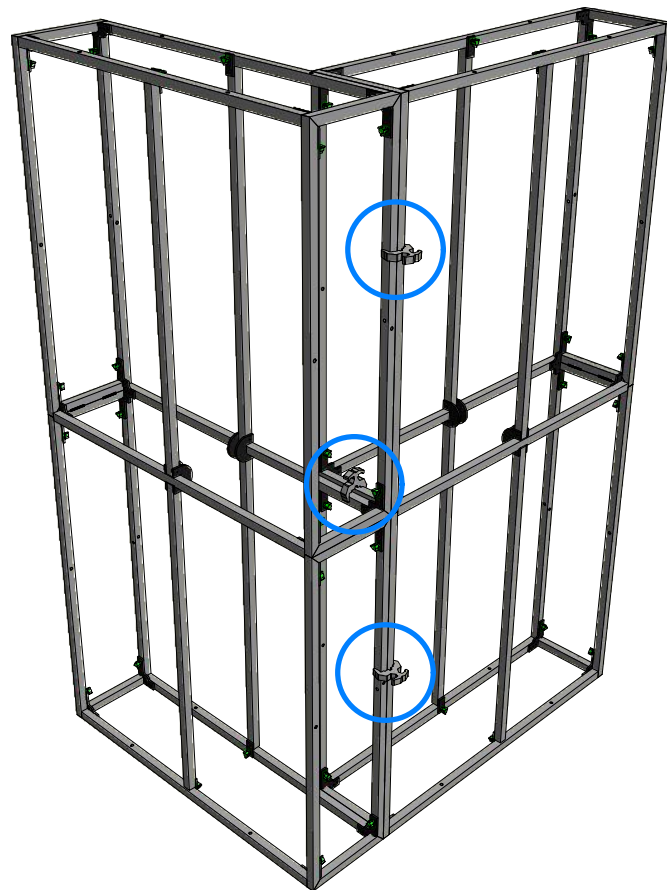
**ASSEMBLY  
INSTRUCTIONS  
GRAPHIC LAYOUT**

**FRAME CLAMP INSTRUCTION  
MQ-CLMP**

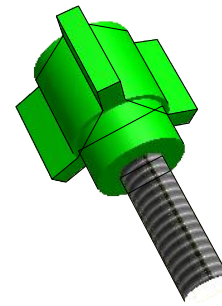
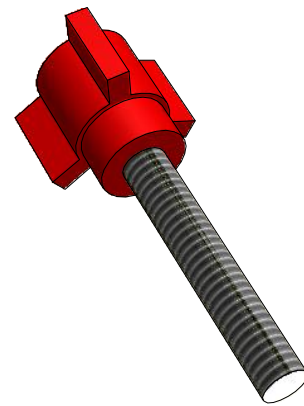
**(NOT REQUIRED IN EVERY CONFIGURATION)**



THE MQ-CLMP IS A FRICTION-FIT CONNECTOR / ALIGNMENT TOOL THAT DOES NOT REQUIRE TOOLS. THEY ARE TO BE USED IN ABNORMAL MULTIQUAD FRAME CONFIGURATIONS OR AS ADDITIONAL FRAME SECURITY IN SPECIAL SITUATIONS



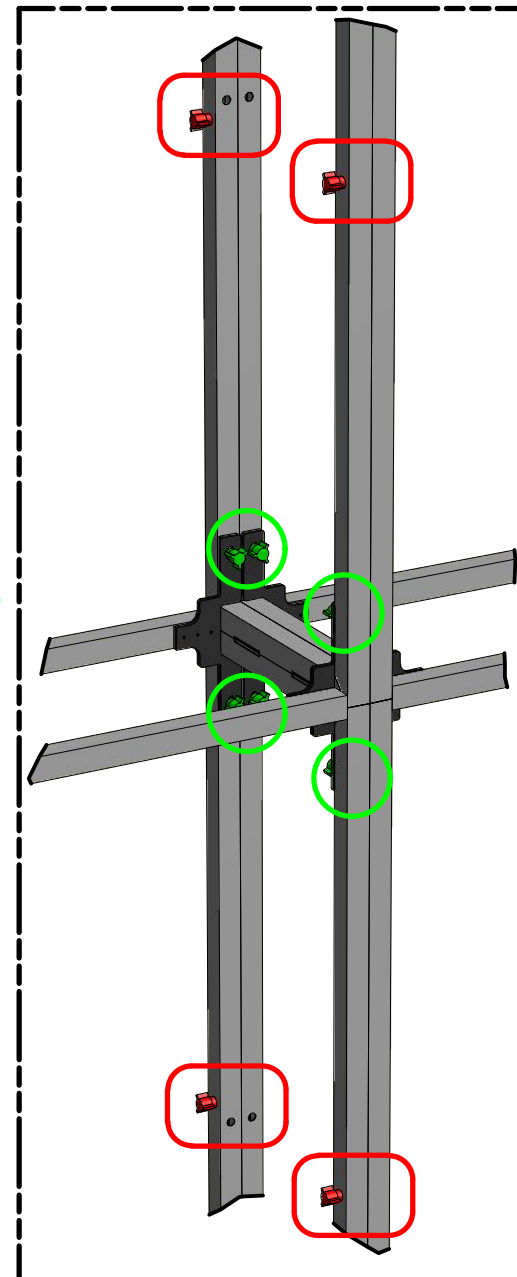
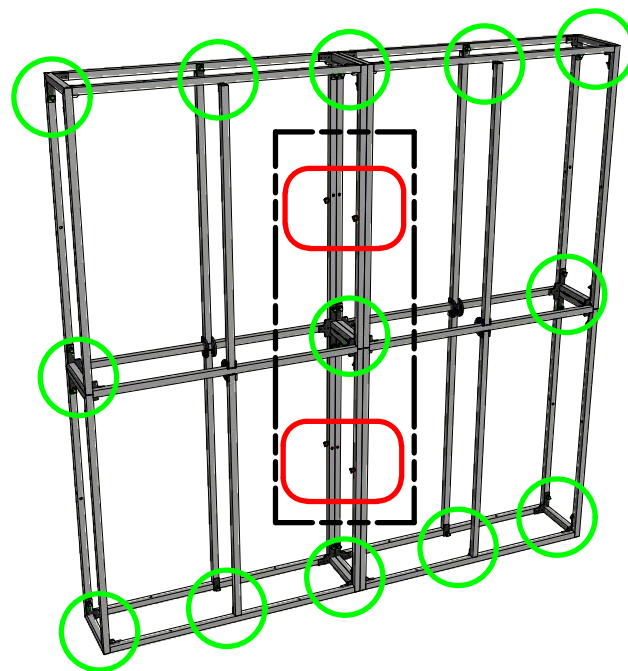
**THUMB SCREW INSTRUCTION  
MQ-TSR2 / MQ-TSG1**



THE 2" RED THUMB SCREW IS USED TO CONNECT MULTIQUAD FRAMES TO OTHER MULTIQUAD FRAMES. EACH FRAME HAS RIVET NUT ON ONE SIDE AND A HOLE ON THE OTHER TO ALLOW FRAME TO FRAME CONNECTION

THE 1" GREEN THUMB SCREWS ARE USED WHEN ASSEMBLING 1x4 AND 2x4 FRAMES. SEE APPENDIX PAGES

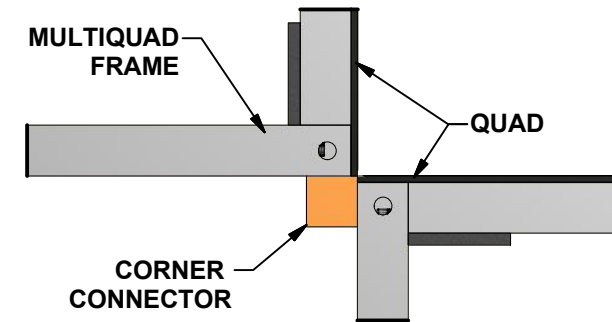
**DUE TO THE RIVET NUTS, ALL FRAMES HAVE A LEFT AND RIGHT SIDE. VERIFY FRAME ORIENTATION TO ALLOW FRAME TO FRAME CONNECTION**



**CORNER CONNECTOR INSTRUCTION  
MQ-BTW**

**(NOT REQUIRED IN EVERY CONFIGURATION)**

THE MQ-BTW CORNER ALIGNMENT TOOL IS DESIGNED TO AID IN THE ALIGNMENT OF FRAMES AS NEEDED IN SOME MULTIQUAD CONFIGURATIONS.



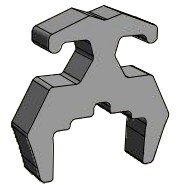
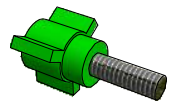
AFTER TWO MULTIQUAD FRAMES ARE SET "CORNER-TO-CORNER" THE MQ-BTW SIMPLY ATTACHES TO THE EXISTING MAGNETS ON THE FRAME



**Expo Displays**

3401 Mary Taylor Road  
Birmingham, Alabama 35235  
(205) 439-8200

Drawn By: AKHIII



**ASSEMBLY  
INSTRUCTIONS**

CONNECTORS & ALIGNMENT TOOLS

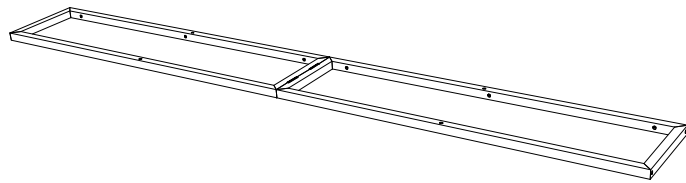
**APPENDIX A**



PARTS LIST		
QNTY	LABEL	NAME
1	LVH1	LEFT VERTICAL HINGED
1	RVH1	RIGHT VERTICAL HINGED
2	BH1	BOTTOM HORIZONTAL
2	MH1	MIDDLE HORIZONTAL
2	TH1	TOP HORIZONTAL
2	CVH1	CENTER VERTICAL HINGED
2	GRN	1" GREEN THUMB SCREW
4	RED	2" RED THUMB SCREW

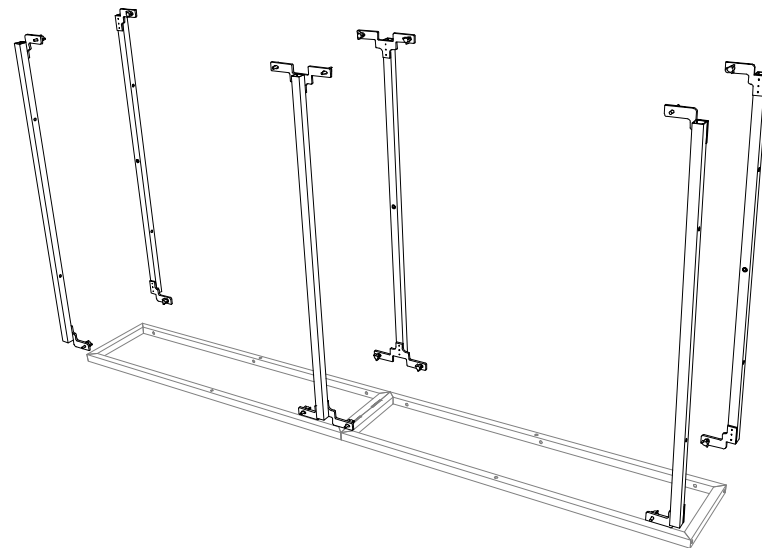
1st Step

START WITH THE LEFT VERTICAL HINGED (LVH1) ON THE GROUND



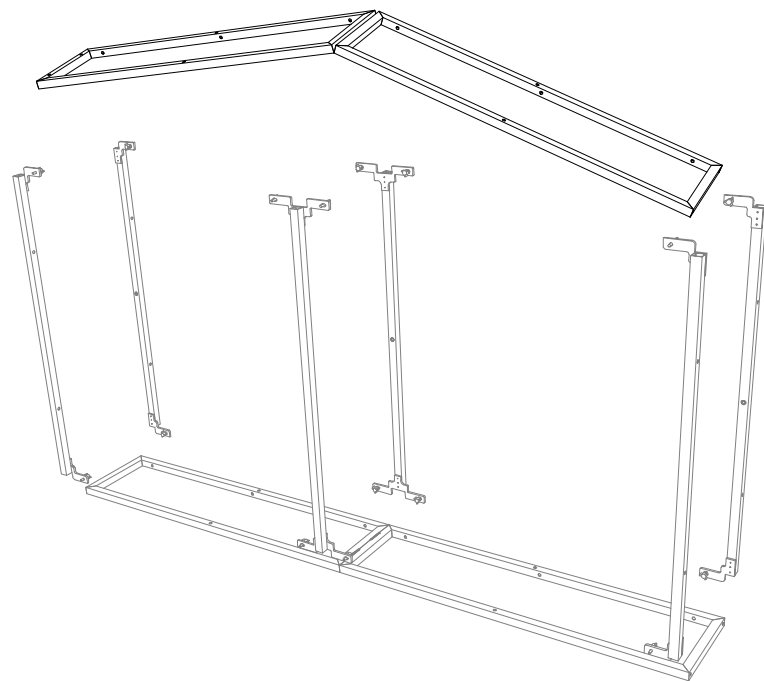
2nd Step

ATTACH THE (2) TOP HORIZONTAL (TH1), THE (2) MIDDLE HORIZONTAL (MH1), AND THE (2) BOTTOM HORIZONTAL (BH1)



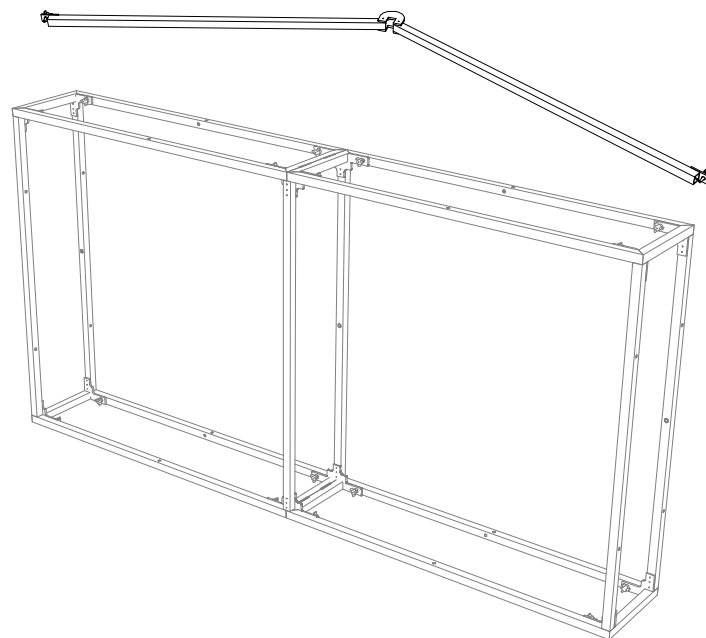
3rd Step

ATTACH THE RIGHT HINGED SIDE (RVH1)

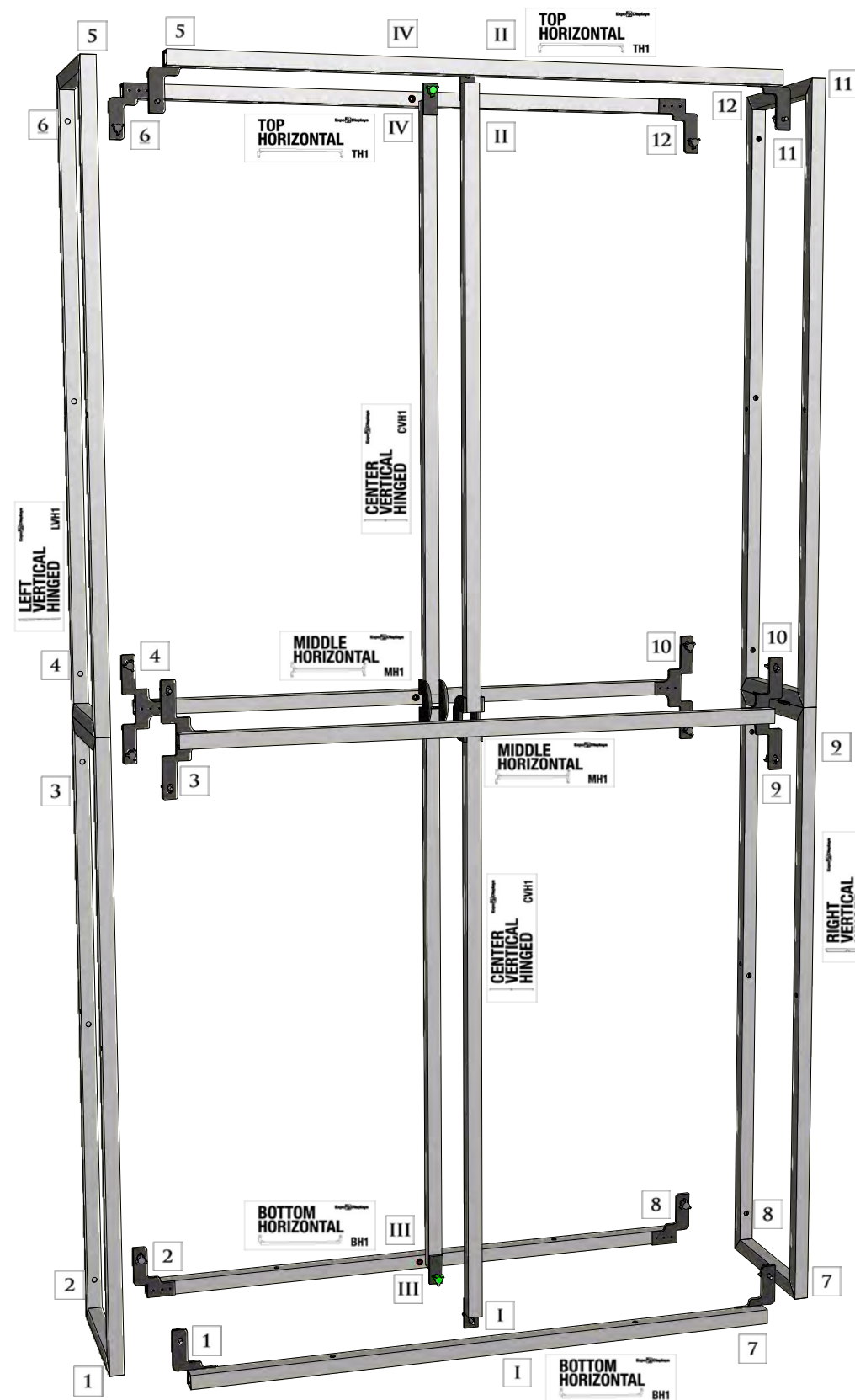


4th Step

ATTACH THE (2) CENTER VERTICAL HINGED (CVH1) AND STAND UP-RIGHT



MATCH NUMBERS TO CONSTRUCT



Expo Displays

3401 Mary Taylor Road  
Birmingham, Alabama 35235  
(205) 439-8200

Drawn By: AKHIII

THIS PART USED TO MAKE  
**MQ-F24**  
2x4 STANDARD FRAME

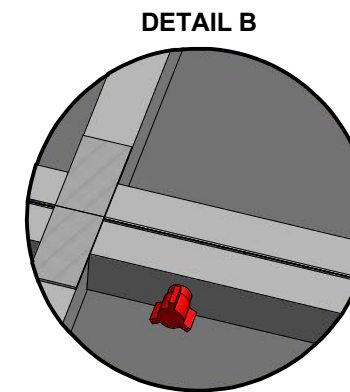
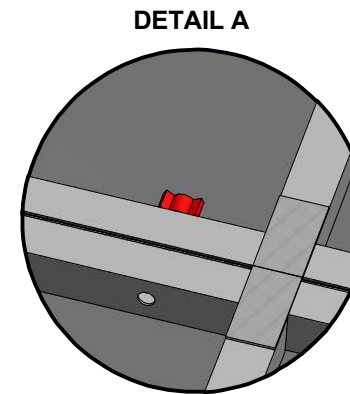
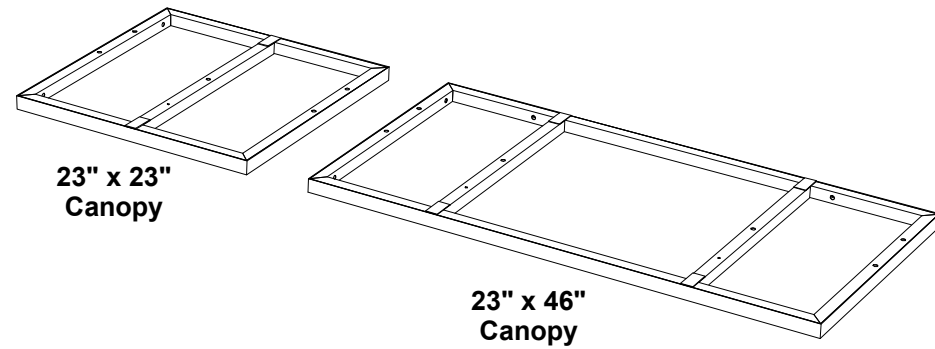
ASSEMBLY  
INSTRUCTIONS

2x4 STAN-AR FRAME  
MQ-F24

APPENDIX B

**1st Step)**

**DETERMINE WHAT SIZE CANOPY IS APPLIED TO FRAMEWORK. EACH CANOPY SIZE CAN BE APPLIED TO BOTH A STANDARD SIZE FRAME AND A MAX SIZE FRAME. THEY CAN ALSO BE ORIENTED IN A SINGLE-SIDED OR DOUBLE-SIDED PLACEMENT. DOUBLE-SIDED USES (2) CANOPIES CONNECTED TOGETHER.**



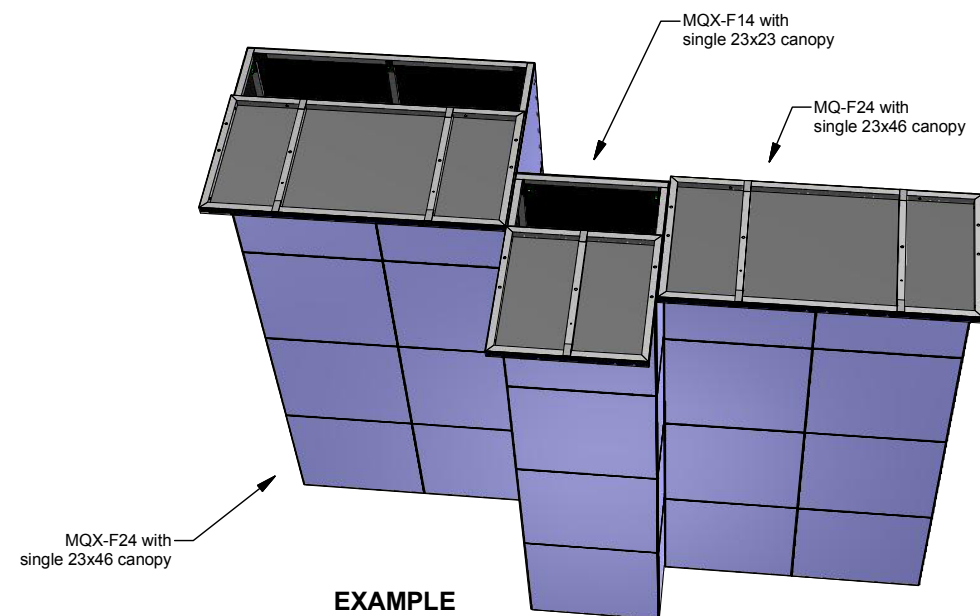
**2nd Step)**

**LOCATE THRU HOLES ON TOP OF MULTIQUAD FRAME. USE BLACK THUMB SCREWS AND BOLT CANOPY TO FRAME FROM UNDERNEATH. RUN ELECTRICAL WIRING FOR LIGHTS INTO CENTER OF FRAME AND PLUG INTO POWER SOURCE.**



**3rd Step)**

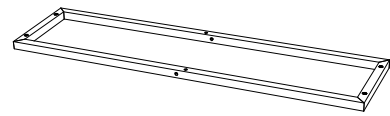
**IF CREATING A DOUBLE-SIDED CANOPY, FOLLOW STEP 1 & 2 FOR THE OPPOSITE SIDE. CONNECT (2) CANOPIES TOGETHER USING RED THUMB SCREWS.**



PARTS LIST		
QNTY	LABEL	NAME
1	LVR1	LEFT VERTICAL RECTANGLE
1	RVR1	RIGHT VERTICAL RECTANGLE
1	BHR1	BOTTOM HORIZONTAL RECT.
1	THR1	TOP HORIZONTAL RECT.
2	CVH2	CENTER VERTICAL HALF
2	GRN	1" GREEN THUMB SCREW
4	RED	2" RED THUMB SCREW
1	CT124	MQ-F22C COUNTERTOP

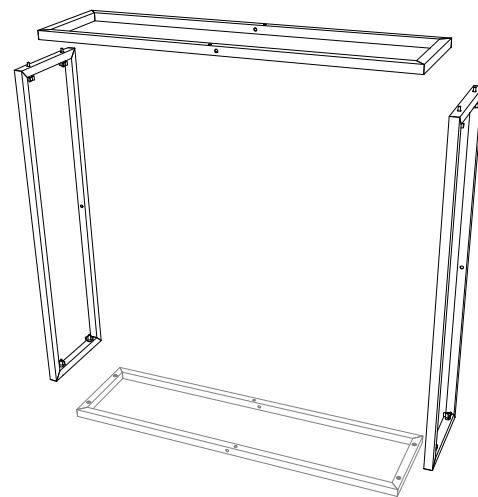
1st Step)

START WITH THE LEFT VERTICAL (LVR1) ON THE GROUND



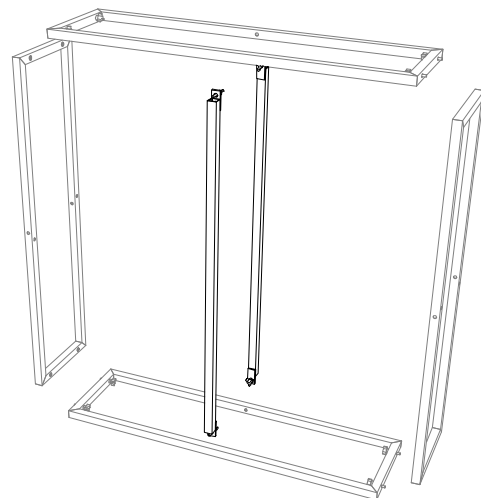
2nd Step)

ATTACH THE TOP HORIZONTAL (THR1), THE BOTTOM HORIZONTAL (BHR1), AND THE RIGHT VERTICAL (RVR1)



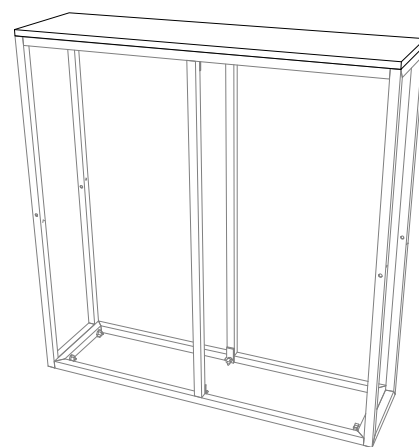
3rd Step)

ATTACH THE (2) CENTER VERTICAL (CVH2)

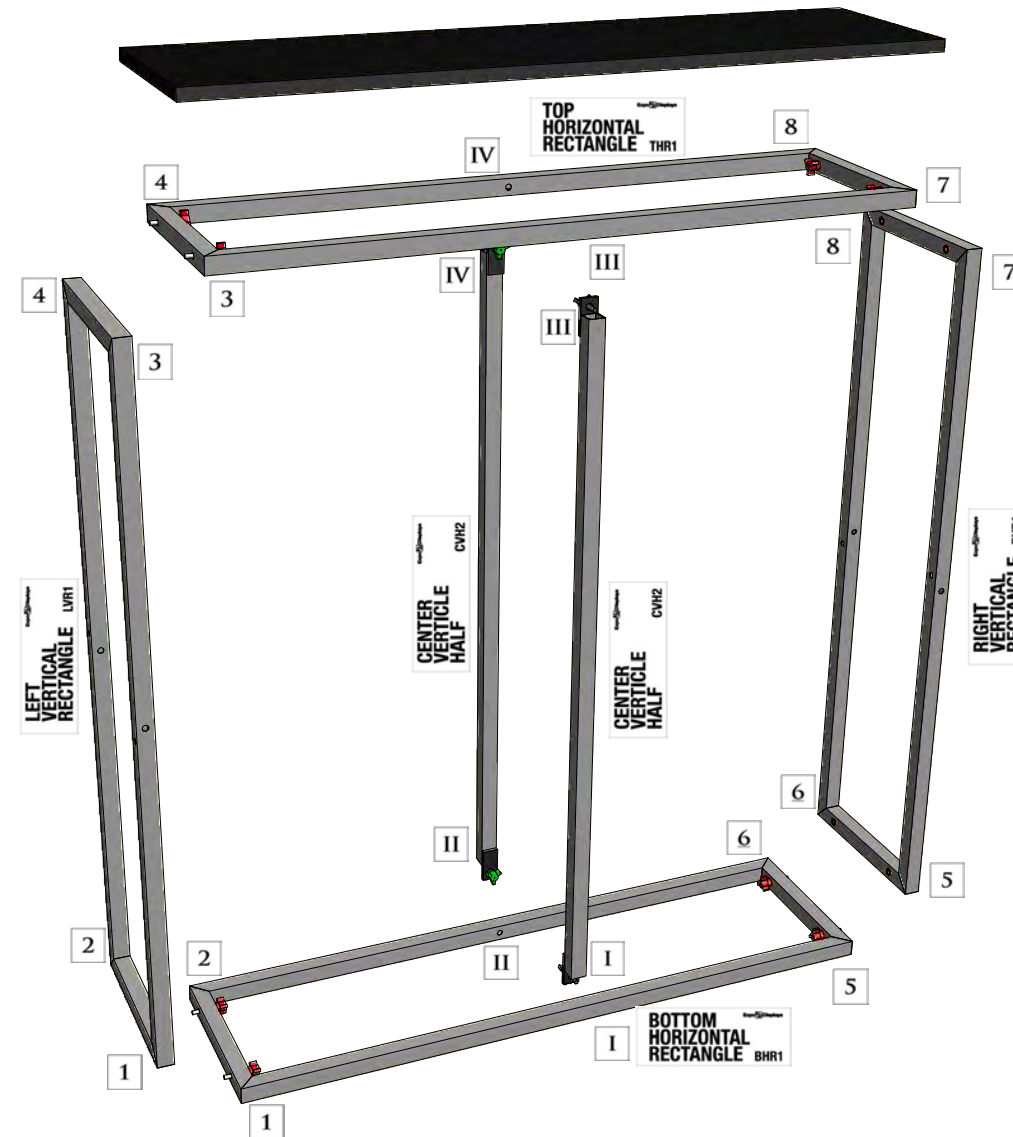


4th Step)

ATTACH THE COUNTERTOP



MATCH NUMBERS TO CONSTRUCT

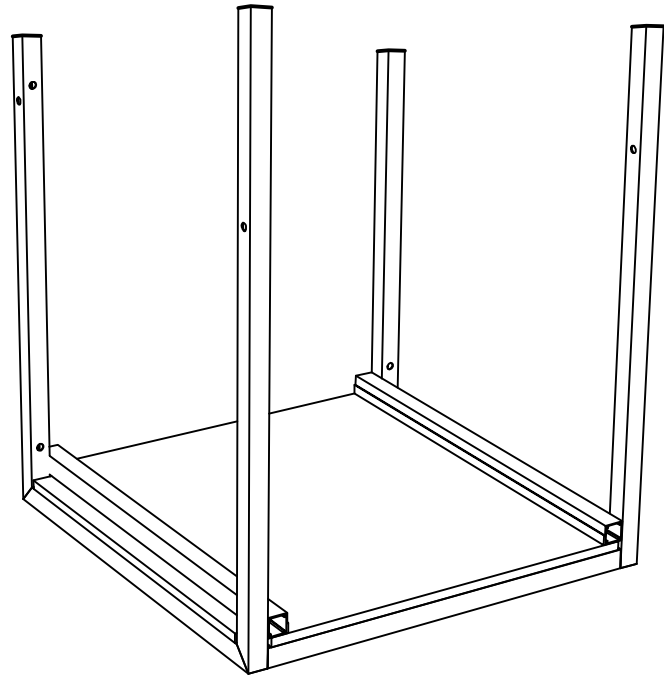


THIS PART USED TO MAKE  
**MQ-F22C**  
2x2 STANDARD COUNTER

ASSEMBLY  
INSTRUCTIONS  
2x2 STANDARD COUNTER  
MQ-F22C

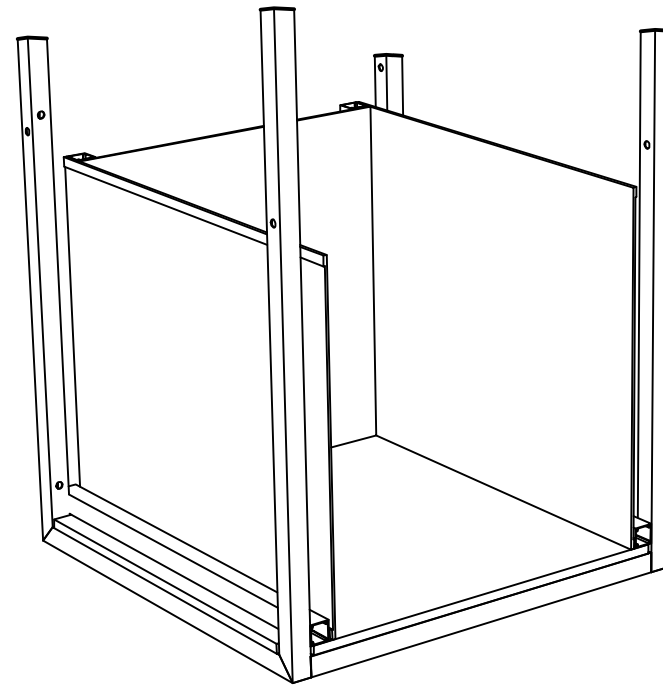
**1st Step)**

**START WITH PLACING SHELF IN PROPER LOCATION OF MULTIQUAD FRAMING.**



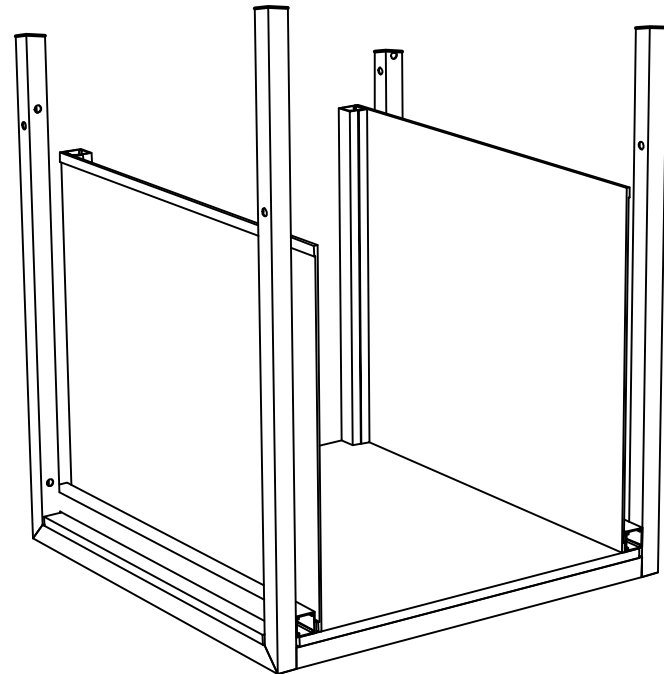
**3rd Step)**

**CONNECT BACK PANEL (PDK-BACK) TO BARS ON SIDE PANELS APPLIED IN STEP 2. BACK PANEL ATTACHES WITH MAGNET.**



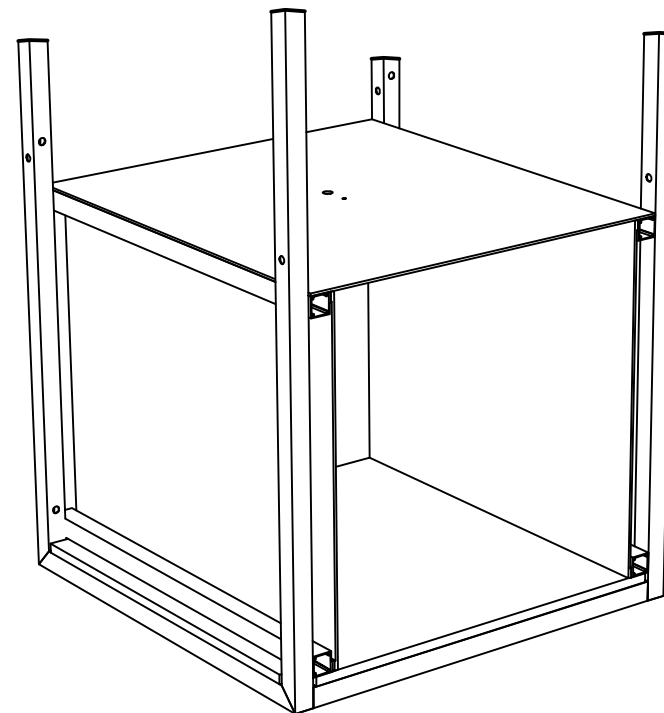
**2nd Step)**

**ATTACH 2 SIDE PANELS (PDK1-SIDE) TO SHELF BARS. PANELS ATTACH USING MAGNETS.**



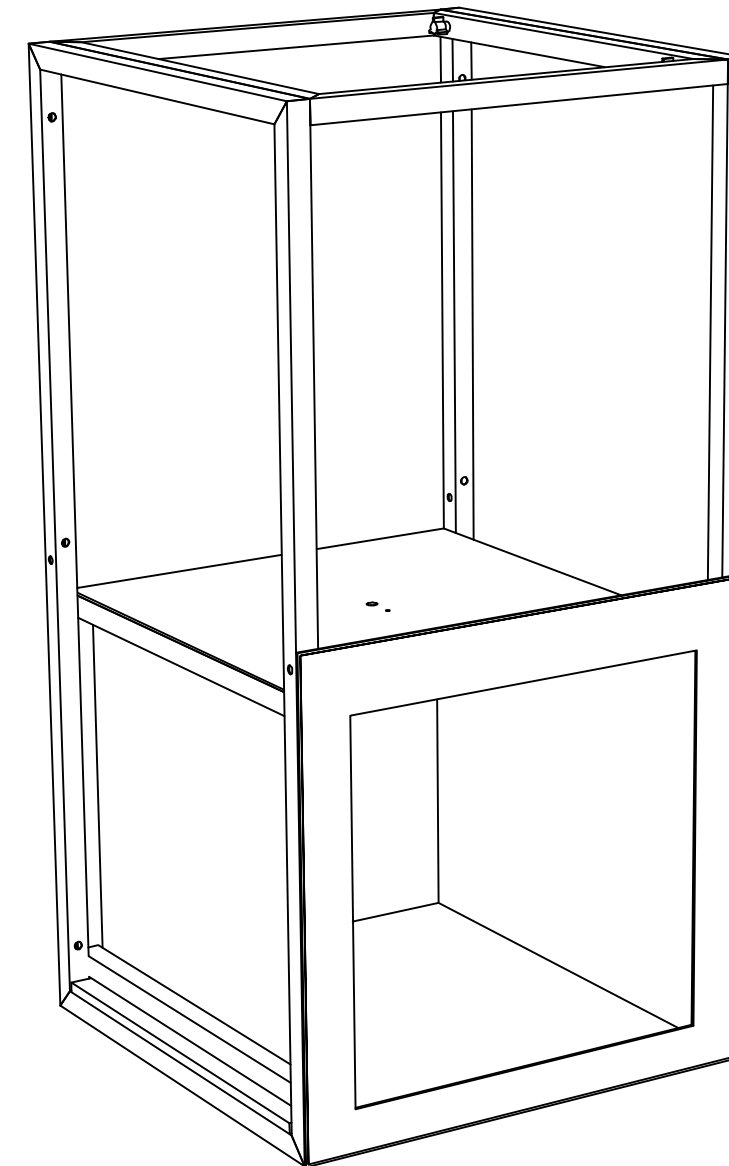
**4th Step)**

**ATTACH TOP PANEL WITH LIGHT TO SIDE PANELS. TOP PANEL ATTACHES WITH MAGNET. RUN ELECTRICAL WIRING DOWN THROUGH SHELF.**



**5th Step)**

**BE SURE TO CONSTRUCT ALL DISPLAY CASES PRIOR TO APPLYING GRAPHIC QUADS. ONCE ALL DISPLAY CASES ARE ASSEMBLED IN PROPER LOCATION, REFER TO GRAPHIC LAYOUT AND APPLY GRAPHIC QUADS.**



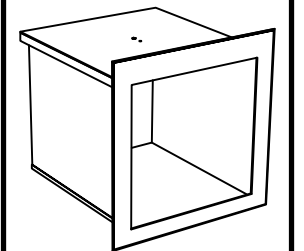
PARTS LIST - PDK1		
QNTY	LABEL	NAME
1	SHELF	LAMINATED SHELF
2	PDK1-SIDE	SIDE PANEL
1	PDK1-BACK	BACK PANEL
1	PDK-1 TOP	TOP PANEL WITH LIGHT



**Expo Displays**

3401 Mary Taylor Road  
Birmingham, Alabama 35235  
(205) 439-8200

Drawn By: JW



**ASSEMBLY INSTRUCTIONS**

PDK1

1-OPEN SIDE PRODUCT DISPLAY CASE

APPENDIX H1

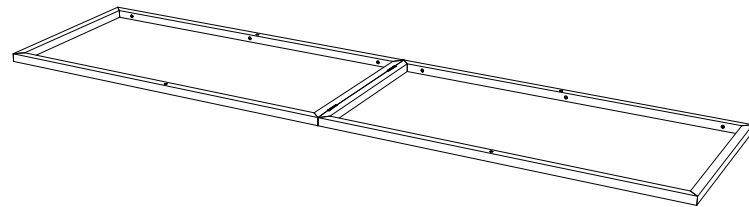
PARTS LIST		
QNTY	LABEL	NAME
1	LVHX	LEFT VERTICAL HINGED MAX
1	RVHX	RIGHT VERTICAL HINGED MAX
2	BH1	BOTTOM HORIZONTAL BAR
2	TH1	TOP HORIZONTAL BAR
2	MH1	MIDDLE HORIZONTAL BAR
1	CVH1	CENTER VERTICAL HINGED BAR
1	CVH2	CENTER VERTICAL HALF
20	GRN	1" GREEN THUMB SCREW
1	MQX-MM1	MAX MEDIA MOUNT

**NOTE:**

REFER TO APPENDIX J FOR BASIC MQX-F24 FRAME ASSEMBLY AND APPENDIX J7 FOR MAX MEDIA MOUNT ASSEMBLY

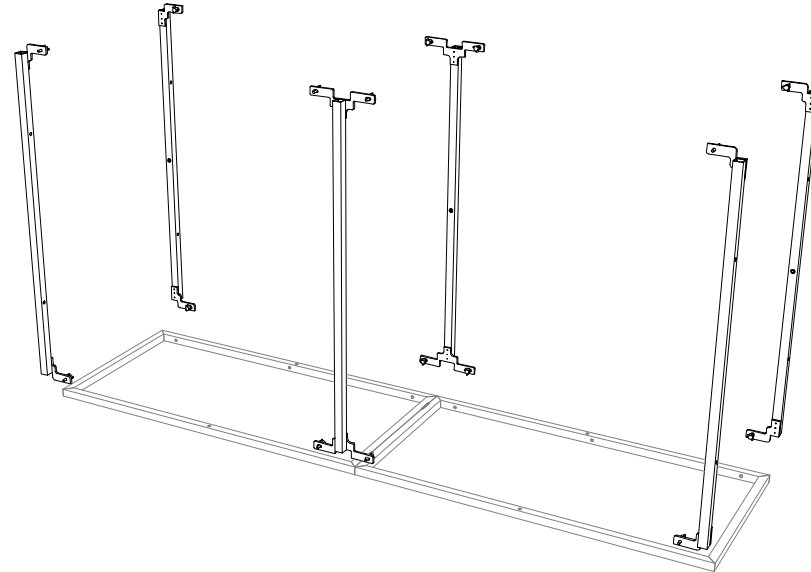
**1st Step)**

START WITH THE LEFT VERTICAL (LVHX) ON THE GROUND



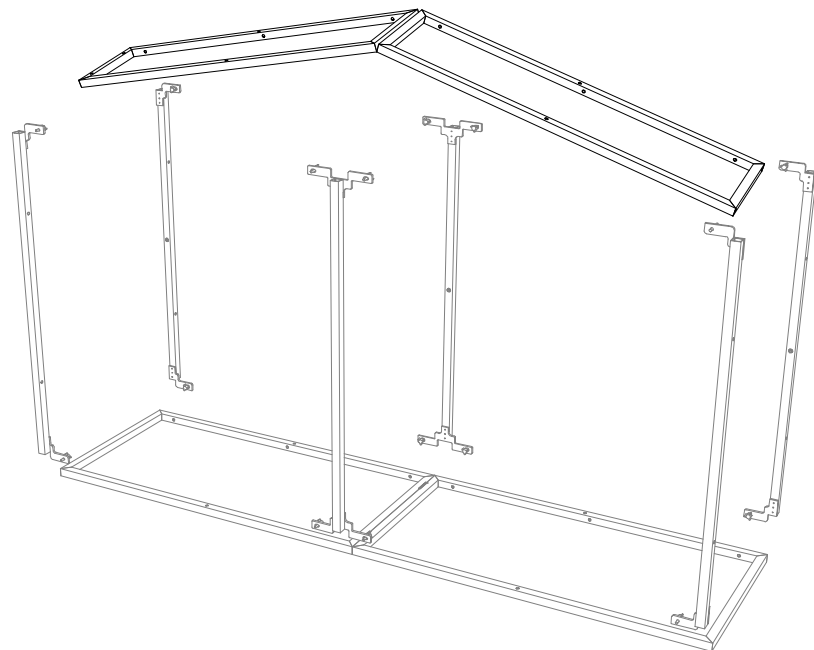
**2nd Step)**

ATTACH THE (2) TOP HORIZONTAL (TH1), THE (2) MIDDLE HORIZONTAL (MH1), AND THE (2) BOTTOM HORIZONTAL (BH1)



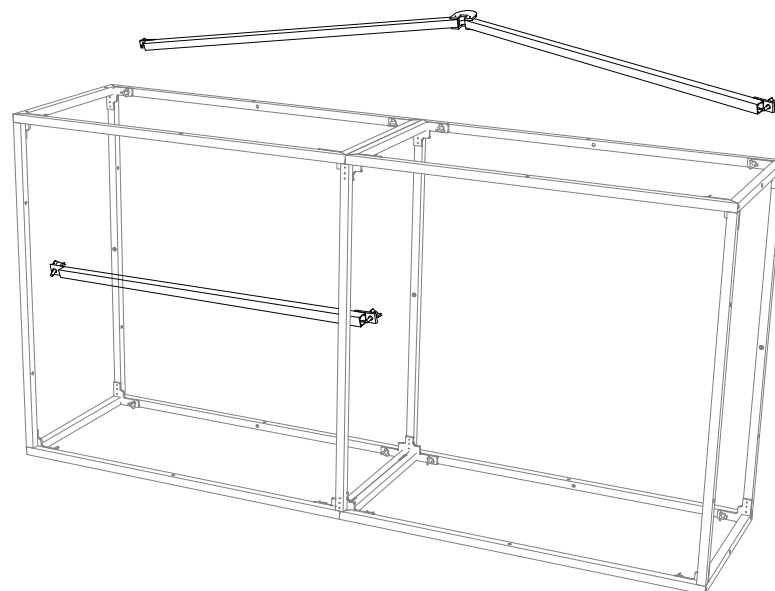
**3rd Step)**

ATTACH THE RIGHT HINGED SIDE (RVH1)



**4th Step)**

ATTACH THE (1) CENTER VERTICAL HINGED (CVH1) TO BACK OF FRAME, AND (1) CENTER VERTICAL (CVH2) TO BOTTOM-FRONT OF FRAME, AND STAND UP-RIGHT



\*MATCH NUMBERS TO CONSTRUCT



Expo Displays

3401 Mary Taylor Road  
Birmingham, Alabama 35235  
(205) 439-8200

Drawn By: JW



ASSEMBLY INSTRUCTIONS

MQX-F24 WITH MAX MEDIA MOUNT

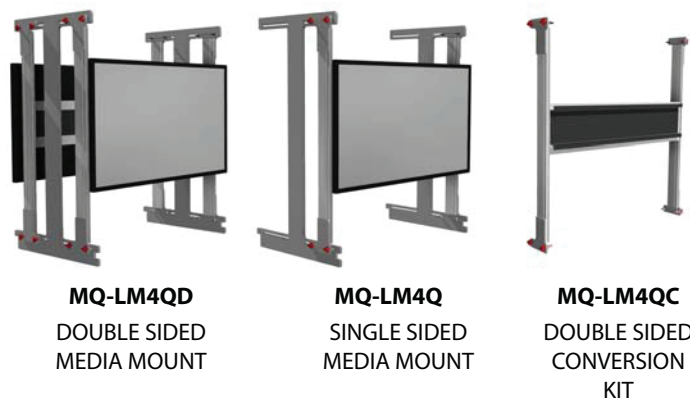
APPENDIX J6

## PARTS LIST:

#	LABEL	NAME
1	MQ-LM4QD	MAX MEDIA MOUNT

### 1st Step)

THIS SET OF ASSEMBLY INSTRUCTIONS FOCUSES ON THE DOUBLE SIDED MOUNT (MQ-LM4QD). THE SAME PROCEDURES APPLY WHEN SETTING UP THE SINGLE SIDED (MQ-LM4Q) AND THE DOUBLE SIDED CONVERSION KIT (MQ-LM4QC)



THESE MOUNTS ARE COMPATIBLE WITH MQX-F24 MULTIQUAD® FRAMES.

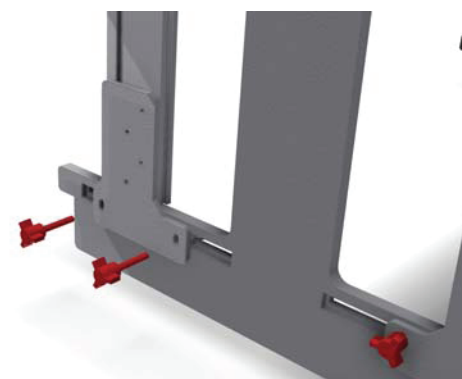


### 2nd Step)

AN M10 HEX KEY WILL BE INCLUDED WITH THE MOUNT THAT WILL BE USED TO FASTEN THE EXTRUSIONS TOGETHER.

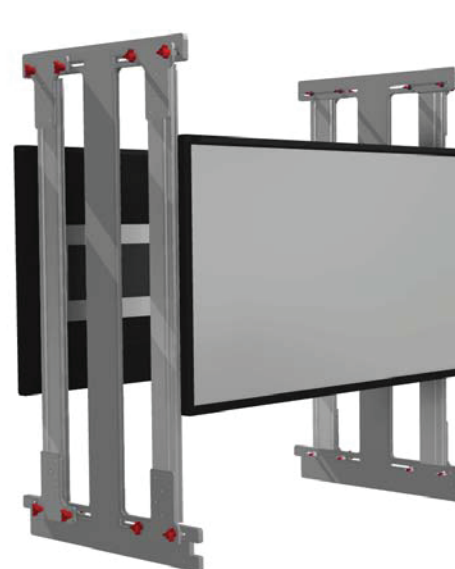


USE THE M10 HEX KEY TO TIGHTEN THE LOCKS THAT ATTACH THE VESA TV MOUNT TO THE ARMS.



ATTACH THE ASSEMBLED ARMS TO THE "I" SHAPED CENTER VERTICAL SUPPORT USING THE PROVIDED RED THUMBSCREWS AND WING NUTS.

**NOTE:** EXPDISPLAYS® WILL OFTEN ADD ARROWS ON THE EXTRUSIONS TO INDICATE THE IDEAL LOCATION OF THE MONITORS. SIMPLY CONNECT THE ARROWS.



### 5th Step)

GENTLY TILT THE UNIT'S FRONT ONTO THE FRONT OF THE FRAME. THE MOUNT IS NOW SECURE INSIDE THE FRAME.



**EXPO MultiQuad**  
An ExpoDisplays Product

### 4th Step)

LINE THE MONITOR'S CENTER WITHIN THE CENTER OF THE FRAME. THEN GENTLY HOOK THE UNIT'S BACK ONTO THE FRAME



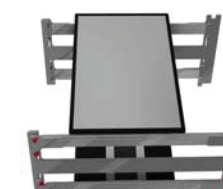
THE "I" SHAPED CENTER HOOKS ONTO THE BACK OF THE MQXF24 FRAME.



**Expo EXPO Displays**  
A Division of Diamond Displays International

3401 Mary Taylor Road  
Birmingham, Alabama 35235  
(205) 439-8200

Drawn By: NRIMSAND



Sheet Title

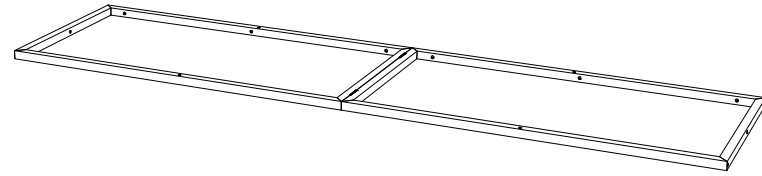
**ASSEMBLY  
INSTRUCTIONS  
MAX MEDIA MOUNT**

APPENDIX J7

ONCE SECURE THE MEDIA MOUNT IS READY TO HOLD YOUR 42" LCD OR PLASMA DISPLAY.

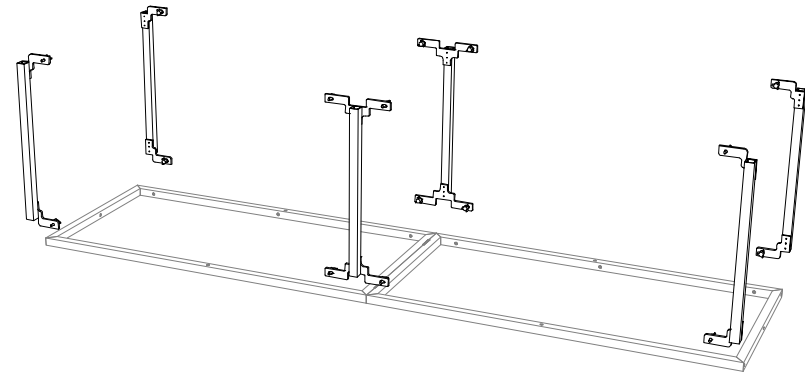
1st Step

START WITH THE LEFT VERTICAL HINGED (LVHX) ON THE GROUND



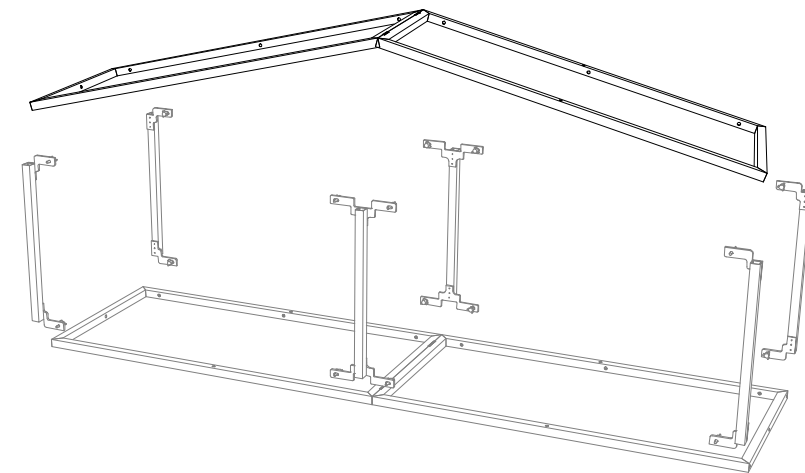
2nd Step

ATTACH THE (2) TOP HORIZONTAL (TH2), THE (2) MIDDLE HORIZONTAL (MH2), AND THE (2) BOTTOM HORIZONTAL (BH2)



3rd Step

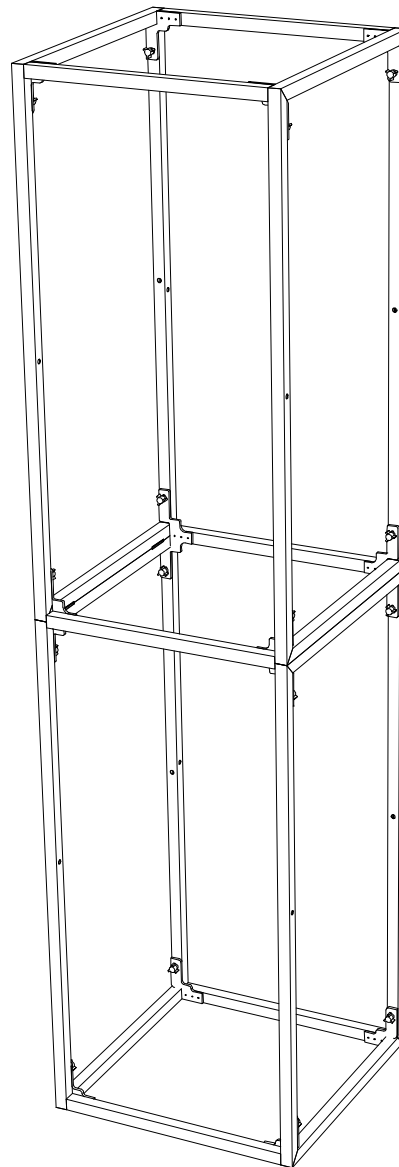
ATTACH THE RIGHT HINGED SIDE (RVHX)



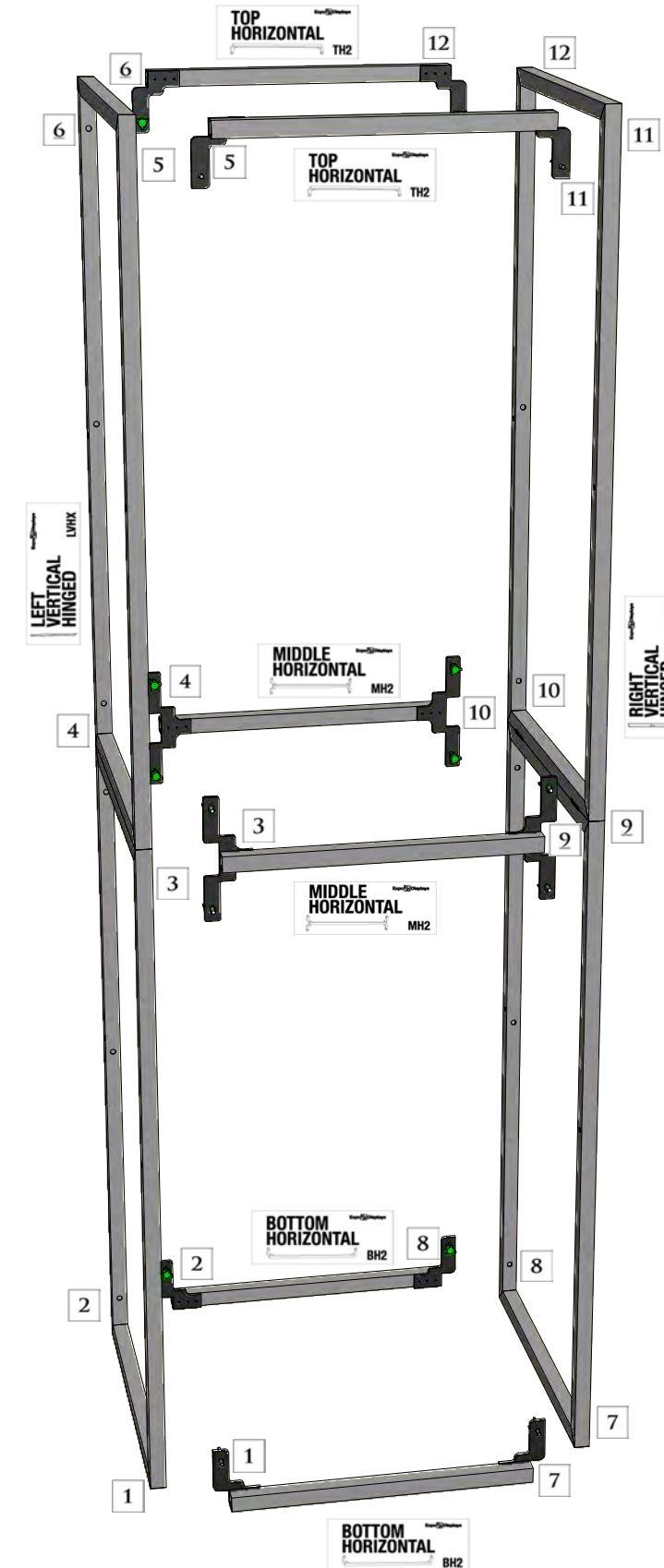
PARTS LIST		
QNTY	LABEL	NAME
1	LVHX	LEFT VERTICAL HINGED
1	RVHX	RIGHT VERTICAL HINGED
2	BH2	BOTTOM HORIZONTAL
2	MH2	MIDDLE HORIZONTAL
2	TH2	TOP HORIZONTAL
1	GRN	1" GREEN THUMB SCREW
4	RED	2" RED THUMB SCREW

4th Step

STAND UP-RIGHT



MATCH NUMBERS TO CONSTRUCT



Expo Displays

3401 Mary Taylor Road  
Birmingham, Alabama 35235  
(205) 439-8200

Drawn By: AKHIII

THIS PART USED TO MAKE  
**MOX-F14**  
1x4 MAX FRAME

ASSEMBLY INSTRUCTIONS

1x4 MAX FRAME  
MOX-F14

APPENDIX N