

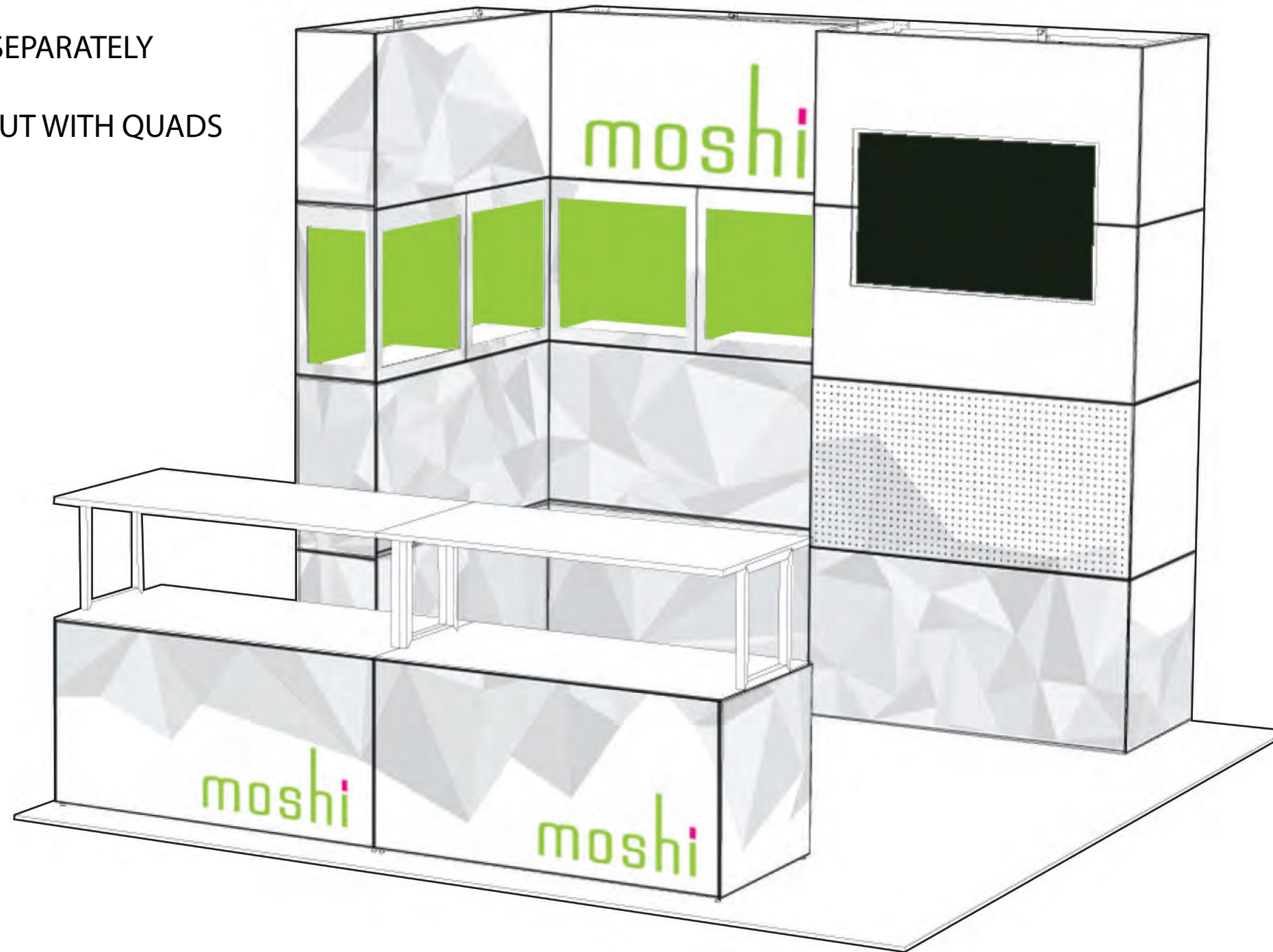
WHEN ASSEMBLING **EX PO MultiQuad**[®]

REMEMBER YOUR **ABC**'s...

ASSEMBLE EACH COMPONENT SEPARATELY

BUILD THE DESIRED LAYOUT

COVER YOUR MULTIQUAD LAYOUT WITH QUADS



EX PO MultiQuad[®]
An **ExpoDisplays** Product

MOSHI
10'x10' Custom MultiQuad



Expo EX PO Displays[®]
A Division of Diamond Displays International

3401 Mary Taylor Road
Birmingham, Alabama 35235
(205) 439-8200

Job #: 61909

Date: 5.8.14

Drawn By: JW

Project Title

MOSHI

Sheet Title

**ASSEMBLY
INSTRUCTIONS
COVER SHEET**



MOSHI

**ASSEMBLY INSTRUCTIONS
ELECTRICAL PLAN**

BOOTH # _____

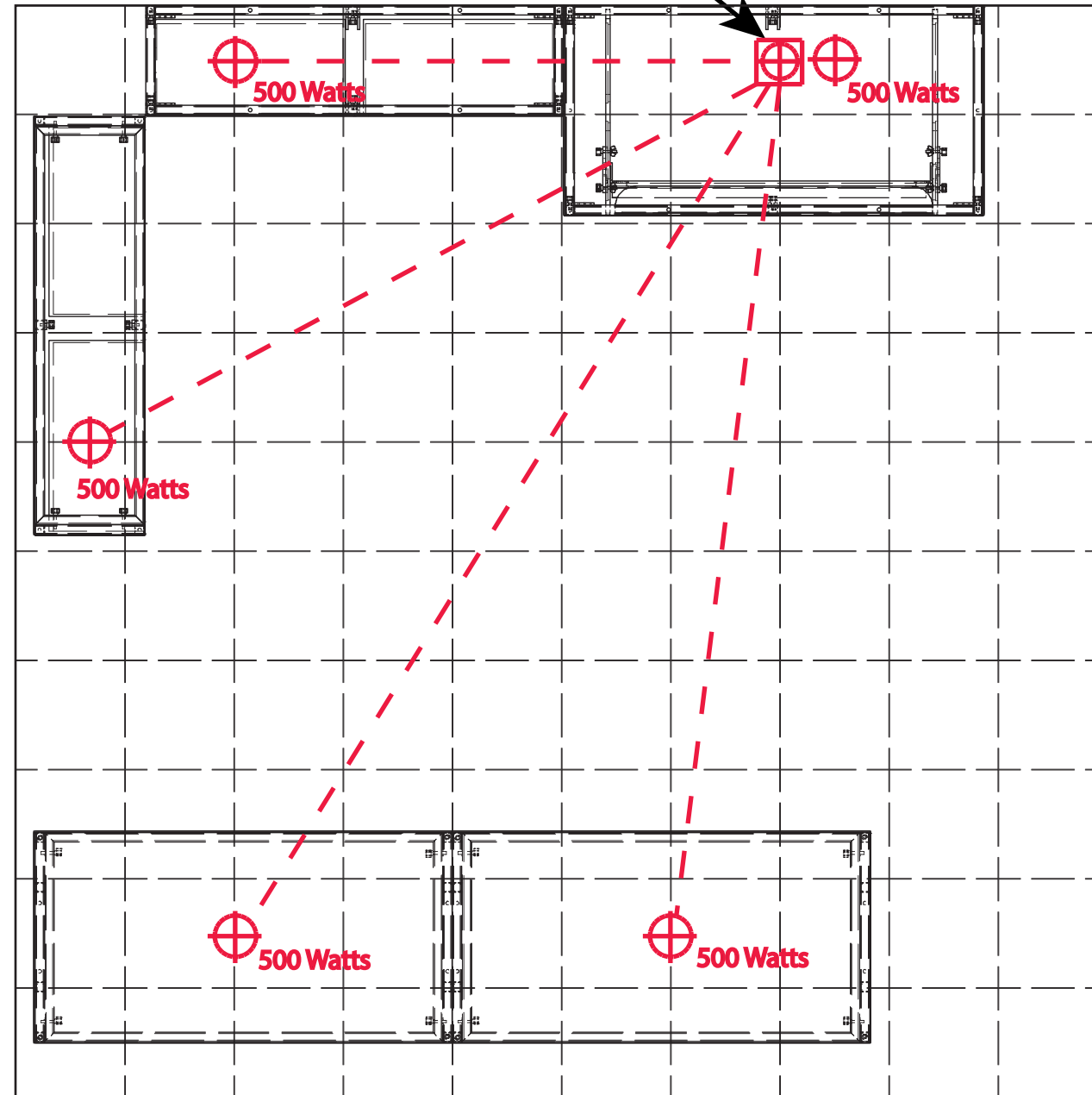
ELECTRICAL DROP
20 amps

BOOTH # _____

BOOTH # _____

BOOTH # _____

FRONT OF DISPLAY



| | |
|--|------------------------------|
| | MAIN ELECTRICAL DROP |
| | ELECTRICAL OUTLET |
| | POWER CORDS RUN UNDER CARPET |

1 Square = 1'-0"

1. PLACE THE FAR RIGHT TOWER INTO THE DESIRED LOCATION USING PAGE 2
2. SLIDE ADJACENT TOWER INTO PLACE AND ATTACH USING THE PROVIDED CONNECTORS (SEE APPENDIX A)
3. REPEAT STEP 2 UNTIL ALL THE FRAMES ARE JOINED TOGETHER
4. INSTALL ALL REMAINING ACCESSORIES

RED THUMB SCREW FRAMES TOGETHER. SCREW FROM LEFT TO RIGHT. →

CORNER CONNECTIONS USE MAGNETIC CORNER CONNECTOR. INSTALL CONNECTOR TO JOIN TWO FRAME CORNERS TOGETHER.

INDICATES AREA WHERE TWO FRAMES ARE ATTACHED VIA MQ-CLAMP. REFER TO APPENDIX A FOR CONNECTION INSTRUCTIONS.



THIS PART USED TO MAKE
MQ-F22
2x2 STANDARD FRAME

THIS PART USED TO MAKE
MQ-F22
2x2 STANDARD FRAME

THIS PART USED TO MAKE
MQ-F22
2x2 STANDARD FRAME

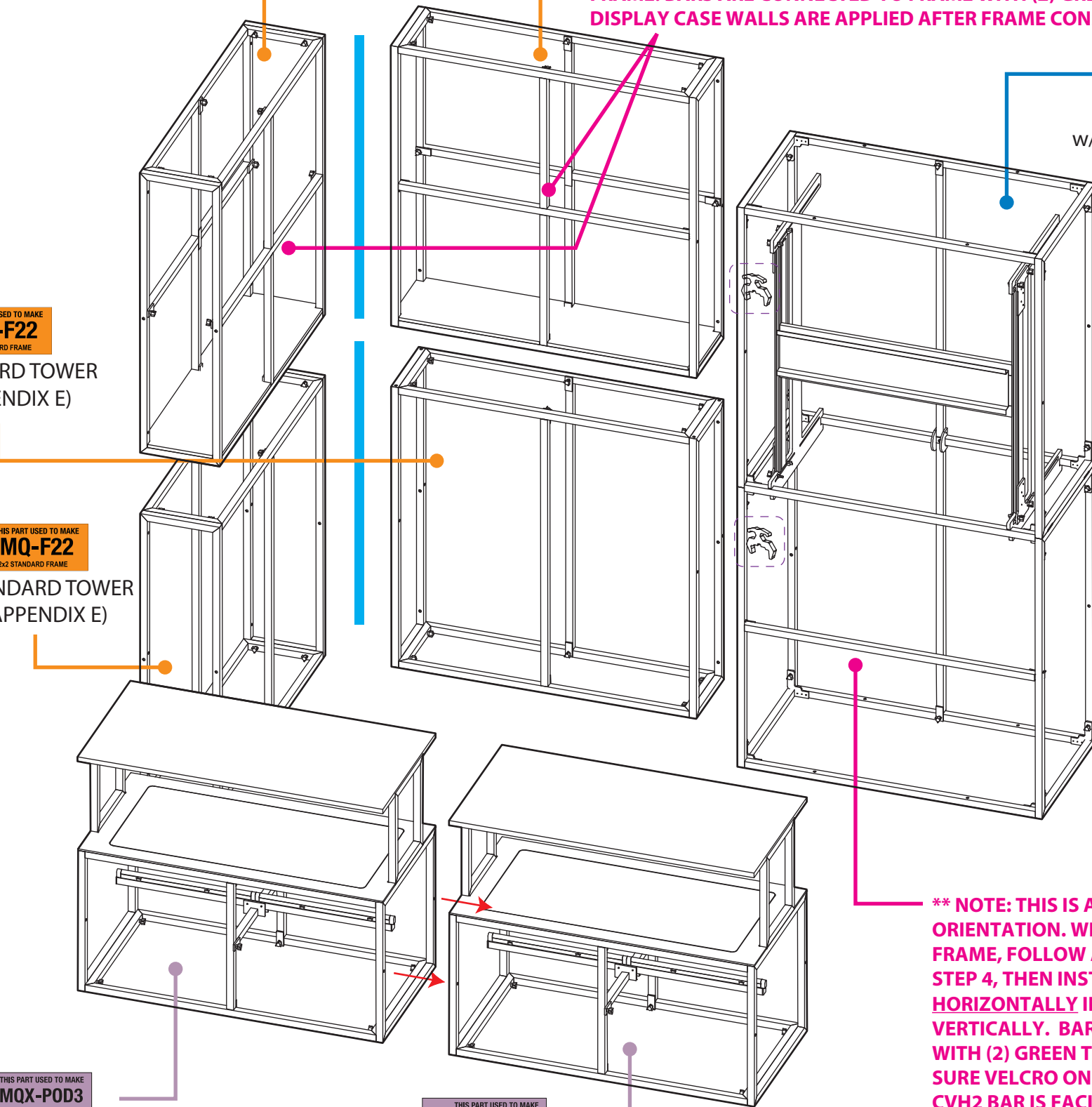
THIS PART USED TO MAKE
MQ-F22
2x2 STANDARD FRAME

THIS PART USED TO MAKE
MQX-POD3
2x1 MAX PODIUM3

THIS PART USED TO MAKE
MQX-POD3
2x1 MAX PODIUM3

THIS PART USED TO MAKE
MQX-F24
2x4 MAX FRAME

**** NOTE: THIS IS A CUSTOM FRAME ORIENTATION. WHEN CONSTRUCTING FRAME, FOLLOW APPENDIX E UP TO STEP 3, THEN INSTALL (2) CVH2 BARS WITH VELCRO HORIZONTALLY IN MIDDLE OF FRAME. BE SURE VELCRO ON BARS ARE FACING DOWN. INSTALL (2) CUSTOM CVH2 BARS WITH MAGNET VERTICALLY IN MIDDLE OF MQ-F22 FRAME. BARS ARE CONNECTED TO FRAME WITH (2) GREEN THUMB SCREWS. DISPLAY CASE WALLS ARE APPLIED AFTER FRAME CONSTRUCTION ****



**** NOTE: THIS IS A CUSTOM FRAME ORIENTATION. WHEN CONSTRUCTING FRAME, FOLLOW APPENDIX J6 UP TO STEP 4, THEN INSTALL CVH2 BAR HORIZONTALLY INSTEAD OF VERTICALLY. BAR IS CONNECTED WITH (2) GREEN THUMB SCREWS. BE SURE VELCRO ON FRAME AND ON CVH2 BAR IS FACING FORWARD. PEGBOARD QUAD IS APPLIED LATER WITH VELCRO ****



Expo EXPO Displays[®]
A Division of Diamond Displays International

3401 Mary Taylor Road
Birmingham, Alabama 35235
(205) 439-8200

Job #: 61909

Date: 5.8.14

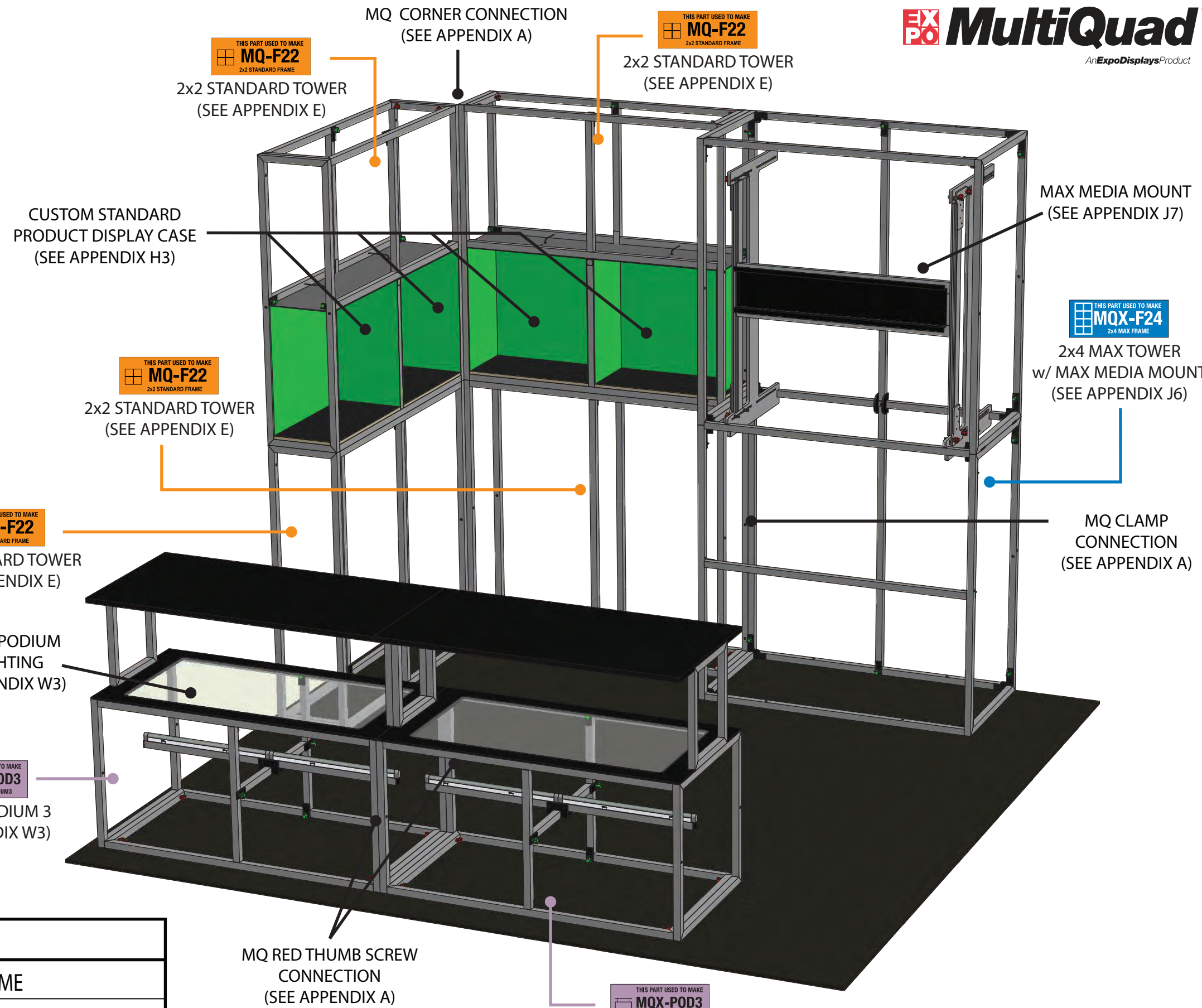
Drawn By: JW

Project Title




MOSHI

Sheet Title

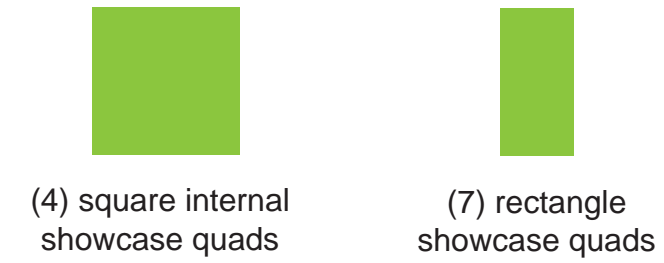
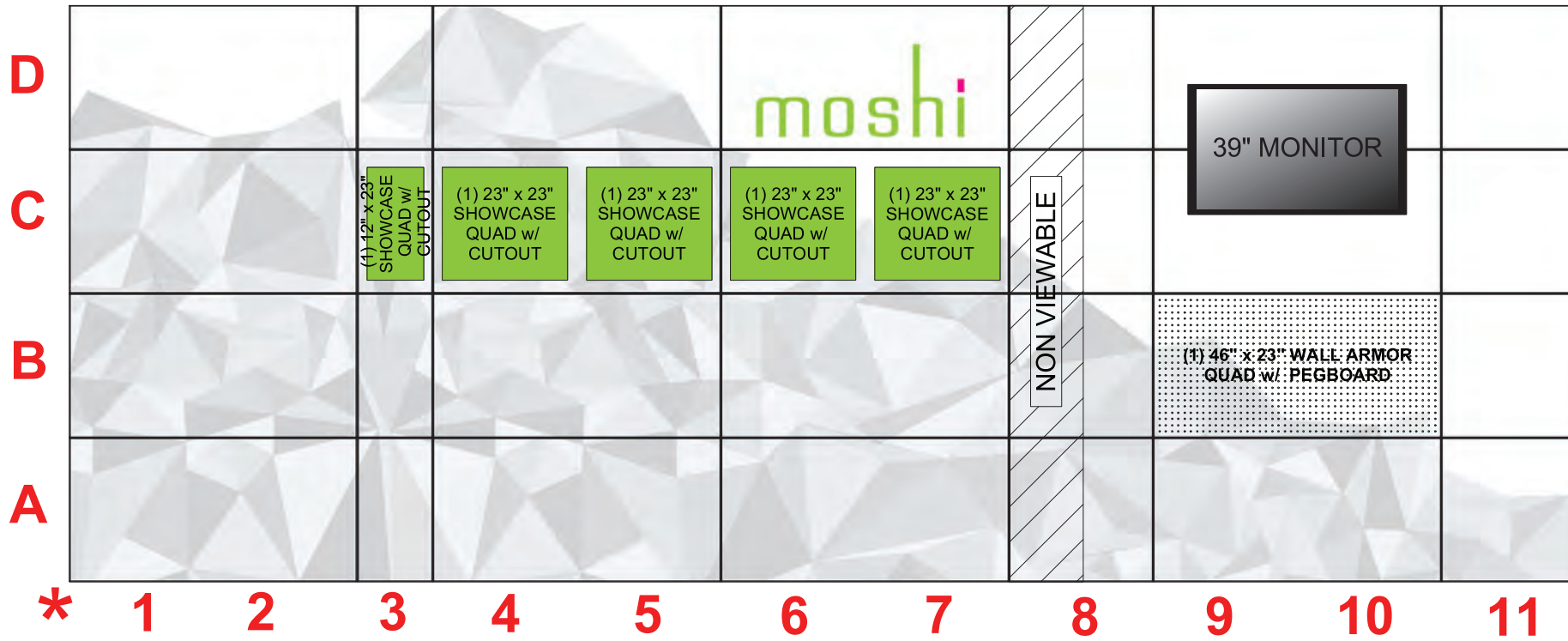
ASSEMBLY INSTRUCTIONS
EXPLODED LAYOUT



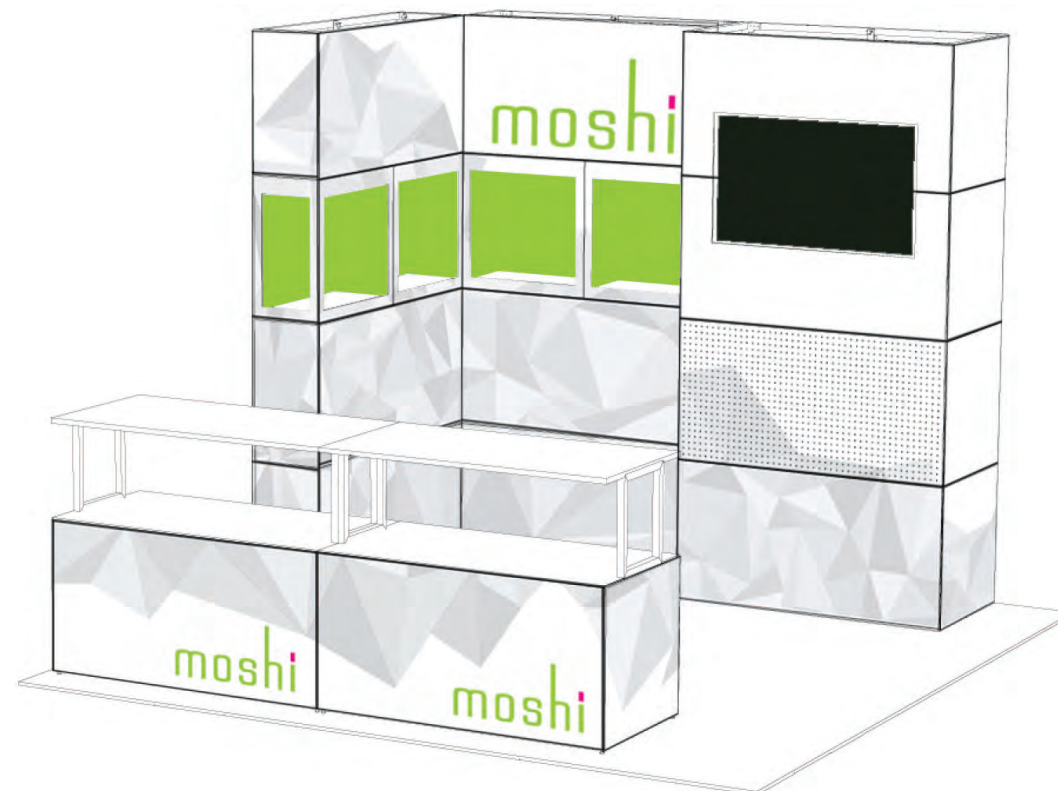
PARTS LIST:

| # | LABEL | NAME |
|---|---|--------------------|
| 4 |  MQ-F22 2x2 STANDARD FRAME | 2x2 STANDARD TOWER |
| 1 |  MQX-F24 2x4 MAX FRAME | 2x4 MAX TOWER |
| 2 |  MQX-POD3 2x1 MAX PODIUM3 | 2x1 MAX PODIUM 3 |

10' MAIN BACKWALL
Flattened elevation

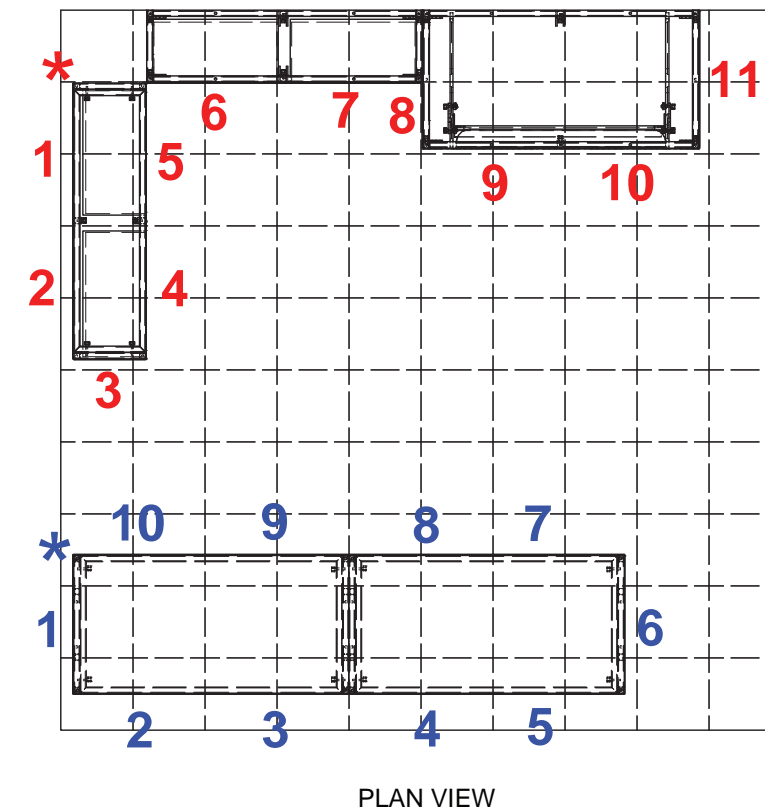


(2) MQX-POD3
Flattened elevation



PARTS LIST:

| # | SIZE | NAME |
|----|-------|--------------------------------------|
| 15 | 46x23 | DOUBLE QUAD |
| 10 | 23x23 | STANDARD QUAD |
| 1 | 46x23 | HINGED DOUBLE QUAD w/ MONITOR CUTOUT |
| 3 | 12x23 | SIDE QUAD |
| 4 | 23x23 | STANDARD QUAD w/ SHOWCASE CUTOUT |
| 1 | 12x23 | SIDE QUAD w/ SHOWCASE CUTOUT |
| 1 | 46x23 | WALL ARMOR QUAD w/ PEGBOARD |



ORIGIN = * *

**FRAME CLAMP INSTRUCTION
MQ-CLMP**

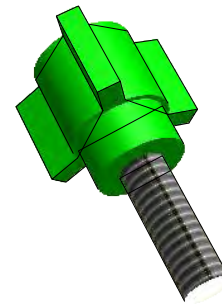
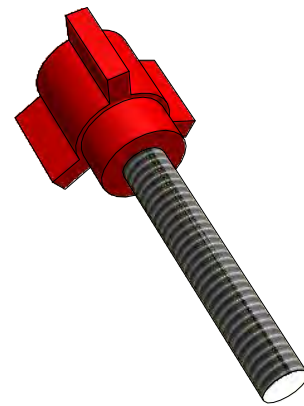
(NOT REQUIRED IN EVERY CONFIGURATION)



THE MQ-CLMP IS A FRICTION-FIT CONNECTOR / ALIGNMENT TOOL THAT DOES NOT REQUIRE TOOLS. THEY ARE TO BE USED IN ABNORMAL MULTIQUAD FRAME CONFIGURATIONS OR AS ADDITIONAL FRAME SECURITY IN SPECIAL SITUATIONS



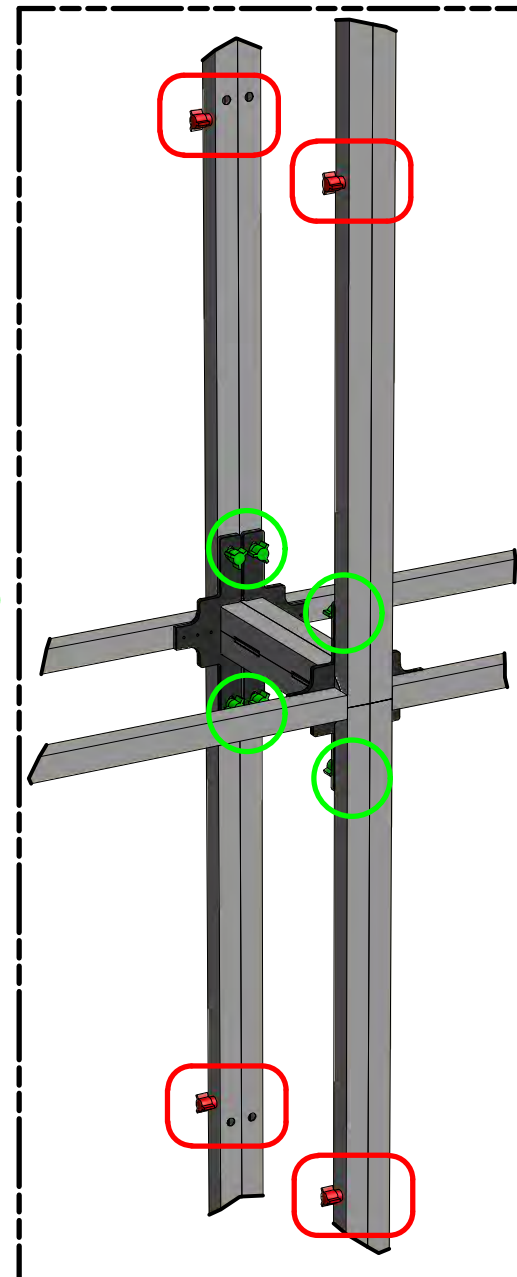
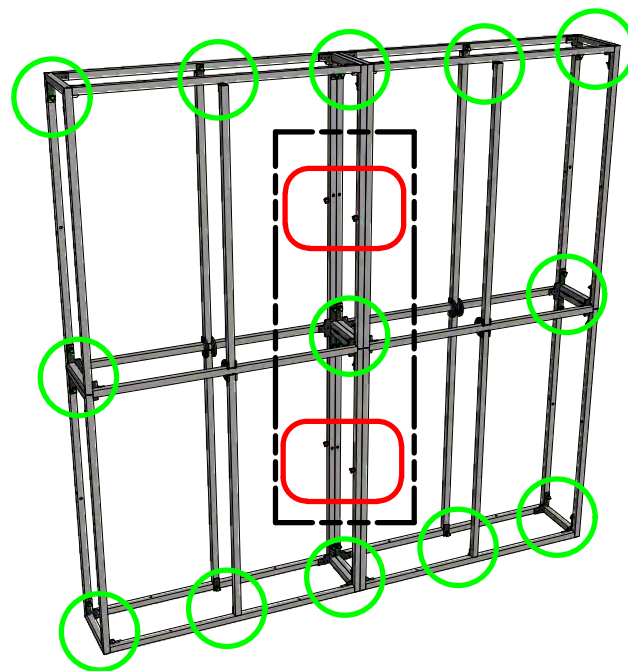
**THUMB SCREW INSTRUCTION
MQ-TSR2 / MQ-TSG1**



THE 2" RED THUMB SCREW IS USED TO CONNECT MULTIQUAD FRAMES TO OTHER MULTIQUAD FRAMES. EACH FRAME HAS RIVET NUT ON ONE SIDE AND A HOLE ON THE OTHER TO ALLOW FRAME TO FRAME CONNECTION

THE 1" GREEN THUMB SCREWS ARE USED WHEN ASSEMBLING 1x4 AND 2x4 FRAMES. SEE APPENDIX PAGES

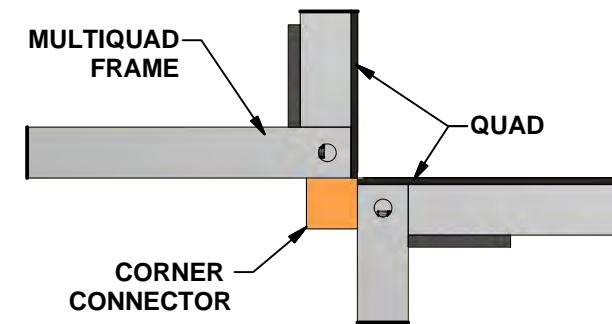
DUE TO THE RIVET NUTS, ALL FRAMES HAVE A LEFT AND RIGHT SIDE. VERIFY FRAME ORIENTATION TO ALLOW FRAME TO FRAME CONNECTION



**CORNER CONNECTOR INSTRUCTION
MQ-BTW**

(NOT REQUIRED IN EVERY CONFIGURATION)

THE MQ-BTW CORNER ALIGNMENT TOOL IS DESIGNED TO AID IN THE ALIGNMENT OF FRAMES AS NEEDED IN SOME MULTIQUAD CONFIGURATIONS.



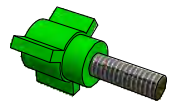
AFTER TWO MULTIQUAD FRAMES ARE SET "CORNER-TO-CORNER" THE MQ-BTW SIMPLY ATTACHES TO THE EXISTING MAGNETS ON THE FRAME



Expo Displays

3401 Mary Taylor Road
Birmingham, Alabama 35235
(205) 439-8200

Drawn By: AKHIII



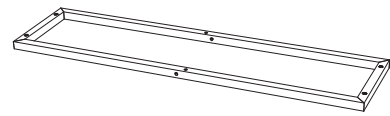
**ASSEMBLY
INSTRUCTIONS**
CONNECTORS & ALIGNMENT TOOLS

APPENDIX A

| PARTS LIST | | |
|------------|--------|--------------------------|
| QNTY | LABEL | NAME |
| 1 | LVR1 | LEFT VERTICAL RECTANGLE |
| 1 | RVR1 | RIGHT VERTICAL RECTANGLE |
| 1 | BHR1 | BOTTOM HORIZONTAL RECT. |
| 1 | THR1 | TOP HORIZONTAL RECT. |
| 2 | CVH2 | CENTER VERTICAL HALF |
| 20 | GRN | 1" GREEN THUMB SCREW |
| 4 | RED | 2" RED THUMB SCREW |
| 1 | CT1246 | MQ-F22C COUNTERTOP |

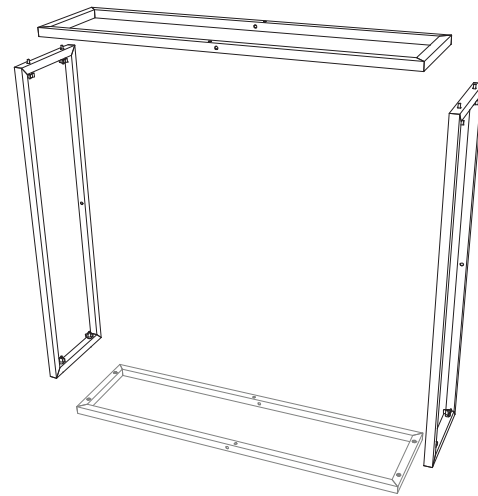
1st Step)

START WITH THE LEFT VERTICAL (LVR1) ON THE GROUND



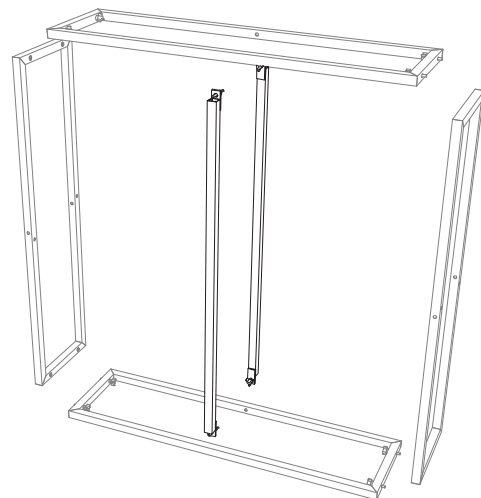
2nd Step)

ATTACH THE TOP HORIZONTAL (THR1), THE BOTTOM HORIZONTAL (BHR1), AND THE RIGHT VERTICAL (RVR1)



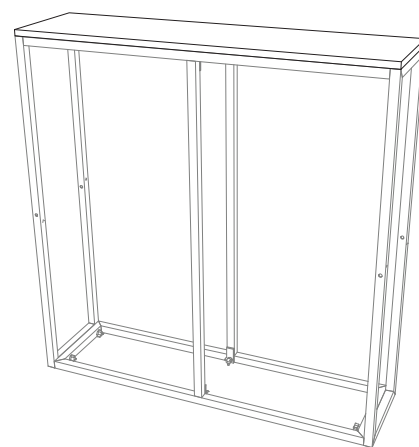
3rd Step)

ATTACH THE (2) CENTER VERTICAL (CVH2)

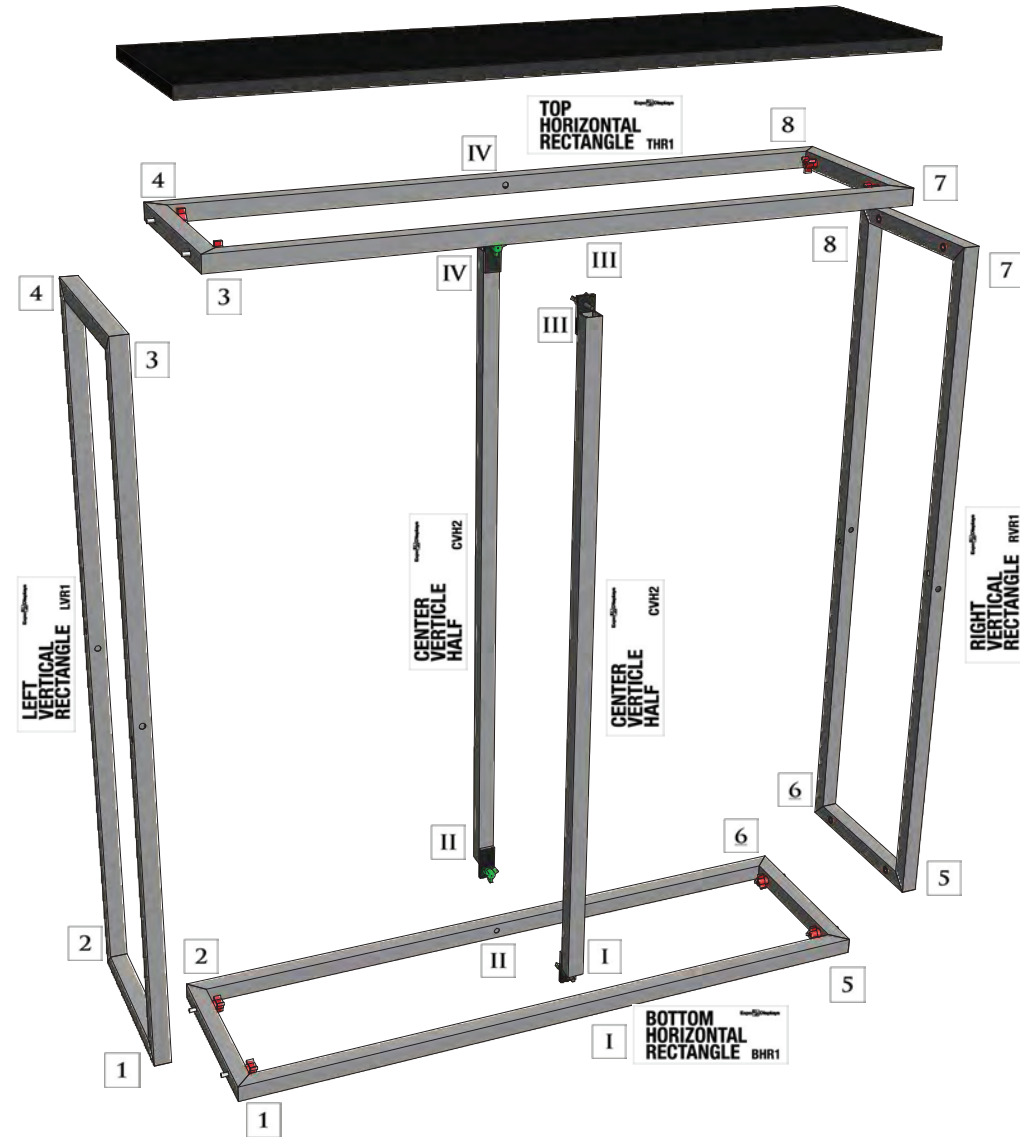


4th Step)

ATTACH THE COUNTERTOP



*MATCH NUMBERS TO CONSTRUCT



THIS PART USED TO MAKE
MQ-F22C
2x2 STANDARD COUNTER



ASSEMBLY INSTRUCTIONS
2x2 STANDARD COUNTER
MQ-F22C

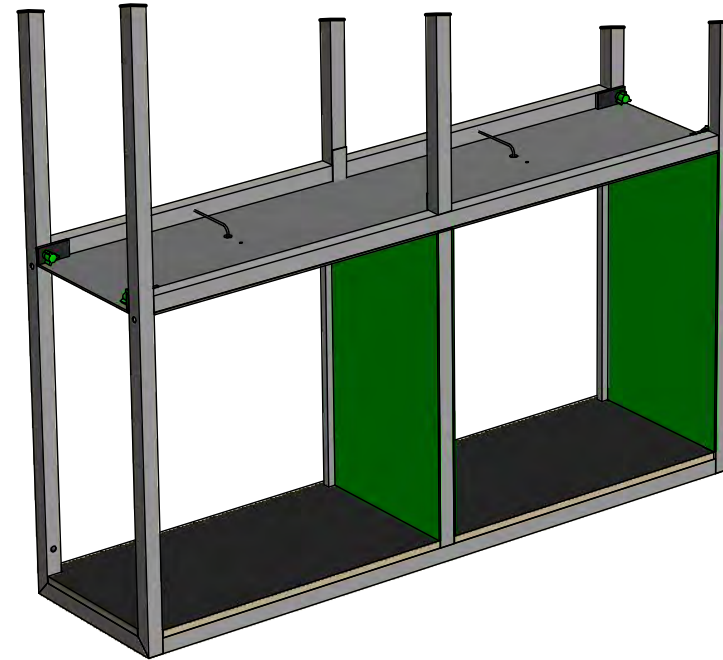
1st Step)

ASSEMBLE CUSTOM MQ-F22 FRAME. INSTALL (2) CVH2 BARS WITH VELCRO HORIZONTALLY IN THE MIDDLE OF FRAME, WITH VELCRO ON BARS FACING DOWN. INSTALL (2) CUSTOM CVH2 BARS WITH MAGNET IN MIDDLE OF FRAME. USE GREEN THUMB SCREWS TO ATTACH BARS. PLACE BLACK LAMINATED SHELF INTO FRAME.



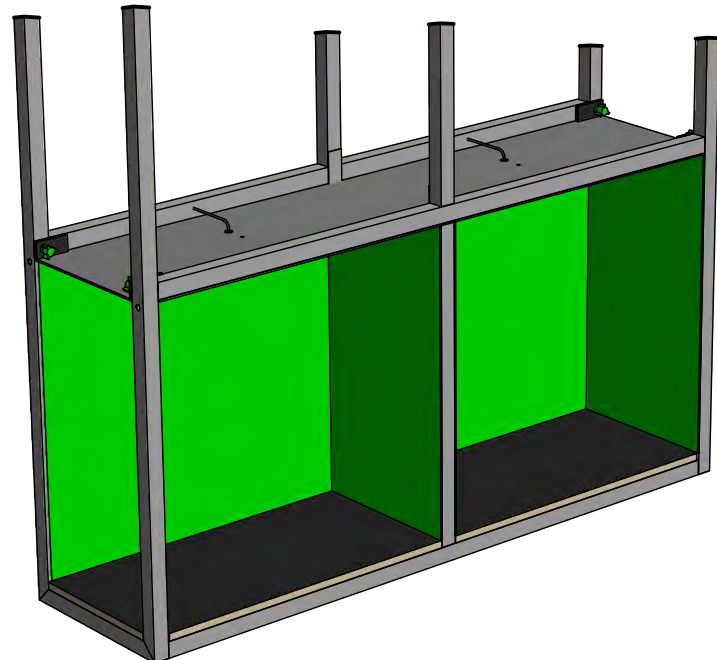
2nd Step)

PLACE CUSTOM PRINTED SIDE WALLS ON INSIDE OF DISPLAY CASE. SIDE PANELS ATTACH VIA MAGNET STRIPS THAT ARE APPLIED TO CUSTOM CVH2 BARS APPLIED IN STEP 1. SIDE PANELS CONTAIN ALUMINUM BAR WITH MAGNET STRIP. BE SURE MAGNET STRIP ON BAR IS FACING FORWARD.



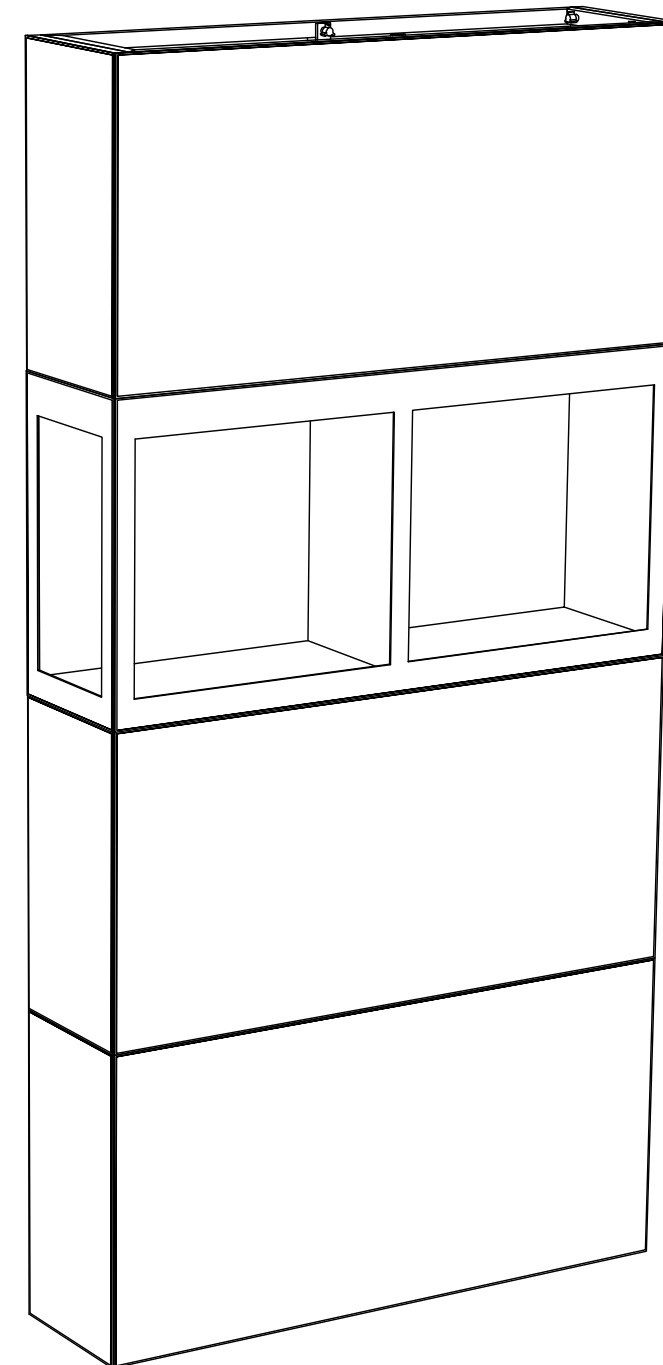
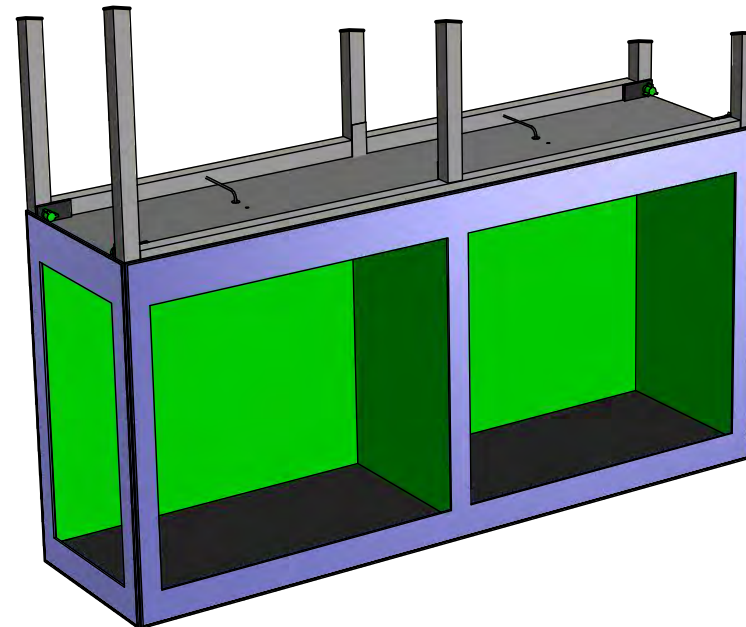
3rd Step)

INSTALL CUSTOM PRINTED BACK WALL PANELS TO PREVIOUSLY APPLIED SIDE WALL PANELS. PANELS CONNECT TOGETHER USING MAGNET. THE FAR LEFT BACK PANEL (DISPLAY CASE WITH OPEN SIDE) IS A COUPLE INCHES WIDER THAN OTHER PBACK PANEL.



4th Step)

REFER TO GRAPHICS LAYOUT IN ASSEMBLY INSTRUCTIONS, AND APPLY GRAPHIC QUADS WITH CUTOUTS IN PROPER LOCATIONS. MAKE SURE ELECTRICAL WIRING FOR DISPLAY CASE LIGHTING IS RUNNING THRU FRAME TOWARDS BOTTOM. PLUG INTO POWER SOURCE BEFORE APPLYING ALL GRAPHIC QUADS.



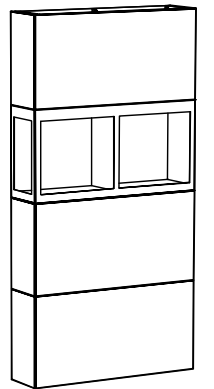
| PARTS LIST | | |
|------------|-------------|--------------------------------|
| QNTY | LABEL | NAME |
| 1 | LAM PLYWOOD | LAMINATED PLYWOOD SHELF |
| 3-4 | SINTRA | SIDE WALL PANELS |
| 1 | SINTRA | TOP PANEL WITH LED PUCK LIGHTS |
| 2 | SINTRA | BACK WALL PANEL |



Expo Displays

3401 Mary Taylor Road
Birmingham, Alabama 35235
(205) 439-8200

Drawn By: JW



ASSEMBLY INSTRUCTIONS

CUSTOM PRODUCT DISPLAY CASE

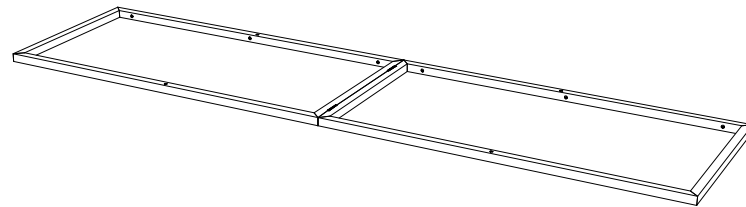
| PARTS LIST | | |
|------------|---------|----------------------------|
| QNTY | LABEL | NAME |
| 1 | LVHX | LEFT VERTICAL HINGED MAX |
| 1 | RVHX | RIGHT VERTICAL HINGED MAX |
| 2 | BH1 | BOTTOM HORIZONTAL BAR |
| 2 | TH1 | TOP HORIZONTAL BAR |
| 2 | MH1 | MIDDLE HORIZONTAL BAR |
| 1 | CVH1 | CENTER VERTICAL HINGED BAR |
| 1 | CVH2 | CENTER VERTICAL HALF |
| 20 | GRN | 1" GREEN THUMB SCREW |
| 1 | MQX-MM1 | MAX MEDIA MOUNT |

NOTE:

REFER TO APPENDIX J FOR BASIC MQX-F24 FRAME ASSEMBLY AND APPENDIX J7 FOR MAX MEDIA MOUNT ASSEMBLY

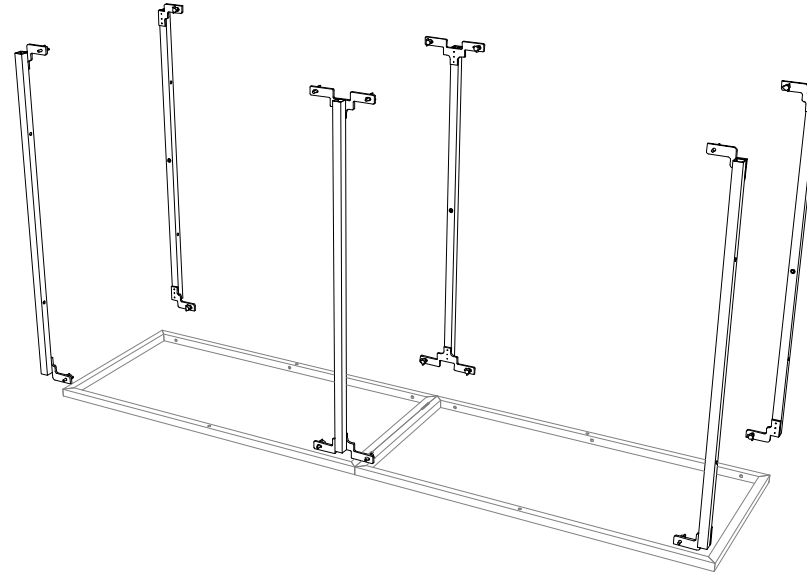
1st Step)

START WITH THE LEFT VERTICAL (LVHX) ON THE GROUND



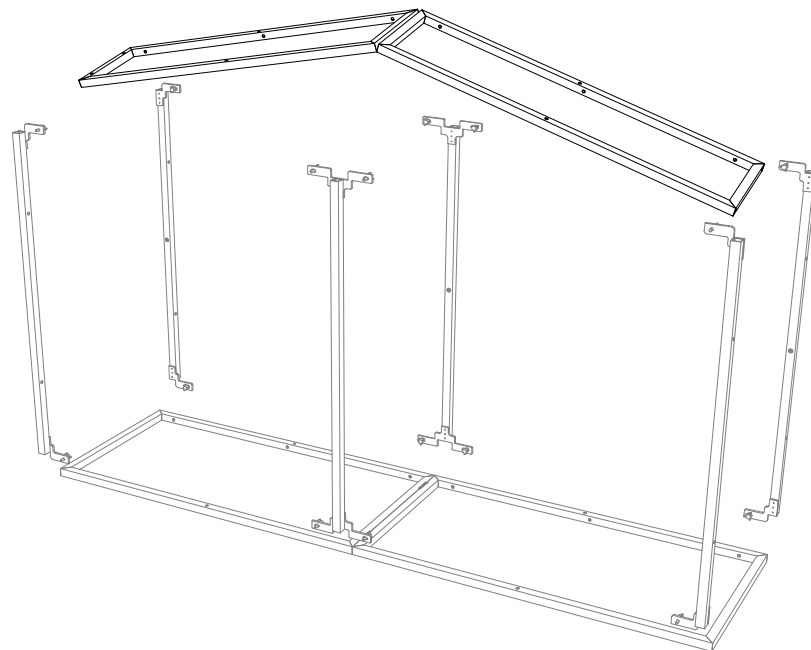
2nd Step)

ATTACH THE (2) TOP HORIZONTAL (TH1), THE (2) MIDDLE HORIZONTAL (MH1), AND THE (2) BOTTOM HORIZONTAL (BH1)



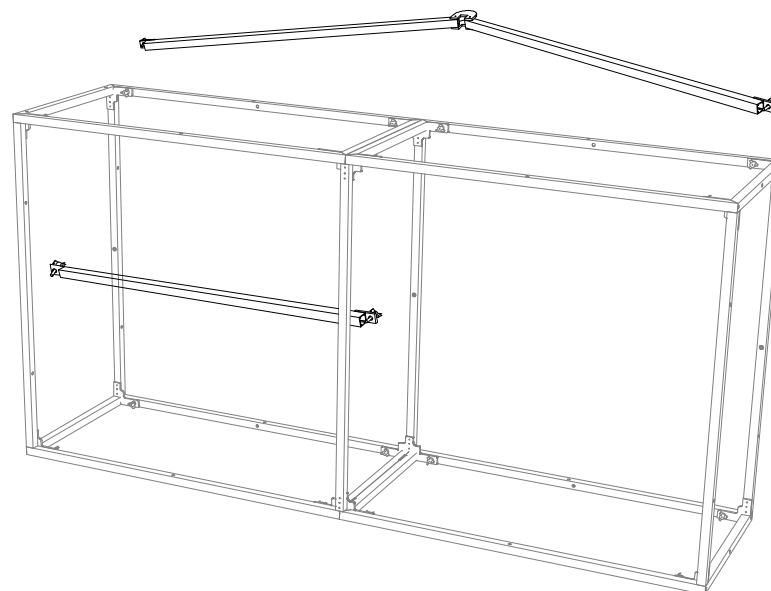
3rd Step)

ATTACH THE RIGHT HINGED SIDE (RVH1)



4th Step)

ATTACH THE (1) CENTER VERTICAL HINGED (CVH1) TO BACK OF FRAME, AND (1) CENTER VERTICAL (CVH2) TO BOTTOM-FRONT OF FRAME, AND STAND UP-RIGHT



*MATCH NUMBERS TO CONSTRUCT



Expo Displays

3401 Mary Taylor Road
Birmingham, Alabama 35235
(205) 439-8200

Drawn By: JW



ASSEMBLY INSTRUCTIONS

MQX-F24 WITH MAX MEDIA MOUNT

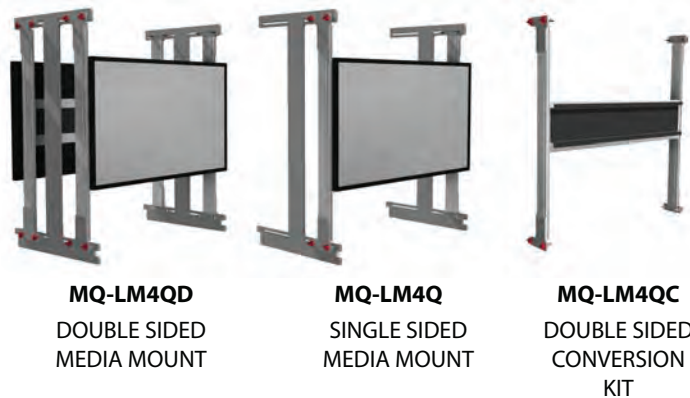
APPENDIX J6

PARTS LIST:

| # | LABEL | NAME |
|---|----------|-----------------|
| 1 | MQ-LM4QD | MAX MEDIA MOUNT |

1st Step)

THIS SET OF ASSEMBLY INSTRUCTIONS FOCUSES ON THE DOUBLE SIDED MOUNT (MQ-LM4QD). THE SAME PROCEDURES APPLY WHEN SETTING UP THE SINGLE SIDED (MQ-LM4Q) AND THE DOUBLE SIDED CONVERSION KIT (MQ-LM4QC)



THESE MOUNTS ARE COMPATIBLE WITH MQX-F24 MULTIQUAD® FRAMES.

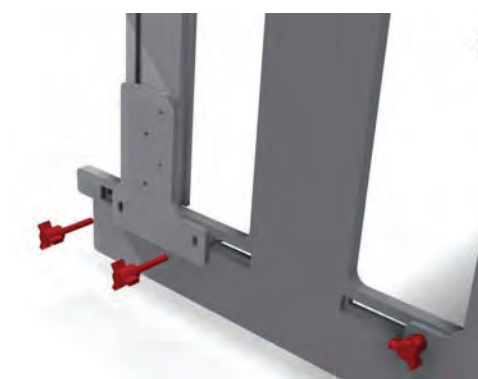


2nd Step)

AN M10 HEX KEY WILL BE INCLUDED WITH THE MOUNT THAT WILL BE USED TO FASTEN THE EXTRUSIONS TOGETHER.



USE THE M10 HEX KEY TO TIGHTEN THE LOCKS THAT ATTACH THE VESA TV MOUNT TO THE ARMS.



ATTACH THE ASSEMBLED ARMS TO THE "I" SHAPED CENTER VERTICAL SUPPORT USING THE PROVIDED RED THUMBSCREWS AND WING NUTS.

NOTE: EXPDISPLAYS® WILL OFTEN ADD ARROWS ON THE EXTRUSIONS TO INDICATE THE IDEAL LOCATION OF THE MONITORS. SIMPLY CONNECT THE ARROWS.



5th Step)

GENTLY TILT THE UNIT'S FRONT ONTO THE FRONT OF THE FRAME. THE MOUNT IS NOW SECURE INSIDE THE FRAME.



EX PO MultiQuad
An ExpoDisplays Product

4th Step)

LINE THE MONITOR'S CENTER WITHIN THE CENTER OF THE FRAME. THEN GENTLY HOOK THE UNIT'S BACK ONTO THE FRAME



THE "I" SHAPED CENTER HOOKS ONTO THE BACK OF THE MQXF24 FRAME.



ONCE SECURE THE MEDIA MOUNT IS READY TO HOLD YOUR 42" LCD OR PLASMA DISPLAY.

EX PO

Expo EX PO Displays
A Division of Diamond Displays International

3401 Mary Taylor Road
Birmingham, Alabama 35235
(205) 439-8200

Drawn By: NRIMSAND



Sheet Title

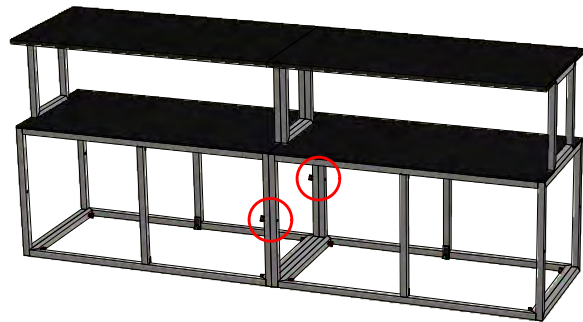
**ASSEMBLY
INSTRUCTIONS
MAX MEDIA MOUNT**

APPENDIX J7

| PARTS LIST | | |
|------------|---------|--------------------------|
| QNTY | LABEL | NAME |
| 1 | LVPX1 | LEFT VERTICAL RECTANGLE |
| 1 | RVPX1 | RIGHT VERTICAL RECTANGLE |
| 1 | BHRX1 | BOTTOM HORIZONTAL RECT. |
| 1 | THR1 | TOP HORIZONTAL RECT. |
| 2 | CVH3 | CENTER VERTICAL BAR |
| 1 | SSPODX3 | SHELF |
| 1 | CTPODX2 | PODIUM COUNTER TOP |
| 8 | RED | 2" RED THUMB SCREW |
| 4 | GREEN | 1" GREEN THUMB SCREW |

Joining Multiple Podiums)

ATTACH MULTIPLE PODIUMS BY RUNNING THE 2" RED THUMBSCREWS THROUGH THE OPEN HOLES OF ONE PODIUM INTO THE THREADED INSERTS OF ANOTHER



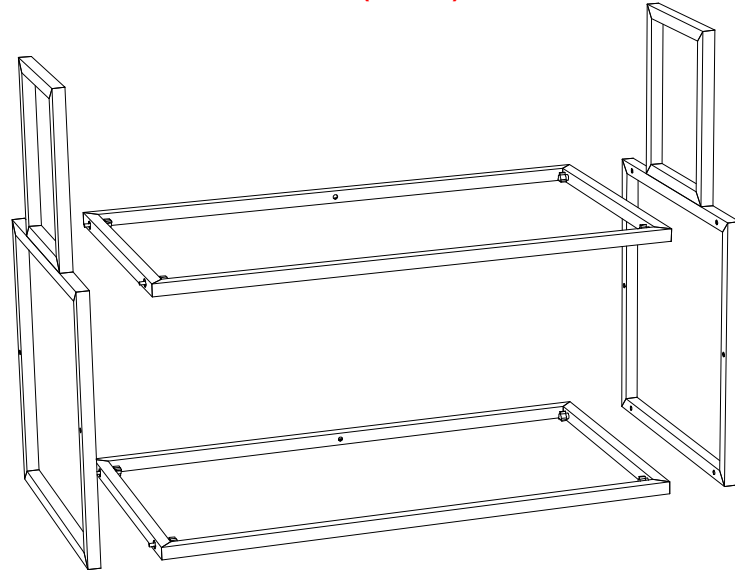
Uplight Shelf

USE UPLIGHT SHELF AND PLEXI FOR THIS APPLICATION. INSTALL (1) CVH3 BAR IN BETWEEN CENTER CVH3 BARS. CONNECT FLOURESCENT LIGHT FIXTURE WITH CLIP ON TOP OF BAR, FACING UPWARDS. PLUG INTO POWER SOURCE



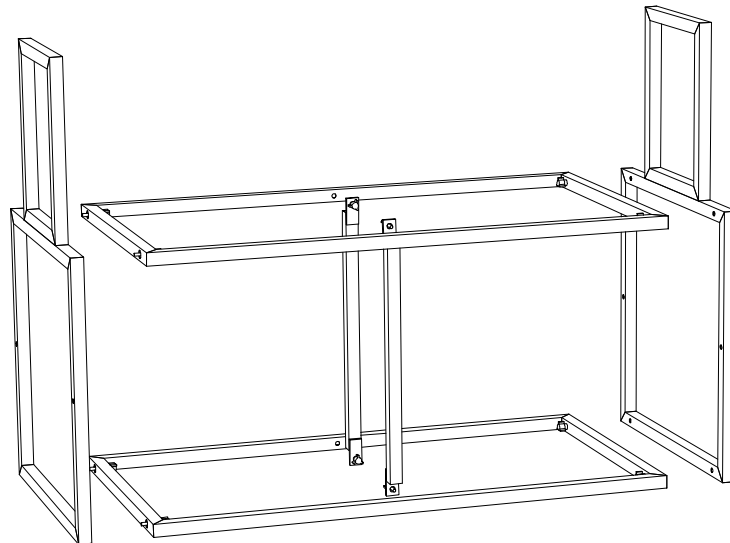
1st Step)

START WITH THE BOTTOM HORIZONTAL (BHRX1) ON THE GROUND. ATTACH THE LEFT VERTICAL (LVPX1), AND THE RIGHT VERTICAL (RVPX1). THEN ATTACH THE TOP HORIZONTAL (THR1)



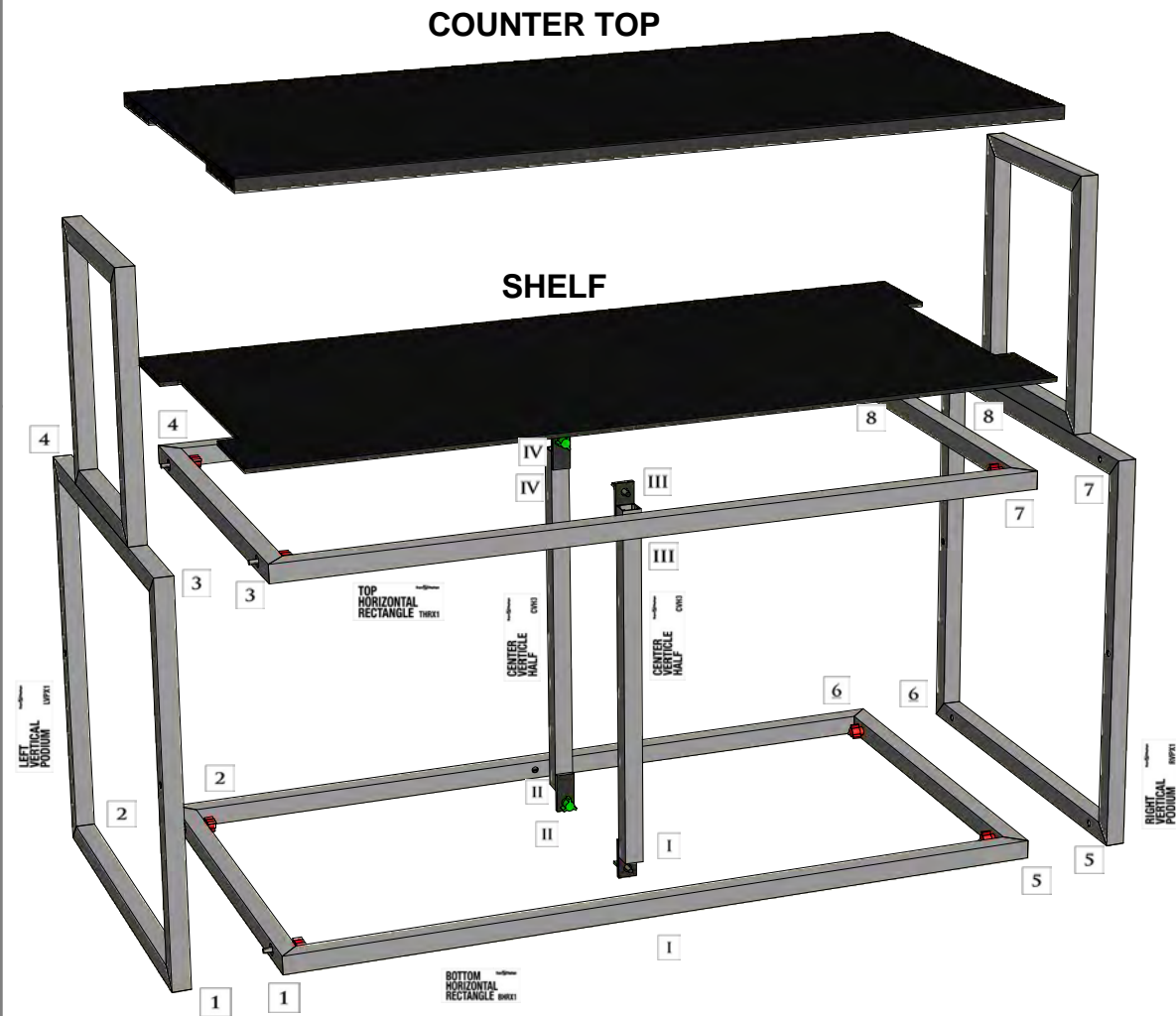
2nd Step)

CONNECT (2) CENTER VERTICAL BARS (CVH3) TO CENTERS OF THR1 AND BHRX1 FRAMES. ATTACH THE PODIUM COUNTERTOP AND THE PODIUM SHELF



EXPO MultiQuad
An ExpoDisplays Product

*MATCH NUMBERS TO CONSTRUCT



EXPO

Expo **EXPO** Displays

3401 Mary Taylor Road
Birmingham, Alabama 35235
(205) 439-8200

Drawn By: JW

THIS PART USED TO MAKE
MQX-POD3
2x1 MAX PODIUM3

ASSEMBLY INSTRUCTIONS
2x1 MAX PODIUM 3
MQX-POD3

APPENDIX W3