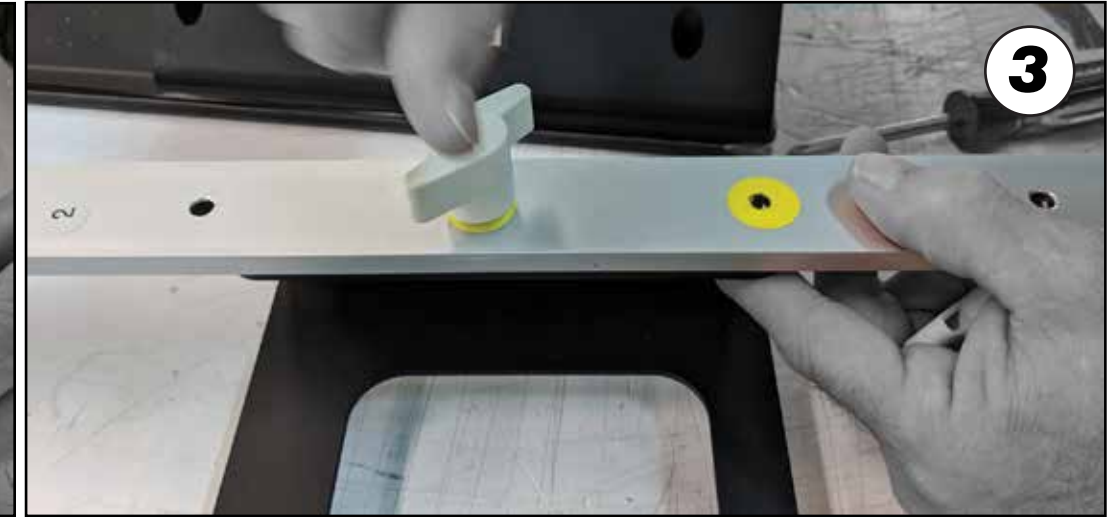
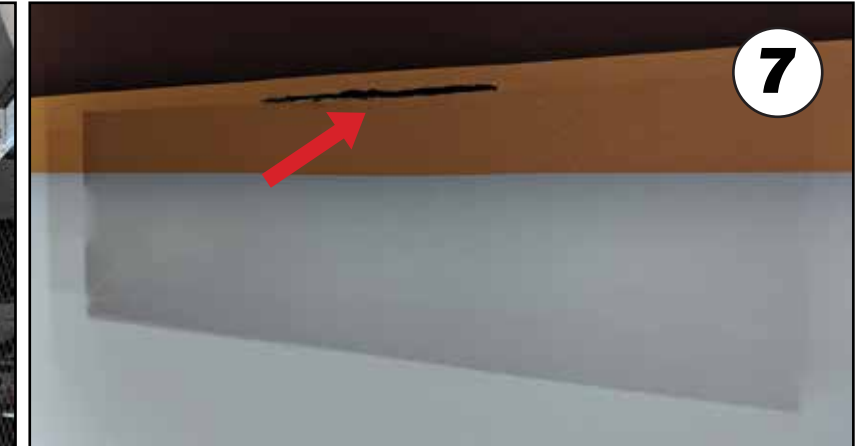
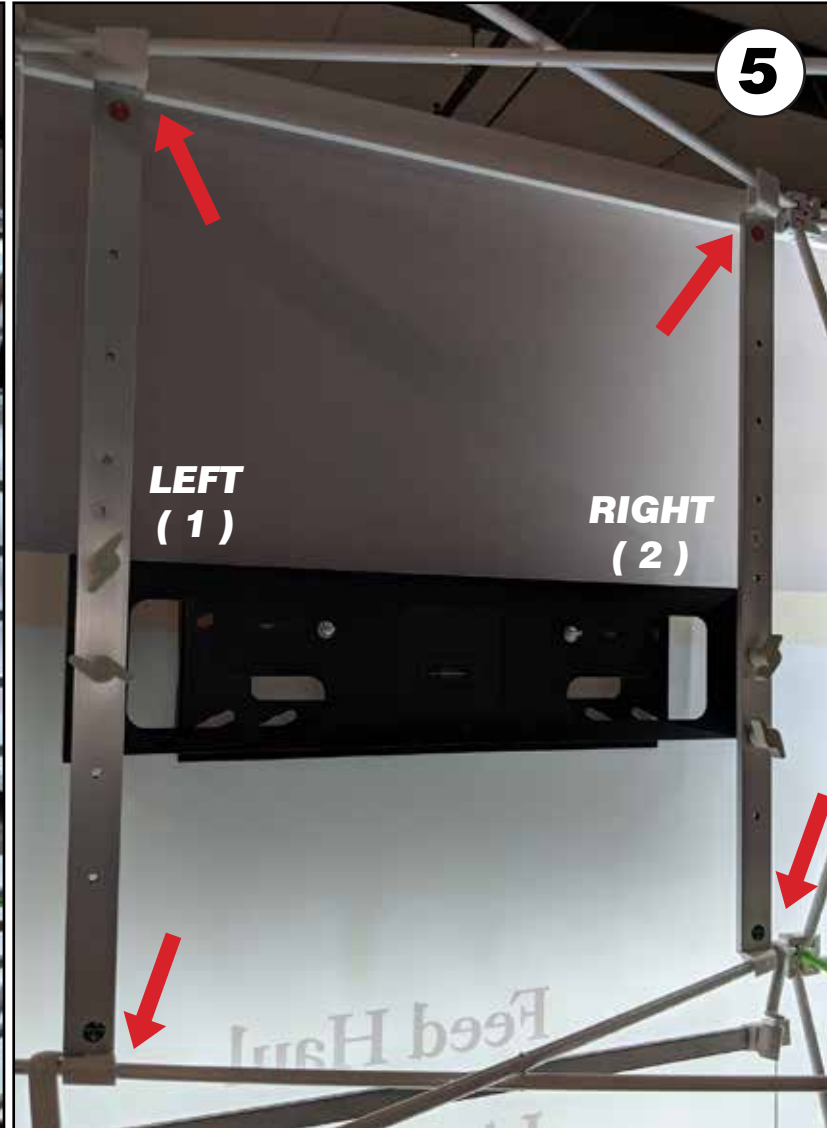
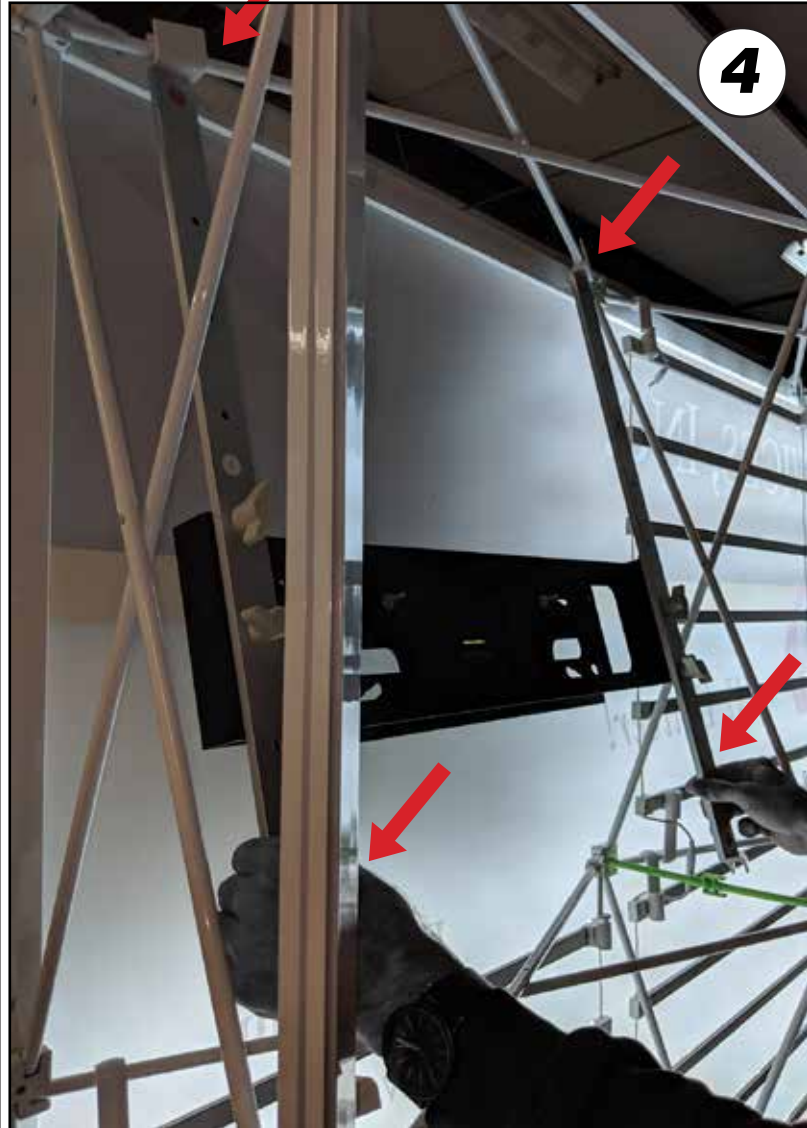


MEDIA MOUNT ASSEMBLY



STEP 1 - ATTACH BOTH MOUNT HOOKS USING (4) PROVIDED SCREWS WITH ALAN WRENCH

STEPS 2 THRU 3 - ATTACH NUMBERED (1) LEFT & NUMBERED (2) RIGHT SIDE MOUNTS WITH PROVIDED THUMBSCREWS IN COLORED AREAS AS SHOWN



STEPS 4 THRU 5 - INSERT ASSEMBLED MOUNT ON BARS BEHIND FABRIC WITH UP & DOWN ARROWS IN DIRECTION AS SHOWN (THUMBSCREWS STAGGERED)

STEPS 6 THRU 8 - HANG TV ON MOUNT THROUGH OPEN AREA IN FABRICS SHOWN